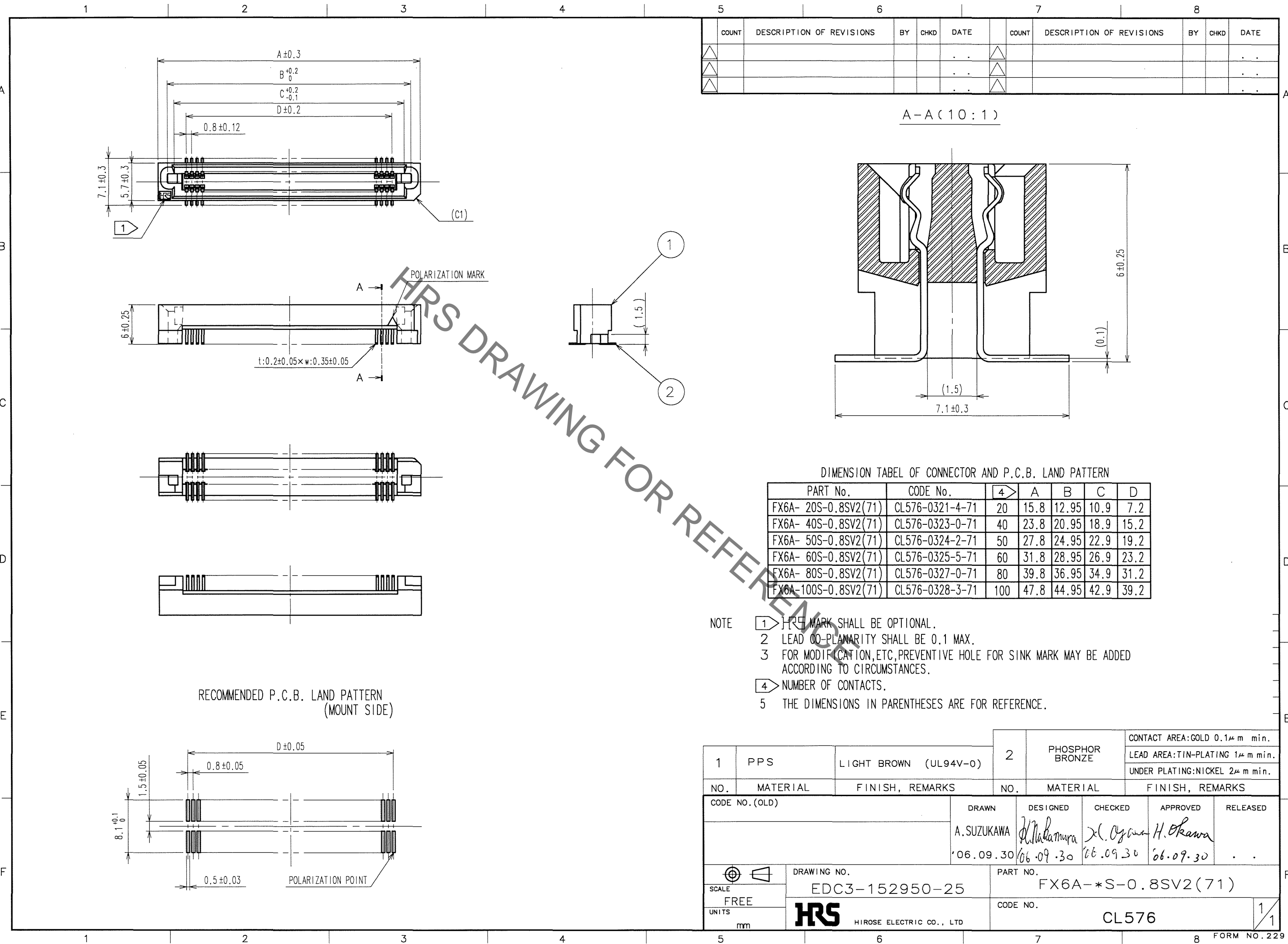


Sep.1.2021 Copyright 2021 HIROSE ELECTRIC CO., LTD. All Rights Reserved.
In case of consideration for using Automotive equipment / device which demand high reliability, kindly contact our sales window correspondents.



COUNT	DESCRIPTION OF REVISIONS	BY	CHKD	DATE	COUNT	DESCRIPTION OF REVISIONS	BY	CHKD	DATE
△					△				
△					△				
△					△				

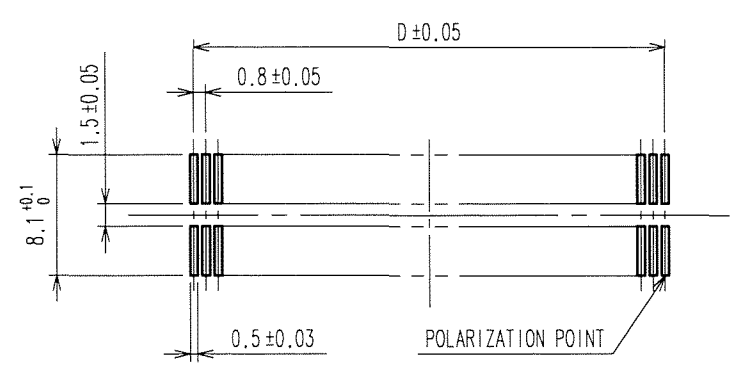
A-A (10:1)

DIMENSION TABLE OF CONNECTOR AND P.C.B. LAND PATTERN

PART No.	CODE No.	4	A	B	C	D
FX6A- 20S-0.8SV2(71)	CL576-0321-4-71	20	15.8	12.95	10.9	7.2
FX6A- 40S-0.8SV2(71)	CL576-0323-0-71	40	23.8	20.95	18.9	15.2
FX6A- 50S-0.8SV2(71)	CL576-0324-2-71	50	27.8	24.95	22.9	19.2
FX6A- 60S-0.8SV2(71)	CL576-0325-5-71	60	31.8	28.95	26.9	23.2
FX6A- 80S-0.8SV2(71)	CL576-0327-0-71	80	39.8	36.95	34.9	31.2
FX6A-100S-0.8SV2(71)	CL576-0328-3-71	100	47.8	44.95	42.9	39.2

- NOTE
- 1) MARK SHALL BE OPTIONAL.
 - 2) LEAD CO-PLANARITY SHALL BE 0.1 MAX.
 - 3) FOR MODIFICATION, ETC, PREVENTIVE HOLE FOR SINK MARK MAY BE ADDED ACCORDING TO CIRCUMSTANCES.
 - 4) NUMBER OF CONTACTS.
 - 5) THE DIMENSIONS IN PARENTHESES ARE FOR REFERENCE.

RECOMMENDED P.C.B. LAND PATTERN (MOUNT SIDE)



1	PPS	LIGHT BROWN (UL94V-0)	2	PHOSPHOR BRONZE	CONTACT AREA:GOLD 0.1μm min. LEAD AREA:TIN-PLATING 1μm min. UNDER PLATING:NICKEL 2μm min.
NO.	MATERIAL	FINISH, REMARKS	NO.	MATERIAL	FINISH, REMARKS
CODE NO. (OLD)		DRAWN	DESIGNED	CHECKED	APPROVED
		A.SUZUKAWA	<i>H. Nakamura</i>	<i>J. Ogawa</i>	<i>H. Okawa</i>
		'06.09.30	'06.09.30	'06.09.30	'06.09.30
DRAWING NO.		PART NO.			
EDC3-152950-25		FX6A-*S-0.8SV2(71)			
SCALE		CODE NO.			
FREE		CL576			
UNITS					
mm					

TO PCK

X-ON Electronics

Largest Supplier of Electrical and Electronic Components

Click to view similar products for [Board to Board & Mezzanine Connectors](#) category:

Click to view products by [Hirose](#) manufacturer:

Other Similar products are found below :

[589158040000018](#) [MDF7C-18P-2.54DSA\(55\)](#) [FCN-230C068-11](#) [FCN-268F012-G/BD](#) [FCN-268F036-G/BD](#) [FCN-268M012-G/0D](#) [FCN-268M024-G/1D](#) [FCN-723J004/1](#) [MIS-048-01-F-D-DP-K](#) [832-10-034-10-001000](#) [FX4C-80S-1.27DSA](#) [FCN-214Q030-G/0](#) [FCN-234P048-G/0](#) [FCN-235D050-G/C](#) [210-93-314-41-105000](#) [2-22603-0](#) [MDF7-40DP-2.54DSA\(55\)](#) [AXG720047](#) [MIT-114-03-F-D-K](#) [55323-1519](#) [DF33-2P-3.3DSA\(24\)](#) [YFT-20-05-H-03-SB-K](#) [503308-3040](#) [026-6203-PDB](#) [027-6203-PDB](#) [069159702701000](#) [10123981-102LF](#) [101A10019X](#) [55650-0588-C](#) [68682-310LF](#) [68684-306](#) [75140-7012](#) [87471-650](#) [YTW-30-07-H-Q-410-140](#) [FCN-268F024-G0D](#) [10124054-515LF](#) [68685-603](#) [8-1616154-3](#) [MIS-019-01-F-D](#) [FCN-268M024-G/3D](#) [FCN-268M036-G/BD](#) [20021832-06016C1LF](#) [KX15-20KLDL-E1000E](#) [AXE810124](#) [FCN-214J100-G/0](#) [FCN-230C068-E/S](#) [AXE812124](#) [AXE816124](#) [AXE720127](#) [354184](#)