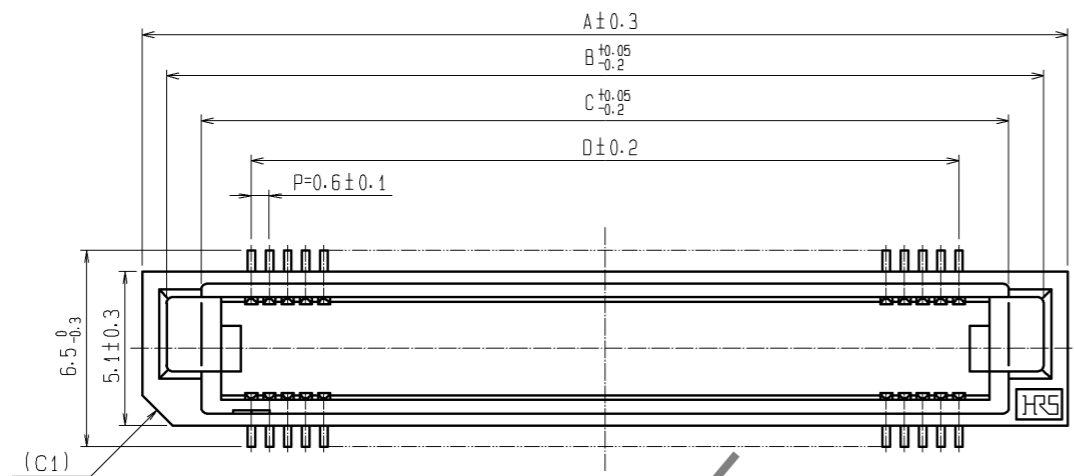
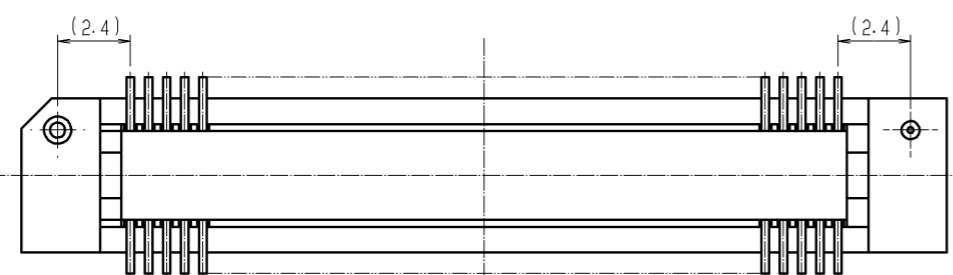
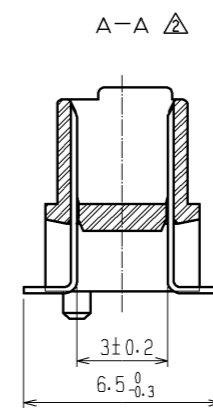
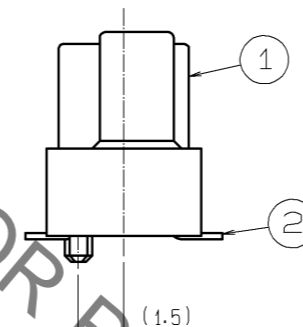
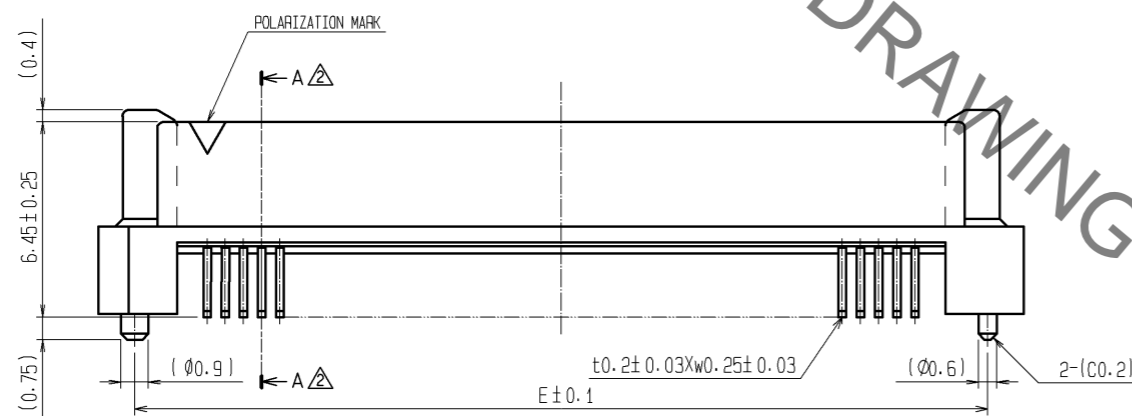
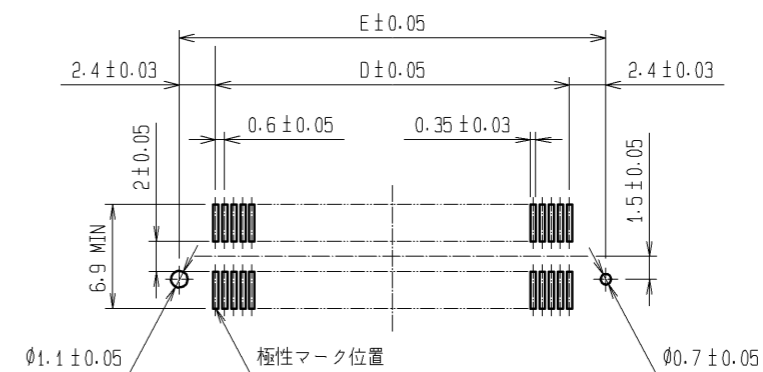


Sep.1.2021 Copyright 2021 HIROSE ELECTRIC CO., LTD. All Rights Reserved.
In case of consideration for using Automotive equipment / device which demand high reliability, kindly contact our sales window correspondents.



RECOMMENDED LAND PATTERN DIMENSION OF P.C.B. (MOUNTING SIDE)



DIMENSION TABLE OF CONNECTOR AND P.C.B. LAND PATTERN.

| PART No. | CODE No. | 5 | A | B | C | D | E |
|-------------------|-----------------|-----|-------|-------|-------|-------|-------|
| FX8C-60P-SV2(92) | CL578-0541-3-92 | 60 | 24.60 | 23.00 | 20.70 | 17.40 | 22.20 |
| FX8C-80P-SV2(92) | CL578-0543-9-92 | 80 | 30.60 | 29.00 | 26.70 | 23.40 | 28.20 |
| FX8C-100P-SV2(92) | CL578-0545-4-92 | 100 | 36.60 | 35.00 | 32.70 | 29.40 | 34.20 |
| FX8C-120P-SV2(92) | CL578-0546-7-92 | 120 | 42.60 | 41.00 | 38.70 | 35.40 | 40.20 |
| FX8C-140P-SV2(92) | CL578-0547-0-92 | 140 | 48.60 | 47.00 | 44.70 | 41.40 | 46.20 |

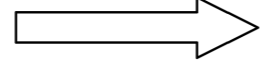
- NOTE 1. LEAD CO-PLANARITY SHALL BE 0.1mm MAX.
 2. EMBOSSED CARRIER TAPE PACKAGING SHALL BE APPLIED FOR THIS PRODUCT. SEE NEXT PAGE FOR DETAILS.
 3. FOR MODIFICATION, ETC., PREVENTIVE HOLE FOR SINK MARK MAY BE ADDED ACCORDING TO CIRCUMSTANCES.
 4. THE DIMENSIONS IN PARENTHESES ARE FOR REFERENCE.
 5 NUMBER OF CONTACTS.

| | | | | | | | |
|-------------------------|-----------------|---------------------------------|-------------------------------|--|-------------------------|----------------------|------------------|
| 2 | PHOSPHOR BRONZE | CONTACT AREA: GOLD 0.1µm min. | 4 | POLYESTER | (TOP COVER TAPE) | | |
| | | LEAD AREA: TIN-PLATING 1µm min. | | | (EMBOSSED CARRIER TAPE) | | |
| 1 | PPS | UNDER PLATING: NICKEL 1µm min. | 3 | PS | | | |
| NO. | MATERIAL | FINISH, REMARKS | NO. | MATERIAL | FINISH, REMARKS | | |
| UNITS mm | ⊙ | SCALE FREE | COUNT 6 | DESCRIPTION OF REVISIONS DIS-F-002239 | DESIGNED TS. MIYAKI | CHECKED HS. OZAWA | DATE 07.08.02 |
| APPROVED: YK. YOSHIMURA | | 03.02.15 | DRAWING NO. EDC3-151088-22 | | | | |
| CHECKED: HS. OKAWA | | 03.02.14 | PART NO. FX8C-*P-SV2(92) | | | | |
| DESIGNED: KY. NAKAMURA | | 03.02.12 | CODE NO. CL578 | | | | |
| DRAWN: SK. SUZUKI | | 03.02.03 | | | | | |

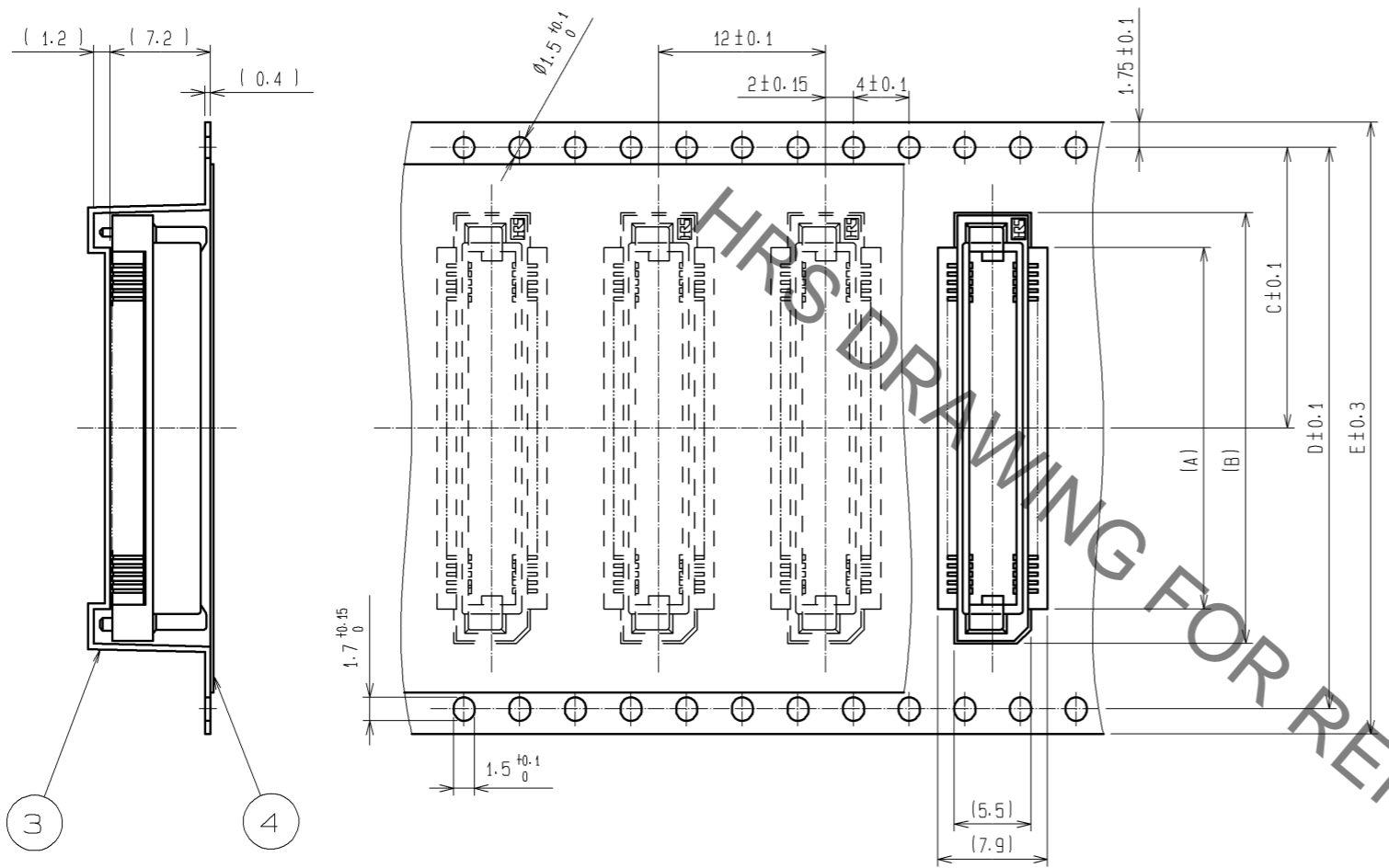
Sep.1.2021 Copyright 2021 HIROSE ELECTRIC CO., LTD. All Rights Reserved.
In case of consideration for using Automotive equipment / device which demand high reliability, kindly contact our sales window correspondents.

DRAWING FOR PACKING (FREE)

UNREELING DIRECTION

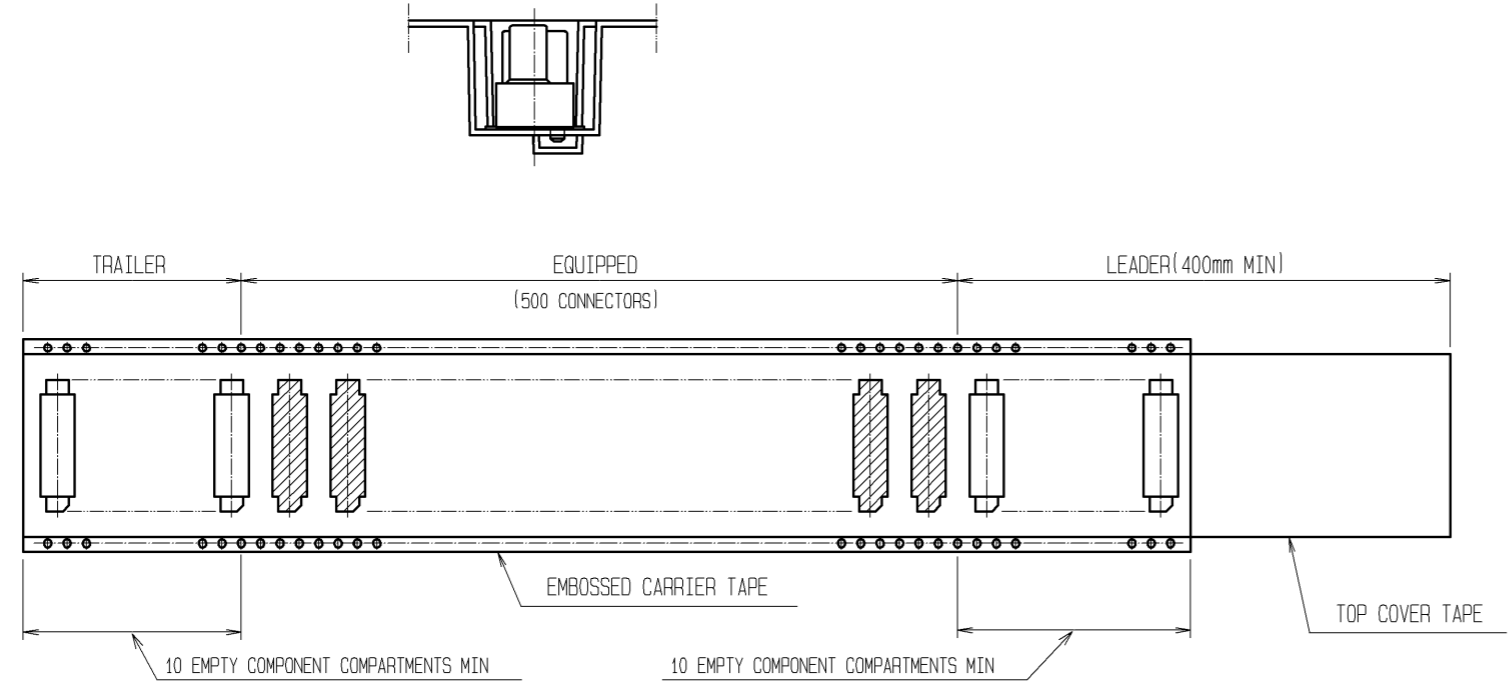


REEL DIMENSION



△△ DIMENSION TABLE OF EMBOSSED CARRIER TAPE AND REEL.

| PART No. | CODE No. | ② | A | B | C | D | E | F | G |
|-------------------|-----------------|-----|----|----|------|------|----|------|------|
| FX8C- 60P-SV2(92) | CL578-0541-3-92 | 60 | 20 | 25 | 20.2 | 40.4 | 44 | 44.4 | Ø330 |
| FX8C- 80P-SV2(92) | CL578-0543-9-92 | 80 | 26 | 31 | 20.2 | 40.4 | 44 | 44.4 | Ø330 |
| FX8C-100P-SV2(92) | CL578-0545-4-92 | 100 | 32 | 37 | 26.2 | 52.4 | 56 | 56.4 | Ø330 |
| FX8C-120P-SV2(92) | CL578-0546-7-92 | 120 | 38 | 43 | 26.2 | 52.4 | 56 | 56.4 | Ø380 |
| FX8C-140P-SV2(92) | CL578-0547-0-92 | 140 | 44 | 49 | 34.2 | 68.4 | 72 | 72.4 | Ø330 |



NOTE 1 1 REEL : 500 CONNECTORS
 ② NUMBER OF CONTACTS
 3 THE DIMENSIONS IN PARENTHESES ARE FOR REFERENCE. △

| | | |
|------------|-------------|-----------------|
| HRS | DRAWING NO. | EDC3-151088-22 |
| | PART NO. | FX8C-*P-SV2(92) |
| | CODE NO. | CL578 |
| | | △ 2/2 |

X-ON Electronics

Largest Supplier of Electrical and Electronic Components

Click to view similar products for [Board to Board & Mezzanine Connectors](#) category:

Click to view products by [Hirose](#) manufacturer:

Other Similar products are found below :

[589158040000018](#) [MDF7C-18P-2.54DSA\(55\)](#) [FCN-230C068-11](#) [FCN-268F012-G/BD](#) [FCN-268F036-G/BD](#) [FCN-268M012-G/0D](#) [FCN-268M024-G/1D](#) [FCN-723J004/1](#) [MIS-048-01-F-D-DP-K](#) [832-10-034-10-001000](#) [FX4C-80S-1.27DSA](#) [FCN-214Q030-G/0](#) [FCN-234P048-G/0](#) [FCN-235D050-G/C](#) [210-93-314-41-105000](#) [2-22603-0](#) [MDF7-40DP-2.54DSA\(55\)](#) [AXG720047](#) [MIT-114-03-F-D-K](#) [55323-1519](#) [DF33-2P-3.3DSA\(24\)](#) [YFT-20-05-H-03-SB-K](#) [503308-3040](#) [026-6203-PDB](#) [027-6203-PDB](#) [069159702701000](#) [10123981-102LF](#) [101A10019X](#) [55650-0588-C](#) [68682-310LF](#) [68684-306](#) [75140-7012](#) [87471-650](#) [YTW-30-07-H-Q-410-140](#) [FCN-268F024-G0D](#) [10124054-515LF](#) [68685-603](#) [8-1616154-3](#) [MIS-019-01-F-D](#) [FCN-268M024-G/3D](#) [FCN-268M036-G/BD](#) [20021832-06016C1LF](#) [KX15-20KLDL-E1000E](#) [AXE810124](#) [FCN-214J100-G/0](#) [FCN-230C068-E/S](#) [AXE812124](#) [AXE816124](#) [AXE720127](#) [354184](#)