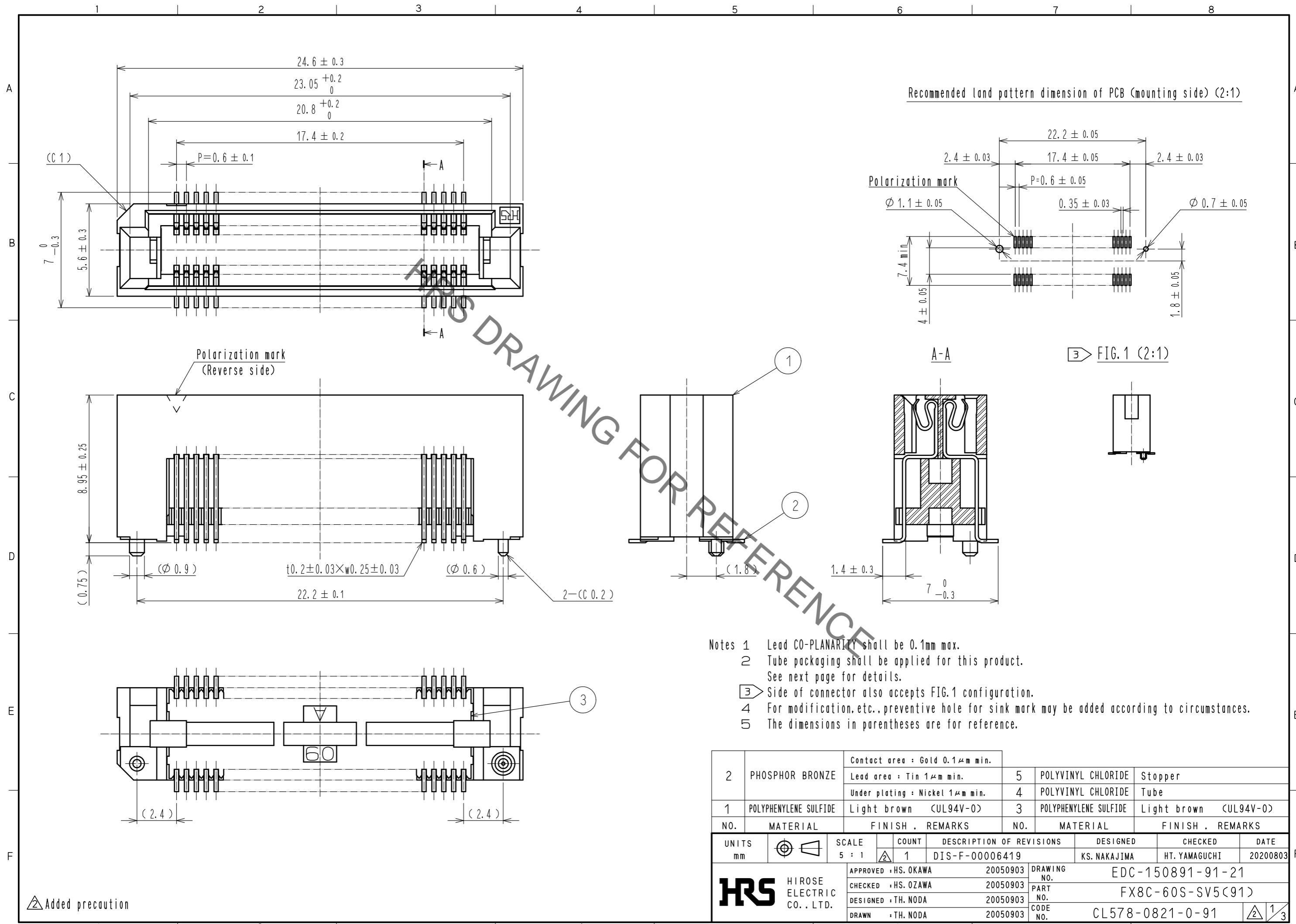


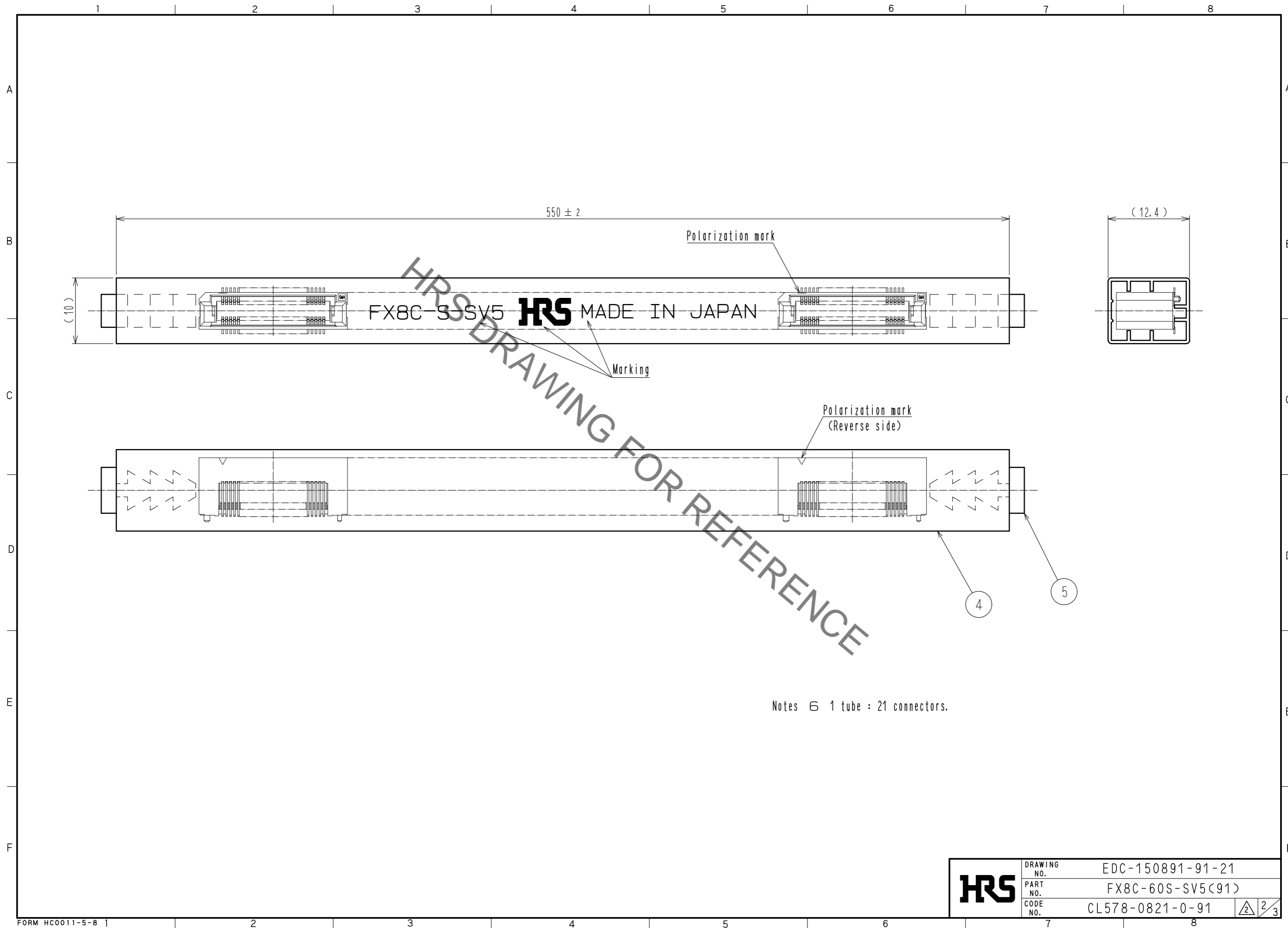
Sep.1.2021 Copyright 2021 HIROSE ELECTRIC CO., LTD. All Rights Reserved.
In case of consideration for using Automotive equipment / device which demand high reliability, kindly contact our sales window correspondents.



2	PHOSPHOR BRONZE	Contact area : Gold 0.1μm min.	5	POLYVINYL CHLORIDE	Stopper
		Lead area : Tin 1μm min.	4	POLYVINYL CHLORIDE	Tube
		Under plating : Nickel 1μm min.	3	POLYPHENYLENE SULFIDE	Light brown (UL94V-0)
1	POLYPHENYLENE SULFIDE	Light brown (UL94V-0)			
NO.	MATERIAL	FINISH . REMARKS	NO.	MATERIAL	FINISH . REMARKS
UNITS	mm	SCALE	5 : 1	COUNT	1
		DESCRIPTION OF REVISIONS		DESIGNED	KS. NAKAJIMA
		DIS-F-00006419		CHECKED	HT. YAMAGUCHI
				DATE	20200803
APPROVED : HS. OKAWA		20050903		DRAWING NO. EDC-150891-91-21	
CHECKED : HS. OZAWA		20050903		PART NO. FX8C-60S-SV5(91)	
DESIGNED : TH. NODA		20050903		CODE NO. CL578-0821-0-91	
DRAWN : TH. NODA		20050903			

Added precaution

Sep.1.2021 Copyright 2021 HIROSE ELECTRIC CO., LTD. All Rights Reserved.
In case of consideration for using Automotive equipment / device which demand high reliability, kindly contact our sales window correspondents.



Notes ⑥ 1 tube : 21 connectors.

HRS	DRAWING NO.	EDC-150891-91-21
	PART NO.	FX8C-60S-SV5(91)
	CODE NO.	CL578-0821-0-91

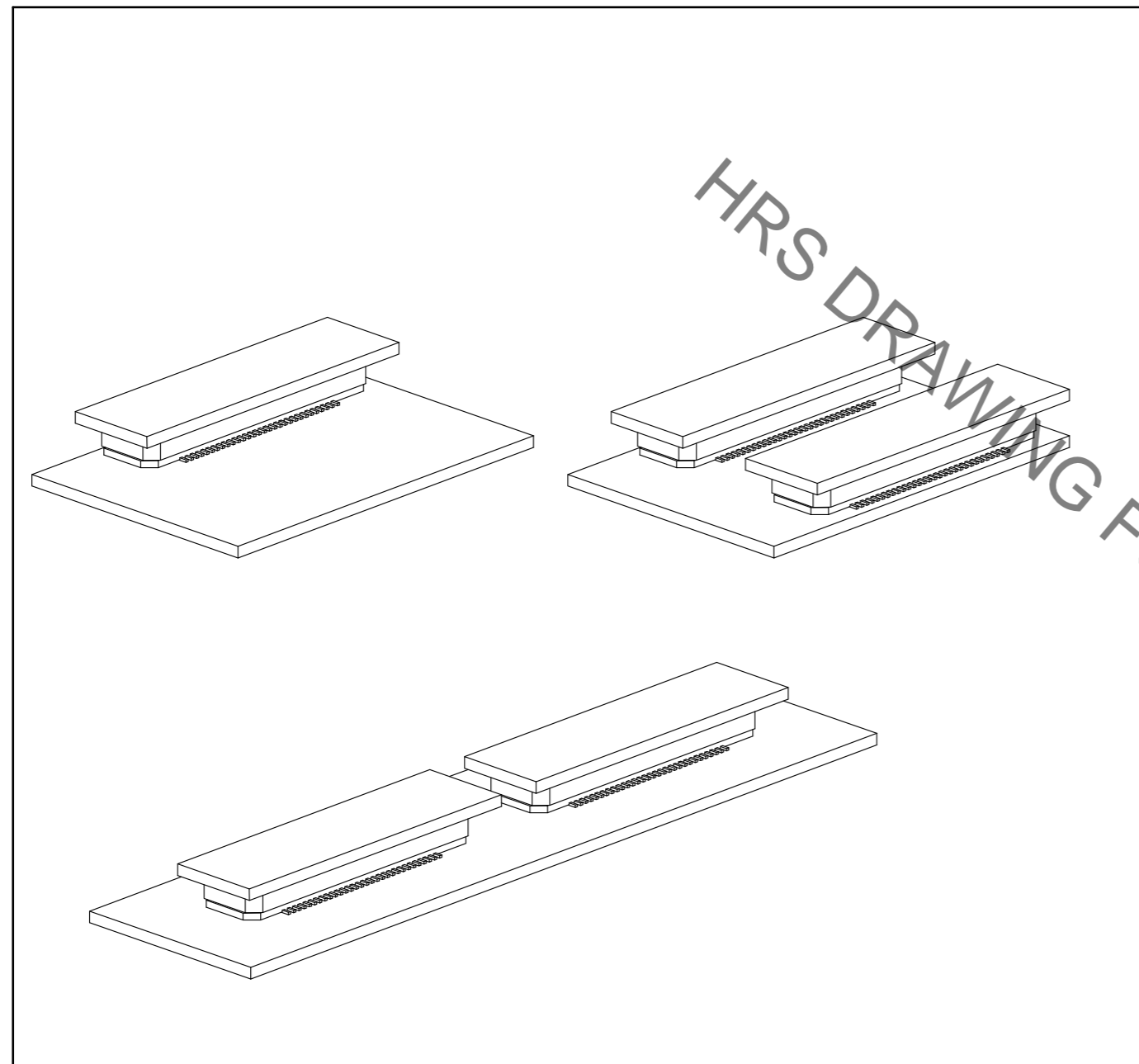
2/3

Sep.1.2021 Copyright 2021 HIROSE ELECTRIC CO., LTD. All Rights Reserved.
In case of consideration for using Automotive equipment / device which demand high reliability, kindly contact our sales window correspondents.

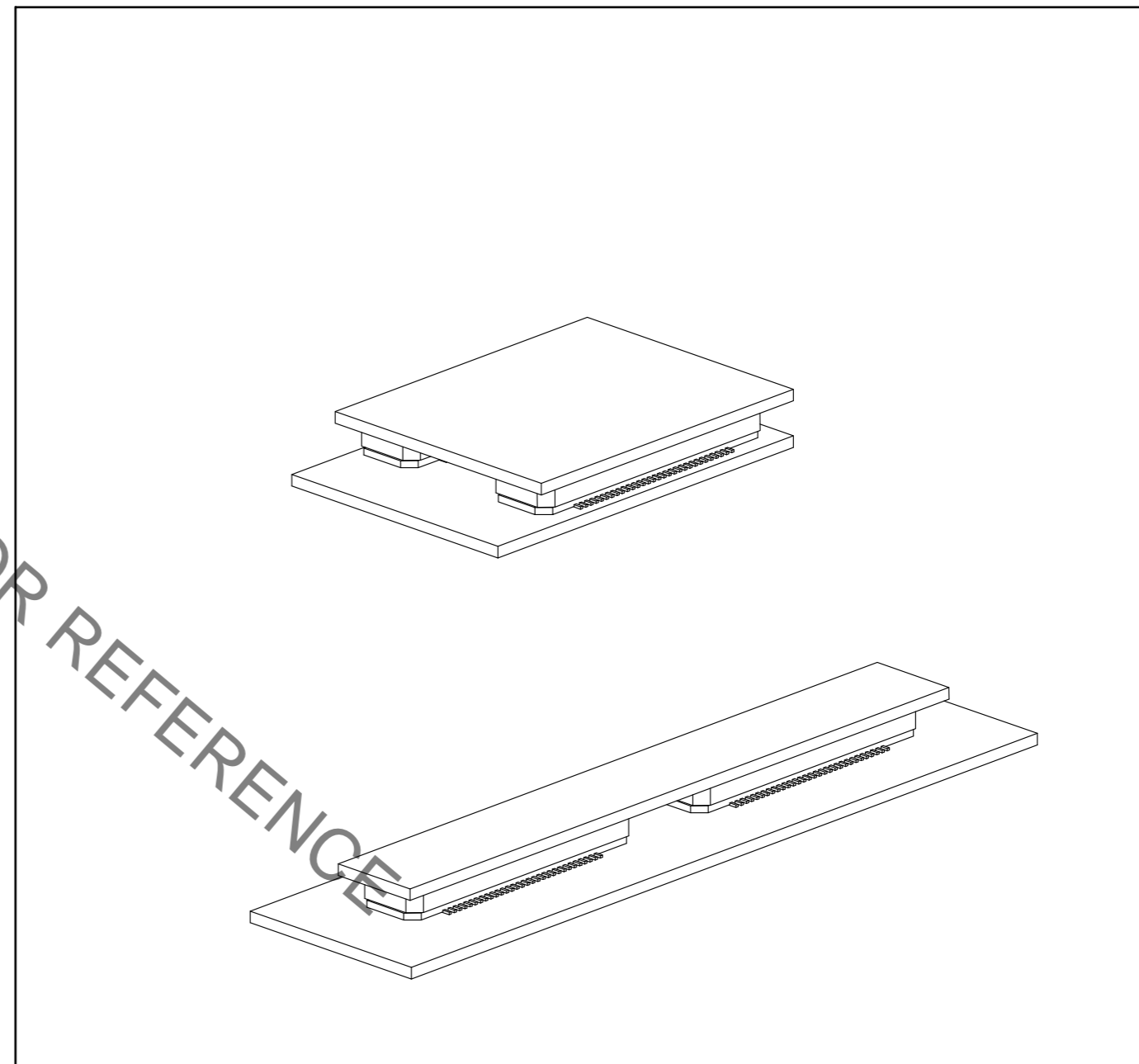
【使用上の注意】

コネクタが複数個実装された基板同士の嵌合は、コネクタ破損、変形が発生しますので、片側の基板を分割した状態でご使用ください。

OK



NG



HRS	DRAWING NO.	EDC-150891-91-21
	PART NO.	FX8C-60S-SV5(91)
	CODE NO.	CL578-0821-0-91
		3/3

X-ON Electronics

Largest Supplier of Electrical and Electronic Components

Click to view similar products for [Board to Board & Mezzanine Connectors](#) category:

Click to view products by [Hirose](#) manufacturer:

Other Similar products are found below :

[589158040000018](#) [MDF7C-18P-2.54DSA\(55\)](#) [FCN-230C068-11](#) [FCN-268F012-G/BD](#) [FCN-268F036-G/BD](#) [FCN-268M012-G/0D](#) [FCN-268M024-G/1D](#) [FCN-723J004/1](#) [MIS-048-01-F-D-DP-K](#) [832-10-034-10-001000](#) [FX4C-80S-1.27DSA](#) [FCN-214Q030-G/0](#) [FCN-234P048-G/0](#) [FCN-235D050-G/C](#) [210-93-314-41-105000](#) [2-22603-0](#) [MDF7-40DP-2.54DSA\(55\)](#) [AXG720047](#) [MIT-114-03-F-D-K](#) [55323-1519](#) [DF33-2P-3.3DSA\(24\)](#) [YFT-20-05-H-03-SB-K](#) [503308-3040](#) [026-6203-PDB](#) [027-6203-PDB](#) [069159702701000](#) [10123981-102LF](#) [101A10019X](#) [55650-0588-C](#) [68682-310LF](#) [68684-306](#) [75140-7012](#) [87471-650](#) [YTW-30-07-H-Q-410-140](#) [FCN-268F024-G0D](#) [10124054-515LF](#) [68685-603](#) [8-1616154-3](#) [MIS-019-01-F-D](#) [FCN-268M024-G/3D](#) [FCN-268M036-G/BD](#) [20021832-06016C1LF](#) [KX15-20KLDL-E1000E](#) [AXE810124](#) [FCN-214J100-G/0](#) [FCN-230C068-E/S](#) [AXE812124](#) [AXE816124](#) [AXE720127](#) [354184](#)