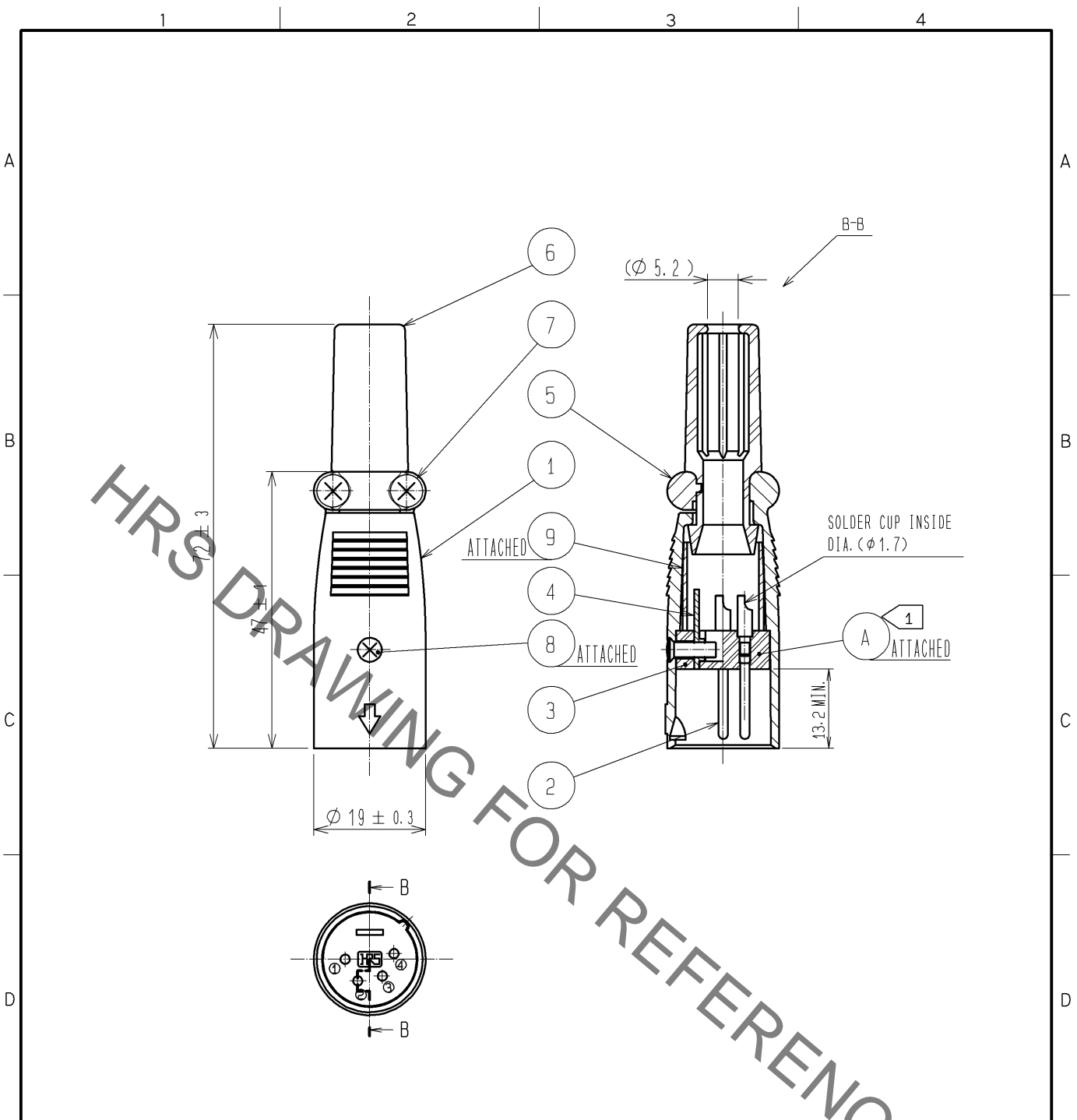


Jun.1.2021 Copyright 2021 HIROSE ELECTRIC CO., LTD. All Rights Reserved.
 In case of consideration for using Automotive equipment / device which demand high reliability, kindly contact our sales window correspondents.



NOTES 1 A SPECIFIES A BLOCK WHICH REF. NO. 2 TO NO. 4 ARE INCORPORATED.
2 THE CABLE PULL AND TWISTING STRENGTH AND OTHER CHARACTERISTICS MAY DIFFER, DEPENDING ON THE CABLE STRUCTURE. PLEASE CONFIRM BEFORE THE USE.

5	ZINC ALLOY	MATTE FINISH NICKEL PLATED					
4	BRASS	SILVER PLATING	9	FLEXIBLE POLYVINYL CHLORIDE (BLACK)			
3	POLYAMIDE	(GRAY)	8	STEEL	NICKEL PLATING M2.6X0.45X8		
2	BRASS	SILVER PLATING 2 μ m min.	7	BRASS	NICKEL PLATING M3X0.5X8		
1	ZINC ALLOY	MATTE FINISH NICKEL PLATED	6	CHLOROPRENE RUBBER (BLACK)			
NO.	MATERIAL	FINISH .	REMARKS	NO.	MATERIAL	FINISH .	REMARKS

UNITS mm	SCALE	COUNT	DESCRIPTION OF REVISIONS	DESIGNED	CHECKED	DATE
	1 : 1		DIS-C-001124	HS. KAWASHIMA	HY. KOBAYASHI	08.12.22

HRS HIROSE ELECTRIC CO., LTD.	APPROVED : EJ. KUNII	07.07.09	DRAWING NO.	EDC4-021270-76
	CHECKED : YH. YAMADA	07.07.06	PART NO.	HA216J-4P(76)
	DESIGNED : DS. MATSUNE	07.07.06	CODE NO.	CL104-0705-0-76
	DRAWN : MK. SATO	07.06.26		

X-ON Electronics

Largest Supplier of Electrical and Electronic Components

Click to view similar products for [XLR Connectors](#) category:

Click to view products by [Hirose](#) manufacturer:

Other Similar products are found below :

[707-0300](#) [8800235](#) [91101181024](#) [PPCB-H](#) [A3F01](#) [A3M01](#) [QGP3F](#) [HA16PRQ-3SE\(71\)](#) [AA3FL](#) [AAA4FWZ](#) [AAA4MWZ](#) [AC3-MIC](#) [AC4-MIC](#) [AC5FPZB](#) [AC6AFDZV](#) [D4FB](#) [DE4MW](#) [DHNFBAG](#) [E3MBAUSW](#) [NA2FP-UW](#) [NA3MP-UW](#) [NC3FBHR1-0](#) [NC3FD-H-0](#) [NC3FK-V](#) [NC3FXY-B](#) [NC3MK-V](#) [NC3MXY](#) [NC5FX-HD-B](#) [NC6MSX-BAG](#) [91210071096](#) [SL05](#) [99.265.0400.0](#) [A3F04](#) [AC3FG](#) [AC4-FCP](#) [AC4FPZ](#) [AQG4F](#) [2504FP](#) [30-498-2](#) [R6MZ](#) [3FD-H-I](#) [3FD-H-I-\(0\)](#) [3FD-H-I-B](#) [3FD-V-I](#) [3FD-V-I-\(0\)](#) [3FD-V-I-B](#) [3MD-H-I-B](#) [3MD-V-I](#) [3MD-V-I-B](#) [TA01](#)