

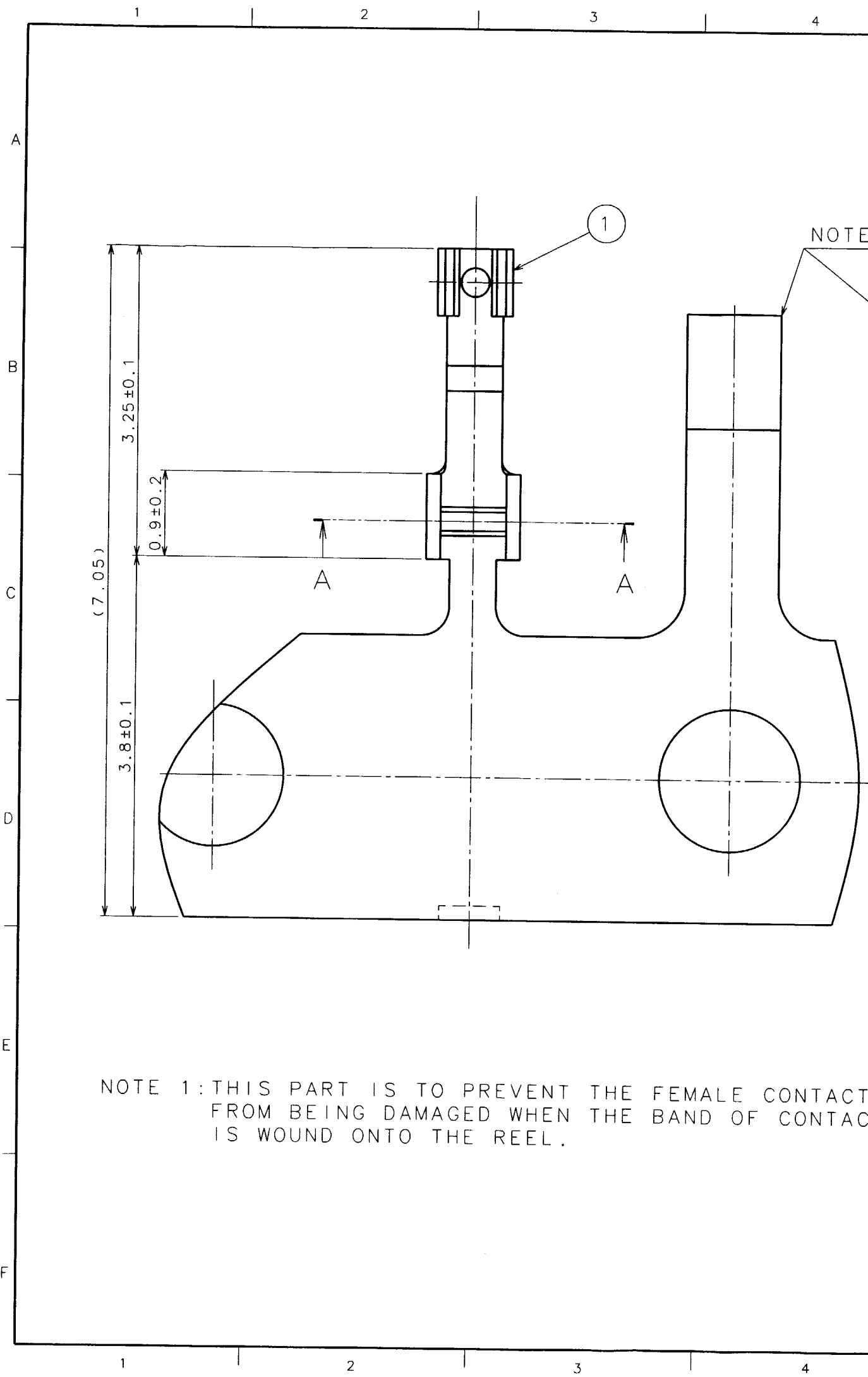
RoHS2(10 substances conformity)
 DRAWING FOR REFERENCE: This is subject to change without notice
 In cases where the application will demand a high level of reliability, such as automotive, please contact a company representative for further information.

COUNT	DESCRIPTION OF REVISIONS	BY	CHKD	DATE	COUNT	DESCRIPTION OF REVISIONS	BY	CHKD	DATE
△					△				
△					△				
APPLICABLE STANDARD									
RATING	OPERATING TEMPERATURE RANGE	-40°C TO +90°C(90%RH MAX)			STORAGE TEMPERATURE RANGE	-40°C TO +90°C(90%RH MAX)			
	POWER	—W			CHARACTERISTIC IMPEDANCE	—Ω (— TO — GHz)			
	PECULIARITY	---			APPLICABLE CABLE	DFS111-UL1979 :JUNKOSHA CO.,LTD CO-6F·FH-SB :HITACHI CABLE,LTD 0.8DS-PBE:SUMITOMO ELECTRIC INDUSTRIES,LTD.			
SPECIFICATIONS									
ITEM		TEST METHOD			REQUIREMENTS			QT	AT
CONSTRUCTION									
GENERAL EXAMINATION		VISUALLY AND BY MEASURING INSTRUMENT.			ACCORDING TO DRAWING.			○	○
MARKING		CONFIRMED VISUALLY.						-	-
ELECTRIC CHARACTERISTICS									
CONTACT RESISTANCE		1 0 mA MAX (DC OR 1000 Hz).			CENTER CONTACT		2 0 mΩ MAX.	○	-
					OUTER CONTACT		— mΩ MAX.	-	-
INSULATION RESISTANCE		— V DC.			— MΩ MIN.			-	-
VOLTAGE PROOF		— V AC FOR 1 min.CURRENT LEAKAGE 2mA MAX			NO FLASHOVER OR BREAKDOWN.			-	-
VOLTAGE STANDING WAVE RATIO		FREQUENCY — TO — GHz.			VSWR		— MAX.	-	-
INSERTION LOSS		FREQUENCY — TO — GHz			— dB MAX.			-	-
MECHANICAL CHARACTERISTICS									
CONTACT INSERTION AND EXTRACTION FORCES		φ 0.475 ⁰ _{-0.004} BY STEEL GAUGE.			INSERTION FORCE		— N MAX.	-	-
					EXTRACTION FORCE		0.2 N MIN.	○	-
INSERTION AND WITHDRAWAL FORCES		MEASURED BY APPLICABLE CONNECTOR.			INSERTION FORCE		— N MAX.	-	-
					EXTRACTION FORCE		— N MIN.	-	-
MECHANICAL OPERATION		5 0 TIMES INSERTIONS AND EXTRACTIONS. (400-600 cycles per hour)			① CONTACT RESISTANCE: CENTER CONTACT 2 5 mΩMAX. OUTER CONTACT — mΩMAX			○	-
					② NO DAMAGE, CRACK AND LOOSENESS OF PARTS.				
VIBRATION		FREQUENCY — TO — Hz SINGLE AMPLITUDE — mm, — m/s ² AT — CYCLES FOR DIRECTIONS.			① NO ELECTRICAL DISCONTINUITY OF — μs.			-	-
					② NO DAMAGE, CRACK AND LOOSENESS OF PARTS.			-	-
SHOCK		— m/s ² DIRECTIONS OF PULSE — ms AT — TIMES FOR — DIRECTIONS.						-	-
CABLE CLAMP ROBUSTNESS (AGAINST CABLE PULL)		APPLYING A PULL FORCE THE CABLE AXIALLY AT 1 0 N MAX.			① NO WITHDRAWAL AND BREAKAGE OF CABLE			○	-
					② NO BREAKAGE OF CLAMP.				
ENVIRONMENTAL CHARACTERISTICS									
DAMP HEAT,CYCLIC		EXPOSED AT — TO — °C, — % TOTAL — CYCLES (— h)			① INSULATION RESISTANCE: — MΩ MIN. (AT HIGH HUMIDITY)			-	-
					② INSULATION RESISTANCE: — MΩ MIN (AT DRY)				
					③ NO DAMAGE, CRACK AND LOOSENESS OF PARTS.				
RAPID CHANGE OF TEMPERATURE		TEMPERATURE — → — → — → — °C TIME — → — → — → — min. UNDER — CYCLES.			NO DAMAGE, CRACK AND LOOSENESS OF PARTS.			-	-
CORROSION SALT MIST		EXPOSED IN 5 % SALT WATER SPRAY FOR 4 8 h.			NO HEAVY CORROSION.			○	-
REMARKS									
				DRAWN	DESIGNED	CHECKED	APPROVED	RELEASED	
				<i>Tomiyama</i>	<i>Tomiyama</i>	<i>H. Shimizu</i>	<i>I. Mitani</i>		
				98.7.23	98.7.23	98.7.23	98.7.23		
Unless otherwise specified, refer to JIS C 5402.									
Note QT:Qualification Test AT:Assurance Test O:Applicable Test									
HRS HIROSE ELECTRIC CO., LTD.				SPECIFICATION SHEET			PART NO. H.FL-LP FEMALE CONTACT		
CODE NO.(OLD)		DRAWING NO.		PART NO.				1	
CL		ELC4-047069		CL331-0511-2				1	

TO
RF
USA

RoHS2(10 substances conformity)
DRAWING FOR REFERENCE: This is subject to change without notice

In cases where the application will demand a high level of reliability, such as automotive, please contact a company representative for further information.



NOTE 1: THIS PART IS TO PREVENT THE FEMALE CONTACT FROM BEING DAMAGED WHEN THE BAND OF CONTACT IS WOUND ONTO THE REEL.

TO
RF
USA

X-ON Electronics

Largest Supplier of Electrical and Electronic Components

Click to view similar products for [RF Connectors / Coaxial Connectors](#) category:

Click to view products by [Hirose](#) manufacturer:

Other Similar products are found below :

[8915-1511-000](#) [89674-0827](#) [6001-7071-019](#) [6002-7051-003](#) [6002-7551-202](#) [6059674-1](#) [619550-1](#) [630059-000](#) [M39030/3-01N](#) [M3933/25-36N](#) [6500-7071-046](#) [6769](#) [CX050L2AQ](#) [7002-1542-011](#) [7004-1512-000](#) [7009-1511-004](#) [7010-1511-000](#) [7029-1511-060](#) [7101-1541-010](#) [7101-1571-002](#) [7105-1521-002](#) [7145-1521-002](#) [7203-1571-003](#) [7209-1511-011](#) [7210-1511-015](#) [7210-1511-019](#) [73137-5015](#) [73216-2241](#) [7325-1512-000](#) [73404-2300](#) [7405-1521-005](#) [7405-1521-802](#) [7406-1521-005](#) [8527](#) [8547](#) [FS11V](#) [8808-1511-001](#) [9049-9513-000](#) [9074-9513-000](#) [9101-9573-002](#) [910A205F](#) [9130-9573-002](#) [PL11SC-026](#) [PL375-33](#) [PL40-5](#) [PL71-9](#) [PL74C-221](#) [PL75MC-217](#) [PL803-7](#) [980-8666-005](#)