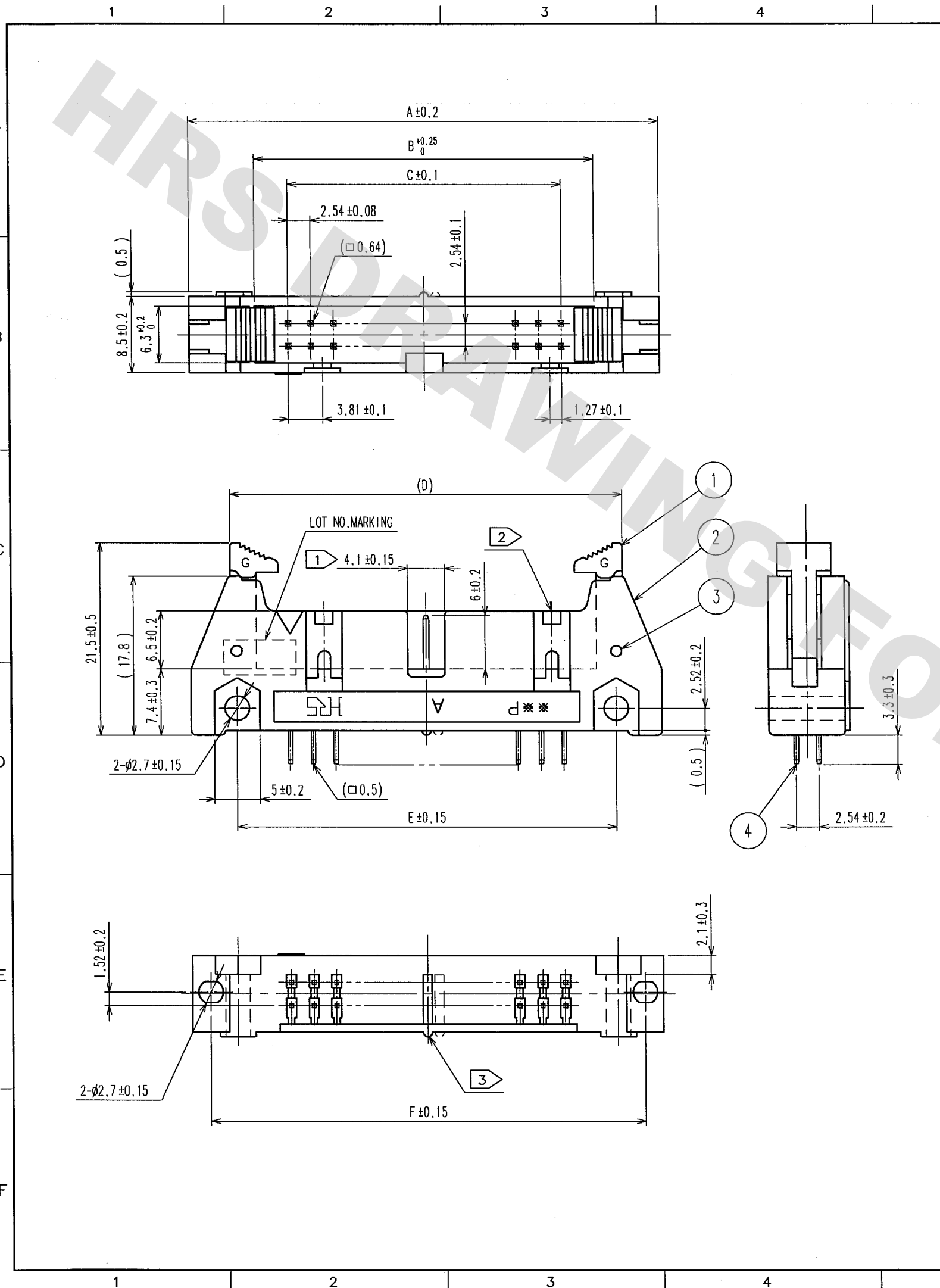


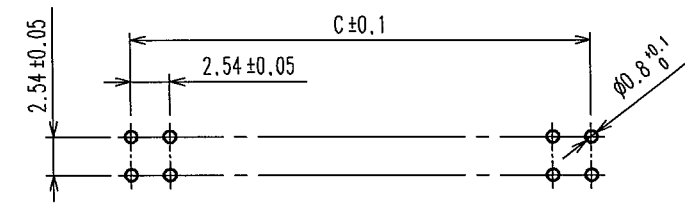
DRAWING FOR REFERENCE: This is subject to change without notice
08/11/2012

TO
PCK



COUNT	DESCRIPTION OF REVISIONS	BY	CHKD	DATE	COUNT	DESCRIPTION OF REVISIONS	BY	CHKD	DATE

RECOMMEND PC BOARD HOLE PATTERN



- NOTES
- ① ② THE NUMBER OF POLARIZING SLOT AND KEY INSTALLED POSITIONS CHANGES ACCORDING TO PRODUCTS. REFER TO THE LIST AS SHOWN BELOW.
 - ③ THE SPACER MOVES TO THE RIGHT ACCORDING TO THE NUMBER OF CONTACTS.
 - 4. THE 10, 50, 60 AND 64 CONTACT CONNECTORS CONTAIN TWO TYPES OF POLARIZING SLOTS. USE PRODUCTS, CONFIRMING ①, ②.
 - ⑤ THE DIMENSIONS IN PARENTHESES SHOWS WHEN THE LOCK OPEN OUT.
 - 6. ** INDICATES THE NUMBER OF CONTACTS.
 - 7. THE DIMENSIONS IN PARENTHESES ARE FOR REFERENCE.
 - ⑧ NUMBER OF CONTACTS.

PART No.	CODE No.	⑧	A	B	C	D	⑤	E	E	①	②
HIF3BAG-10PA-2.54DSA(71)	CL610-0291-1-71	10								NONE	ONE ON RIGHT SIDE.
HIF3BDG-10PA-2.54DSA(71)	CL610-0611-0-71	10	32.0	17.5	10.16	23.5(41.5)	21.8	27.9		NONE	
HIF3BAG-14PA-2.54DSA(71)	CL610-0292-4-71	14	37.1	22.6	15.24	28.6(46.6)	26.9	33.0		ONE ON RIGHT SIDE.	
HIF3BAG-16PA-2.54DSA(71)	CL610-0293-7-71	16	39.6	25.1	17.78	31.1(49.1)	29.5	35.5		ONE AT CENTER	
HIF3BAG-20PA-2.54DSA(71)	CL610-0294-0-71	20	44.7	30.2	22.86	36.2(54.2)	34.5	40.6		ONE AT CENTER	
HIF3BAG-26PA-2.54DSA(71)	CL610-0295-2-71	26	52.3	37.8	30.48	43.8(61.8)	42.2	48.3		ONE AT CENTER	
HIF3BAG-30PA-2.54DSA(71)	CL610-0296-5-71	30	57.4	42.9	35.56	48.9(66.9)	47.2	53.3		ONE AT CENTER	
HIF3BAG-34PA-2.54DSA(71)	CL610-0297-8-71	34	62.5	48.0	40.64	54.0(72.0)	52.3	58.4		ONE AT CENTER	
HIF3BAG-40PA-2.54DSA(71)	CL610-0298-0-71	40	70.1	55.6	48.26	61.6(79.6)	59.9	66.0		ONE ON RIGHT AND LEFT SIDES, RESP.	
HIF3BAG-50PA-2.54DSA(71)	CL610-0299-3-71	50	82.8	68.3	60.96	74.3(92.3)	72.6	78.7		ONE ON RIGHT AND LEFT SIDES, RESP.	
HIF3BBG-50PA-2.54DSA(71)	CL610-0591-5-71	50								ONE AT CENTER	
HIF3BAG-60PA-2.54DSA(71)	CL610-0300-0-71	60	95.5	81.0	73.66	87.0(105)	85.3	91.4		ONE ON RIGHT AND LEFT SIDES, RESP.	
HIF3BBG-60PA-2.54DSA(71)	CL610-0592-8-71	60								ONE AT CENTER	
HIF3BAG-64PA-2.54DSA(71)	CL610-0301-3-71	64	100.6	86.1	78.74	92.1(110.1)	90.4	96.5		ONE ON RIGHT AND LEFT SIDES, RESP.	
HIF3BBG-64PA-2.54DSA(71)	CL610-0593-0-71	64								ONE AT CENTER	

3	STAINLESS		4	BRASS	CONTACT AREA : GOLD 0.2μm min
1, 2	PBT	BLACK UL94V-0			DIP AREA : TIN-PLATING 2μm min
					UNDER PLATING : NICKEL 2.5μm min
NO.	MATERIAL	FINISH, REMARKS	NO.	MATERIAL	FINISH, REMARKS
CODE NO. (OLD) CL			DRAWN I. OKAYAMA	DESIGNED K. NAKAMURA	CHECKED K. Ozawa
			APPROVED H. Ozawa	RELEASED ..	
			04.07.06	04.07.06	04.07.06
					04.07.08
DRAWING NO. EDC3-152861-21			PART NO. BAG HIF3BBG-***PA-2.54DSA(71) BDG		
SCALE FREE			CODE NO. CL610		
UNITS mm			HIROSE ELECTRIC CO., LTD		



X-ON Electronics

Largest Supplier of Electrical and Electronic Components

Click to view similar products for [Headers & Wire Housings](#) category:

Click to view products by [Hirose](#) manufacturer:

Other Similar products are found below :

[892-18-020-10-001101](#) [58102-G61-06LF](#) [582553-1](#) [0009485154](#) [009176003701906](#) [0050291907](#) [LY20-4P-DT1-P1E-BR](#) [02.125.8002.8](#)
[609-3404](#) [61062-3](#) [622-0430](#) [622-3653LF](#) [63453-116](#) [636-1030](#) [636-1427](#) [636-3427](#) [636-4007](#) [641938-9](#) [641991-4](#) [644827-2](#) [65817-010LF](#)
[65817-015LF](#) [65863-015LF](#) [66207-023LF](#) [67095-007LF](#) [67601157](#) [68648-049](#) [70.362.1628.0](#) [70-4210](#) [70-4226B](#) [70-4853B](#) [707-5020](#) [707-5028](#) [71.350.2428.0](#) [71918-208LF](#) [71961-016LF](#) [733-134](#) [733-162](#) [754199-000](#) [760-3052](#) [787-8014-00](#) [79531-3000](#) [FCN-360C032-B](#) [FCN-367T-T012/H](#) [FCN-723D010/2](#) [80.063.4001.1](#) [800-90-001-10-001000](#) [800-90-010-10-002000](#) [801-43-002-10-013000](#) [801-43-006-10-002000](#)