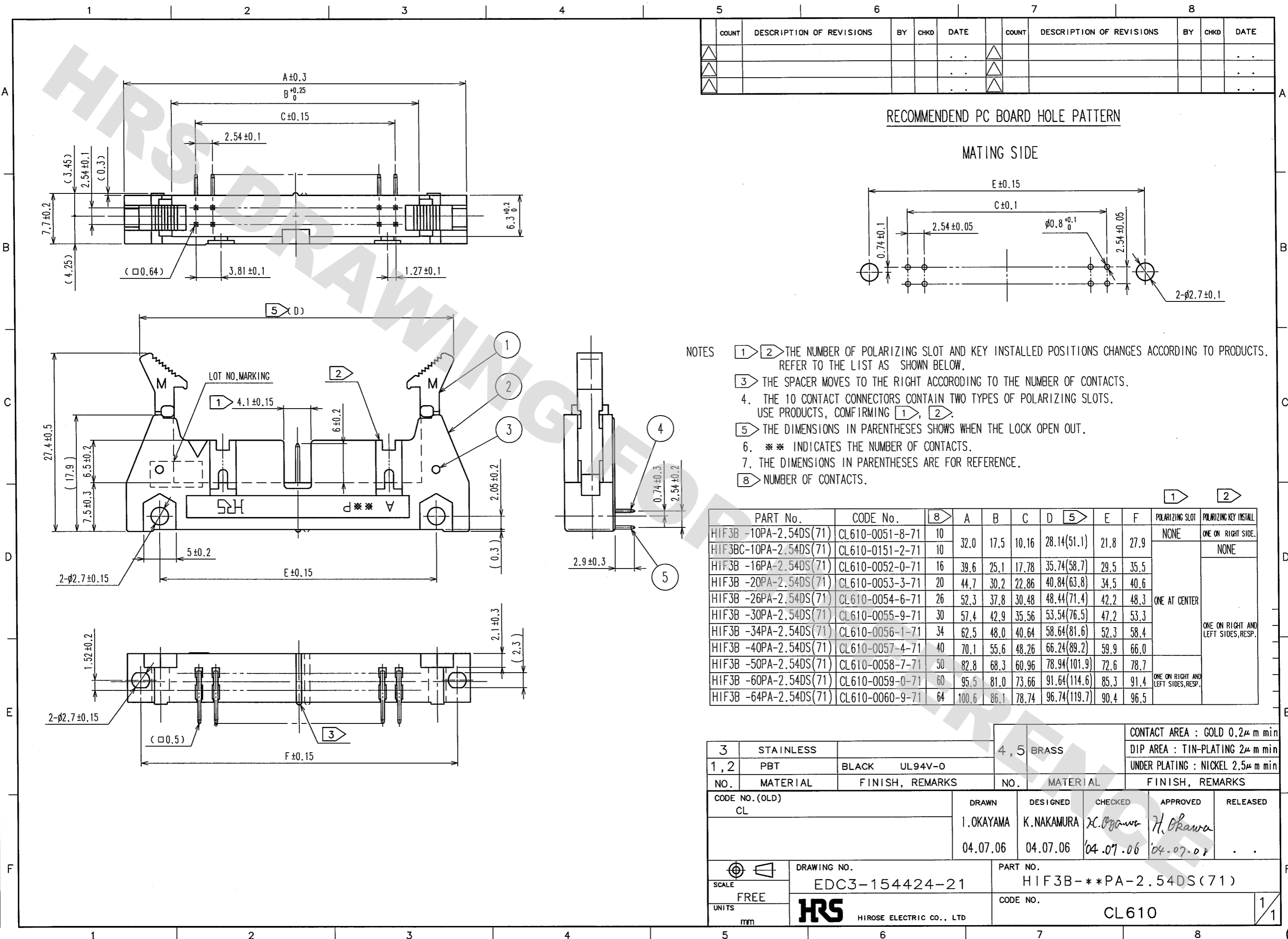


DRAWING FOR REFERENCE: This is subject to change without notice
08/11/2012



- NOTES
- ① ② THE NUMBER OF POLARIZING SLOT AND KEY INSTALLED POSITIONS CHANGES ACCORDING TO PRODUCTS. REFER TO THE LIST AS SHOWN BELOW.
 - ③ THE SPACER MOVES TO THE RIGHT ACCORDING TO THE NUMBER OF CONTACTS.
 - ④ THE 10 CONTACT CONNECTORS CONTAIN TWO TYPES OF POLARIZING SLOTS. USE PRODUCTS, CONFIRMING ①, ②.
 - ⑤ THE DIMENSIONS IN PARENTHESES SHOWS WHEN THE LOCK OPEN OUT.
 - ⑥ ** INDICATES THE NUMBER OF CONTACTS.
 - ⑦ THE DIMENSIONS IN PARENTHESES ARE FOR REFERENCE.
 - ⑧ NUMBER OF CONTACTS.

PART No.	CODE No.	⑧	A	B	C	D	⑤	E	F	POLARIZING SLOT	POLARIZING KEY INSTALL
HIF3B -10PA-2.54DS(71)	CL610-0051-8-71	10								NONE	ONE ON RIGHT SIDE.
HIF3BC-10PA-2.54DS(71)	CL610-0151-2-71	10	32.0	17.5	10.16	28.14(51.1)	21.8	27.9		NONE	
HIF3B -16PA-2.54DS(71)	CL610-0052-0-71	16	39.6	25.1	17.78	35.74(58.7)	29.5	35.5		ONE AT CENTER	ONE ON RIGHT AND LEFT SIDES, RESP.
HIF3B -20PA-2.54DS(71)	CL610-0053-3-71	20	44.7	30.2	22.86	40.84(63.8)	34.5	40.6			
HIF3B -26PA-2.54DS(71)	CL610-0054-6-71	26	52.3	37.8	30.48	48.44(71.4)	42.2	48.3			
HIF3B -30PA-2.54DS(71)	CL610-0055-9-71	30	57.4	42.9	35.56	53.54(76.5)	47.2	53.3			
HIF3B -34PA-2.54DS(71)	CL610-0056-1-71	34	62.5	48.0	40.64	58.64(81.6)	52.3	58.4			
HIF3B -40PA-2.54DS(71)	CL610-0057-4-71	40	70.1	55.6	48.26	66.24(89.2)	59.9	66.0		ONE ON RIGHT AND LEFT SIDES, RESP.	
HIF3B -50PA-2.54DS(71)	CL610-0058-7-71	50	82.8	68.3	60.96	78.94(101.9)	72.6	78.7			
HIF3B -60PA-2.54DS(71)	CL610-0059-0-71	60	95.5	81.0	73.66	91.64(114.6)	85.3	91.4			
HIF3B -64PA-2.54DS(71)	CL610-0060-9-71	64	100.6	86.1	78.74	96.74(119.7)	90.4	96.5			

3	STAINLESS		4, 5	BRASS	CONTACT AREA : GOLD 0.2μ m min
1, 2	PBT	BLACK UL94V-0			DIP AREA : TIN-PLATING 2μ m min
NO.	MATERIAL	FINISH, REMARKS	NO.	MATERIAL	FINISH, REMARKS

CODE NO. (OLD) CL	DRAWN I. OKAYAMA 04.07.06	DESIGNED K. NAKAMURA 04.07.06	CHECKED H. Okawa 04.07.06	APPROVED H. Okawa 04.07.06	RELEASED
----------------------	---------------------------------	-------------------------------------	---------------------------------	----------------------------------	----------

SCALE FREE	DRAWING NO. EDC3-154424-21	PART NO. HIF3B-**PA-2.54DS(71)
UNITS mm	HRS HIROSE ELECTRIC CO., LTD	CODE NO. CL610

TO
PCK



X-ON Electronics

Largest Supplier of Electrical and Electronic Components

Click to view similar products for [Headers & Wire Housings](#) category:

Click to view products by [Hirose](#) manufacturer:

Other Similar products are found below :

[892-18-020-10-001101](#) [58102-G61-06LF](#) [582553-1](#) [0009485154](#) [009176003701906](#) [0050291907](#) [LY20-4P-DT1-P1E-BR](#) [02.125.8002.8](#)
[609-3404](#) [61062-3](#) [622-0430](#) [622-3653LF](#) [63453-116](#) [636-1030](#) [636-1427](#) [636-3427](#) [636-4007](#) [641938-9](#) [641991-4](#) [644827-2](#) [65817-010LF](#)
[65817-015LF](#) [65863-015LF](#) [66207-023LF](#) [67095-007LF](#) [67601157](#) [68648-049](#) [70.362.1628.0](#) [70-4210](#) [70-4226B](#) [70-4853B](#) [707-5020](#) [707-5028](#) [71.350.2428.0](#) [71918-208LF](#) [71961-016LF](#) [733-134](#) [733-162](#) [754199-000](#) [760-3052](#) [787-8014-00](#) [79531-3000](#) [FCN-360C032-B](#) [FCN-367T-T012/H](#) [FCN-723D010/2](#) [80.063.4001.1](#) [800-90-001-10-001000](#) [800-90-010-10-002000](#) [801-43-002-10-013000](#) [801-43-006-10-002000](#)