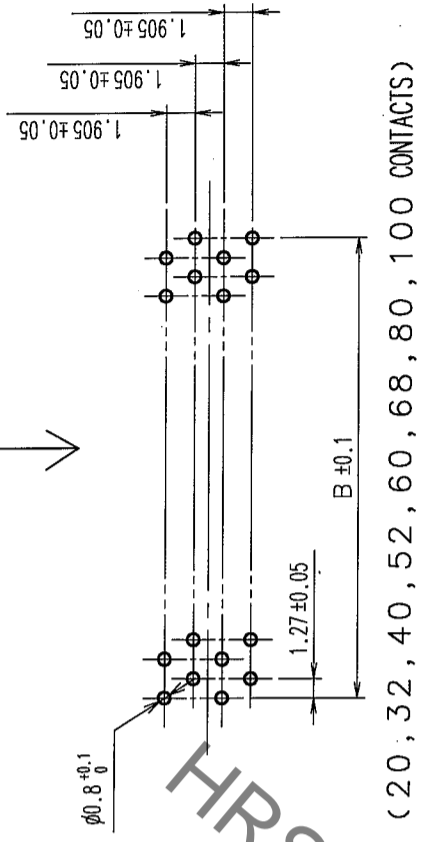


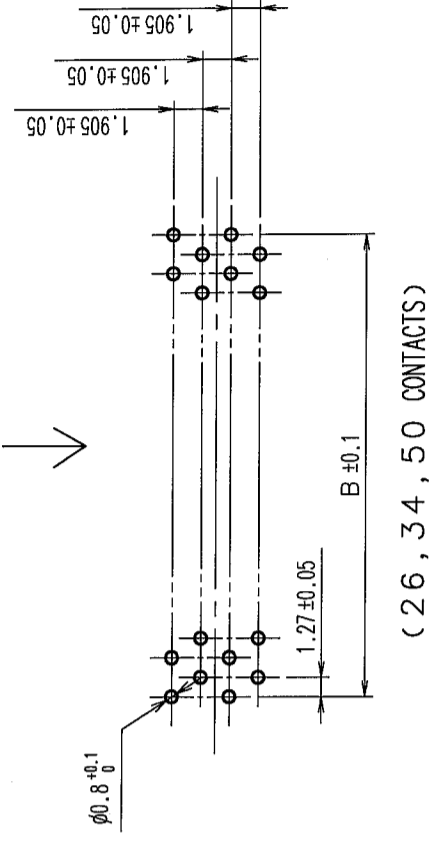
COUNT	DESCRIPTION OF REVISIONS	BY	CHKD	DATE	COUNT	DESCRIPTION OF REVISIONS	BY	CHKD	DATE
△					△				
△					△				
△					△				

RECOMMENDED P.C.B. LAND PATTERN  
(MOUNT SIDE)

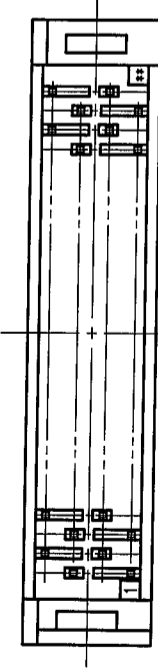
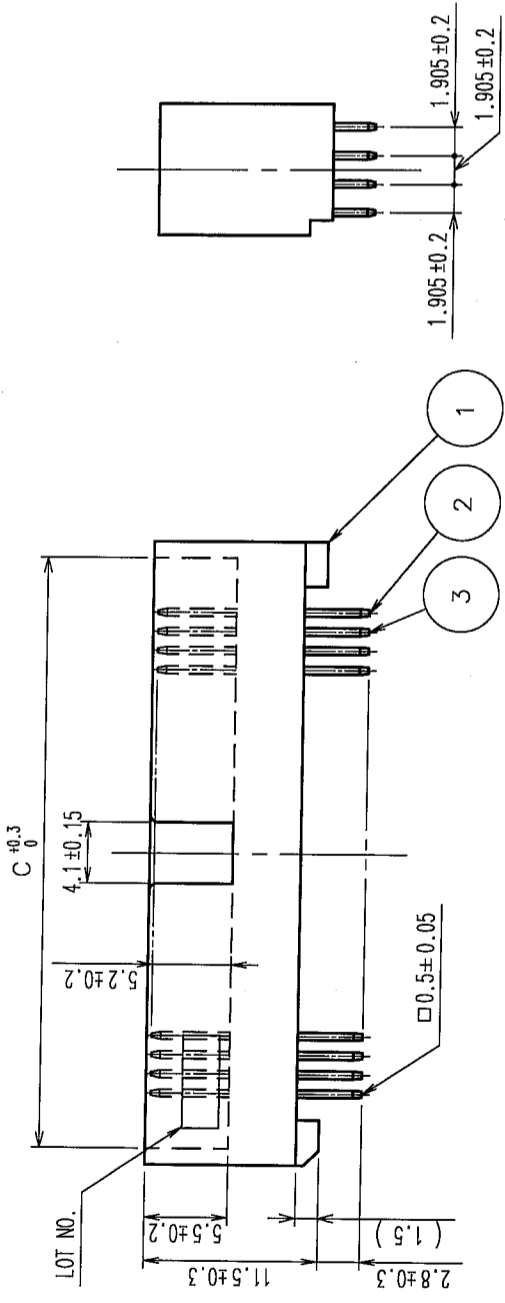
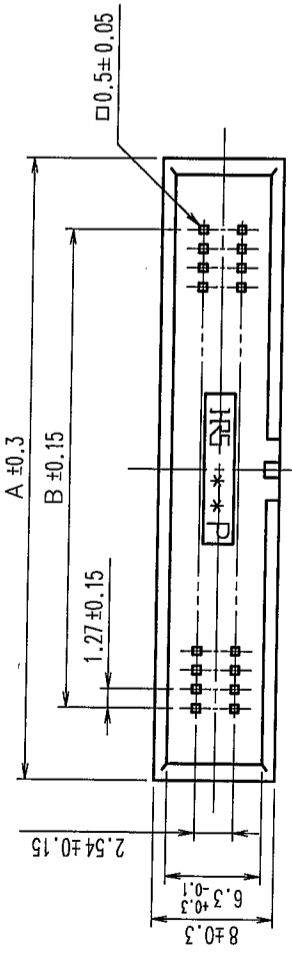
POLARIZING SLOT SIDE



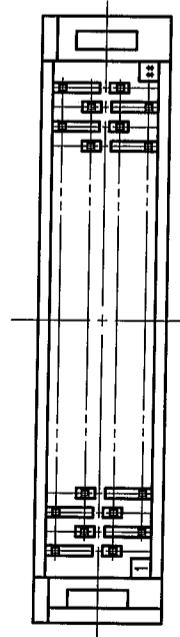
POLARIZING SLOT SIDE



HRS DRAWING FOR REFERENCE



(20, 32, 40, 52, 60, 68, 80, 100 CONTACTS)



(26, 34, 50 CONTACTS)

PART No.	CODE No.	NUMBER OF CONTACTS	A	B	C
HIF6A-20PA-1.27DSA(71)	CL631-0301-4-71	20	20.95	11.43	18.75
HIF6A-26PA-1.27DSA(71)	CL631-0302-7-71	26	24.76	15.24	22.56
HIF6A-32PA-1.27DSA(71)	CL631-0303-0-71	32	28.57	19.05	26.37
HIF6A-34PA-1.27DSA(71)	CL631-0304-2-71	34	29.84	20.32	27.64
HIF6A-40PA-1.27DSA(71)	CL631-0305-5-71	40	33.65	24.13	31.45
HIF6A-50PA-1.27DSA(71)	CL631-0306-8-71	50	40.00	30.48	37.80
HIF6A-52PA-1.27DSA(71)	CL631-0307-0-71	52	41.27	31.75	39.07
HIF6A-60PA-1.27DSA(71)	CL631-0308-3-71	60	46.35	36.83	44.15
HIF6A-68PA-1.27DSA(71)	CL631-0309-6-71	68	51.43	41.91	49.23
HIF6A-80PA-1.27DSA(71)	CL631-0310-5-71	80	59.05	49.53	56.85
HIF6A-100PA-1.27DSA(71)	CL631-0311-8-71	100	71.75	62.23	69.55

NOTE 1. THE DIMENSIONS IN PARENTHESES ARE FOR REFERENCE.

1	PBT	BLACK	UL94V-0	2, 3	BRASS	CONTACT AREA: GOLD 0.2μm min. DIP AREA: TIN 2μm min. UNDER PLATING: NICKEL 2.5μm min.
NO.	MATERIAL	FINISH, REMARKS	NO.	MATERIAL	FINISH, REMARKS	
CODE NO. (OLD)	CL		DRAWN	DESIGNED	CHECKED	APPROVED
			<i>A. Sanyal</i>	<i>K. Saji</i>	<i>K. Saji</i>	<i>H. Okawa</i>
			105-06-03	105-06-03	105-06-03	105-06-03
			DRAWING NO.	PART NO.		
			EDC3-082798-21	HIF6A-PA-1.27DSA(71)		
			SCALE	FREE		
			UNITS	ITM		
					CL631	1/1

TO	
PCK	

## X-ON Electronics

Largest Supplier of Electrical and Electronic Components

*Click to view similar products for [Headers & Wire Housings](#) category:*

*Click to view products by [Hirose](#) manufacturer:*

Other Similar products are found below :

[95000-104TRLF](#) [10135584-644402LF](#) [DF62W-EP2022PCA](#) [95000-106TRLF](#) [DF62W-2022SCA](#) [DF62W-EP2022PC](#) [2203348](#) [DF62W-2022SC](#) [1084018](#) [1029039](#) [1084017](#) [802-10-012-10-002000](#) [1112640](#) [1112639](#) [000-34000](#) [0009482033](#) [0009507031](#) [57102-S06-03LF](#) [57202-S52-04LF](#) [PCN6-15S-2.5E](#) [0039019024](#) [58102-G61-06LF](#) [582553-1](#) [0009508121](#) [0022285053](#) [0050291907](#) [018731A](#) [LY20-4P-DT1-P1E-BR](#) [02.125.8002.8](#) [60101931](#) [60598-1 \(Cut Strip\)](#) [M1625-3R/100](#) [61062-3](#) [61082-181009](#) [636-1427](#) [638009-1](#) [641938-9](#) [641991-4](#) [644168-1](#) [644827-2](#) [647662-1](#) [65039-019ELF](#) [65817-002LF](#) [65817-015LF](#) [65863-015LF](#) [66207-023LF](#) [67016-026LF](#) [67046-001LF](#) [67095-007LF](#) [68002-116](#)