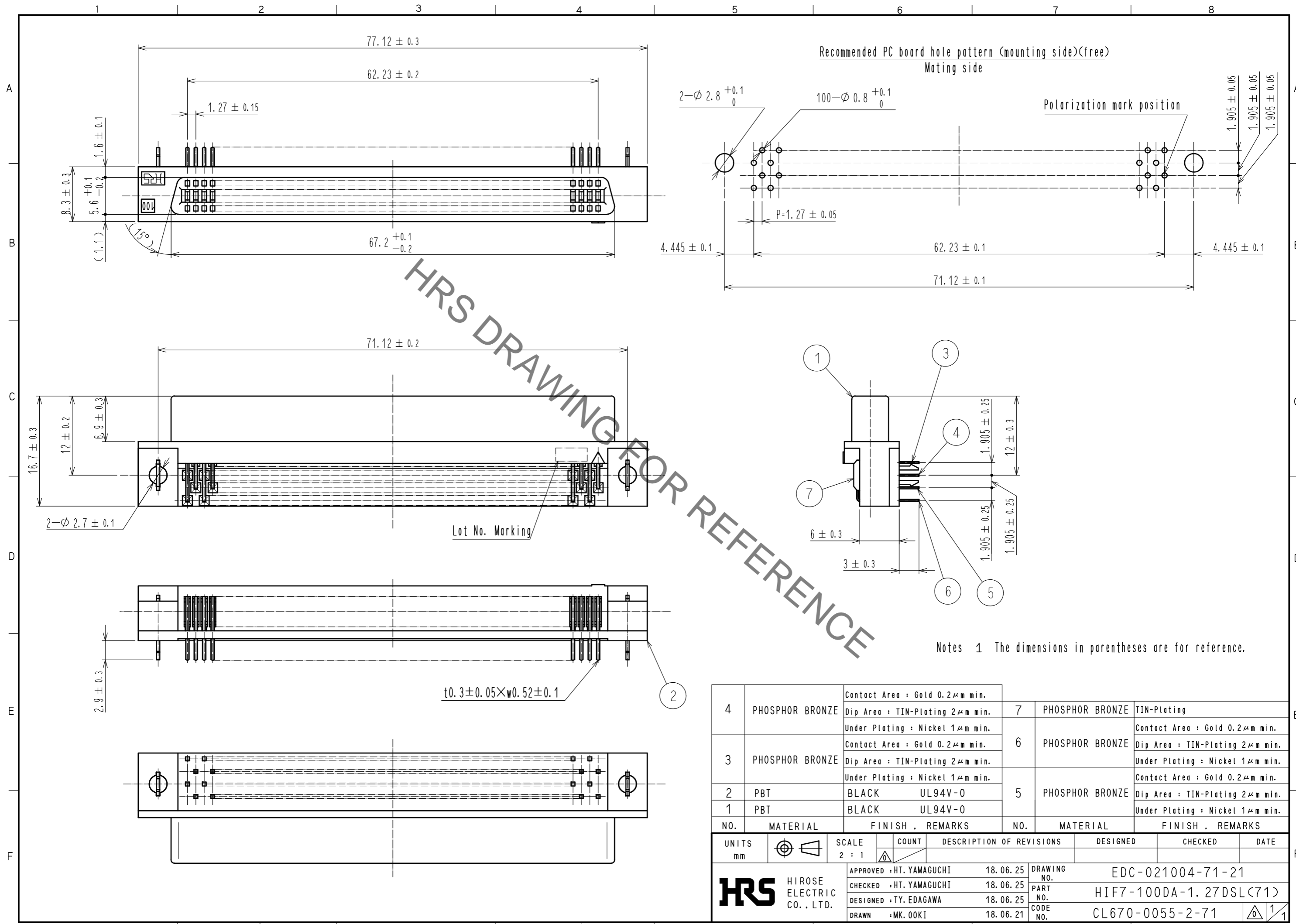


Nov.1.2019 Copyright 2019 HIROSE ELECTRIC CO., LTD. All Rights Reserved.  
In case of consideration for using Automotive equipment / device which demand high reliability, kindly contact our sales window correspondents.



NO.	MATERIAL	FINISH . REMARKS	NO.	MATERIAL	FINISH . REMARKS
4	PHOSPHOR BRONZE	Contact Area : Gold 0.2 $\mu$ m min. Dip Area : TIN-Plating 2 $\mu$ m min. Under Plating : Nickel 1 $\mu$ m min.	7	PHOSPHOR BRONZE	TIN-Plating
3	PHOSPHOR BRONZE	Contact Area : Gold 0.2 $\mu$ m min. Dip Area : TIN-Plating 2 $\mu$ m min. Under Plating : Nickel 1 $\mu$ m min.	6	PHOSPHOR BRONZE	Contact Area : Gold 0.2 $\mu$ m min. Dip Area : TIN-Plating 2 $\mu$ m min. Under Plating : Nickel 1 $\mu$ m min.
2	PBT	BLACK UL94V-0	5	PHOSPHOR BRONZE	Contact Area : Gold 0.2 $\mu$ m min. Dip Area : TIN-Plating 2 $\mu$ m min. Under Plating : Nickel 1 $\mu$ m min.
1	PBT	BLACK UL94V-0			

UNITS	SCALE	COUNT	DESCRIPTION OF REVISIONS	DESIGNED	CHECKED	DATE
mm	2 : 1	△				
APPROVED : HT. YAMAGUCHI			18.06.25	DRAWING NO. EDC-021004-71-21		
CHECKED : HT. YAMAGUCHI			18.06.25	PART NO. HIF7-100DA-1.27DSL(71)		
DESIGNED : TY. EDAGAWA			18.06.25	CODE NO. CL670-0055-2-71		
DRAWN : MK. OOKI			18.06.21	1/1		

## X-ON Electronics

Largest Supplier of Electrical and Electronic Components

*Click to view similar products for [I/O Connectors](#) category:*

*Click to view products by [Hirose](#) manufacturer:*

Other Similar products are found below :

[571763P](#) [58098-0628](#) [72.250.1628.2](#) [72.250.2428.2](#) [74720-0505](#) [76.350.0729.0](#) [76871-1403](#) [FCN-244F080-G/1](#) [FCN-260A9920](#) [MP-5T180MUNNA-005](#) [PCR-E36PM](#) [PCS-XE26MA+](#) [G38A71314B](#) [1571250010](#) [157-22500-3](#) [MS3471L14-19P L/C](#) [192991-0703](#) [172501-4002](#) [172501-6002](#) [FCN-260C008-A/L0](#) [FCN-260C024-AL0](#) [FCN-261Z008](#) [2000314-1](#) [200331-1](#) [PCR-E36FC+](#) [PCS-E28FS+](#) [PCS-XE26SLFD+](#) [PCS-XE26SLFDT+](#) [G730VID08BDC24](#) [HDR-E14MSG1+](#) [U90B2054081210](#) [UE86K842720321](#) [38113800006](#)  
[DP3AR020WQ1R200](#) [Z4.102.0680.0](#) [500-1040](#) [500-1052](#) [500-1054](#) [ZP-4008-66L](#) [0709821002](#) [DX40-20P\(55\)](#) [5554841-1](#) [MS3474W18-8P-LC\\*](#) [SM3106F14S-7S-LC](#) [U90B3054061110](#) [U65-E04-4020](#) [ZPF000000000097891](#) [557-262M2-06C](#) [747360449](#) [10099439-003C-TRLF](#)