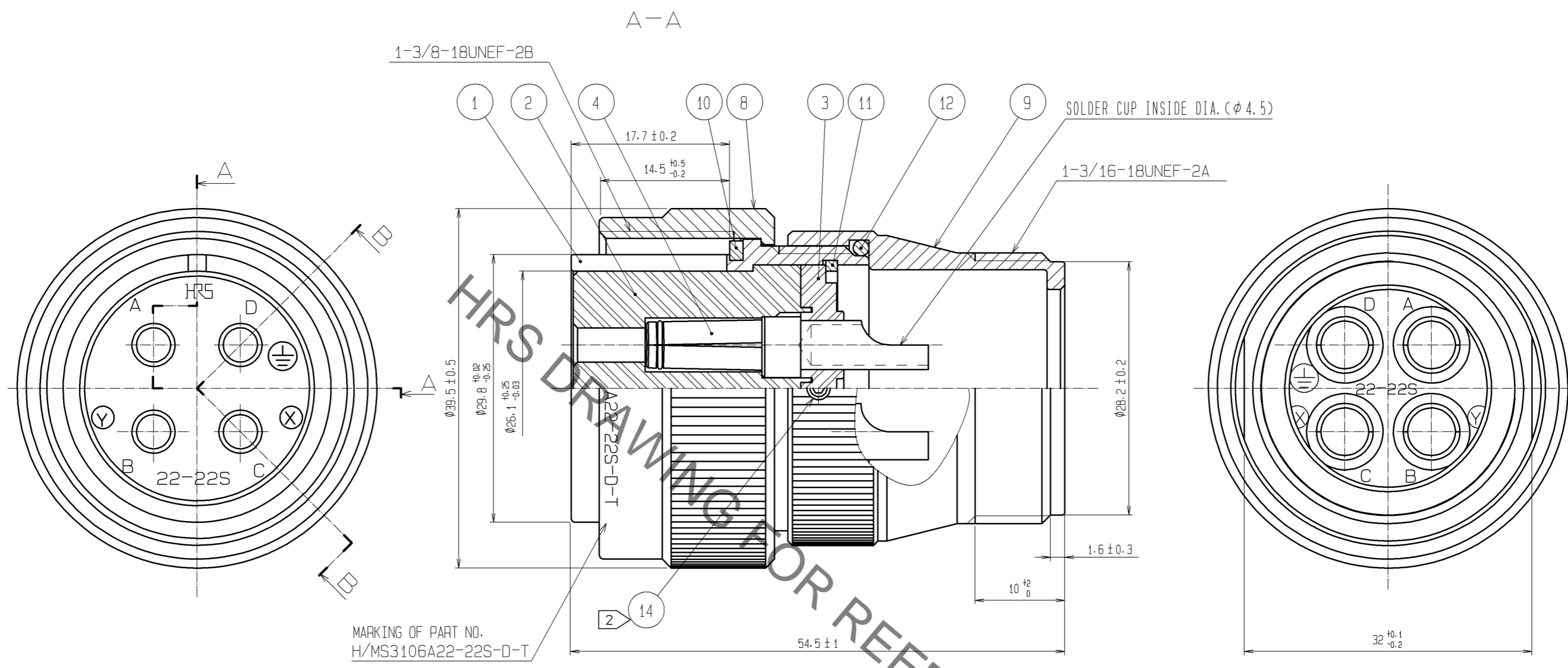


Jun.1.2019 Copyright 2019 HIROSE ELECTRIC CO., LTD. All Rights Reserved.  
 In case of consideration for using Automotive equipment / device which demand high reliability, kindly contact our sales window correspondents.



NOTES  
 1 ROTATION EXAMPLES OF REF. NO. ① AND ⑨ ARE SHOWN.  
 2 REF. No. ⑭ : HEX SOCKET SET SCREW (HEX : 1.27).  
 THE RECOMMENDED TIGHTENING TORQUE : 0.3~0.4 N · m.

NO.	MATERIAL	FINISH . REMARKS	NO.	MATERIAL	FINISH . REMARKS
7	PHOSPHOR BRONZE	SILVER PLATING	14	STAINLESS STEEL	
6	STAINLESS STEEL		13	BRASS	NICKEL PLATING
5	PHOSPHOR BRONZE	SILVER PLATING 4 μm min	12	SILICONE RUBBER	(BLACK)
4	PHOSPHOR BRONZE	SILVER PLATING 4 μm min	11	PHOSPHOR BRONZE	NICKEL PLATING
3	POLYPHENYLENE SULFIDE	(BLACK) UL94V-0	10	SILICONE RUBBER	(BLACK)
2	POLYPHENYLENE SULFIDE	(BLACK) UL94V-0	9	ALUMINUM ALLOY	BLACK CHROMATE TREATMENT(Cr3)
1	ALUMINUM ALLOY	BLACK CHROMATE TREATMENT(Cr3)	8	ALUMINUM ALLOY	BLACK CHROMATE TREATMENT(Cr3)

UNITS	SCALE	COUNT	DESCRIPTION OF REVISIONS	DESIGNED	CHECKED	DATE
mm	2 : 1	△				
APPROVED : EJ. KUNII			13.11.26	DRAWING NO. EDC3-110226-01		
CHECKED : HY. KISHI			13.11.26	PART NO. H/MS3106A22-22S-D-T(73)		
DESIGNED : KN. IKEHARA			13.11.22	CODE NO. CL120-0324-5-73		
DRAWN : KN. IKEHARA			13.11.22	△ 1/1		

## X-ON Electronics

Largest Supplier of Electrical and Electronic Components

*Click to view similar products for [Circular MIL Spec Connector](#) category:*

*Click to view products by [Hirose](#) manufacturer:*

Other Similar products are found below :

[0025-262-542](#) [0025-264-3014](#) [58-570121-04S](#) [0134-202-1200](#) [0134-207-1206](#) [0134-207-1800](#) [0134-207-2207](#) [0134-213-0806](#) [0134-213-1007](#) [0134-213-1009](#) [0134-213-1208](#) [0134-213-1800](#) [0134-213-2209](#) [0025-258-000](#) [015-9516-002](#) [60-042722-19P](#) [0114-201-1278](#) [602GB06EG24-61SN](#) [0134-201-1207](#) [0134-201-1806](#) [0134-201-2006](#) [0134-201-2007](#) [0134-201-2010](#) [0134-202-1400](#) [0134-207-0809](#) [0134-207-1208](#) [0134-207-2009](#) [0134-213-1006](#) [6104-207-2302](#) [6104-208-1902](#) [6131-202-19149P](#) [6131-204-21149P](#) [6131-207-13149P](#) [6131-208-13149P](#) [6131-209-17149P](#) [6131-210-11149P](#) [6131-211-19149P](#) [6131-216-19149P](#) [6131-220-25149P](#) [6131-259-11149P](#) [6131-259-21149P](#) [6131-259-23149P](#) [6131-263-19149P](#) [6131-265-17149P](#) [6131-265-19149P](#) [CS3102A-20-15P](#) [CS3102A-20-15S](#) [CS3102C18-4P-472](#) [CS3106A-20-29P](#) [CS3106A-20-74P](#)