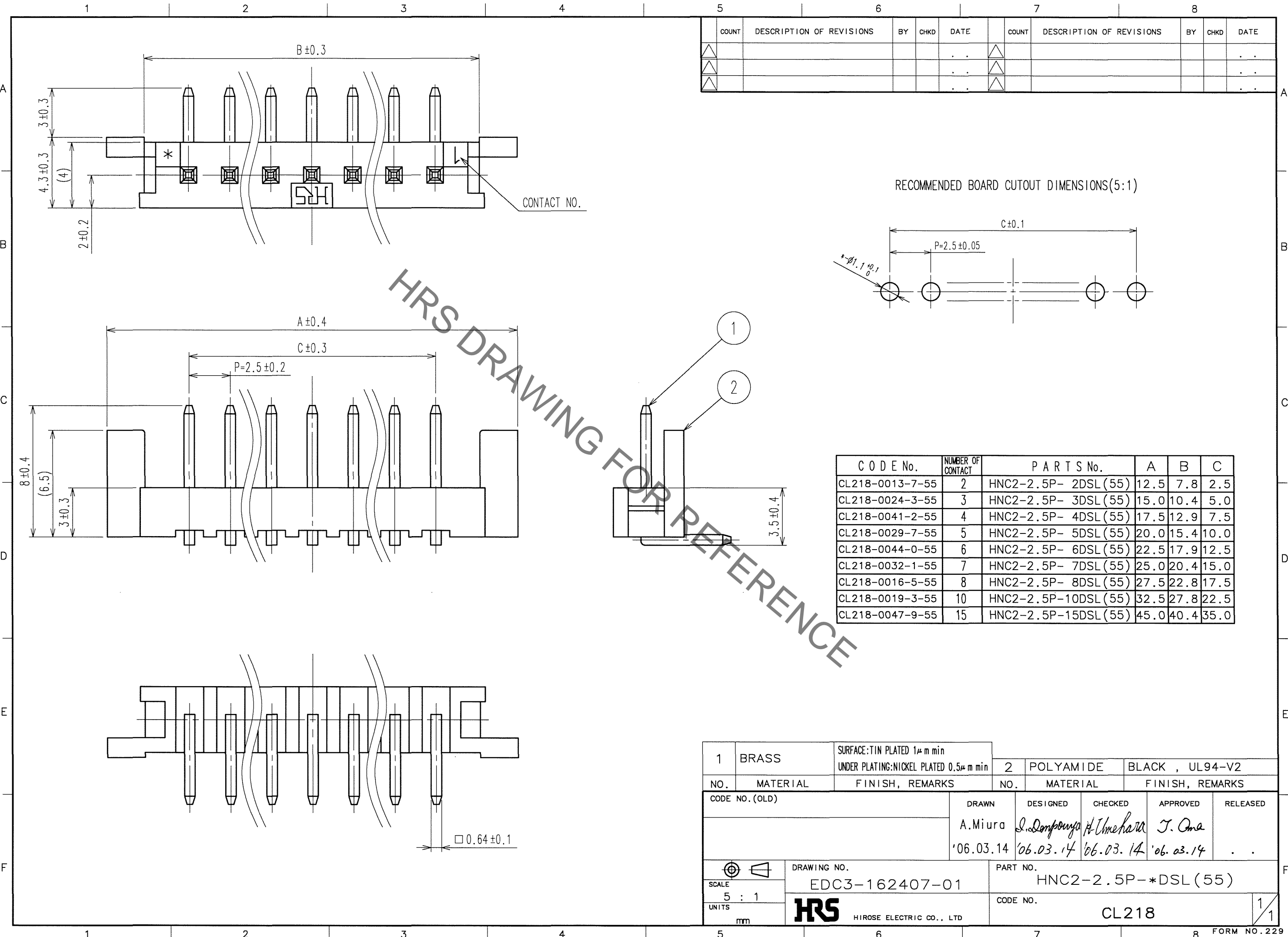
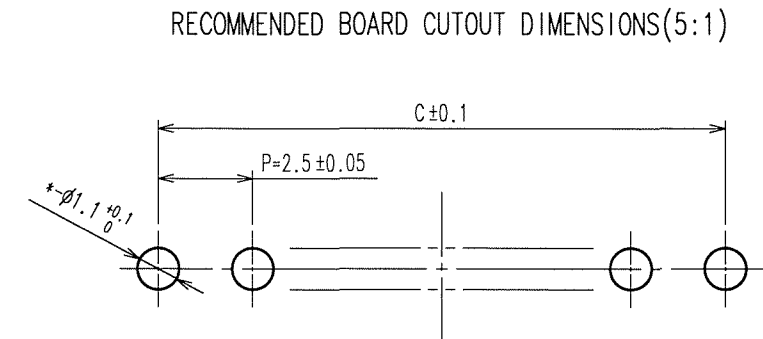


Sep.1.2021 Copyright 2021 HIROSE ELECTRIC CO., LTD. All Rights Reserved.  
In case of consideration for using Automotive equipment / device which demand high reliability, kindly contact our sales window correspondents.



COUNT	DESCRIPTION OF REVISIONS	BY	CHKD	DATE	COUNT	DESCRIPTION OF REVISIONS	BY	CHKD	DATE



C O D E No.	NUMBER OF CONTACT	P A R T S No.	A	B	C
CL218-0013-7-55	2	HNC2-2.5P- 2DSL (55)	12.5	7.8	2.5
CL218-0024-3-55	3	HNC2-2.5P- 3DSL (55)	15.0	10.4	5.0
CL218-0041-2-55	4	HNC2-2.5P- 4DSL (55)	17.5	12.9	7.5
CL218-0029-7-55	5	HNC2-2.5P- 5DSL (55)	20.0	15.4	10.0
CL218-0044-0-55	6	HNC2-2.5P- 6DSL (55)	22.5	17.9	12.5
CL218-0032-1-55	7	HNC2-2.5P- 7DSL (55)	25.0	20.4	15.0
CL218-0016-5-55	8	HNC2-2.5P- 8DSL (55)	27.5	22.8	17.5
CL218-0019-3-55	10	HNC2-2.5P-10DSL (55)	32.5	27.8	22.5
CL218-0047-9-55	15	HNC2-2.5P-15DSL (55)	45.0	40.4	35.0

1	BRASS	SURFACE:TIN PLATED 1μm min UNDER PLATING:NICKEL PLATED 0.5μm min	2	POLYAMIDE	BLACK , UL94-V2	
NO.	MATERIAL	FINISH, REMARKS	NO.	MATERIAL	FINISH, REMARKS	
CODE NO. (OLD)		DRAWN	DESIGNED	CHECKED	APPROVED	RELEASED
		A.Miura	S. Dampouya	H. Umehara	T. Oma	
		'06.03.14	'06.03.14	'06.03.14	'06.03.14	
DRAWING NO. EDC3-162407-01			PART NO. HNC2-2.5P-*DSL (55)			
UNITS mm			CODE NO. CL218			

TO

## X-ON Electronics

Largest Supplier of Electrical and Electronic Components

*Click to view similar products for [Headers & Wire Housings](#) category:*

*Click to view products by [Hirose](#) manufacturer:*

Other Similar products are found below :

[892-18-020-10-001101](#) [58102-G61-06LF](#) [582553-1](#) [0009485154](#) [009176003701906](#) [0050291907](#) [LY20-4P-DT1-P1E-BR](#) [02.125.8002.8](#)  
[609-3404](#) [61062-3](#) [622-0430](#) [622-3653LF](#) [63453-116](#) [636-1030](#) [636-1427](#) [636-3427](#) [636-4007](#) [641938-9](#) [641991-4](#) [644827-2](#) [65817-010LF](#)  
[65817-015LF](#) [65863-015LF](#) [66207-023LF](#) [67095-007LF](#) [67601157](#) [68648-049](#) [70.362.1628.0](#) [70-4210](#) [70-4226B](#) [70-4853B](#) [707-5020](#) [707-5028](#) [71.350.2428.0](#) [71918-208LF](#) [71961-016LF](#) [733-134](#) [733-162](#) [754199-000](#) [760-3052](#) [787-8014-00](#) [79531-3000](#) [FCN-360C032-B](#) [FCN-367T-T012/H](#) [FCN-723D010/2](#) [80.063.4001.1](#) [800-90-001-10-001000](#) [800-90-010-10-002000](#) [801-43-002-10-013000](#) [801-43-006-10-002000](#)