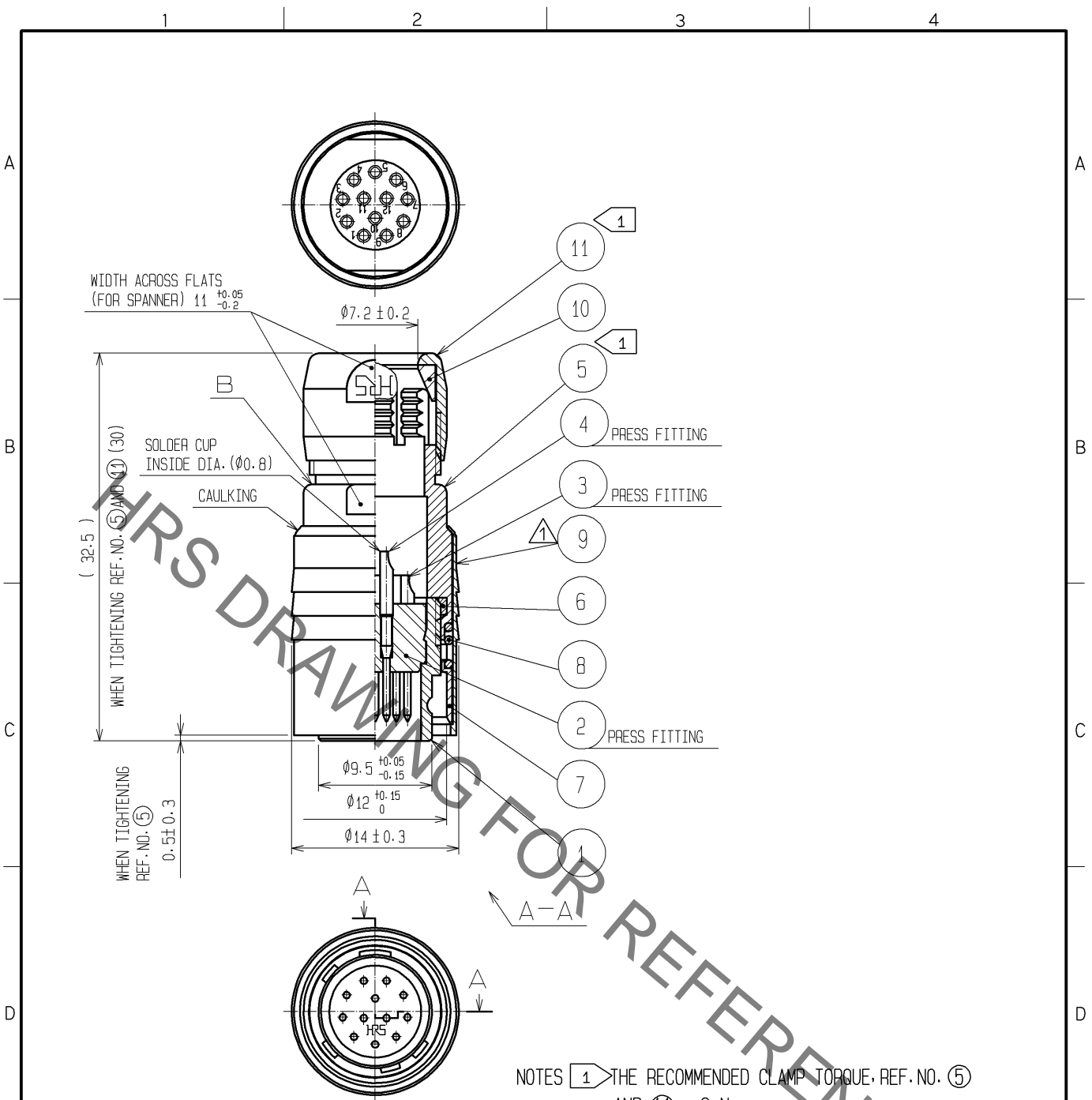


Sep.1.2021 Copyright 2021 HIROSE ELECTRIC CO., LTD. All Rights Reserved.
In case of consideration for using Automotive equipment / device which demand high reliability, kindly contact our sales window correspondents.



NOTES ① THE RECOMMENDED CLAMP TORQUE, REF. NO. ⑤ AND ⑩ : 2 N·m.
REF. NO. ⑩ SHALL BE TIGHTENED BY TORQUE AFTER CLAMPED UNTIL IT TOUCHES THE SURFACE B.
2 ONE EXAMPLE OF THE ROTATION OF REF. NO. ①, ⑤ AND ⑩ ARE SHOWN.

6	POLYAMIDE				
5	BRASS	MATTE FINISH NICKEL PLATED	11	BRASS	MATTE FINISH NICKEL PLATED
4	BRASS	GOLD PLATING 0.2µm min. NICKEL UNDER PLATING 2µm min.	10	POLYAMIDE	
3	BRASS		9	BRASS	MATTE FINISH NICKEL PLATED
2	POLYAMIDE	(BLUE)	8	STEEL	NICKEL PLATING
1	ZINC ALLOY	MATTE FINISH NICKEL PLATED	7	STAINLESS STEEL	
NO.	MATERIAL	FINISH , REMARKS	NO.	MATERIAL	FINISH , REMARKS

UNITS mm		SCALE 2 : 1	COUNT 1	DESCRIPTION OF REVISIONS DIS-C-002608	DESIGNED TP. KOMATSU	CHECKED EJ. KUNII	DATE 12.05.29
HIROSE ELECTRIC CO., LTD. APPROVED : MO. SATOH 05.10.24 CHECKED : EJ. KUNII 05.10.21 DESIGNED : DS. MATSUNE 05.10.19 DRAWN : DS. MATSUNE 05.10.19				DRAWING NO. EDC4-007760-73 PART NO. HR10-10P-12P(73) CODE NO. CL110-0025-7-73			

X-ON Electronics

Largest Supplier of Electrical and Electronic Components

Click to view similar products for [Circular Push Pull Connectors](#) category:

Click to view products by [Hirose](#) manufacturer:

Other Similar products are found below :

[Hirose](#)