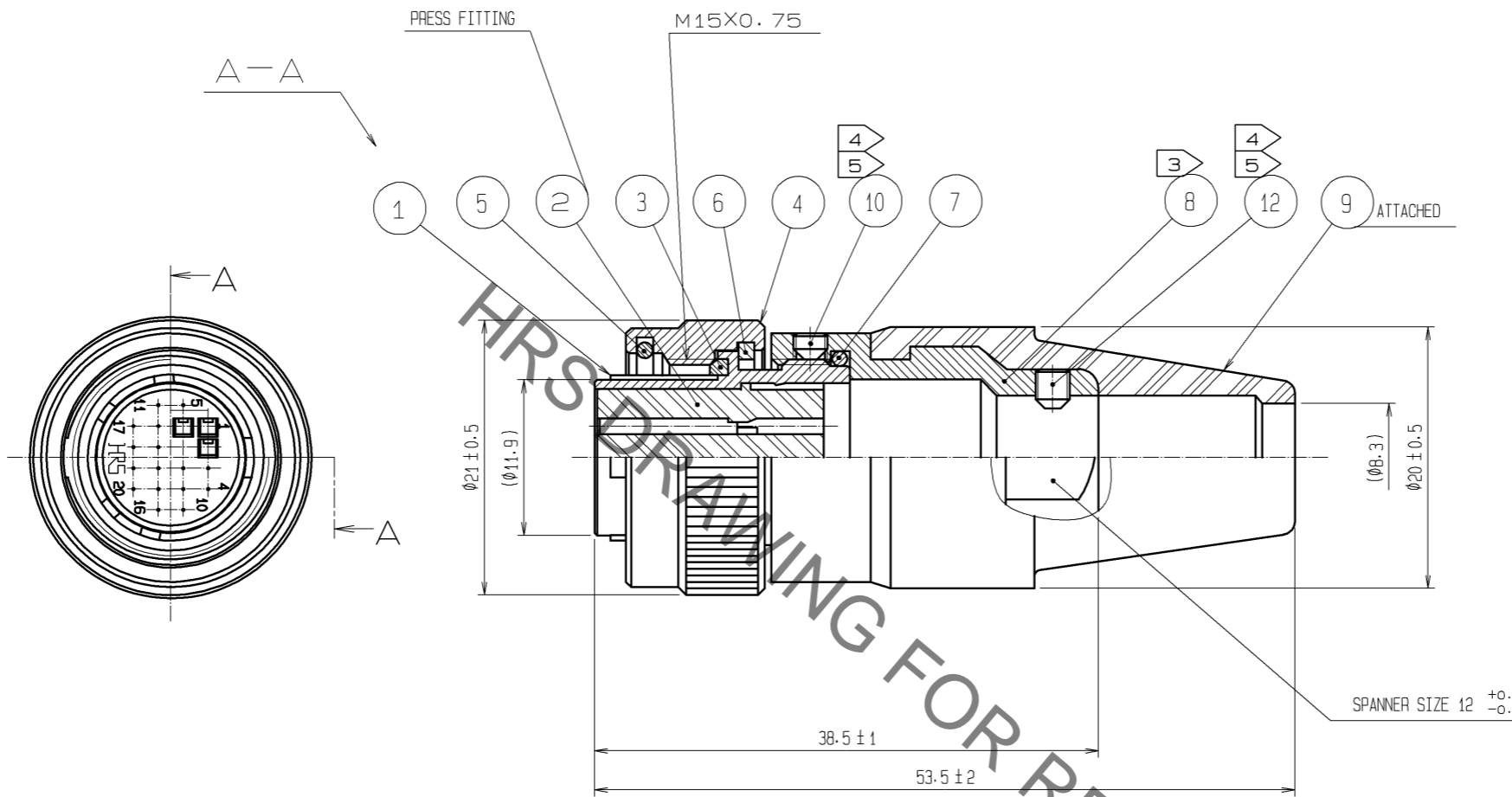


Aug.1.2021 Copyright 2021 HIROSE ELECTRIC CO., LTD. All Rights Reserved. In case of consideration for using Automotive equipment / device which demand high reliability, kindly contact our sales window correspondents.



NOTES 1 Applicable contact

	Loose contact type	Chain contact type
Applicable terminal	HR22-SC-122 (CL122-0016-6)	HR22-SC-222 (CL122-0008-8)
Applicable wire	Size AWG #24 TO 28	
	Insulation diameter Ø1.15 max	
Crimping tool	HR22-TA2428HC	Automatic crimping machine body :CM-105 Applicator:AP105-HR22-2
Extractor	RP6-SC-TP	

- ② CABLE CRIMPING TOOL OF REF.NO. ①:HR10A-TC-04
- ③ THE RECOMMENDED CLAMP TORQUE OF REF.NO. ②: 2 TO 2.5N·m
- ④ ACROSS FLATS OF HEXAGON SOCKET OF REF.NO. ② AND ③: 1.27
THE RECOMMENDED CLAMP TORQUE OF REF.NO. ② AND ③: 0.3 TO 0.4 N·m
- ⑤ THREAD LOCKER IS RECOMMENDED TO PREVENT REF.NO. ② AND ③ FROM LOOSENING.
RECOMMENDED THREAD LOCKER: LOCKTITE 263, HENKEL JAPAN LTD.
- ⑥ THE CABLE PULL AND TWISTING STRENGTH AND OTHER CHARACTERISTICS MAY DIFFER,
DEPENDING ON THE CABLE STRUCTURE.
PLEASE CONFIRM BEFORE THE USE.

6	PHOSPHOR BRONZE	NICKEL PLATING	12	STEEL	NICKEL PLATING M2.6X0.45X3		
5	STEEL	NICKEL PLATING	11	BRASS			
4	BRASS	NICKEL PLATING	10	STEEL	NICKEL PLATING M2.6X0.45X2		
3	SILICONE RUBBER	(BLACK)	9	ACRYLONITRILE BUTADIENE RUBBER	(BLACK)		
2	PBT	(BLACK) UL94V-0	8	BRASS	NICKEL PLATING		
1	ZINC ALLOY	NICKEL PLATING	7	SILICONE RUBBER	(BLACK)		
NO.	MATERIAL	FINISH . REMARKS	NO.	MATERIAL	FINISH . REMARKS		
UNITS mm		SCALE 2 : 1	COUNT	DESCRIPTION OF REVISIONS	DESIGNED	CHECKED	DATE
HIROSE ELECTRIC CO., LTD.		APPROVED : SU. OBARA	14.03.06	DRAWING NO. EDC3-113281-73			
		CHECKED : HY. KISHI	14.03.06	PART NO. HR22-12TPQ-20SC(73)			
		DESIGNED : MM. ISHII	14.03.06	CODE NO. CL122-0053-2-73			
		DRAWN : MM. ISHII	14.03.06				

X-ON Electronics

Largest Supplier of Electrical and Electronic Components

Click to view similar products for [Standard Circular Connector](#) category:

Click to view products by [Hirose](#) manufacturer:

Other Similar products are found below :

[5M2530B10P](#) [600259N006](#) [600273N007](#) [6134-336-13149](#) [6134-337-11149](#) [6134-337-2390](#) [6134-341-17149](#) [6280-4SG-516](#) [6280-7SG-3DC](#)
[6290](#) [6291A](#) [66200A-10](#) [680-SMG](#) [681-PMG](#) [CXS3102A14S2P](#) [CXS3102A181S](#) [7251-6SG-300](#) [7271-6SG-300](#) [7282-3PG-300-CH3](#) [75-](#)
[474014-05S](#) [75-474618-01S](#) [75-474618-04P](#) [75-474618-04S](#) [799539-000](#) [MI8-SE](#) [805-005-07NF11-19PC](#) [805-005-07NF15-7PA](#) [8280-4PG-](#)
[516](#) [8280-7PG-519](#) [8282-5PG-519](#) [836783-1](#) [MP-4102-25P-C](#) [862256-1](#) [864019-2](#) [866857-1](#) [867865-1](#) [PT01SP-14-18P](#) [PT08P-14-5S](#) [120-](#)
[1833-000](#) [QCM019PC2DC012B](#) [1-2069279-1](#) [121583-0217](#) [121667-0020](#) [129591AU](#) [1000B BULK](#) [RD10A16-19-P6CS051/1](#) [RD10A20-31-](#)
[P8CS051/1](#) [RD16A14-12-S6CS051/2](#) [1301240290](#) [1301240347](#) [1301860202](#)