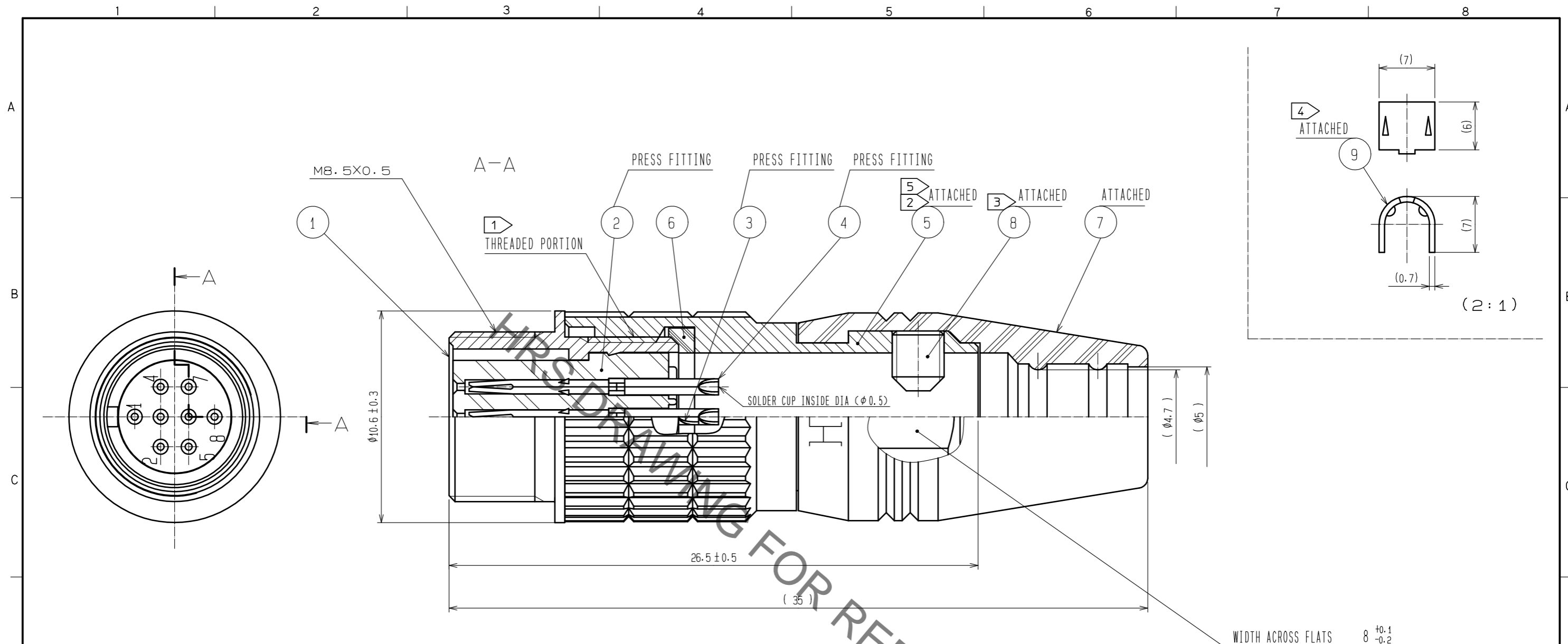


Sep.1.2021 Copyright 2021 HIROSE ELECTRIC CO., LTD. All Rights Reserved.
In case of consideration for using Automotive equipment / device which demand high reliability, kindly contact our sales window correspondents.



- NOTES
- ① THREAD PORTION OF REF. No. ① AND ⑤ IS APPLIED WITH PRECOATING TO PREVENT LOOSENESS. HOWEVER, THE ADHESIVE EFFECTIVENESS IS DECREASED WHEN REUSED. THEREFORE, THREAD PORTION IS RECOMMENDED TO COAT WITH LOCTITE 263 MANUFACTURED BY HENKEL JAPAN OR EQUIVALENT.
 - ② THE RECOMMENDED TIGHTENING TORQUE OF REF. No. ⑤ TO BE 1N · m.
 - ③ THE TIP OF REF. No. ⑧ SHALL BE FIXED TO THE CONCAVE PORTION WITH REF. No. ⑨ CLAMPED TO THE CABLE. OPPOSITE SIDE DIMENSION OF A HEXAGON SOCKET OF REF. No. ⑧ IS 1.27mm. AND THE RECOMMENDED TIGHTENING TORQUE OF REF. No. ⑧ TO BE 0.3 TO 0.4 N · m.
 - ④ MANUAL CRIMPING TOOL OF REF. No. ⑨ : HR10A-TC-02(CL150-0041-2)(THE HOLE DIAMETER FOR CRIMPING: φ 5.3)
 - ⑤ REF. No. ⑥ IS INCLUDED IN REF. No. ⑤.
 - ⑥ ONE EXAMPLE OF THE ROTATION OF REF. No. ⑤ TO REF. No. ① IS SHOWN.
 - ⑦ OVER PLATING : GOLD 0.2 μm min.
TERMINAL AREA : GOLD FLASH
UNDER PLATING : NICKEL 2 μm min.
 - ⑧ THE CABLE PULL AND TWISTING STRENGTH AND OTHER CHARACTERISTICS MAY DIFFER, DEPENDING ON THE CABLE STRUCTURE. PLEASE CONFIRM BEFORE THE USE.

NO.	MATERIAL	FINISH . REMARKS	NO.	MATERIAL	FINISH . REMARKS
5	BRASS	NICKEL PLATING			
4	PHOSPHOR BRONZE	⑦	9	BRASS	
3	PHOSPHOR BRONZE	⑦	8	STEEL	NICKEL PLATING JIS B 1177 HEXAGON SOCKET SCREW M2.6X0.45X3
2	POLYPHENYLENE SULFIDE	(BLACK) UL94V-0	7	ETHYLENE PROPYLENE RUBBER	(BLACK)
1	ZINC ALLOY	MATTE FINISH NICKEL PLATED	6	ETHYLENE PROPYLENE RUBBER	(BLACK)

UNITS	SCALE	COUNT	DESCRIPTION OF REVISIONS	DESIGNED	CHECKED	DATE
mm	5 : 1	△				
			APPROVED : E.J. KUNII	15.10.14	DRAWING NO. EDC-048751-72-00	
			CHECKED : E.J. KUNII	15.10.14	PART NO. HR25-7TJ-8S(72)	
			DESIGNED : MM. ISHII	15.10.14	CODE NO. CL125-0017-8-72	
			DRAWN : MM. ISHII	15.10.14	1/1	

X-ON Electronics

Largest Supplier of Electrical and Electronic Components

Click to view similar products for [Standard Circular Connector](#) category:

Click to view products by [Hirose](#) manufacturer:

Other Similar products are found below :

[5M2530B10P](#) [600259N006](#) [600273N007](#) [6134-336-13149](#) [6134-337-11149](#) [6134-337-2390](#) [6134-341-17149](#) [6280-4SG-516](#) [6280-7SG-3DC](#)
[6290](#) [6291A](#) [66200A-10](#) [680-SMG](#) [681-PMG](#) [CXS3102A14S2P](#) [CXS3102A181S](#) [7251-6SG-300](#) [7271-6SG-300](#) [7282-3PG-300-CH3](#) [75-](#)
[474014-05S](#) [75-474618-01S](#) [75-474618-04S](#) [799539-000](#) [MI8-SE](#) [805-005-07NF11-19PC](#) [805-005-07NF15-7PA](#) [8280-4PG-516](#) [8280-7PG-](#)
[519](#) [8282-5PG-519](#) [836783-1](#) [MP-4102-25P-C](#) [862256-1](#) [864019-2](#) [866857-1](#) [867865-1](#) [PT01SP-14-18P](#) [PT08P-14-5S](#) [PTSF06SE-14-12S](#)
[120-1833-000](#) [QCM019PC2DC012B](#) [1-2069279-1](#) [121583-0217](#) [121667-0020](#) [129591AU](#) [1000B BULK](#) [RD10A16-19-P6CS051/1](#)
[RD10A20-31-P8CS051/1](#) [RD16A14-12-S6CS051/2](#) [1301240290](#) [1301240347](#) [1301860202](#)