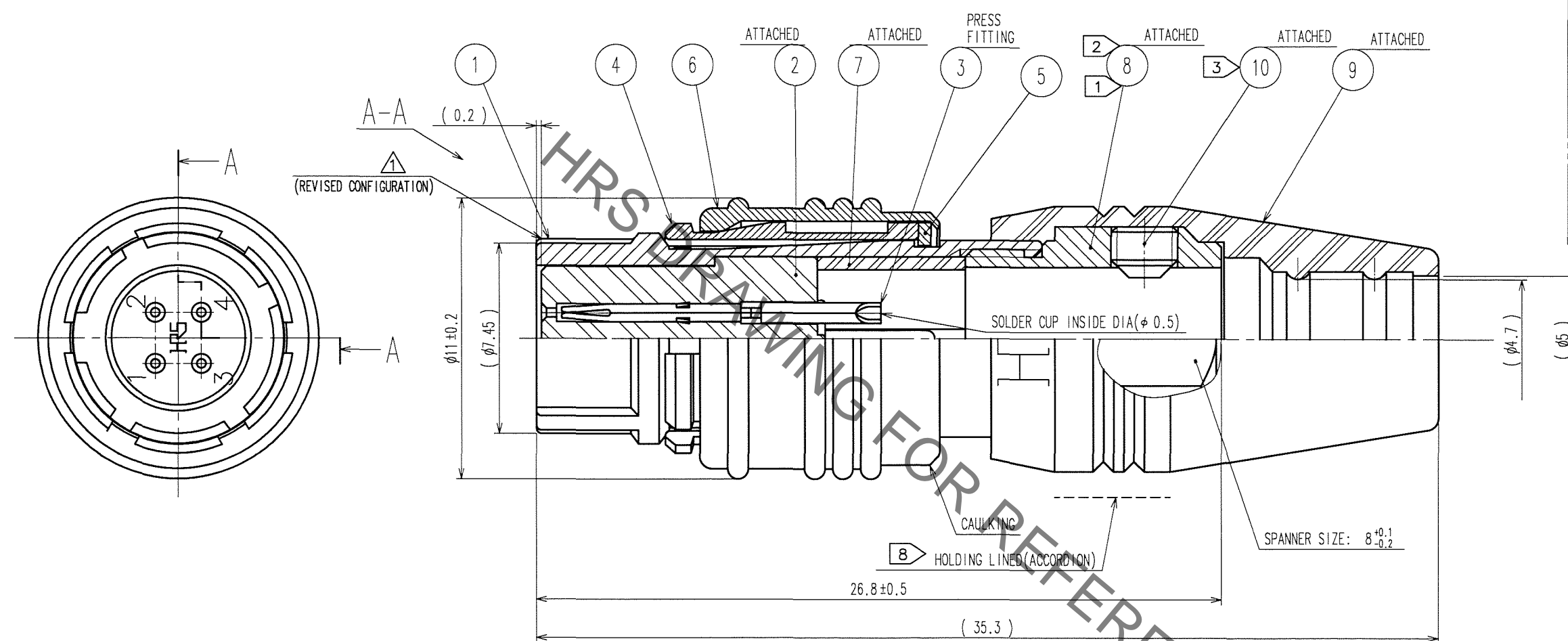
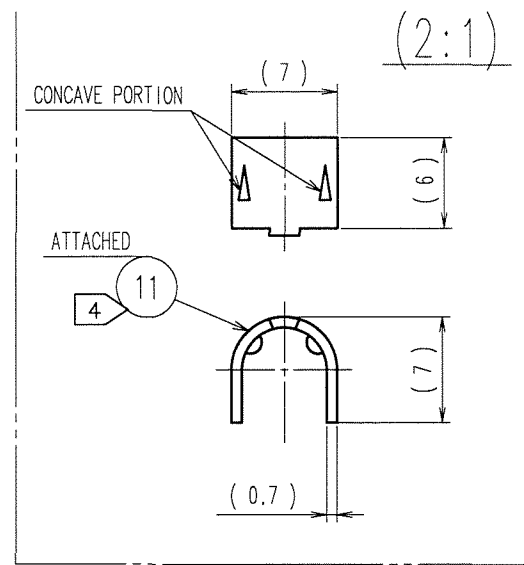


Sep.1.2021 Copyright 2021 HIROSE ELECTRIC CO., LTD. All Rights Reserved.
In case of consideration for using Automotive equipment / device which demand high reliability, kindly contact our sales window correspondents.

| COUNT | DESCRIPTION OF REVISIONS | BY | CHKD | DATE | COUNT | DESCRIPTION OF REVISIONS | BY | CHKD | DATE |
|-------|--------------------------|-----|------|----------|-------|--------------------------|----|------|------|
| 1 | DIS-C-000627 | T.K | E.K | 07.05.30 | | | | | |
| | | | | | | | | | |
| | | | | | | | | | |



- NOTES
- 1) THREAD PORTION OF REF. No. ⑧ IS APPLIED WITH PRECOATING TO PREVENT LOOSENESS. HOWEVER, THE ADHESIVE EFFECTIVENESS IS DECREASED WHEN REUSED. THEREFORE, THREAD PORTION IS RECOMMENDED TO COAT WITH LOCTITE 271 MANUFACTURED BY HENKEL JAPAN OR EQUIVALENT.
 - 2) THE RECOMMENDED TIGHTENING TORQUE OF REF. No. ⑧ TO BE 1 N·m.
 - 3) THE TIP OF REF. No. ⑩ SHALL BE FIXED TO THE CONCAVE PORTION WITH REF. No. ⑪ CLAMPED TO THE CABLE. OPPOSITE SIDE DIMENSION OF A HEXAGON SOCKET OF REF. No. ⑩ IS 1.27mm. AND THE RECOMMENDED TIGHTENING TORQUE OF REF. No. ⑩ TO 0.3 TO 0.4 N·m.
 - 4) MANUAL CRIMPING TOOL OF REF. No. ⑪ : HR10A-TC-02 (THE HOLE DIAMETER FOR CRIMPING: φ 5.3)
 - 5) ROTATION EXAMPLES OF REF. No. ① AND ⑧, ⑨ ARE SHOWN.
 - 6) CONTACT AREA : GOLD 0.2 μm min.
TERMINAL AREA: GOLD FLASH.
UNDERPLATING : NICKEL 2 μm min.
 - 7) REFER TO THE TECHNICAL SPECIFICATION ATAD-C0140 FOR ASSEMBLY PROCEDURE.
 - 8) FOR SECURE CLICK SENSATION WHEN MATING, DO NOT HOLD REF. No. ⑥.
THIS PRODUCT SHALL BE MATED WITH HOLDING LINED (ACCORDION) AREA OF REF. No. ⑨.
INSERT THE PLUG UNTIL IT CLICKS.
FOR THE WITHDRAWAL, PULL THE CONNECTOR BY HOLDING REF. No. ⑥.
 - 9) THE CABLE PULL AND TWISTING STRENGTH AND OTHER CHARACTERISTICS MAY DIFFER, DEPENDING ON THE CABLE STRUCTURE. PLEASE CONFIRM BEFORE THE USE.

| 6 | BRASS | MATTE FINISH NICKEL PLATING | | | |
|-----|-----------------------|-----------------------------|-----|---------------------------|----------------------------|
| 5 | BRASS | NICKEL PLATING | 11 | BRASS | |
| 4 | PHOSPHOR BRONZE | NICKEL PLATING | 10 | STEEL | NICKEL PLATING M2.6x0.45x2 |
| 3 | PHOSPHOR BRONZE | ⑥ | 9 | ETHYLENE PROPYLENE RUBBER | (BLACK) |
| 2 | POLYPHENYLENE SULFIDE | (BLACK) UL94V-0 | 8 | BRASS | NICKEL PLATING |
| 1 | ZINC ALLOY | MATTE FINISH NICKEL PLATING | 7 | POLYACETAL | (NATURAL) |
| NO. | MATERIAL | FINISH, REMARKS | NO. | MATERIAL | FINISH, REMARKS |

| | | | | | | |
|----------------------------|--|------------------------------|-----------------------------------|------------------------------|---------------------------------|---------------|
| CODE NO. (OLD) CL | | DRAWN M.SATO '06 09 28 | DESIGNED Y.YAMADA '06 09 28 | CHECKED / | APPROVED M.SATO '06 09 29 | RELEASED / |
| DRAWING NO. EDC3-115055 | | PART NO. HR25A-7P-4S | | CODE NO. CL125-0613-4-00 | | |
| SCALE 5 : 1 | | UNITS mm | | HRS HIROSE ELECTRIC CO., LTD | | |

TO
R

X-ON Electronics

Largest Supplier of Electrical and Electronic Components

Click to view similar products for [Circular Push Pull Connectors](#) category:

Click to view products by [Hirose](#) manufacturer:

Other Similar products are found below :

[6407-249V-11273P](#) [6408-201V-13273](#) [6408-202V-13343](#) [6408-202V-17343](#) [EZG.0B.309.CLN](#) [FFA.2S.310.ZLA](#) [FGA.1B.307.CYCD72Z](#)
[FGJ.1B.304.CLLD76](#) [FGJ.1B.306.CWLD72](#) [FGJ.3B.304.CYMD10Z](#) [FGJ.3B.304.CYMD82Z](#) [PCS.01.250.DLLE24](#) [PHG.0K.305.CYMC40Z](#)
[PHG.1K.308.CLLK85](#) [PKG.M0.6BL.LZ](#) [PLC.M1.0SL.LA](#) [GMA.10.290.DN](#) [GMA.3B.090.DA](#) [PRG.M0.6GL.LC52GZ](#) [PSA.1S.275.CTLC66](#)
[ABF.1S.250.NTA](#) [133020F](#) [1331ER193MZ](#) [1332M107MZ](#) [DTS26Z19-32JA-LC](#) [DTS26Z19-32SA](#) [DTS26Z19-32SA-LC](#) [DTS26Z23-55HA](#)
[DTS26Z23-55HA-LC](#) [DTS26Z23-55JA-LC](#) [EAJ.1B.306.CWA](#) [ECG.XB.312.CLL](#) [1589430-2](#) [EEA.0B.305.CLN](#) [EEA.0B.309.CLL](#)
[ELF.00.250.NTL](#) [ERA.01.250.DLL](#) [BRD.0B.200.PCSG](#) [BRR.2S.200.PZVG](#) [HR10A-P](#) [CAH.M34.SLL.C72GZ](#) [CAJ.M34.SLL.C72GZ](#)
[300500](#) [ESB.00.303.NLL](#) [EXG.0B.309.HLN](#) [FFB.1S.250.CLAC27](#) [FGA.2B.306.CYCD92](#) [FGA.2B.306.CYCD92Z](#) [FGA.XB.312.CLAD72](#)
[FGJ.1B.302.CYMD62](#)