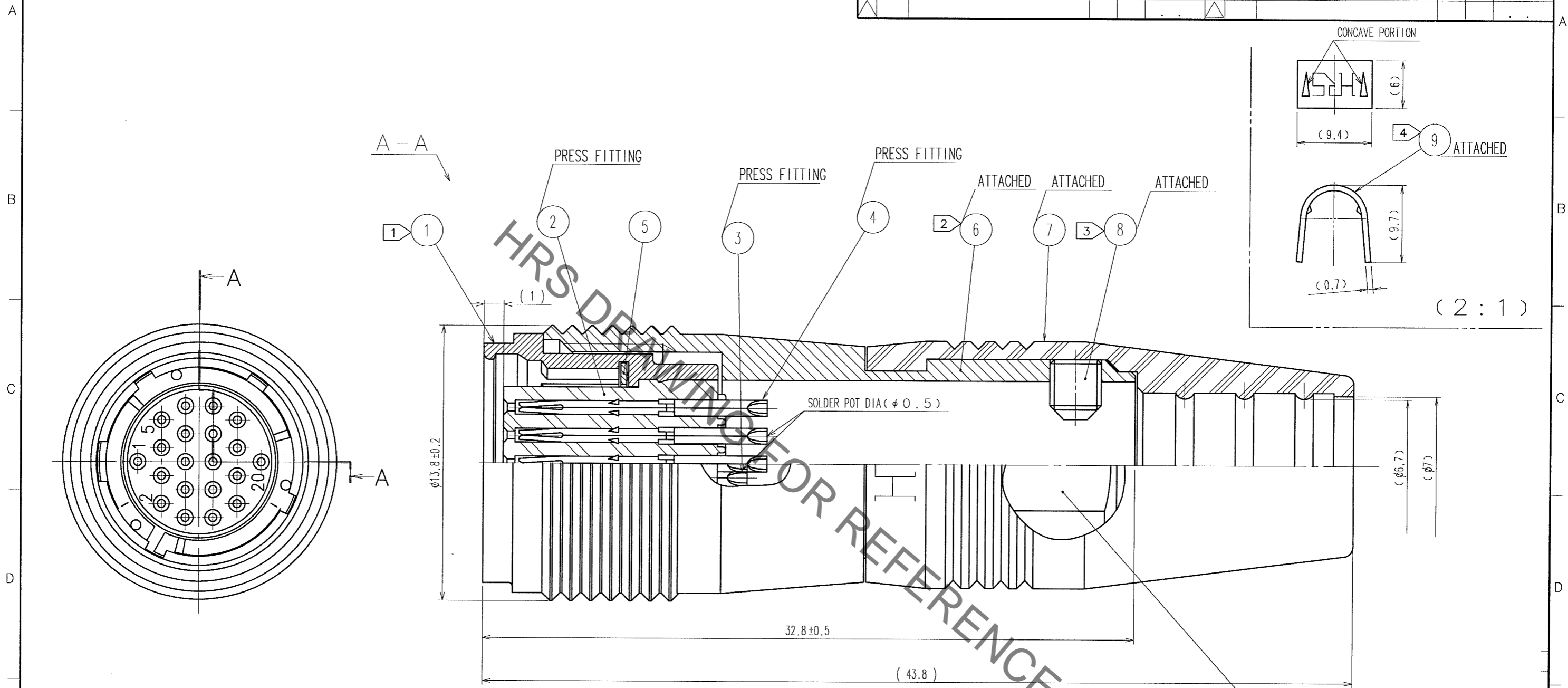


Sep.1.2021 Copyright 2021 HIROSE ELECTRIC CO., LTD. All Rights Reserved.  
In case of consideration for using Automotive equipment / device which demand high reliability, kindly contact our sales window correspondents.

COUNT	DESCRIPTION OF REVISIONS	BY	CHKD	DATE	COUNT	DESCRIPTION OF REVISIONS	BY	CHKD	DATE
△				..	△				..
△				..	△				..
△				..	△				..



- NOTES
- ① THREAD PORTION OF REF. No. ① IS APPLIED WITH PRECOATING TO PREVENT LOOSENESS. HOWEVER, THE ADHESIVE EFFECTIVENESS IS DECREASED WHEN REUSED. THEREFORE, THREAD PORTION IS RECOMMENDED TO COAT WITH LOCTITE 271 MANUFACTURED BY HENKEL JAPAN OR EQUIVALENT.
  - ② THE RECOMMENDED TIGHTENING TORQUE OF REF. No. ⑥ TO BE 1.5 N·m.
  - ③ THE TIP OF REF. No. ⑧ SHALL BE FIXED TO THE CONCAVE PORTION WITH REF. No. ⑨ CLAMPED TO THE CABLE.  
OPPOSITE SIDE DIMENSION OF A HEXAGON SOCKET OF REF. No. ⑧ IS 1.27mm.  
AND THE RECOMMENDED TIGHTENING TORQUE OF REF. No. ⑧ TO BE 0.3 TO 0.4 N·m.
  - ④ MANUAL CRIMPING TOOL OF REF. No. ⑨ : HR10A-TC-02 (THE HOLE DIAMETER FOR CRIMPING: φ 7)
  - ⑤ ROTATION EXAMPLES OF REF. No. ① AND ⑥ ⑦ ARE SHOWN.
  - ⑥ CONTACT AREA : GOLD 0.2μ m min.  
TERMINAL AREA: GOLD FLASH.  
UNDERPLATING : NICKEL 2μ m min.
  - ⑦ REFER TO THE TECHNICAL SPECIFICATION ATAD-C0140 FOR ASSEMBLY PROCEDURE.
  - ⑧ THE CABLE PULL AND TWISTING STRENGTH AND OTHER CHARACTERISTICS MAY DIFFER, DEPENDING ON THE CABLE STRUCTURE. PLEASE CONFIRM BEFORE THE USE.

5	BERYLLUM COPPER	NICKEL PLATING			
4	PHOSPHOR BRONZE	⑥	9	BRASS	
3	PHOSPHOR BRONZE	⑥	8	STEEL	
2	POLYPHENYLENE SULFIDE	(BLACK) 94V-0	7	ETHYLENE PROPYLENE RUBBER (BLACK)	
1	ZINC ALLOY	MATTE FINISH NICKEL PLATING	6	BRASS	
				MATTE FINISH NICKEL PLATING	
NO.	MATERIAL	FINISH, REMARKS	NO.	MATERIAL	FINISH, REMARKS

CODE NO. (OLD) CL	DRAWN <i>M. Sato</i> 06.09.28	DESIGNED <i>Y. Yamadori</i> 06.09.28	CHECKED /	APPROVED <i>M. Sato</i> 06.09.29	RELEASED ..
DRAWING NO. EDC3-115066		PART NO. HR25A-9J-20S			
SCALE 5 : 1		CODE NO. CL125-0624-0-00		1/1	
UNITS mm		HRS HIROSE ELECTRIC CO., LTD			

## X-ON Electronics

Largest Supplier of Electrical and Electronic Components

*Click to view similar products for [Circular Push Pull Connectors](#) category:*

*Click to view products by [Hirose](#) manufacturer:*

Other Similar products are found below :

[6407-249V-11273P](#) [6408-201V-13273](#) [6408-202V-13343](#) [6408-202V-17343](#) [EZG.0B.309.CLN](#) [FFA.2S.310.ZLA](#) [FGA.1B.307.CYCD72Z](#)  
[FGJ.1B.304.CLLD76](#) [FGJ.1B.306.CWLD72](#) [FGJ.3B.304.CYMD10Z](#) [FGJ.3B.304.CYMD82Z](#) [PCS.01.250.DLLE24](#) [PHG.0K.305.CYMC40Z](#)  
[PHG.1K.308.CLLK85](#) [PKG.M0.6BL.LZ](#) [PLC.M1.0SL.LA](#) [GMA.10.290.DN](#) [GMA.3B.090.DA](#) [PRG.M0.6GL.LC52GZ](#) [PSA.1S.275.CTLC66](#)  
[ABF.1S.250.NTA](#) [133020F](#) [1331ER193MZ](#) [1332M107MZ](#) [DTS26Z19-32JA-LC](#) [DTS26Z19-32SA](#) [DTS26Z19-32SA-LC](#) [DTS26Z23-55HA](#)  
[DTS26Z23-55HA-LC](#) [DTS26Z23-55JA-LC](#) [EAJ.1B.306.CWA](#) [ECG.XB.312.CLL](#) [1589430-2](#) [EEA.0B.305.CLN](#) [EEA.0B.309.CLL](#)  
[ELF.00.250.NTL](#) [ERA.01.250.DLL](#) [BRD.0B.200.PCSG](#) [BRR.2S.200.PZVG](#) [HR10A-P](#) [CAH.M34.SLL.C72GZ](#) [CAJ.M34.SLL.C72GZ](#)  
[300500](#) [ESB.00.303.NLL](#) [EXG.0B.309.HLN](#) [FFB.1S.250.CLAC27](#) [FGA.2B.306.CYCD92](#) [FGA.2B.306.CYCD92Z](#) [FGA.XB.312.CLAD72](#)  
[FGJ.1B.302.CYMD62](#)