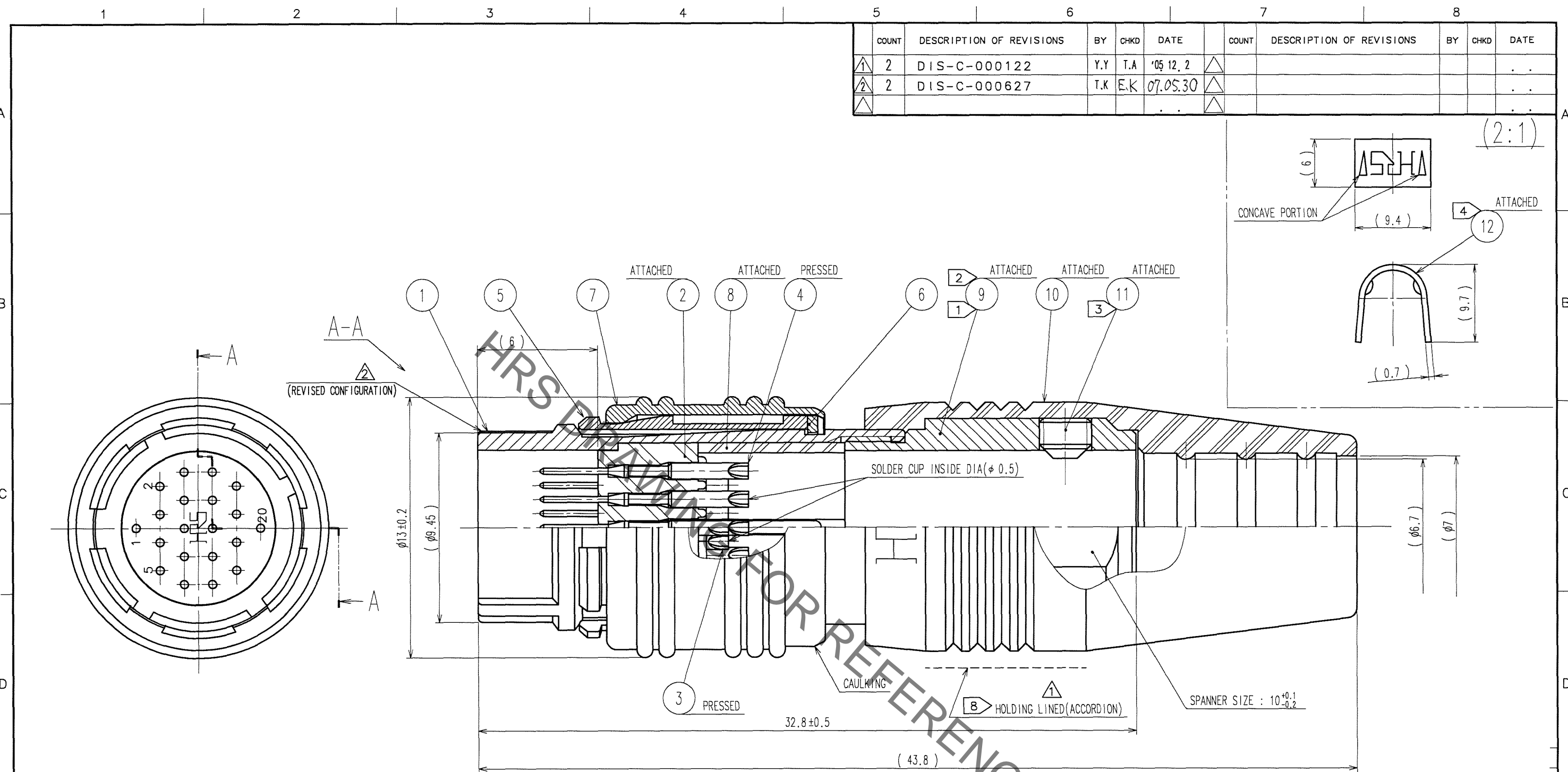


Aug.1.2021 Copyright 2021 HIROSE ELECTRIC CO., LTD. All Rights Reserved.
In case of consideration for using Automotive equipment / device which demand high reliability, kindly contact our sales window correspondents.



COUNT	DESCRIPTION OF REVISIONS	BY	CHKD	DATE	COUNT	DESCRIPTION OF REVISIONS	BY	CHKD	DATE
2	DIS-C-000122	Y.Y	T.A	'05.12.2					
2	DIS-C-000627	T.K	E.K	07.05.30					

- NOTES
- ① THREAD PORTION OF REF. No. ⑨ IS APPLIED WITH PRECOATING TO PREVENT LOOSENESS. HOWEVER, THE ADHESIVE EFFECTIVENESS IS DECREASED WHEN REUSED. THEREFORE, TREAD PORTION IS RECOMMENDED TO COAT WITH LOCTITE 271 MANUFACTURED BY HENKEL JAPAN OR EQUIVALENT.
 - ② THE RECOMMENDED TIGHTENING TORQUE OF REF. No. ⑨ TO BE 1 N·m.
 - ③ THE TIP OF REF. No. ⑪ SHALL BE FIXED TO THE CONCAVE PORTION WITH REF. No. ⑫ CLAMPED TO THE CABLE. OPPOSITE SIDE DIMENSION OF A HEXAGON SOCKET OF REF. No. ⑪ IS 1.27mm. AND THE RECOMMENDED TIGHTENING TORQUE OF REF. No. ⑪ TO BE 0.3 TO BE 0.4 N·m.
 - ④ MANUAL CRIMPING TOOL OF REF. No. ⑫ : HR10A-TC-02(THE HOLE DIAMETER FOR CRIMPING: $\phi 7$)
 - ⑤ ROTATION EXAMPLES OF REF. No. ① AND ⑨ ARE SHOWN.
 - ⑥ OVERPLATING : GOLD 0.2 μ m min.
UNDERPLATING : NICKEL 2 μ m min.
 - ⑦ REFER TO THE TECHNICAL SPECIFICATION ATAD-C0140 FOR ASSEMBLY PROCEDURE.
 - ⑧ FOR SECURE CLICK SENSATION WHEN MATING, DO NOT HOLD REF. No. ⑦. THIS PRODUCT SHALL BE MATED WITH MATING HALF BY HOLDING LINED (ACCORDION) AREA OF REF. No. ⑩. INSERT THE PLUG UNTIL IT CLICKS.
 - ⑨ FOR THE WITHDRAWAL, PULL THE CONNECTOR BY HOLDING REF. No. ⑦. THE CABLE PULL AND TWISTING STRENGTH AND OTHER CHARACTERISTICS MAY DIFFER, DEPENDING ON THE CABLE STRUCTURE. PLEASE CONFIRM BEFORE THE USE.

6	BRASS	NICKEL PLATING	12	BRASS	
5	PHOSPHOR BRONZE	NICKEL PLATING	11	STEEL	NICKEL PLATING $\#2.6 \times 0.45 \times 2$
4	PHOSPHOR BRONZE	⑥	10	CR	(BLACK)
3	PHOSPHOR BRONZE	⑥	9	BRASS	NICKEL PLATING
2	PPS	(BLACK) UL94V-0	8	POLYACETAL	(NATURAL)
1	ZINC ALLOY	MATTE FINISH NICKEL PLATING	7	BRASS	MATTE FINISH NICKEL PLATING
NO.	MATERIAL	FINISH, REMARKS	NO.	MATERIAL	FINISH, REMARKS

CODE NO. (OLD) CL	DRAWN Y.YAMADA '05.11.05	DESIGNED Y.YAMADA '05.11.05	CHECKED A.AKIYAMA '05.11.05	APPROVED M.SATO '05.11.05	RELEASED .
DRAWING NO. EDC3-114766		PART NO. HR25A-9P-20P			
SCALE 5 : 1		CODE NO. CL125-0600-2		1/1	
UNITS mm		HRS HIROSE ELECTRIC CO., LTD			

TO
R

X-ON Electronics

Largest Supplier of Electrical and Electronic Components

Click to view similar products for [Circular Push Pull Connectors](#) category:

Click to view products by [Hirose](#) manufacturer:

Other Similar products are found below :

[6407-249V-11273P](#) [6408-201V-13273](#) [6408-202V-13343](#) [6408-202V-17343](#) [EZG.0B.309.CLN](#) [FFA.2S.310.ZLA](#) [FGA.1B.307.CYCD72Z](#)
[FGJ.1B.304.CLLD76](#) [FGJ.1B.306.CWLD72](#) [FGJ.3B.304.CYMD10Z](#) [FGJ.3B.304.CYMD82Z](#) [PCS.01.250.DLLE24](#) [PHG.0K.305.CYMC40Z](#)
[PHG.1K.308.CLLK85](#) [PKG.M0.6BL.LZ](#) [PLC.M1.0SL.LA](#) [GMA.10.290.DN](#) [GMA.3B.090.DA](#) [PRG.M0.6GL.LC52GZ](#) [PSA.1S.275.CTLC66](#)
[ABF.1S.250.NTA](#) [133020F](#) [1331ER193MZ](#) [1332M107MZ](#) [DTS26Z19-32JA-LC](#) [DTS26Z19-32SA](#) [DTS26Z19-32SA-LC](#) [DTS26Z23-55HA](#)
[DTS26Z23-55HA-LC](#) [DTS26Z23-55JA-LC](#) [EAJ.1B.306.CWA](#) [ECG.XB.312.CLL](#) [1589430-2](#) [EEA.0B.305.CLN](#) [EEA.0B.309.CLL](#)
[ELF.00.250.NTL](#) [ERA.01.250.DLL](#) [BRD.0B.200.PCSG](#) [BRR.2S.200.PZVG](#) [HR10A-P](#) [CAH.M34.SLL.C72GZ](#) [CAJ.M34.SLL.C72GZ](#)
[300500](#) [ESB.00.303.NLL](#) [EXG.0B.309.HLN](#) [FFB.1S.250.CLAC27](#) [FGA.2B.306.CYCD92](#) [FGA.2B.306.CYCD92Z](#) [FGA.XB.312.CLAD72](#)
[FGJ.1B.302.CYMD62](#)