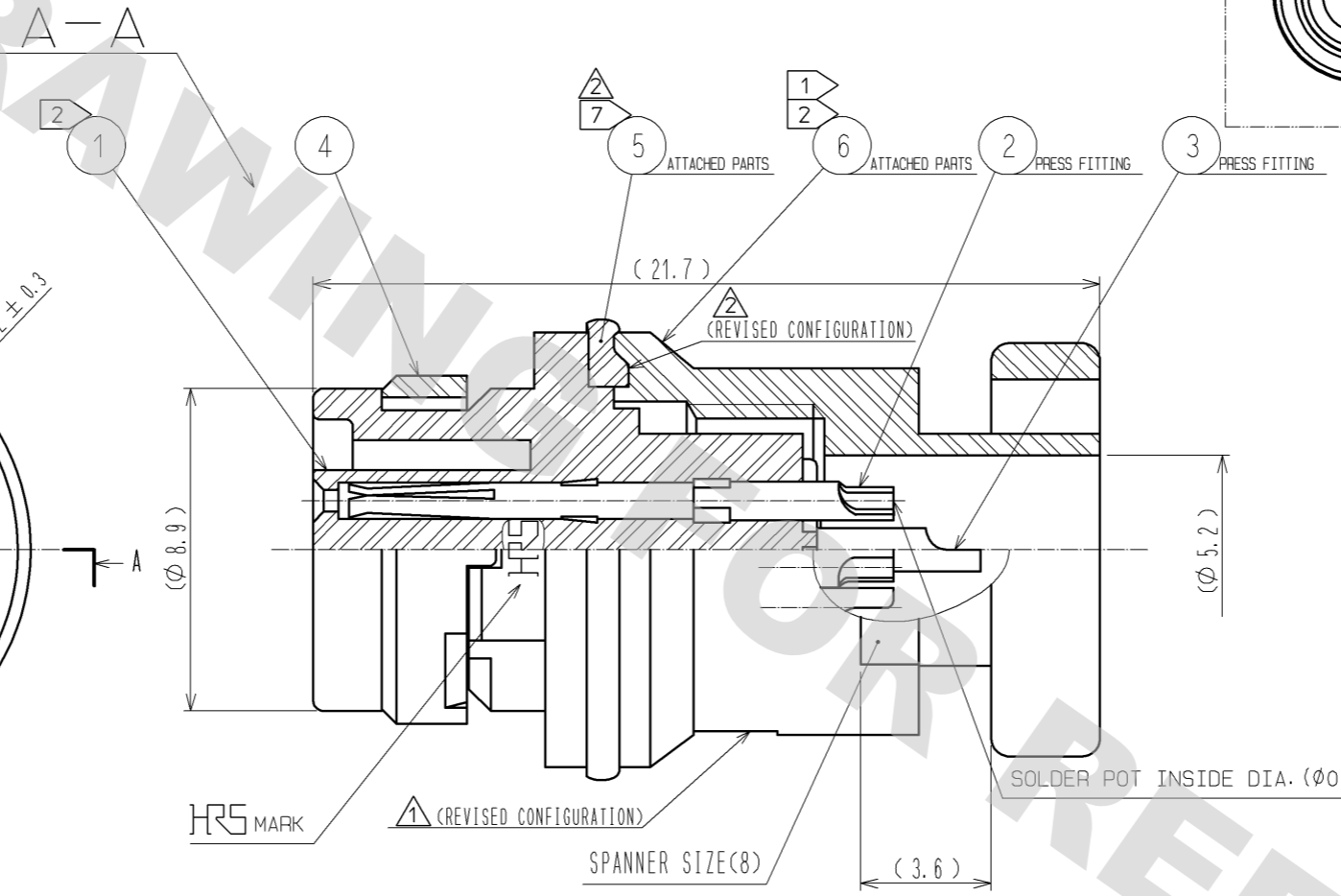
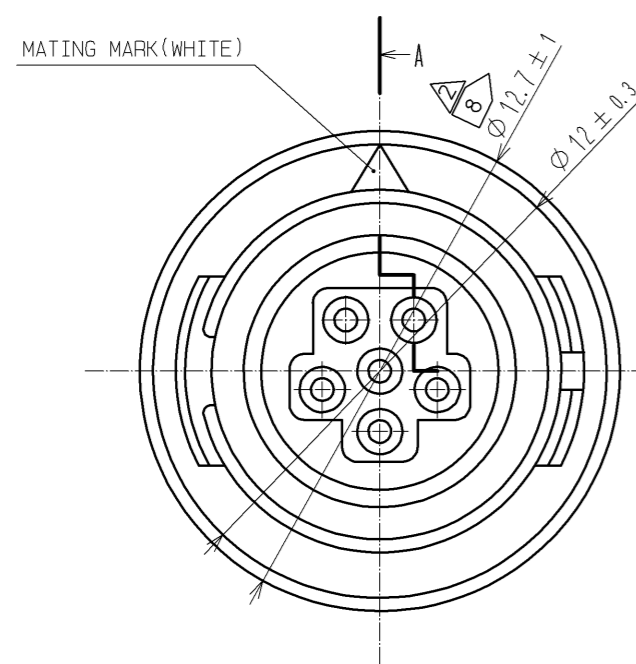
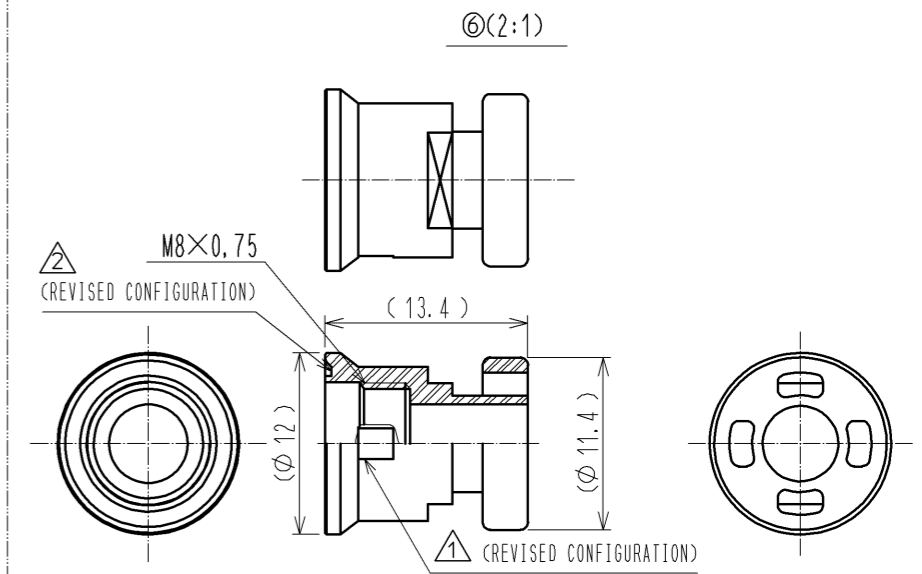
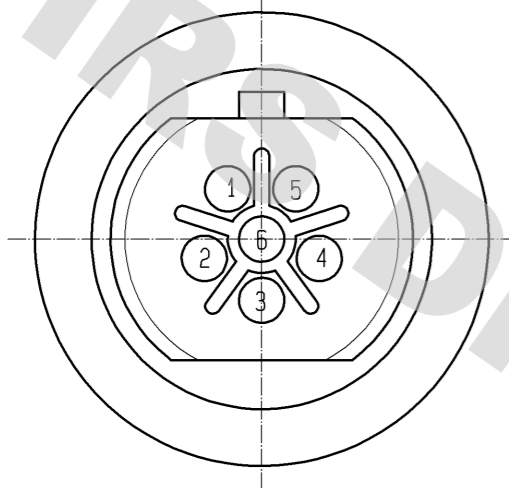
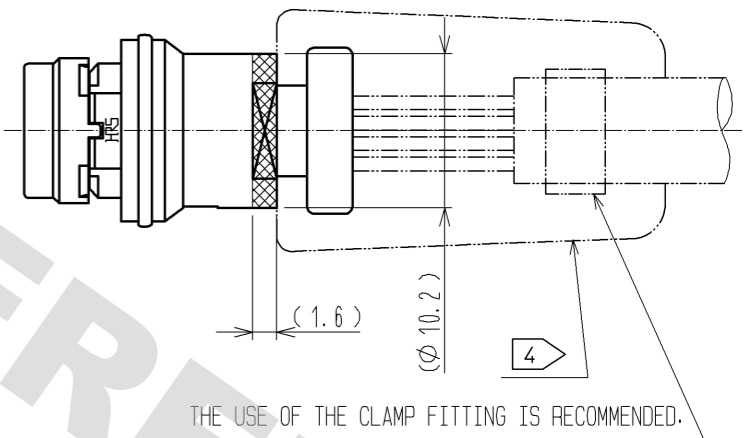


CONTACT POSITION ARRANGEMENT

THE CONTACT CONFIGURATION DEPICT
A VIEW FROM THE WIRING SIDE.



ASSEMBLY PROCEDURE (2:1)



- NOTES
- 1 THE RECOMMENDED CLAMP TORQUE OF REF. NO. ⑥ IS 0.5N·m. THREAD LOCKER TO THE THREADED PORTION OF REF.NO.④ IS RECOMMENDED TO PREVENT REF.NO.⑥ FROM LOOSING. RECOMMENDED THREAD LOCKER:LOCTITE271, LOCPRIMER 7649, HENKEL JAPAN LTD
 - 2 ROTATION EXAMPLES OF NO.① AND NO.⑥ ARE SHOWN. FOR OVERMOLDING NOTE THAT THE POSITION IS NOT ALWAYS THE SAME.
 - 3 APPLICABLE JIG
SOLDER TERMINATION FIXTURE : HR30-6R-6S-T01(CL150-0222-7)
 - 4 WHEN THIS PRODUCT ASSEMBLED, IT SHALL APPLY TO ETAD-C0198 AND BE OVERMOLDED BY CUSTOMER.
CABLE CLAMP STRENGTH, WATERPROOF PERFORMANCE DEPEND ON OVERMOLD. WE RECOMMENDED CHECKING THE QUALITY BEFORE THE USAGE
 - 5 THE MOLDING DIE FOR OVERMOLDING SHALL BE DESIGNED AS HOLDING DOWN THE AREA (SPANNER SETTING AREA(8)) AND CIRCUMFERENCE OF (φ10.2)) AS SHOWN IN THE DRAWING.
 - 6 SURFACE PLATING:GOLD PLATING 0.2μm min.
UNDER PLATING:NICKEL PLATING 2μm min.
 - 7 WHILE TIGHTENING REF.NO.⑥, MAKE SURE THAT REF.NO.⑧ IS NOT CAUGHT.
 - 8 φ12.7±1 SHOWS THE OUTER DIAMETER OF REF.NO.⑧ WHEN TIGHTENED REF.NO.⑥.

3	BERYLLIUM COPPER	6	6	POLYBUTYLENE TEREPHTHALATE (BLACK)	UL94V-0		
2	COPPER ALLOY	6	5	CHLOROPRENE RUBBER (BLACK)			
1	POLYPHENYLENE SULFIDE (BLACK)	UL94V-0	4	POLYPHENYLENE SULFIDE (BLACK)	UL94V-0		
NO.	MATERIAL	FINISH .	REMARKS	NO.	MATERIAL	FINISH .	REMARKS
UNITS	mm	SCALE	5 : 1	COUNT	6	DESCRIPTION OF REVISIONS	DIS-C-002446
		DESIGNED	WR. AJIRO	CHECKED	EJ. KUNII	DATE	12.02.07
HRS HIROSE ELECTRIC CO., LTD.		APPROVED	SU. OBARA 11.09.28	DRAWING NO.	EDC3-117627-00		
		CHECKED	HY. KISHI 11.09.28	PART NO.	HR30-6JB-6S		
		DESIGNED	WR. AJIRO 11.09.27	CODE NO.	CL130-2028-0-00		
		DRAWN	WR. AJIRO 11.09.27				1/1

DRAWING FOR REFERENCE: This is subject to change without notice
08/11/2012

X-ON Electronics

Largest Supplier of Electrical and Electronic Components

Click to view similar products for [Circular Push Pull Connectors](#) category:

Click to view products by [Hirose](#) manufacturer:

Other Similar products are found below :

[6407-249V-11273P](#) [6408-201V-13273](#) [6408-202V-13343](#) [6408-202V-17343](#) [EZG.0B.309.CLN](#) [FFA.2S.310.ZLA](#) [FGA.1B.307.CYCD72Z](#)
[FGJ.1B.304.CLLD76](#) [FGJ.1B.306.CWLD72](#) [FGJ.3B.304.CYMD10Z](#) [FGJ.3B.304.CYMD82Z](#) [PCS.01.250.DLLE24](#) [PHG.0K.305.CYMC40Z](#)
[PHG.1K.308.CLLK85](#) [PKG.M0.6BL.LZ](#) [PLC.M1.0SL.LA](#) [GMA.10.290.DN](#) [GMA.3B.090.DA](#) [PRG.M0.6GL.LC52GZ](#) [PSA.1S.275.CTLC66](#)
[ABF.1S.250.NTA](#) [133020F](#) [1331ER193MZ](#) [1332M107MZ](#) [DTS26Z19-32JA-LC](#) [DTS26Z19-32SA](#) [DTS26Z19-32SA-LC](#) [DTS26Z23-55HA](#)
[DTS26Z23-55HA-LC](#) [DTS26Z23-55JA-LC](#) [EAJ.1B.306.CWA](#) [ECG.XB.312.CLL](#) [1589430-2](#) [EEA.0B.305.CLN](#) [EEA.0B.309.CLL](#)
[ELF.00.250.NTL](#) [ERA.01.250.DLL](#) [BRD.0B.200.PCSG](#) [BRR.2S.200.PZVG](#) [HR10A-P](#) [CAH.M34.SLL.C72GZ](#) [CAJ.M34.SLL.C72GZ](#)
[300500](#) [ESB.00.303.NLL](#) [EXG.0B.309.HLN](#) [FFB.1S.250.CLAC27](#) [FGA.2B.306.CYCD92](#) [FGA.2B.306.CYCD92Z](#) [FGA.XB.312.CLAD72](#)
[FGJ.1B.302.CYMD62](#)