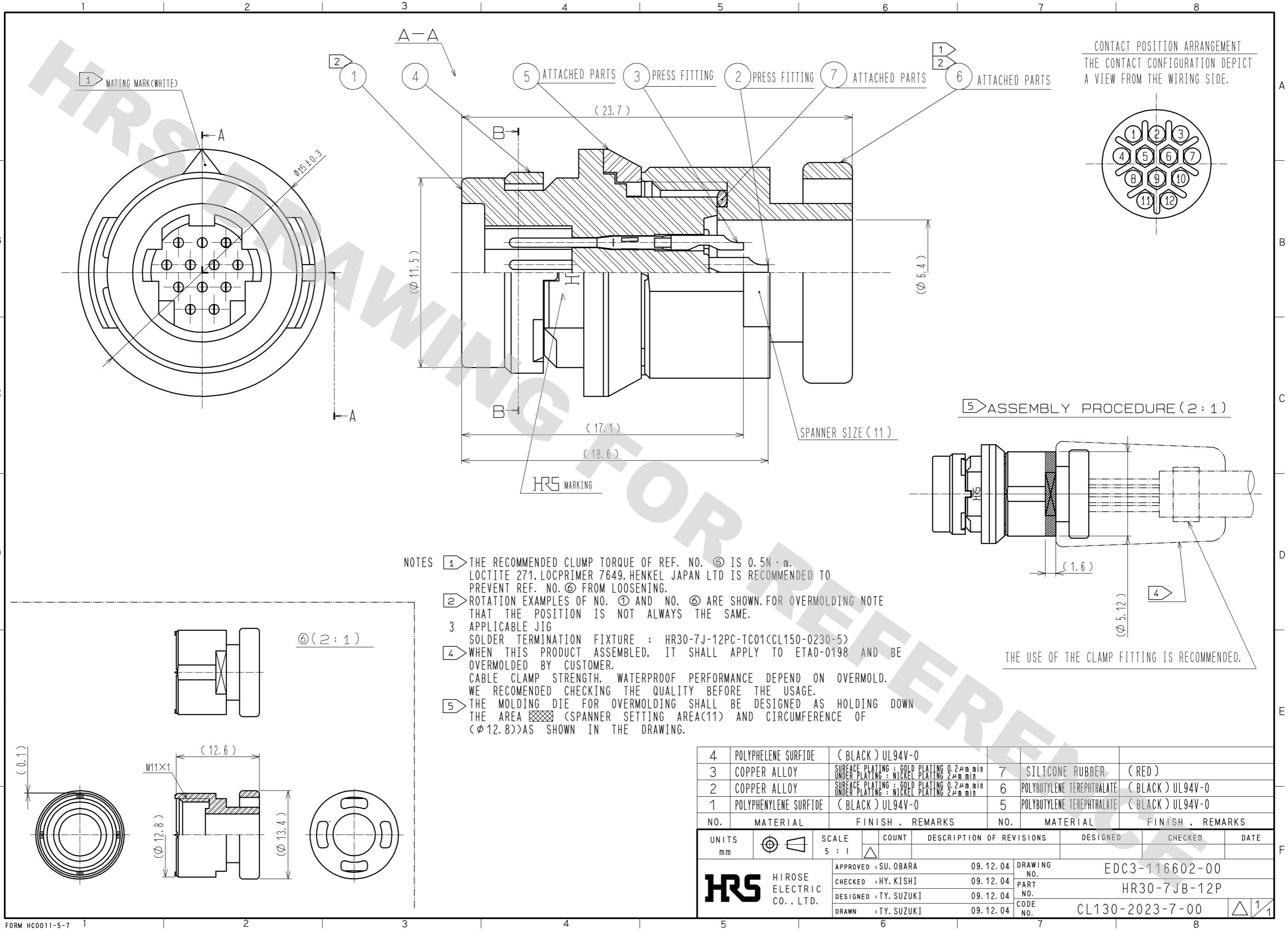
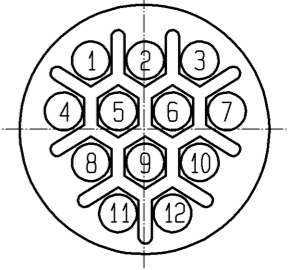


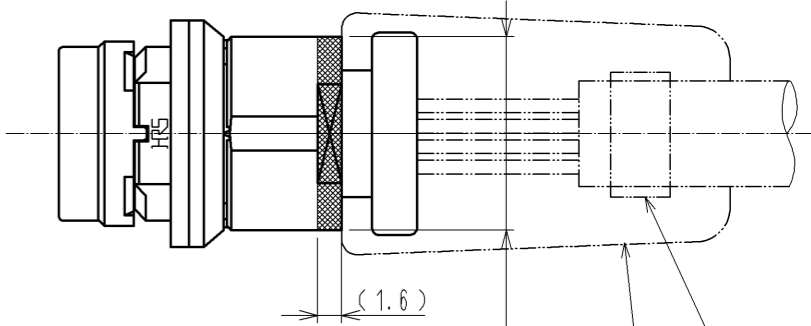
DRAWING FOR REFERENCE: This is subject to change without notice
08/11/2012



CONTACT POSITION ARRANGEMENT
THE CONTACT CONFIGURATION DEPICT
A VIEW FROM THE WIRING SIDE.



5 ASSEMBLY PROCEDURE (2:1)



THE USE OF THE CLAMP FITTING IS RECOMMENDED.

- NOTES
- 1 THE RECOMMENDED CLAMP TORQUE OF REF. NO. 6 IS 0.5N · m. LOCTITE 271, LOCPRIMER 7649, HENKEL JAPAN LTD IS RECOMMENDED TO PREVENT REF. NO. 6 FROM LOOSENING.
 - 2 ROTATION EXAMPLES OF NO. 1 AND NO. 6 ARE SHOWN. FOR OVERMOLDING NOTE THAT THE POSITION IS NOT ALWAYS THE SAME.
 - 3 APPLICABLE JIG
SOLDER TERMINATION FIXTURE : HR30-7J-12PC-TC01(CL150-0230-5)
 - 4 WHEN THIS PRODUCT ASSEMBLED. IT SHALL APPLY TO ETAD-0198 AND BE OVERMOLDED BY CUSTOMER.
CABLE CLAMP STRENGTH, WATERPROOF PERFORMANCE DEPEND ON OVERMOLD. WE RECOMMENDED CHECKING THE QUALITY BEFORE THE USAGE.
 - 5 THE MOLDING DIE FOR OVERMOLDING SHALL BE DESIGNED AS HOLDING DOWN THE AREA (SPANNER SETTING AREA(11) AND CIRCUMFERENCE OF (φ12.8))AS SHOWN IN THE DRAWING.

4	POLYPHELENE SURFIDE	(BLACK) UL94V-0	7	SILICONE RUBBER	(RED)
3	COPPER ALLOY	SURFACE PLATING : GOLD PLATING 0.2μm min UNDER PLATING : NICKEL PLATING 2μm min	6	POLYBUTYLENE TEREPHTHALATE	(BLACK) UL94V-0
2	COPPER ALLOY	SURFACE PLATING : GOLD PLATING 0.2μm min UNDER PLATING : NICKEL PLATING 2μm min	5	POLYBUTYLENE TEREPHTHALATE	(BLACK) UL94V-0
1	POLYPHENYLENE SURFIDE	(BLACK) UL94V-0			
NO.	MATERIAL	FINISH . REMARKS	NO.	MATERIAL	FINISH . REMARKS
UNITS mm		SCALE 5 : 1	COUNT	DESCRIPTION OF REVISIONS	
DESIGNED		CHECKED		DATE	
APPROVED : SU. OBARA		09.12.04		DRAWING NO. EDC3-116602-00	
CHECKED : HY. KISHI		09.12.04		PART NO. HR30-7JB-12P	
DESIGNED : TY. SUZUKI		09.12.04		CODE NO. CL130-2023-7-00	
DRAWN : TY. SUZUKI		09.12.04		1/1	

X-ON Electronics

Largest Supplier of Electrical and Electronic Components

Click to view similar products for [Circular Push Pull Connectors](#) category:

Click to view products by [Hirose](#) manufacturer:

Other Similar products are found below :

[6407-249V-11273P](#) [6408-201V-13273](#) [6408-202V-13343](#) [6408-202V-17343](#) [EZG.0B.309.CLN](#) [FFA.2S.310.ZLA](#) [FGA.1B.307.CYCD72Z](#)
[FGJ.1B.304.CLLD76](#) [FGJ.1B.306.CWLD72](#) [FGJ.2B.302.CYMD82Z](#) [FGJ.2B.310.CYMD72Z](#) [FGJ.3B.304.CYMD10Z](#)
[FGJ.3B.304.CYMD82Z](#) [FHJ.2B.310.CLLD72](#) [PCS.01.250.DLLE24](#) [PHG.0K.305.CYMC40Z](#) [PHG.1K.308.CLLK85](#) [PKG.M0.6BL.LZ](#)
[PLC.M1.0SL.LA](#) [GMA.10.290.DN](#) [GMA.3B.090.DA](#) [PRG.M0.6GL.LC52GZ](#) [PSA.1S.275.CTLC66](#) [ABF.1S.250.NTA](#) [133020F](#)
[1331ER193MZ](#) [1332M107MZ](#) [DTS26Z19-32JA-LC](#) [DTS26Z19-32SA](#) [DTS26Z19-32SA-LC](#) [DTS26Z23-55HA](#) [DTS26Z23-55HA-LC](#)
[DTS26Z23-55JA-LC](#) [EAJ.1B.306.CWA](#) [ECG.XB.312.CLL](#) [1589430-2](#) [EEA.0B.305.CLN](#) [EEA.0B.309.CLL](#) [ELF.00.250.NTL](#)
[ERA.01.250.DLL](#) [BRD.0B.200.PCSG](#) [BRR.2S.200.PZVG](#) [HR10A-P](#) [CAH.M34.SLL.C72GZ](#) [CAJ.M34.SLL.C72GZ](#) [300500](#)
[ESB.00.303.NLL](#) [EXG.0B.309.HLN](#) [FFB.1S.250.CLAC27](#) [FFG.1B.306.CLAZ](#)