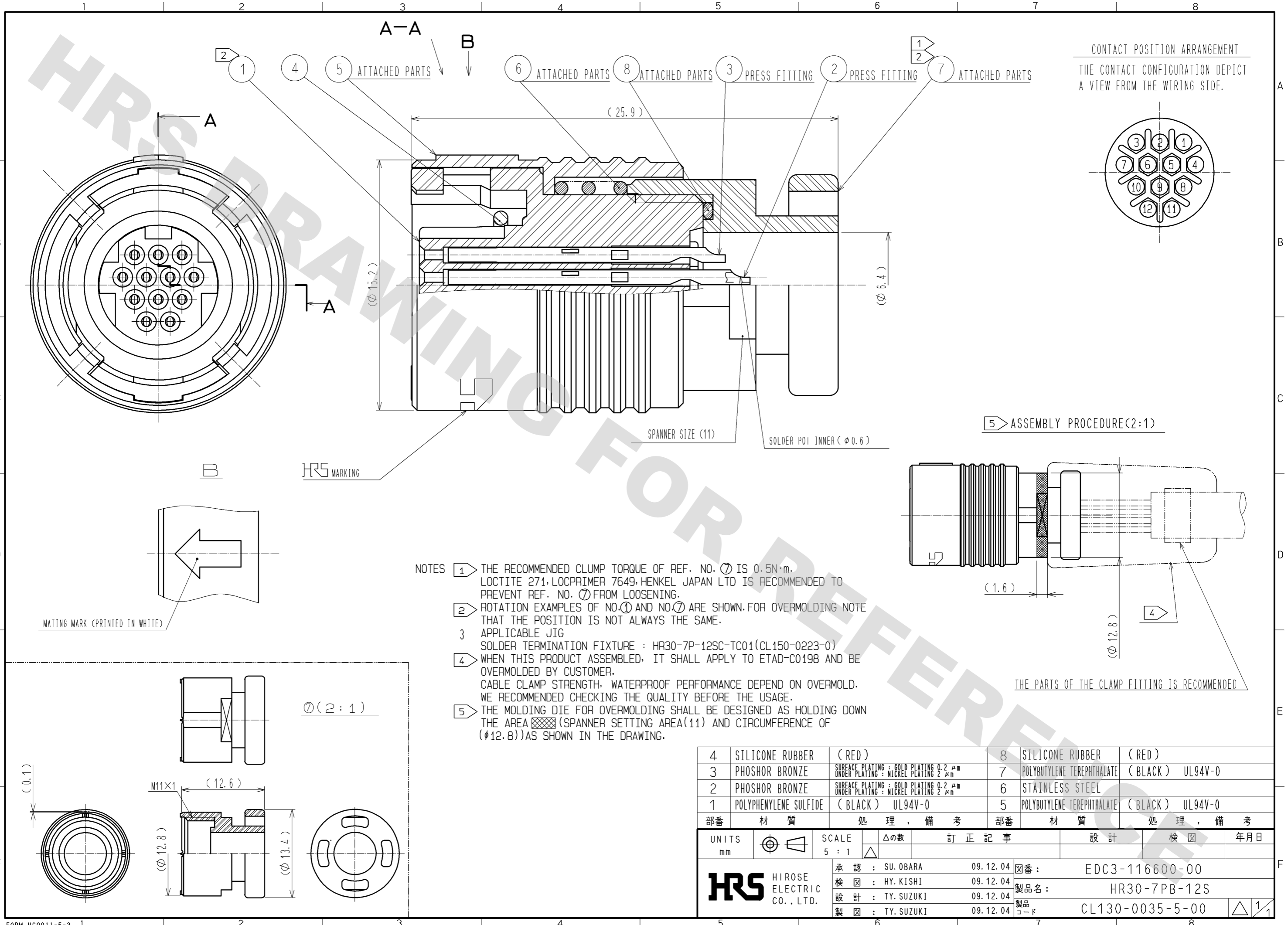
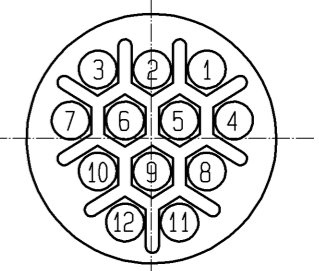


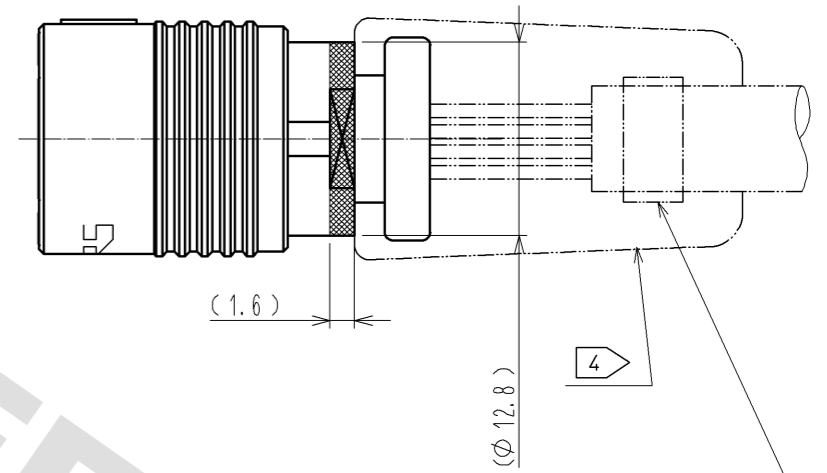
DRAWING FOR REFERENCE: This is subject to change without notice
08/11/2012



CONTACT POSITION ARRANGEMENT
THE CONTACT CONFIGURATION DEPICT
A VIEW FROM THE WIRING SIDE.



5 ASSEMBLY PROCEDURE(2:1)



- NOTES
- 1 THE RECOMMENDED CLUMP TORQUE OF REF. NO. 7 IS 0.5N·m. LOCTITE 271, LOCPRIMER 7649, HENKEL JAPAN LTD IS RECOMMENDED TO PREVENT REF. NO. 7 FROM LOOSENING.
 - 2 ROTATION EXAMPLES OF NO.1 AND NO.7 ARE SHOWN.FOR OVERMOLDING NOTE THAT THE POSITION IS NOT ALWAYS THE SAME.
 - 3 APPLICABLE JIG
SOLDER TERMINATION FIXTURE : HR30-7P-12SC-TC01(CL150-0223-0)
 - 4 WHEN THIS PRODUCT ASSEMBLED, IT SHALL APPLY TO ETAD-C0198 AND BE OVERMOLDED BY CUSTOMER.
CABLE CLAMP STRENGTH, WATERPROOF PERFORMANCE DEPEND ON OVERMOLD. WE RECOMMENDED CHECKING THE QUALITY BEFORE THE USAGE.
 - 5 THE MOLDING DIE FOR OVERMOLDING SHALL BE DESIGNED AS HOLDING DOWN THE AREA (SPANNER SETTING AREA(11) AND CIRCUMFERENCE OF (φ12.8))AS SHOWN IN THE DRAWING.

4	SILICONE RUBBER	(RED)	8	SILICONE RUBBER	(RED)
3	PHOSHOR BRONZE	SURFACE PLATING : GOLD PLATING 0.2 μm UNDER PLATING : NICKEL PLATING 2 μm	7	POLYBUTYLENE TEREPHTHALATE	(BLACK) UL94V-0
2	PHOSHOR BRONZE	SURFACE PLATING : GOLD PLATING 0.2 μm UNDER PLATING : NICKEL PLATING 2 μm	6	STAINLESS STEEL	
1	POLYPHENYLENE SULFIDE	(BLACK) UL94V-0	5	POLYBUTYLENE TEREPHTHALATE	(BLACK) UL94V-0
部番	材 質	処 理 , 備 考	部番	材 質	処 理 , 備 考
UNITS mm		SCALE 5 : 1	△の数	訂 正 記 事	設 計
HRS HIROSE ELECTRIC CO., LTD.		承 認 : SU. OBARA 09.12.04	図番:	EDC3-116600-00	
		検 査 : HY. KISHI 09.12.04	製品名:	HR30-7PB-12S	
		設 計 : TY. SUZUKI 09.12.04	製品コード:	CL130-0035-5-00	
		製 図 : TY. SUZUKI 09.12.04			年月日

X-ON Electronics

Largest Supplier of Electrical and Electronic Components

Click to view similar products for [Circular Push Pull Connectors](#) category:

Click to view products by [Hirose](#) manufacturer:

Other Similar products are found below :

[6407-249V-11273P](#) [6408-201V-13273](#) [6408-202V-13343](#) [6408-202V-17343](#) [EZG.0B.309.CLN](#) [FFA.2S.310.ZLA](#) [FGA.1B.307.CYCD72Z](#)
[FGJ.1B.304.CLLD76](#) [FGJ.1B.306.CWLD72](#) [FGJ.3B.304.CYMD10Z](#) [FGJ.3B.304.CYMD82Z](#) [FHG.1B.303.CYCZ](#) [PCS.01.250.DLLE24](#)
[PHG.0K.305.CYMC40Z](#) [PHG.1K.308.CLLK85](#) [PKG.M0.6BL.LZ](#) [PLC.M1.0SL.LA](#) [GMA.10.290.DN](#) [GMA.3B.090.DA](#)
[PRG.M0.6GL.LC52GZ](#) [PSA.1S.275.CTLC66](#) [ABF.1S.250.NTA](#) [133020F](#) [1331ER193MZ](#) [1332M107MZ](#) [DTS26Z19-32JA-LC](#) [DTS26Z19-](#)
[32SA](#) [DTS26Z19-32SA-LC](#) [DTS26Z23-55HA](#) [DTS26Z23-55HA-LC](#) [EAJ.1B.306.CWA](#) [ECG.XB.312.CLL](#) [1589430-2](#) [EEA.0B.305.CLN](#)
[EEA.0B.309.CLL](#) [ELF.00.250.NTL](#) [ERA.01.250.DLL](#) [BRR.2S.200.PZVG](#) [HR10A-P](#) [CAH.M34.SLL.C72GZ](#) [CAJ.M34.SLL.C72GZ](#) [300500](#)
[ESB.00.303.NLL](#) [EXG.0B.309.HLN](#) [FFB.1S.250.CLAC27](#) [FGA.2B.306.CYCD92](#) [FGA.2B.306.CYCD92Z](#) [FGA.XB.312.CLAD72](#)
[FGJ.1B.302.CYMD62](#) [FGJ.3B.308.CLLD72Z](#)