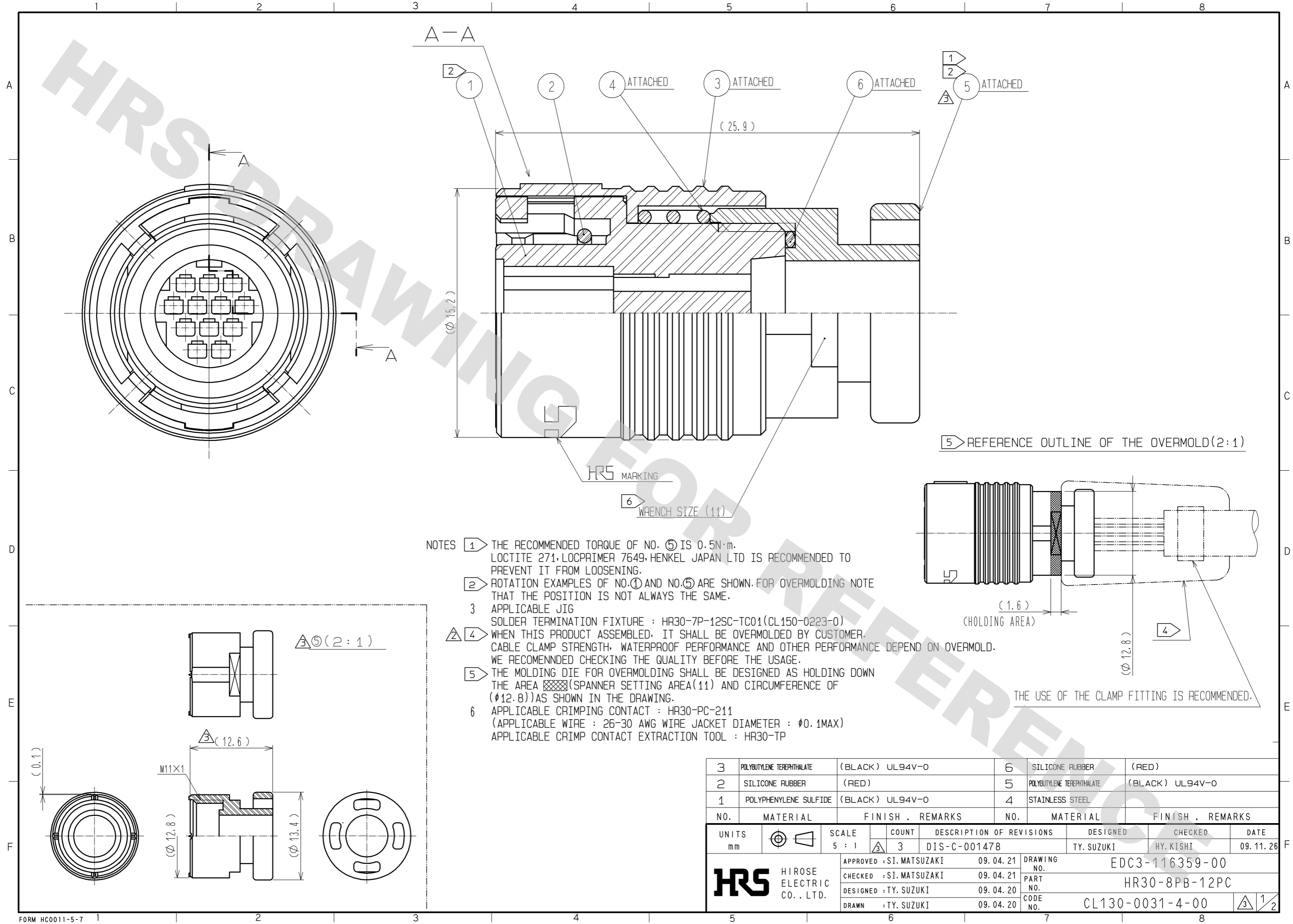


DRAWING FOR REFERENCE: This is subject to change without notice
08/11/2012

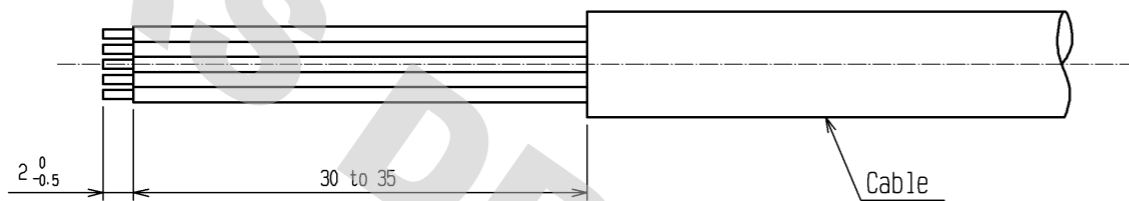


- NOTES
- ① THE RECOMMENDED TORQUE OF NO. ⑤ IS 0.5N·m. LOCTITE 271, LOCPRIMER 7649, HENKEL JAPAN LTD IS RECOMMENDED TO PREVENT IT FROM LOOSENING.
 - ② ROTATION EXAMPLES OF NO.① AND NO.⑤ ARE SHOWN FOR OVERMOLDING NOTE THAT THE POSITION IS NOT ALWAYS THE SAME.
 - ③ APPLICABLE JIG
SOLDER TERMINATION FIXTURE : HR30-7P-12SC-TC01(CL150-0223-0)
 - ④ WHEN THIS PRODUCT ASSEMBLED, IT SHALL BE OVERMOLDED BY CUSTOMER. CABLE CLAMP STRENGTH, WATERPROOF PERFORMANCE AND OTHER PERFORMANCE DEPEND ON OVERMOLD. WE RECOMMENDED CHECKING THE QUALITY BEFORE THE USAGE.
 - ⑤ THE MOLDING DIE FOR OVERMOLDING SHALL BE DESIGNED AS HOLDING DOWN THE AREA (SPANNER SETTING AREA(11) AND CIRCUMFERENCE OF (φ12.8)) AS SHOWN IN THE DRAWING.
 - ⑥ APPLICABLE CRIMPING CONTACT : HR30-PC-211
(APPLICABLE WIRE : 26-30 AWG WIRE JACKET DIAMETER : φ0.1MAX)
APPLICABLE CRIMP CONTACT EXTRACTION TOOL : HR30-TP

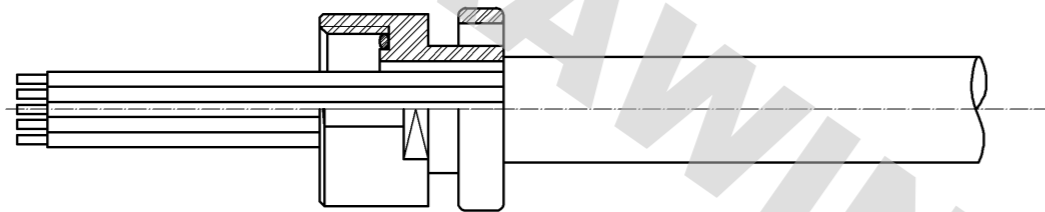
3	POLYBUTYLENE TEREPHTHALATE	(BLACK) UL94V-0	6	SILICONE RUBBER	(RED)
2	SILICONE RUBBER	(RED)	5	POLYBUTYLENE TEREPHTHALATE	(BLACK) UL94V-0
1	POLYPHENYLENE SULFIDE	(BLACK) UL94V-0	4	STAINLESS STEEL	
NO.	MATERIAL	FINISH . REMARKS	NO.	MATERIAL	FINISH . REMARKS
UNITS mm			SCALE 5 : 1		
COUNT 3			DESCRIPTION OF REVISIONS DIS-C-001478		
DESIGNED TY. SUZUKI			CHECKED HY. KISHI		
DATE 09.11.26			DATE		
APPROVED : SI. MATSUZAKI 09.04.21			DRAWING NO. EDC3-116359-00		
CHECKED : SI. MATSUZAKI 09.04.21			PART NO. HR30-8PB-12PC		
DESIGNED : TY. SUZUKI 09.04.20			CODE NO. CL130-0031-4-00		
DRAWN : TY. SUZUKI 09.04.20			1/2		

Assembly procedure

1. Strip the Cable Jacket.



2. Insert the Spacer to the Cable.



3. Insert the crimped insulated wires into the terminal.
Note) C/H shown in table 1. ⚠

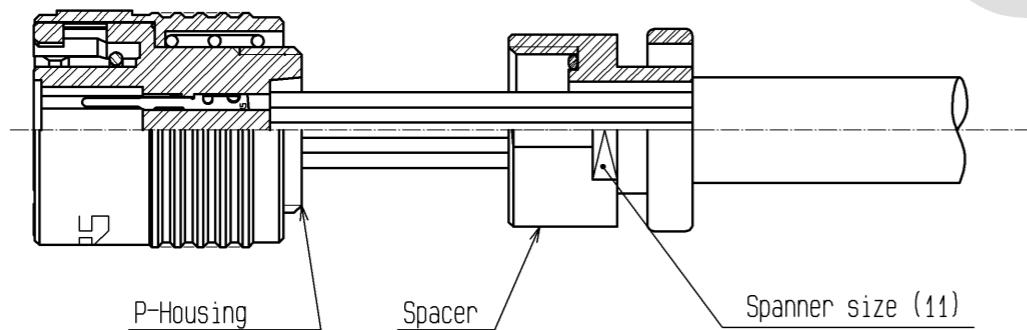
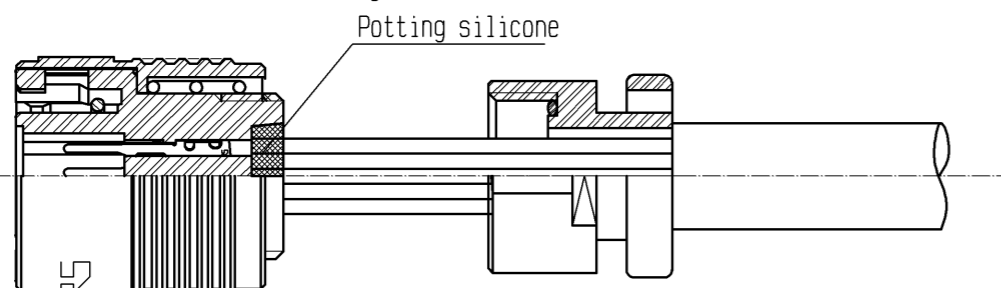


table 1 ⚠

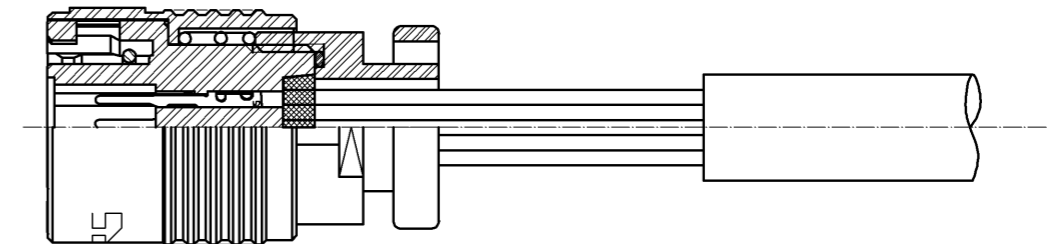
AWG SIZE	Contact wire crimp height	Covering crimp height
UL1571 Stranded wire AWG26	0.52~0.58	0.85~1.00
UL1571 Stranded wire AWG28	0.48~0.54	0.85~1.00
UL1571 Stranded wire AWG30	0.46~0.52	0.80~0.95

4. Potting silicone into the P-Housing.

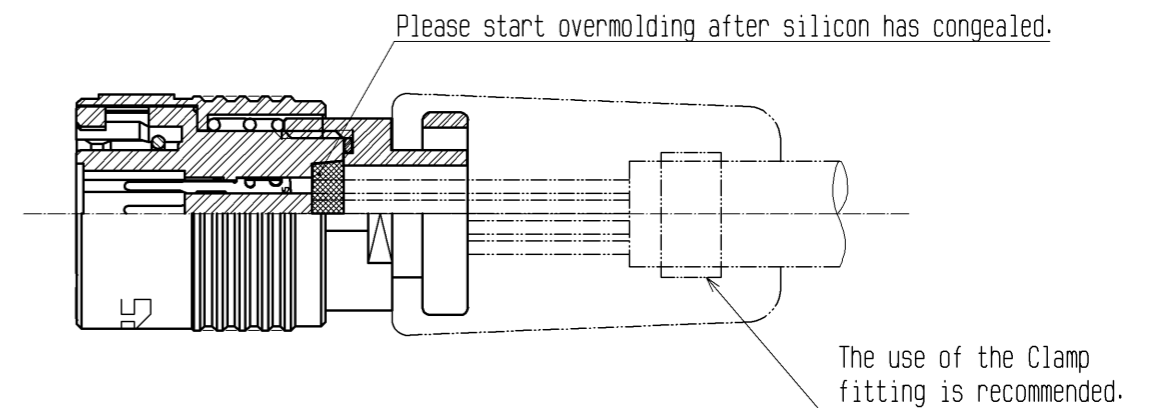


5. Assemble Spacer to the P-Housing.

(The recommended clamp torque of Spacer to be 0.5 N·m.
Loctite 271, Locprimer 7649, Loctite Japan is recommended to prevent Spacer from loosening.)

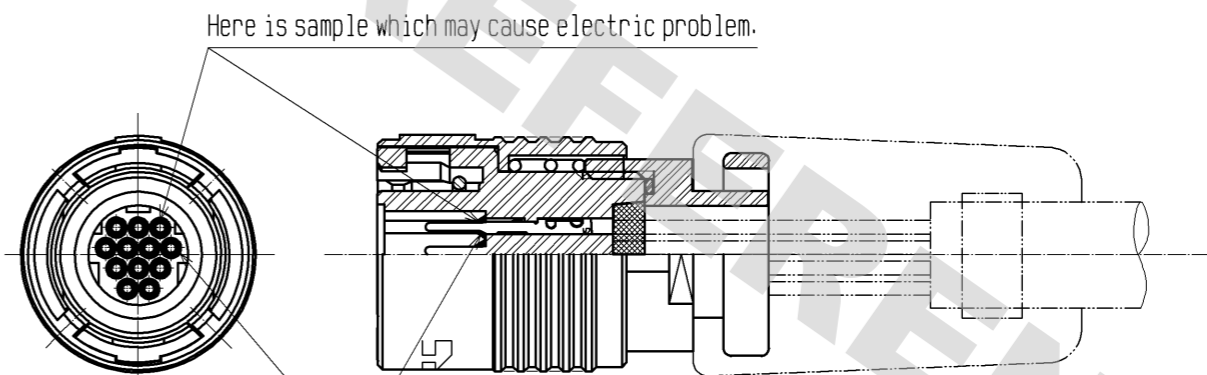


6. Overmolding.



7. After Overmolding.

Please check whether silicon and overmold has exceeded to edge of contact hole which is mating point side.



Silicone or Overmold.
(Even if one of exceeding of overmold or silicone, it may cause electric problem.)

HRS	DRAWING NO.	EDC3-116359-00
	PART NO.	HR30-8PB-12PC
	CODE NO.	CL130-0031-4-00
		⚠ 2/2

DRAWING FOR REFERENCE: This is subject to change without notice
08/11/2012

X-ON Electronics

Largest Supplier of Electrical and Electronic Components

Click to view similar products for [Circular Push Pull Connectors](#) category:

Click to view products by [Hirose](#) manufacturer:

Other Similar products are found below :

[6407-249V-11273P](#) [6408-201V-13273](#) [6408-202V-13343](#) [6408-202V-17343](#) [EZG.0B.309.CLN](#) [FFA.2S.310.ZLA](#) [FGA.1B.307.CYCD72Z](#)
[FGJ.1B.304.CLLD76](#) [FGJ.1B.306.CWLD72](#) [FGJ.3B.304.CYMD10Z](#) [FGJ.3B.304.CYMD82Z](#) [PCS.01.250.DLLE24](#) [PHG.0K.305.CYMC40Z](#)
[PHG.1K.308.CLLK85](#) [PKG.M0.6BL.LZ](#) [PLC.M1.0SL.LA](#) [GMA.10.290.DN](#) [GMA.3B.090.DA](#) [PRG.M0.6GL.LC52GZ](#) [PSA.1S.275.CTLC66](#)
[ABF.1S.250.NTA](#) [133020F](#) [1331ER193MZ](#) [1332M107MZ](#) [DTS26Z19-32JA-LC](#) [DTS26Z19-32SA](#) [DTS26Z19-32SA-LC](#) [DTS26Z23-55HA](#)
[DTS26Z23-55HA-LC](#) [DTS26Z23-55JA-LC](#) [EAJ.1B.306.CWA](#) [ECG.XB.312.CLL](#) [1589430-2](#) [EEA.0B.305.CLN](#) [EEA.0B.309.CLL](#)
[ELF.00.250.NTL](#) [ERA.01.250.DLL](#) [BRD.0B.200.PCSG](#) [BRR.2S.200.PZVG](#) [HR10A-P](#) [CAH.M34.SLL.C72GZ](#) [CAJ.M34.SLL.C72GZ](#)
[300500](#) [ESB.00.303.NLL](#) [EXG.0B.309.HLN](#) [FFB.1S.250.CLAC27](#) [FGA.2B.306.CYCD92](#) [FGA.2B.306.CYCD92Z](#) [FGA.XB.312.CLAD72](#)
[FGJ.1B.302.CYMD62](#)