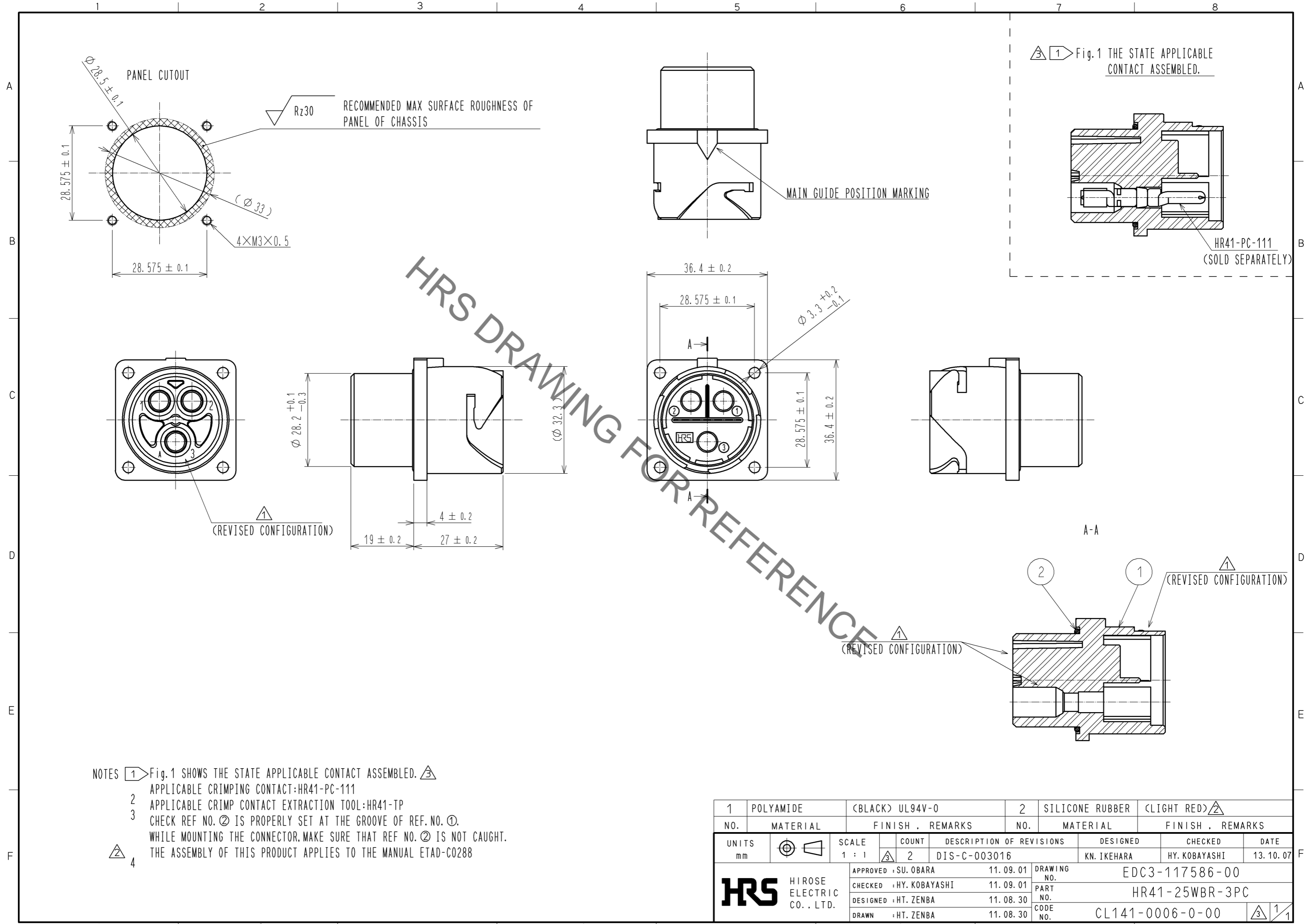


Aug.1.2021 Copyright 2021 HIROSE ELECTRIC CO., LTD. All Rights Reserved.  
In case of consideration for using Automotive equipment / device which demand high reliability, kindly contact our sales window correspondents.



NOTES Fig.1 SHOWS THE STATE APPLICABLE CONTACT ASSEMBLED. APPLICABLE CRIMPING CONTACT:HR41-PC-111  
 2 APPLICABLE CRIMP CONTACT EXTRACTION TOOL:HR41-TP  
 3 CHECK REF NO. ② IS PROPERLY SET AT THE GROOVE OF REF. NO. ①.  
 WHILE MOUNTING THE CONNECTOR, MAKE SURE THAT REF NO. ② IS NOT CAUGHT.  
 4 THE ASSEMBLY OF THIS PRODUCT APPLIES TO THE MANUAL ETAD-C0288

1	POLYAMIDE	(BLACK) UL94V-0	2	SILICONE RUBBER	(LIGHT RED)
NO.	MATERIAL	FINISH . REMARKS	NO.	MATERIAL	FINISH . REMARKS
UNITS		SCALE	COUNT	DESCRIPTION OF REVISIONS	
mm		1 : 1	2	DIS-C-003016	
APPROVED : SU. OBARA			11.09.01	DESIGNED	KN. IKEHARA
CHECKED : HY. KOBAYASHI			11.09.01	CHECKED	HY. KOBAYASHI
DESIGNED : HT. ZENBA			11.08.30	DATE	13.10.07
DRAWN : HT. ZENBA			11.08.30	DRAWING NO. EDC3-117586-00	
<b>HRS</b> HIROSE ELECTRIC CO., LTD.				PART NO. HR41-25WBR-3PC	
				CODE NO. CL141-0006-0-00	
				1	

## X-ON Electronics

Largest Supplier of Electrical and Electronic Components

*Click to view similar products for [Standard Circular Connector](#) category:*

*Click to view products by [Hirose](#) manufacturer:*

Other Similar products are found below :

[5M2530B10P](#) [600259N006](#) [600273N007](#) [6134-336-13149](#) [6134-337-11149](#) [6134-337-2390](#) [6134-341-17149](#) [6280-4SG-516](#) [6280-7SG-3DC](#)  
[6290](#) [6291A](#) [66200A-10](#) [680-SMG](#) [681-PMG](#) [CXS3102A14S2P](#) [CXS3102A181S](#) [7251-6SG-300](#) [7271-6SG-300](#) [7282-3PG-300-CH3](#) [75-](#)  
[474014-05S](#) [75-474618-01S](#) [75-474618-04S](#) [799539-000](#) [MI8-SE](#) [805-005-07NF11-19PC](#) [805-005-07NF15-7PA](#) [8280-4PG-516](#) [8280-7PG-](#)  
[519](#) [8282-5PG-519](#) [836783-1](#) [MP-4102-25P-C](#) [862256-1](#) [864019-2](#) [866857-1](#) [867865-1](#) [PT01SP-14-18P](#) [PT08P-14-5S](#) [PTSF06SE-14-12S](#)  
[120-1833-000](#) [QCM019PC2DC012B](#) [1-2069279-1](#) [121583-0217](#) [121667-0020](#) [129591AU](#) [1000B BULK](#) [RD10A16-19-P6CS051/1](#)  
[RD10A20-31-P8CS051/1](#) [RD16A14-12-S6CS051/2](#) [1301240290](#) [1301240347](#) [1301860202](#)