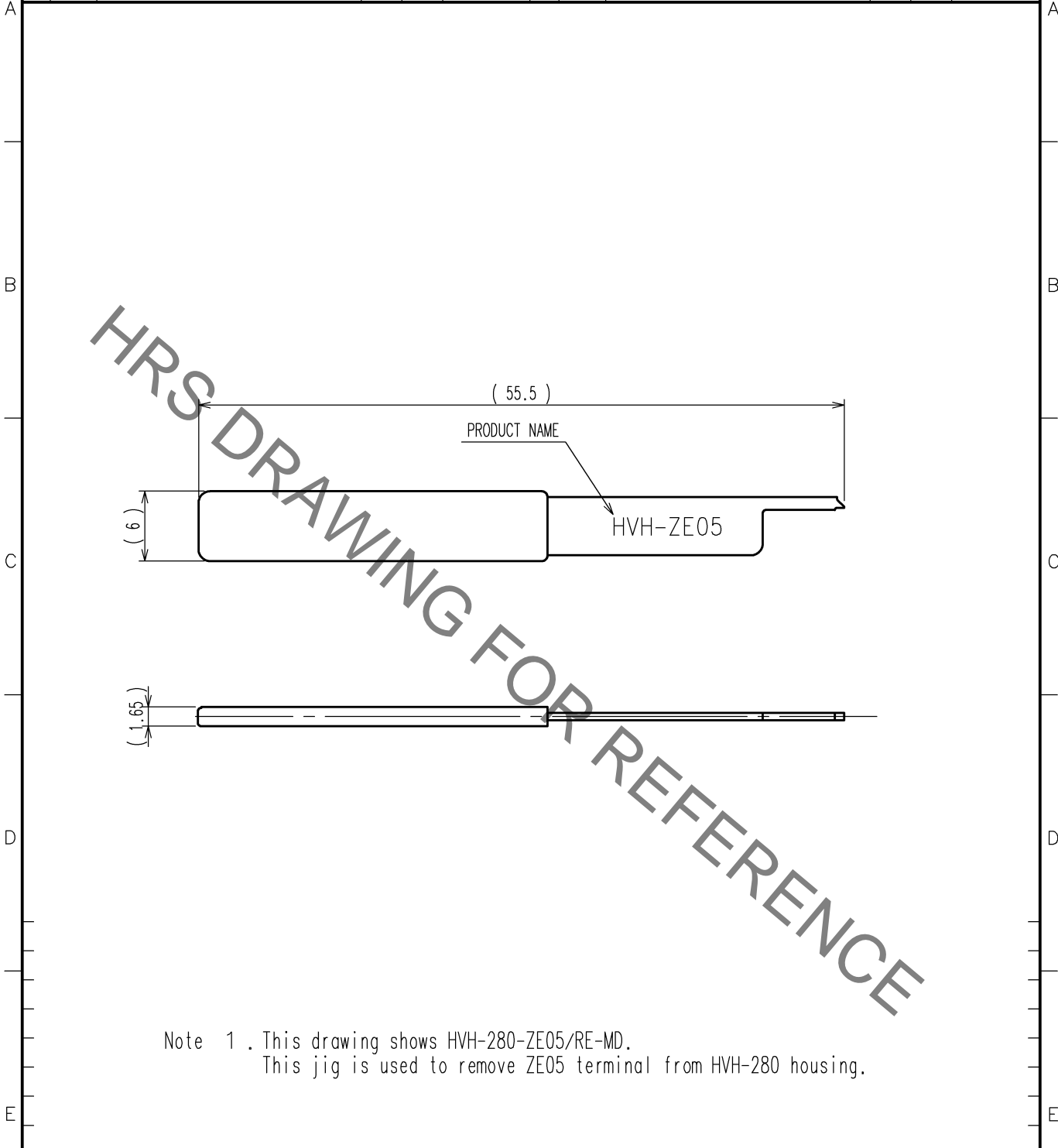


Dec.1.2021 Copyright 2021 HIROSE ELECTRIC CO., LTD. All Rights Reserved.
 In case of consideration for using Automotive equipment / device which demand high reliability, kindly contact our sales window correspondents.

1	2		3		4				
COUNT	DESCRIPTION OF REVISIONS	BY	CHKD	DATE	COUNT	DESCRIPTION OF REVISIONS	BY	CHKD	DATE
△					△				. .
△					△				. .
△					△				. .



Note 1 . This drawing shows HVH-280-ZE05/RE-MD.
 This jig is used to remove ZE05 terminal from HVH-280 housing.

2			4		
1			3		
NO.	MATERIAL	FINISH, REMARKS	NO.	MATERIAL	FINISH, REMARKS
CODE NO. (OLD) CL?			DRAWN	DESIGNED	CHECKED
			M. TAKAHASHI 19. 5.17	M. TAKAHASHI 19. 5.17	H. YANAGISAWA 19. 5.20
					APPROVED
					T. ARAKAWA 19. 5.17
					RELEASED
DRAWING NO. EDC4-285398		PART NO. HVH-280-ZE05/RE-MD			
SACLE 2 : 1		CODE NO. CL902-5158-0			
UNITS mm		1/1			

TO
PE

X-ON Electronics

Largest Supplier of Electrical and Electronic Components

Click to view similar products for [Extraction, Removal & Insertion Tools](#) category:

Click to view products by [Hirose](#) manufacturer:

Other Similar products are found below :

[M8196914-08](#) [768211-2](#) [8-59558-2](#) [91018-1](#) [1-21048-0](#) [1-21048-6](#) [1322](#) [RM-TP](#) [15315247](#) [15313892](#) [15350707](#) [1579018-4](#) [1976593-3](#) [2-1579008-4](#) [229694-7](#) [231106-1](#) [241469](#) [91040-7](#) [965004-000](#) [965069-000](#) [1738219-1](#) [ET-JL05-16](#) [FG 0300 146 3000](#) [FIT-6](#) [2-1579007-9](#) [231879-1](#) [312138-3](#) [313813-1](#) [RJ11FODE](#) [356-162](#) [M8196914-10](#) [483249-1](#) [313806-1](#) [356-121](#) [38039-7-0SN](#) [CAT-RE-169-01](#) [DCF.91.162.2LT](#) [DCF.92.090.3LT](#) [DF-SD1RE-MD](#) [51-943.9](#) [0405-0337AS](#) [1055543-1](#) [1-1579028-0](#) [TC-1600-21](#) [5991111610](#) [5-525450-1](#) [548551-1](#) [300006](#) [312154-1](#) [126117-1](#)