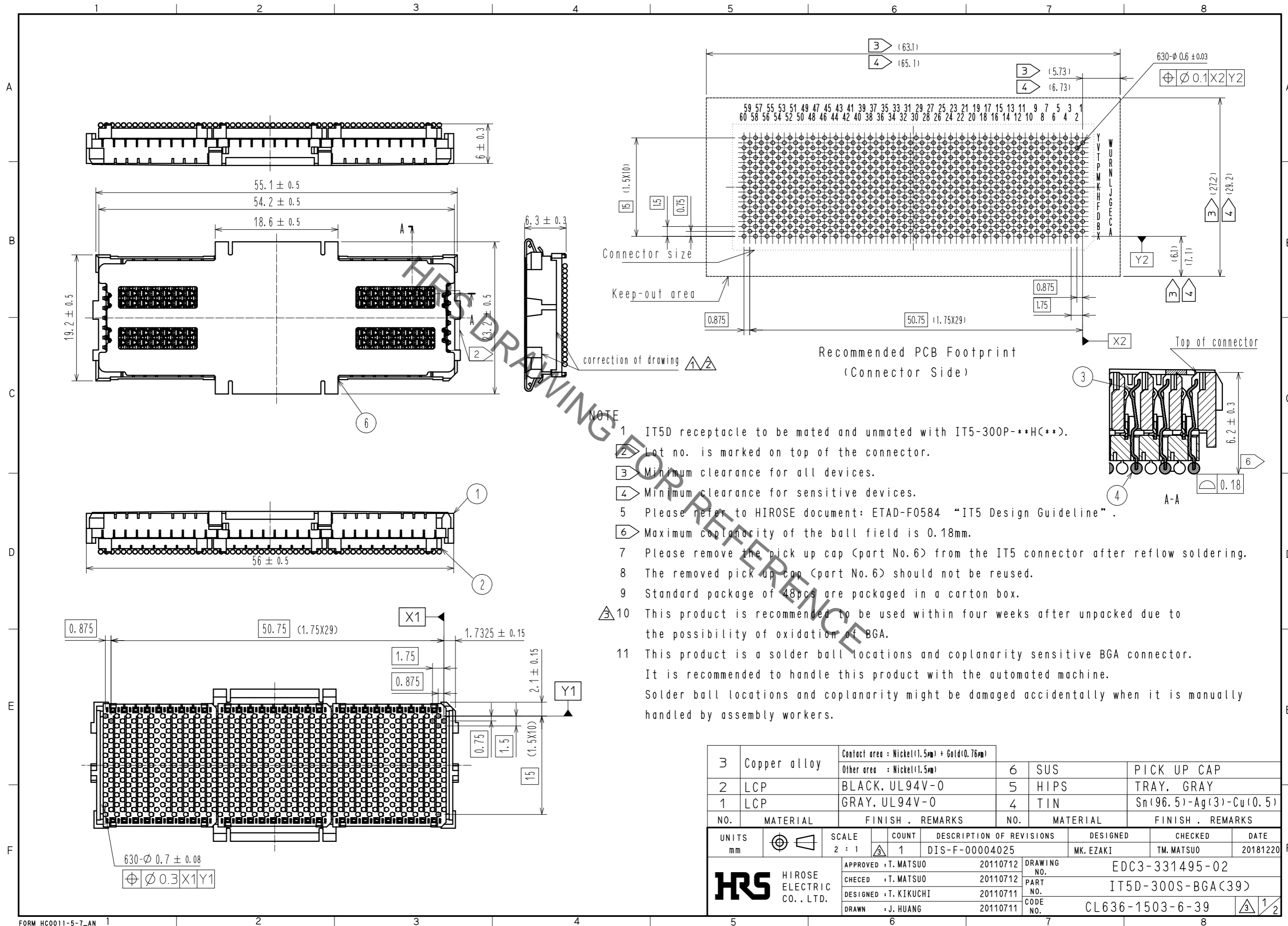


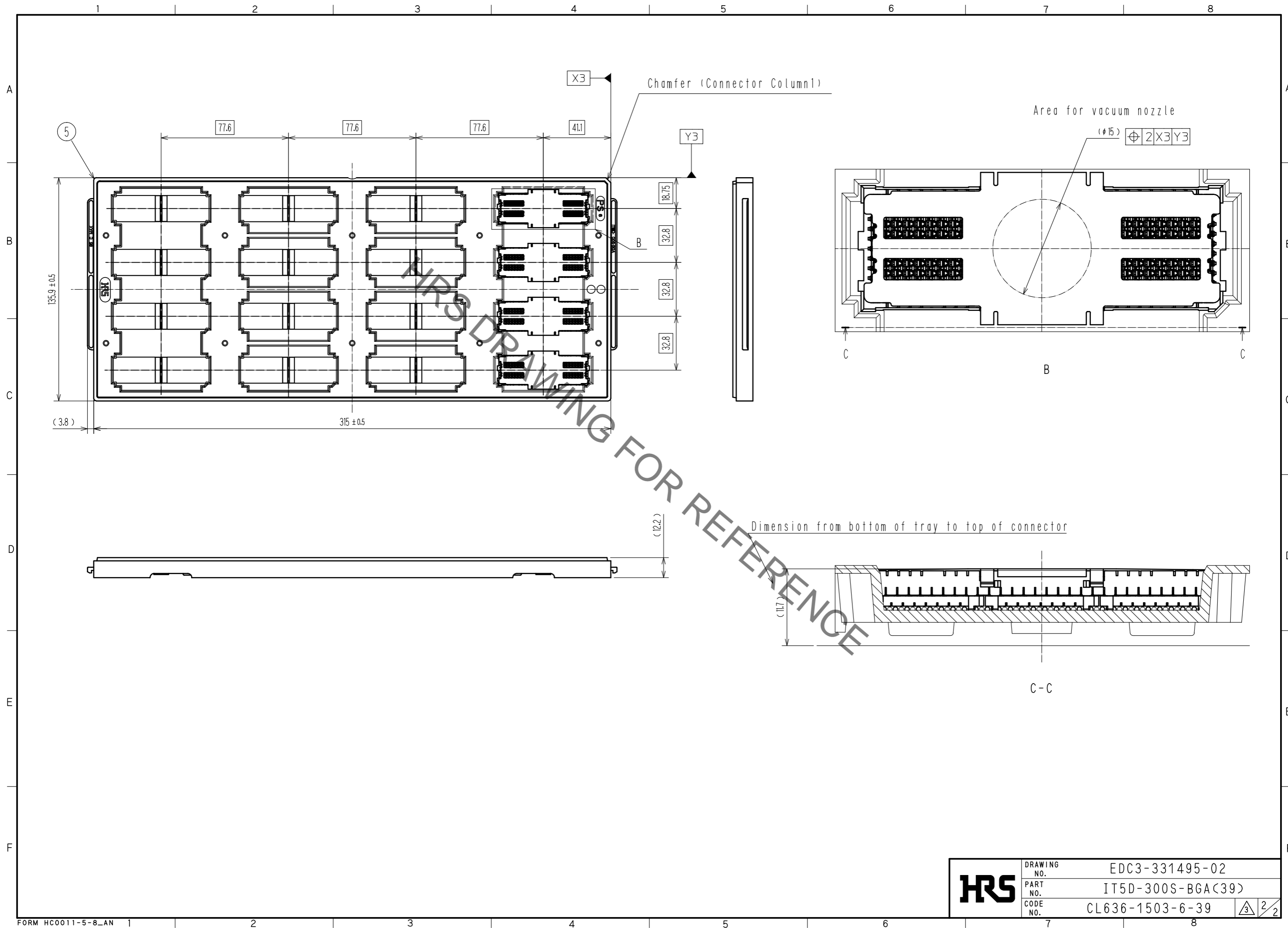
Aug.1.2021 Copyright 2021 HIROSE ELECTRIC CO., LTD. All Rights Reserved.
 In case of consideration for using Automotive equipment / device which demand high reliability, kindly contact our sales window correspondents.



- NOTE
- 1 IT5D receptacle to be mated and unmated with IT5-300P-***H(**).
 - 2 Lot no. is marked on top of the connector.
 - 3 Minimum clearance for all devices.
 - 4 Minimum clearance for sensitive devices.
 - 5 Please refer to HIROSE document: ETAD-F0584 "IT5 Design Guideline".
 - 6 Maximum coplanarity of the ball field is 0.18mm.
 - 7 Please remove the pick up cap (part No.6) from the IT5 connector after reflow soldering.
 - 8 The removed pick up cap (part No.6) should not be reused.
 - 9 Standard package of 48pcs are packaged in a carton box.
 - 10 This product is recommended to be used within four weeks after unpacked due to the possibility of oxidation of BGA.
 - 11 This product is a solder ball locations and coplanarity sensitive BGA connector. It is recommended to handle this product with the automated machine. Solder ball locations and coplanarity might be damaged accidentally when it is manually handled by assembly workers.

3	Copper alloy	Contact area : Nickel(1.5µm) + Gold(0.76µm)	6	SUS	PICK UP CAP
		Other area : Nickel(1.5µm)	5	HIPS	TRAY, GRAY
2	LCP	BLACK, UL94V-0	4	TIN	Sn(96.5)-Ag(3)-Cu(0.5)
1	LCP	GRAY, UL94V-0			
NO.	MATERIAL	FINISH . REMARKS	NO.	MATERIAL	FINISH . REMARKS
UNITS mm		SCALE 2 : 1	COUNT 1	DESCRIPTION OF REVISIONS DIS-F-00004025	
DESIGNED MK. EZAKI		CHECKED TM. MATSUO		DATE 20181220	
APPROVED : T. MATSUO 20110712			DRAWING NO. EDC3-331495-02		
CHECED : T. MATSUO 20110712			PART NO. IT5D-300S-BGA(39)		
DESIGNED : T. KIKUCHI 20110711			CODE NO. CL636-1503-6-39		
DRAWN : J. HUANG 20110711			1/2		

Aug.1.2021 Copyright 2021 HIROSE ELECTRIC CO., LTD. All Rights Reserved.
 In case of consideration for using Automotive equipment / device which demand high reliability, kindly contact our sales window correspondents.



HRS	DRAWING NO.	EDC3-331495-02
	PART NO.	IT5D-300S-BGA(39)
	CODE NO.	CL636-1503-6-39
		3/2

X-ON Electronics

Largest Supplier of Electrical and Electronic Components

Click to view similar products for [Board to Board & Mezzanine Connectors](#) category:

Click to view products by [Hirose](#) manufacturer:

Other Similar products are found below :

[589158040000018](#) [MDF7C-18P-2.54DSA\(55\)](#) [FCN-230C068-11](#) [FCN-268F012-G/BD](#) [FCN-268F036-G/BD](#) [FCN-268M012-G/0D](#) [FCN-268M024-G/1D](#) [FCN-723J004/1](#) [MIS-048-01-F-D-DP-K](#) [832-10-034-10-001000](#) [FX4C-80S-1.27DSA](#) [FCN-214Q030-G/0](#) [FCN-234P048-G/0](#) [FCN-235D050-G/C](#) [210-93-314-41-105000](#) [2-22603-0](#) [MDF7-40DP-2.54DSA\(55\)](#) [AXG720047](#) [MIT-114-03-F-D-K](#) [55323-1519](#) [DF33-2P-3.3DSA\(24\)](#) [YFT-20-05-H-03-SB-K](#) [503308-3040](#) [026-6203-PDB](#) [027-6203-PDB](#) [069159702701000](#) [10123981-102LF](#) [101A10019X](#) [55650-0588-C](#) [68682-310LF](#) [68684-306](#) [75140-7012](#) [87471-650](#) [YTW-30-07-H-Q-410-140](#) [FCN-268F024-G0D](#) [10124054-515LF](#) [68685-603](#) [8-1616154-3](#) [MIS-019-01-F-D](#) [FCN-268M024-G/3D](#) [FCN-268M036-G/BD](#) [20021832-06016C1LF](#) [KX15-20KLDL-E1000E](#) [AXE810124](#) [FCN-214J100-G/0](#) [FCN-230C068-E/S](#) [AXE812124](#) [AXE816124](#) [AXE720127](#) [354184](#)