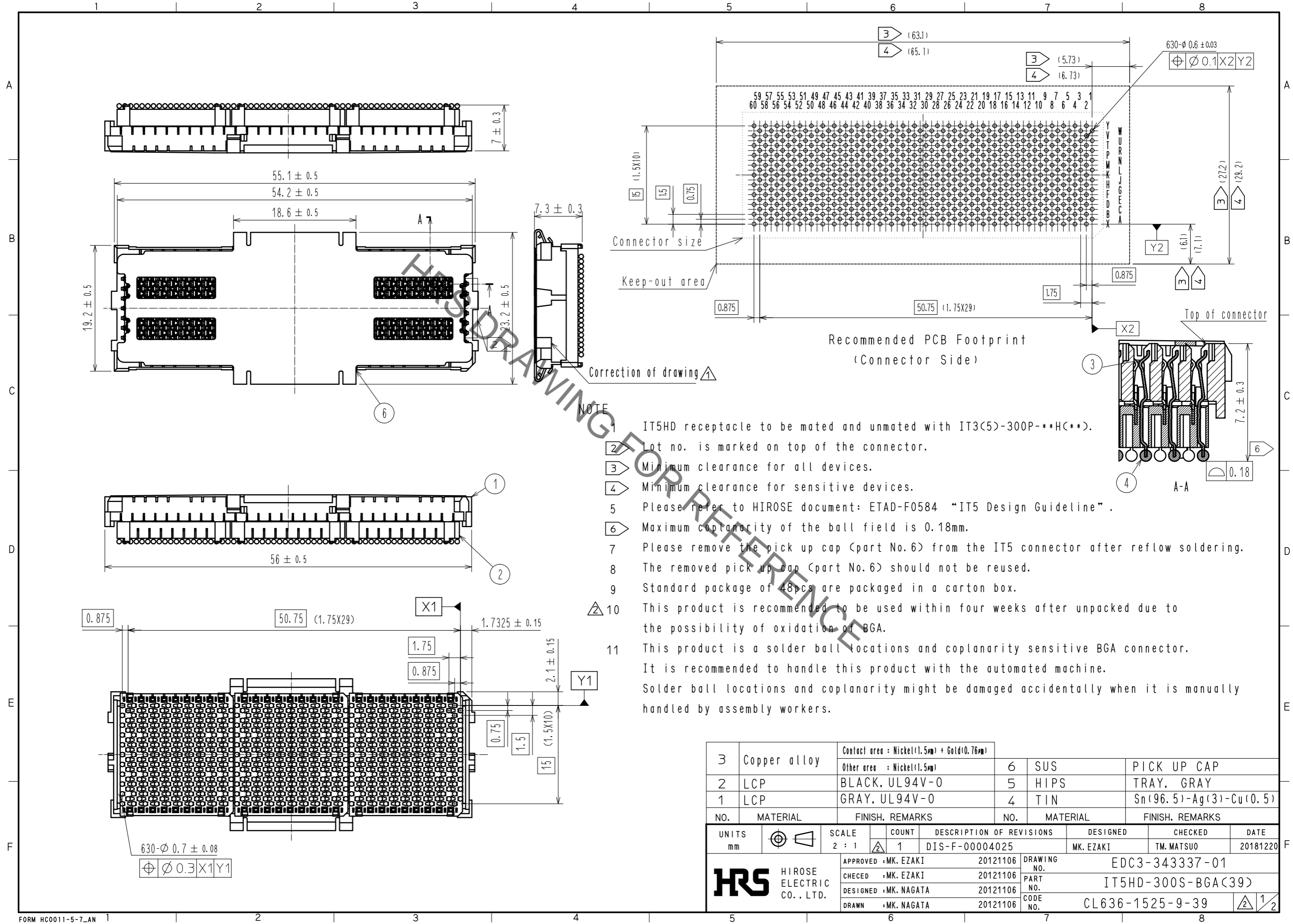


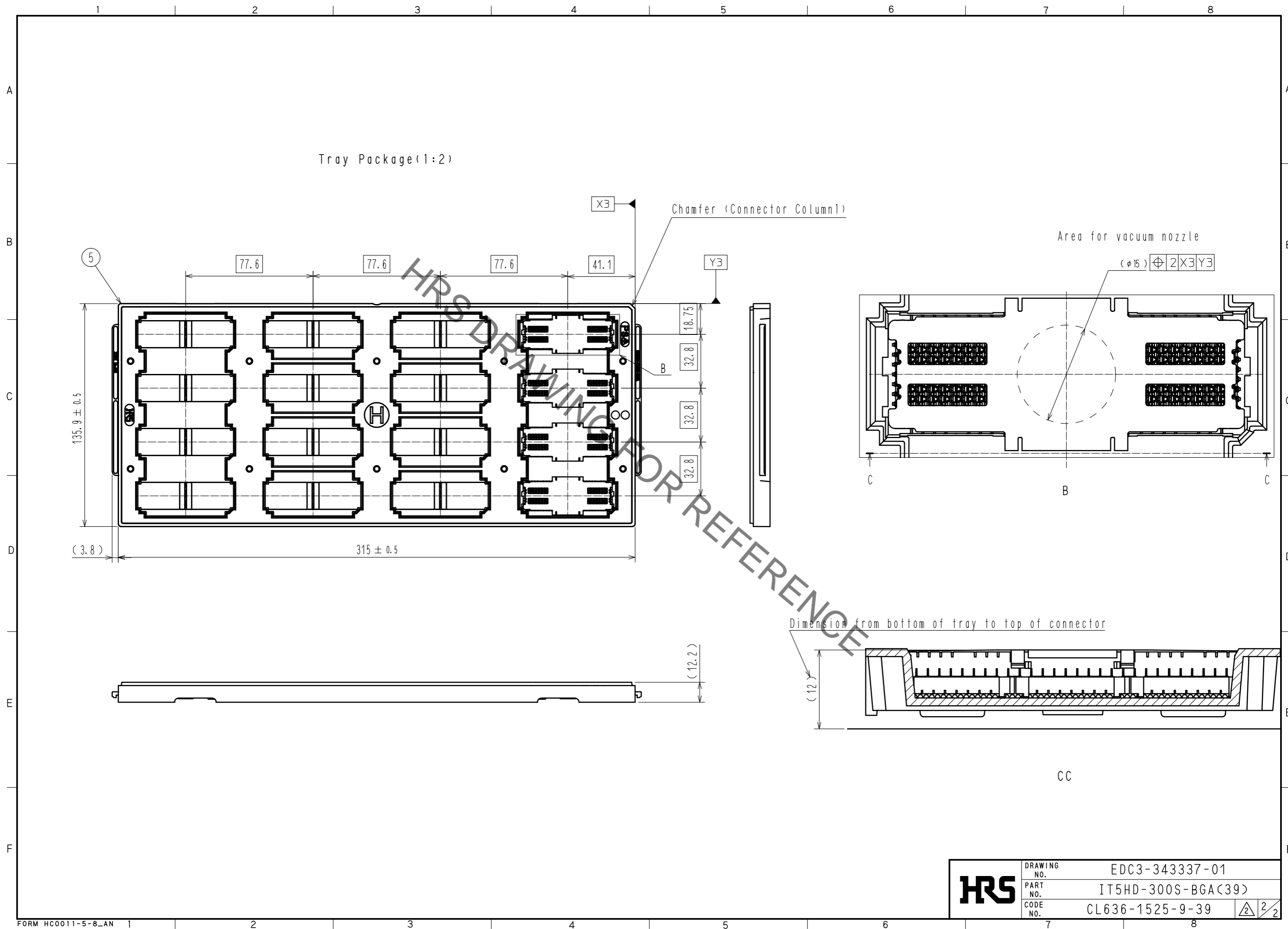
Sep.1.2021 Copyright 2021 HIROSE ELECTRIC CO., LTD. All Rights Reserved.
In case of consideration for using Automotive equipment / device which demand high reliability, kindly contact our sales window correspondents.



- NOTE
- 1 IT5HD receptacle to be mated and unmated with IT3(5)-300P-**H(**).
 - 2 Lot no. is marked on top of the connector.
 - 3 Minimum clearance for all devices.
 - 4 Minimum clearance for sensitive devices.
 - 5 Please refer to HIROSE document: ETAD-F0584 "IT5 Design Guideline".
 - 6 Maximum coplanarity of the ball field is 0.18mm.
 - 7 Please remove the pick up cap (part No.6) from the IT5 connector after reflow soldering.
 - 8 The removed pick up cap (part No.6) should not be reused.
 - 9 Standard package of 48pcs are packaged in a carton box.
 - 10 This product is recommended to be used within four weeks after unpacked due to the possibility of oxidation of BGA.
 - 11 This product is a solder ball locations and coplanarity sensitive BGA connector. It is recommended to handle this product with the automated machine. Solder ball locations and coplanarity might be damaged accidentally when it is manually handled by assembly workers.

3	Copper alloy	Contact area : Nickel(1.5μm) + Gold(0.76μm)	6	SUS	PICK UP CAP
		Other area : Nickel(1.5μm)	5	HIPS	TRAY, GRAY
2	LCP	BLACK, UL94V-0	4	TIN	Sn(96.5)-Ag(3)-Cu(0.5)
1	LCP	GRAY, UL94V-0			
NO.	MATERIAL	FINISH. REMARKS	NO.	MATERIAL	FINISH. REMARKS
UNITS	mm	SCALE	2 : 1	COUNT	1
DESCRIPTION OF REVISIONS		DESIGNED	DATE		
DIS-F-00004025		MK. EZAKI	20181220		
APPROVED : MK. EZAKI		20121106	DRAWING NO.		
CHECKED : MK. EZAKI		20121106	EDC3-343337-01		
DESIGNED : MK. NAGATA		20121106	PART NO.		
DRAWN : MK. NAGATA		20121106	IT5HD-300S-BGA(39)		
			CODE NO.		
			CL636-1525-9-39		
			1/2		

Sep.1.2021 Copyright 2021 HIROSE ELECTRIC CO., LTD. All Rights Reserved.
 In case of consideration for using Automotive equipment / device which demand high reliability, kindly contact our sales window correspondents.



HRS	DRAWING NO.	EDC3-343337-01
	PART NO.	IT5HD-300S-BGA(39)
	CODE NO.	CL636-1525-9-39
		$\frac{2}{2}$

X-ON Electronics

Largest Supplier of Electrical and Electronic Components

Click to view similar products for [Board to Board & Mezzanine Connectors](#) category:

Click to view products by [Hirose](#) manufacturer:

Other Similar products are found below :

[589158040000018](#) [MDF7C-18P-2.54DSA\(55\)](#) [FCN-230C068-11](#) [FCN-268F012-G/BD](#) [FCN-268F036-G/BD](#) [FCN-268M012-G/0D](#) [FCN-268M024-G/1D](#) [FCN-723J004/1](#) [MIS-048-01-F-D-DP-K](#) [832-10-034-10-001000](#) [FX4C-80S-1.27DSA](#) [FCN-214Q030-G/0](#) [FCN-234P048-G/0](#) [FCN-235D050-G/C](#) [210-93-314-41-105000](#) [2-22603-0](#) [MDF7-40DP-2.54DSA\(55\)](#) [AXG720047](#) [MIT-114-03-F-D-K](#) [55323-1519](#) [DF33-2P-3.3DSA\(24\)](#) [YFT-20-05-H-03-SB-K](#) [503308-3040](#) [026-6203-PDB](#) [027-6203-PDB](#) [069159702701000](#) [10123981-102LF](#) [101A10019X](#) [55650-0588-C](#) [68682-310LF](#) [68684-306](#) [75140-7012](#) [87471-650](#) [YTW-30-07-H-Q-410-140](#) [FCN-268F024-G0D](#) [10124054-515LF](#) [68685-603](#) [8-1616154-3](#) [MIS-019-01-F-D](#) [FCN-268M024-G/3D](#) [FCN-268M036-G/BD](#) [20021832-06016C1LF](#) [KX15-20KLDL-E1000E](#) [AXE810124](#) [FCN-214J100-G/0](#) [FCN-230C068-E/S](#) [AXE812124](#) [AXE816124](#) [AXE720127](#) [354184](#)