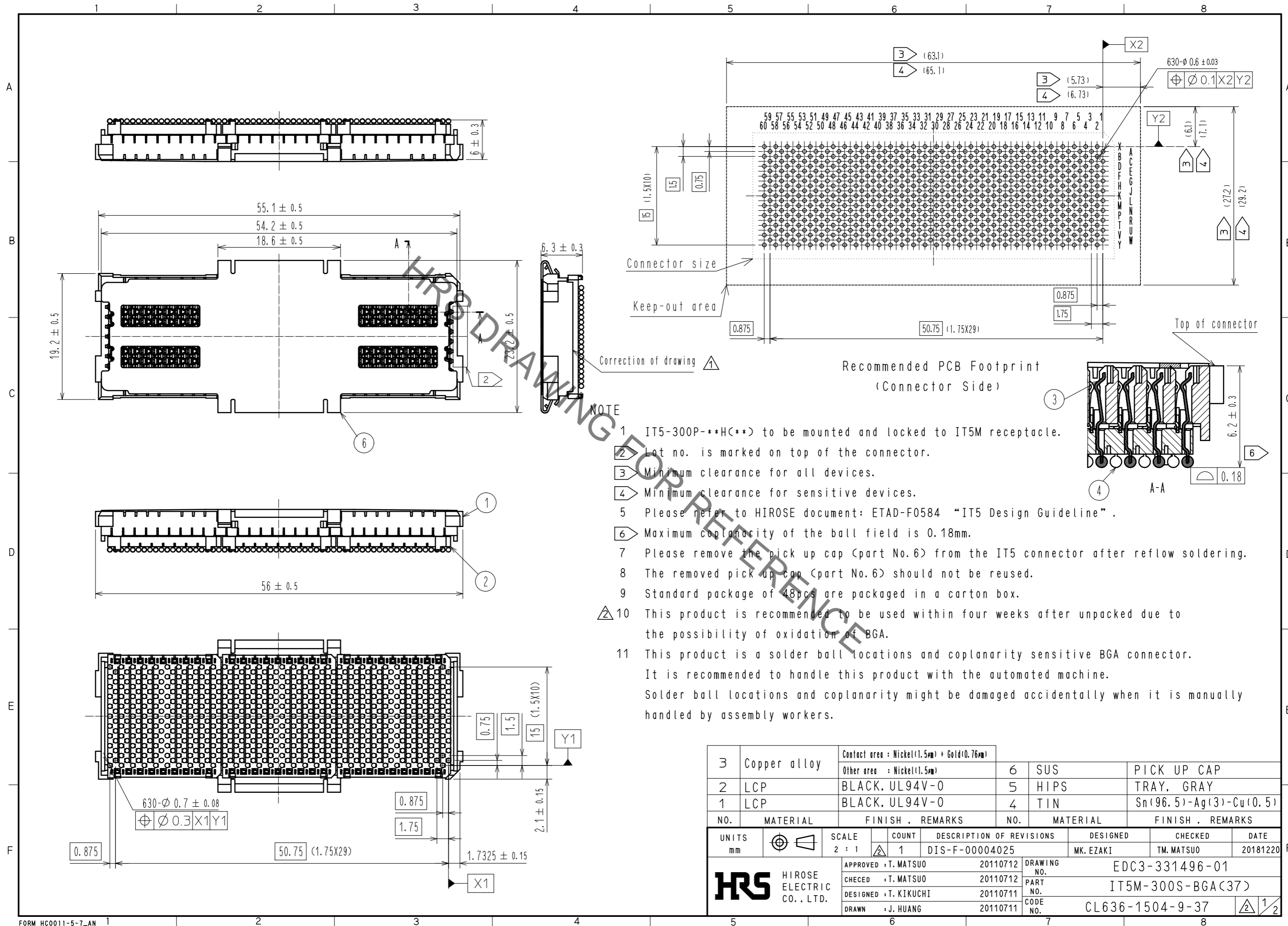


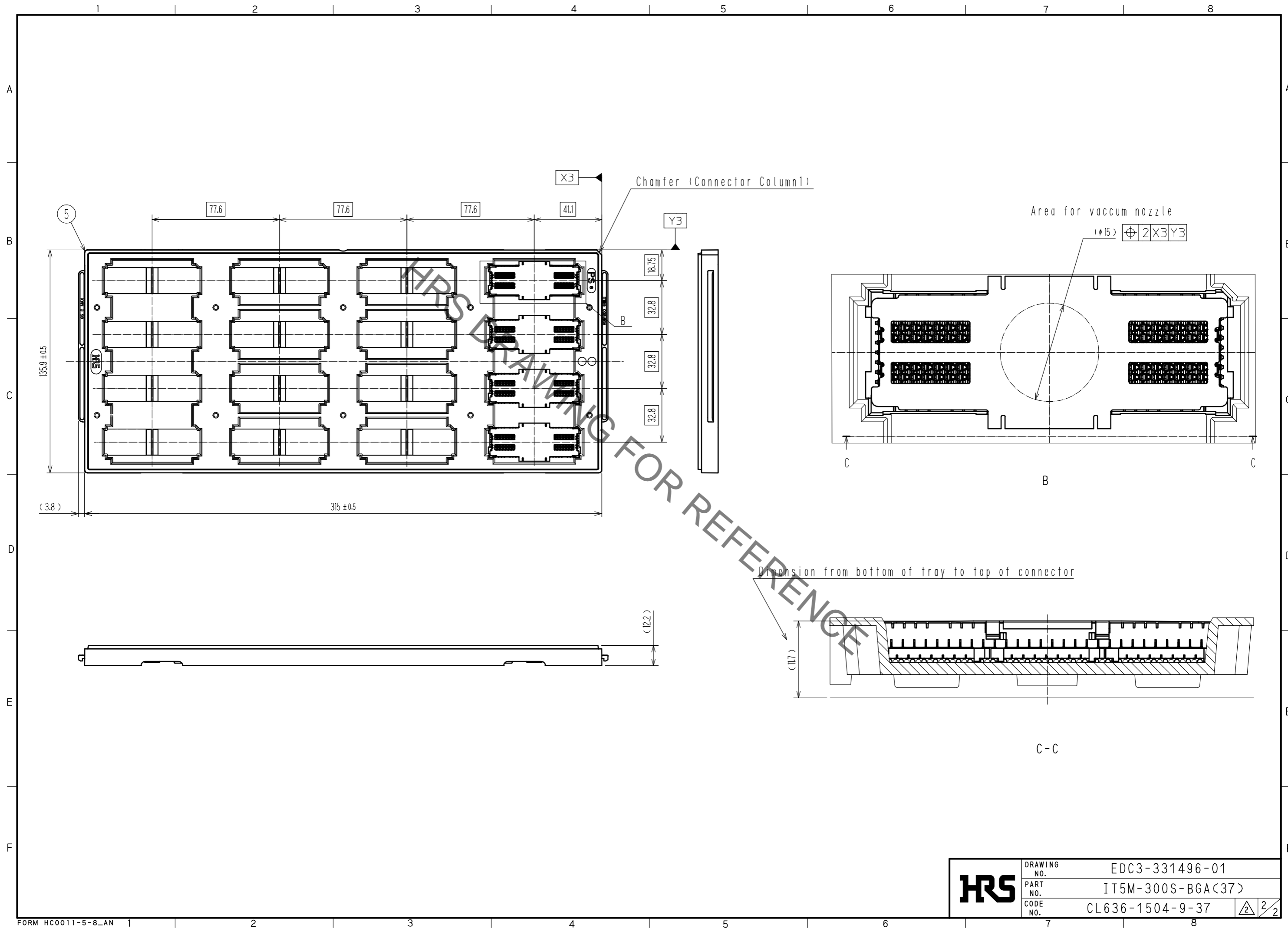
Sep.1.2021 Copyright 2021 HIROSE ELECTRIC CO., LTD. All Rights Reserved.  
In case of consideration for using Automotive equipment / device which demand high reliability, kindly contact our sales window correspondents.



- NOTE
- 1 IT5-300P-\*\*H(\*\*) to be mounted and locked to IT5M receptacle.
  - 2 Lot no. is marked on top of the connector.
  - 3 Minimum clearance for all devices.
  - 4 Minimum clearance for sensitive devices.
  - 5 Please refer to HIROSE document: ETAD-F0584 "IT5 Design Guideline".
  - 6 Maximum coplanarity of the ball field is 0.18mm.
  - 7 Please remove the pick up cap (part No.6) from the IT5 connector after reflow soldering.
  - 8 The removed pick up cap (part No.6) should not be reused.
  - 9 Standard package of 48pcs are packaged in a carton box.
  - 10 This product is recommended to be used within four weeks after unpacked due to the possibility of oxidation of BGA.
  - 11 This product is a solder ball locations and coplanarity sensitive BGA connector. It is recommended to handle this product with the automated machine. Solder ball locations and coplanarity might be damaged accidentally when it is manually handled by assembly workers.

3	Copper alloy	Contact area : Nickel(1.5μm) + Gold(0.76μm)	6	SUS	PICK UP CAP			
		Other area : Nickel(1.5μm)	5	HIPS	TRAY, GRAY			
2	LCP	BLACK, UL94V-0	4	TIN	Sn(96.5)-Ag(3)-Cu(0.5)			
1	LCP	BLACK, UL94V-0						
NO.	MATERIAL	FINISH . REMARKS	NO.	MATERIAL	FINISH . REMARKS			
UNITS		SCALE	COUNT	DESCRIPTION OF REVISIONS	DESIGNED	CHECKED	DATE	
mm		2 : 1		1	DIS-F-00004025	MK. EZAKI	TM. MATSUO	20181220
<b>HRS</b> HIROSE ELECTRIC CO., LTD.		APPROVED : T. MATSUO	20110712	DRAWING NO. EDC3-331496-01				
		CHECED : T. MATSUO	20110712	PART NO. IT5M-300S-BGA(37)				
		DESIGNED : T. KIKUCHI	20110711	CODE NO. CL636-1504-9-37				
		DRAWN : J. HUANG	20110711			1/2		

Sep.1.2021 Copyright 2021 HIROSE ELECTRIC CO., LTD. All Rights Reserved.  
 In case of consideration for using Automotive equipment / device which demand high reliability, kindly contact our sales window correspondents.



<b>HRS</b>	DRAWING NO.	EDC3-331496-01
	PART NO.	IT5M-300S-BGA(37)
	CODE NO.	CL636-1504-9-37
		$\frac{2}{2}$

## X-ON Electronics

Largest Supplier of Electrical and Electronic Components

*Click to view similar products for [Board to Board & Mezzanine Connectors](#) category:*

*Click to view products by [Hirose](#) manufacturer:*

Other Similar products are found below :

[589158040000018](#) [MDF7C-18P-2.54DSA\(55\)](#) [FCN-230C068-11](#) [FCN-268F012-G/BD](#) [FCN-268F036-G/BD](#) [FCN-268M012-G/0D](#) [FCN-268M024-G/1D](#) [FCN-723J004/1](#) [MIS-048-01-F-D-DP-K](#) [832-10-034-10-001000](#) [FX4C-80S-1.27DSA](#) [FCN-214Q030-G/0](#) [FCN-234P048-G/0](#) [FCN-235D050-G/C](#) [210-93-314-41-105000](#) [2-22603-0](#) [MDF7-40DP-2.54DSA\(55\)](#) [AXG720047](#) [MIT-114-03-F-D-K](#) [55323-1519](#) [DF33-2P-3.3DSA\(24\)](#) [YFT-20-05-H-03-SB-K](#) [503308-3040](#) [026-6203-PDB](#) [027-6203-PDB](#) [069159702701000](#) [10123981-102LF](#) [101A10019X](#) [55650-0588-C](#) [68682-310LF](#) [68684-306](#) [75140-7012](#) [87471-650](#) [YTW-30-07-H-Q-410-140](#) [FCN-268F024-G0D](#) [10124054-515LF](#) [68685-603](#) [8-1616154-3](#) [MIS-019-01-F-D](#) [FCN-268M024-G/3D](#) [FCN-268M036-G/BD](#) [20021832-06016C1LF](#) [KX15-20KLDL-E1000E](#) [AXE810124](#) [FCN-214J100-G/0](#) [FCN-230C068-E/S](#) [AXE812124](#) [AXE816124](#) [AXE720127](#) [354184](#)