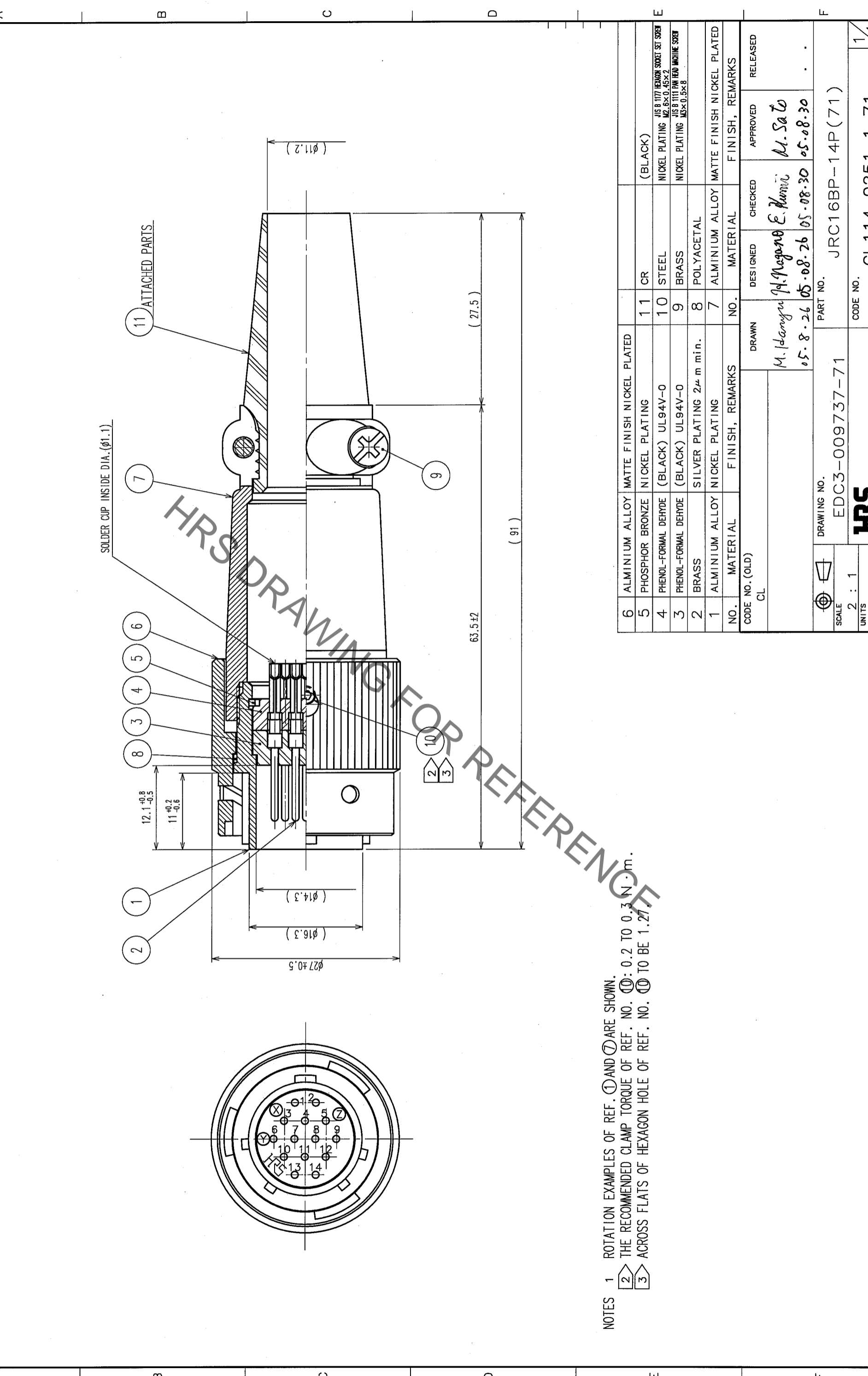


COUNT	DESCRIPTION OF REVISIONS	BY	CHKD	DATE	COUNT	DESCRIPTION OF REVISIONS	BY	CHKD	DATE
△					△				
△					△				
△					△				

COUNT	DESCRIPTION OF REVISIONS	BY	CHKD	DATE	COUNT	DESCRIPTION OF REVISIONS	BY	CHKD	DATE
△					△				
△					△				
△					△				



NOTES  
 1 ROTATION EXAMPLES OF REF. ① AND ② ARE SHOWN.  
 2 THE RECOMMENDED CLAMP TORQUE OF REF. NO. ⑩: 0.2 TO 0.3 N·m.  
 3 ACROSS FLATS OF HEXAGON HOLE OF REF. NO. ⑩ TO BE 1.27mm.

NO.	MATERIAL	FINISH, REMARKS	NO.	MATERIAL	FINISH, REMARKS
6	ALUMINIUM ALLOY	MATTE FINISH NICKEL PLATED	11	CR	(BLACK)
5	PHOSPHOR BRONZE	NICKEL PLATING	10	STEEL	NICKEL PLATING JIS B 1177 HEXAGON SOCKET SET SCREW M2.6x0.45x2
4	PHENOL-FORMAL DEHYDE	(BLACK) UL94V-0	9	BRASS	NICKEL PLATING JIS B 1111 PIN HEAD MACHINE SCREW M2x0.5x8
3	PHENOL-FORMAL DEHYDE	(BLACK) UL94V-0	8	POLYACETAL	
2	BRASS	SILVER PLATING 2μm min.	7	ALUMINIUM ALLOY	MATTE FINISH NICKEL PLATED
1	ALUMINIUM ALLOY	NICKEL PLATING			

CODE NO. (OLD)	CL	DRAWN	DESIGNED	CHECKED	APPROVED	RELEASED
		M. Hanyu	M. Nagano	E. Kumi	M. Sato	
		05.8.26	05.08.26	05.08.30	05.08.30	

DRAWING NO.	EDC3-009737-71	PART NO.	JRC16BP-14P(71)
SCALE	2 : 1	CODE NO.	CL114-0251-1-71
UNITS	mm		

TO	
R	

## X-ON Electronics

Largest Supplier of Electrical and Electronic Components

*Click to view similar products for [Standard Circular Connector](#) category:*

*Click to view products by [Hirose](#) manufacturer:*

Other Similar products are found below :

[5M2530B10P](#) [600259N006](#) [600273N007](#) [6134-336-13149](#) [6134-337-11149](#) [6134-337-2390](#) [6134-341-17149](#) [6280-4SG-516](#) [6280-7SG-3DC](#)  
[6290](#) [6291A](#) [66200A-10](#) [680-SMG](#) [681-PMG](#) [CXS3102A14S2P](#) [CXS3102A181S](#) [7251-6SG-300](#) [7271-6SG-300](#) [7282-3PG-300-CH3](#) [75-](#)  
[474014-05S](#) [75-474618-01S](#) [75-474618-04S](#) [799539-000](#) [MI8-SE](#) [805-005-07NF11-19PC](#) [805-005-07NF15-7PA](#) [8280-4PG-516](#) [8280-7PG-](#)  
[519](#) [8282-5PG-519](#) [836783-1](#) [MP-4102-25P-C](#) [862256-1](#) [864019-2](#) [866857-1](#) [867865-1](#) [PT01SP-14-18P](#) [PT08P-14-5S](#) [PTSF06SE-14-12S](#)  
[120-1833-000](#) [QCM019PC2DC012B](#) [1-2069279-1](#) [121583-0217](#) [121667-0020](#) [129591AU](#) [1000B BULK](#) [RD10A16-19-P6CS051/1](#)  
[RD10A20-31-P8CS051/1](#) [RD16A14-12-S6CS051/2](#) [1301240290](#) [1301240347](#) [1301860202](#)