



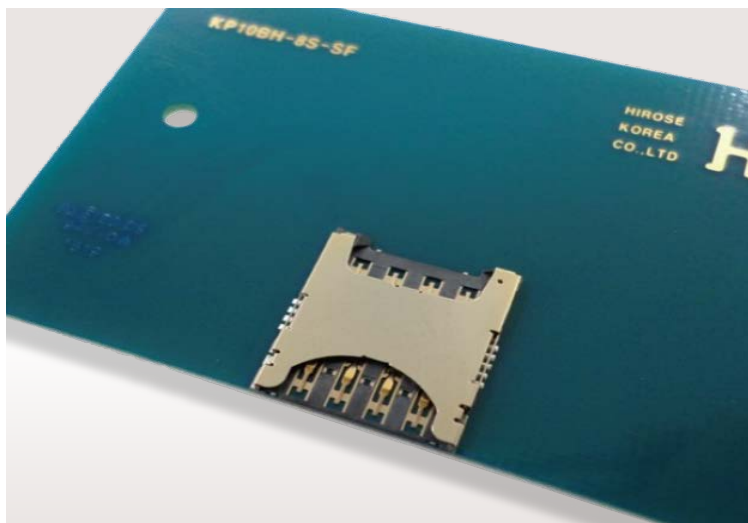
micro SIM



Push / Pull



Low Profile

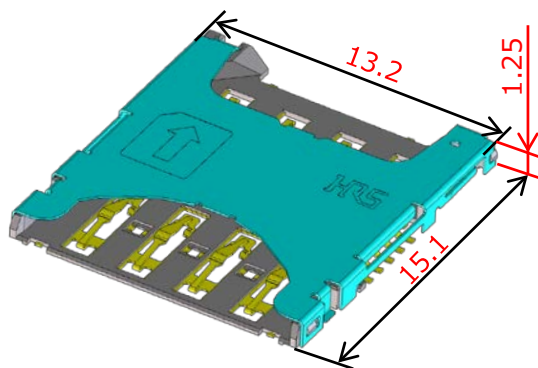


Features

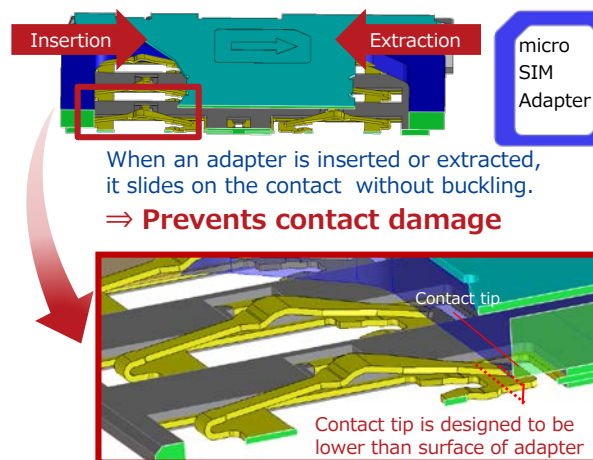
- 1 Low profile 1.25mm height
- 2 Reverse card insertion prevention design
- 3 Buckling prevention eliminates contact damage
- 4 Card detection switch (Normally open)
- 5 Easy inspection with exposed contact design

Dimensions

Unit : mm



Buckling prevention design



Slide Contact Design

Specifications

Contact Resistance	100mΩ Max. (Signal), 200mΩ Max. (Detection)
Withstanding Voltage	500V AC for 1 minute
Mold Resistance	1,000MΩ Min. (500V DC)
Rated Current	0.5A
Rated Voltage	10V AC
Operating Temperature	-30°C to +85°C
Mating cycles	5,000 times

- RoHS compliant, Halogen-free product\*
- \*This product satisfies halogen free requirements defined as 900ppm maximum chlorine, 900ppm maximum bromine, and 1500ppm maximum total of chlorine and bromine

※ Please contact Hirose's sales representative prior to adopting the products to in-vehicle devices.



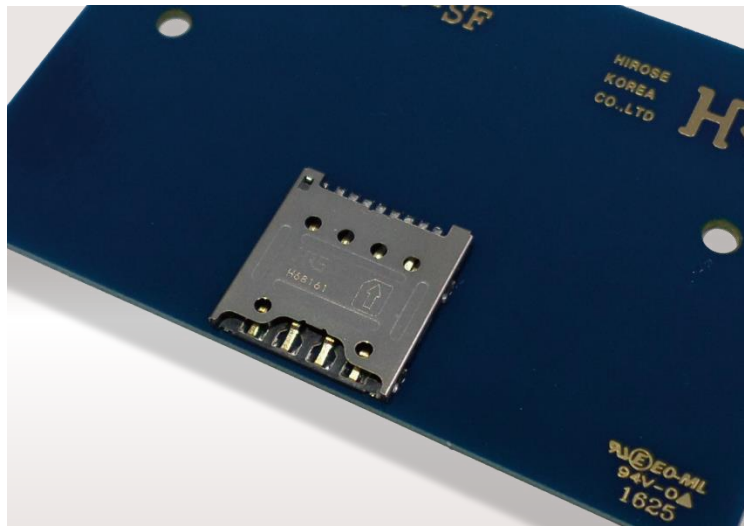
micro SIM



Push / Pull



Ultra Low Profile

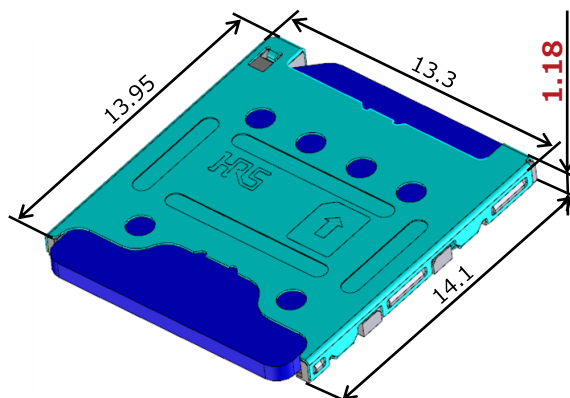


**Features**

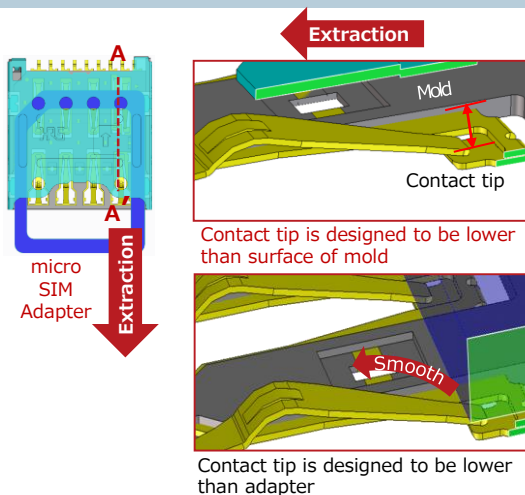
- 1 **Space saving with ultra low profile**
- 2 **Reverse card insertion prevention design**
- 3 **Buckling prevention design**
- 4 **Card detection switch (Normally Open)**
- 5 **Easy inspection with exposed contact design**

**Dimensions**

Unit : mm



**Buckling prevention design**



**When an adapter is inserted or extracted, it slides on the contact without buckling.**

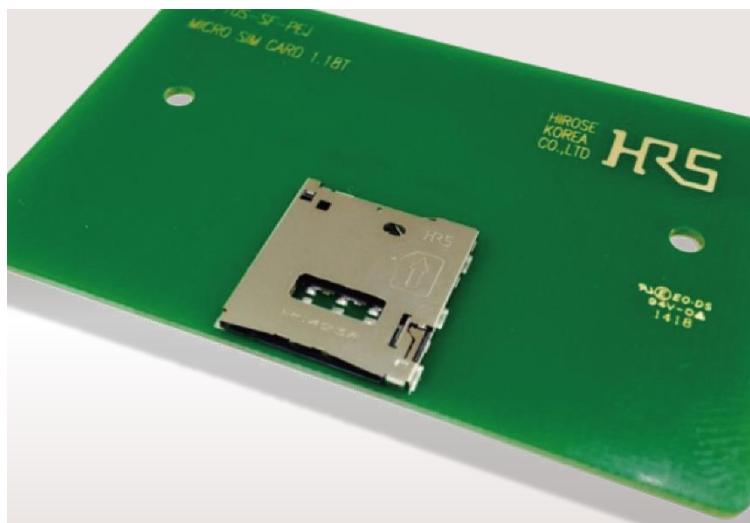
**Specifications**

Contact Resistance	100mΩ Max.
Withstanding Voltage	500V AC for 1 minute
Mold Resistance	1,000MΩ Min. (500V DC)
Rated Current	0.5A
Rated Voltage	10V AC
Operating Temperature	-30°C to +85°C
Mating cycles	5,000 times

• RoHS compliant, Halogen-free product\*

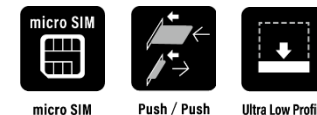
\*This product satisfies halogen free requirements defined as 900ppm maximum chlorine, 900ppm maximum bromine, and 1500ppm maximum total of chlorine and bromine

※ Please contact Hirose's sales representative prior to adopting the products to in-vehicle devices.



### Features

- 1 Ultra Low profile 1.18mm height
- 2 Reverse card insertion protection
- 3 Buckling prevention eliminates contact damage
- 4 Card detection switch (Normally Close)
- 5 Easy inspection with exposed contact design

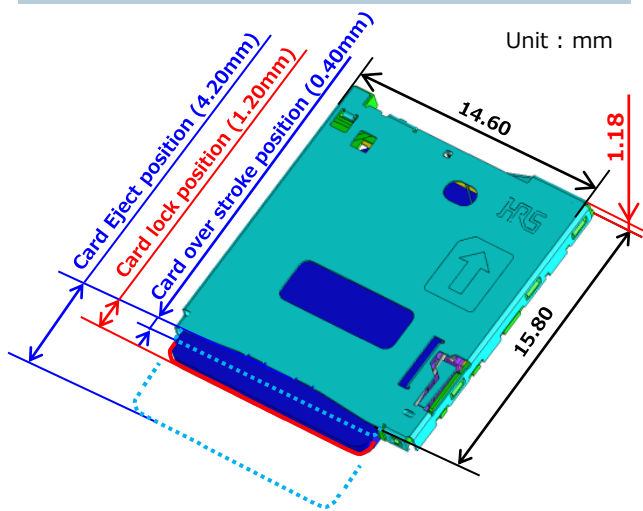


The world's lowest profile in its Class 1.18 mm\*

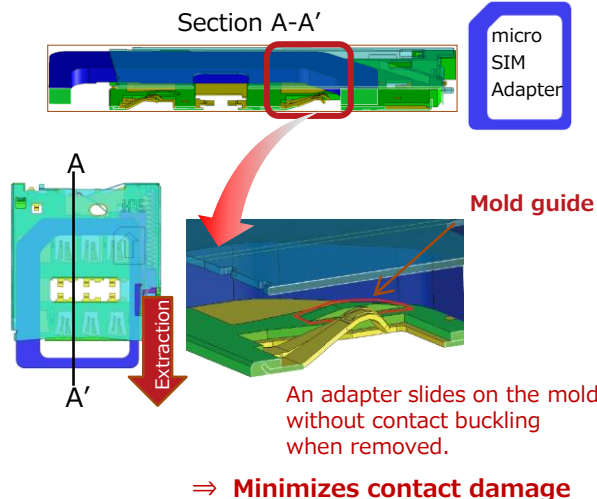
\* As push-push type micro SIM card connector as of Feb.2020

### Dimensions

Unit : mm



### Buckling prevention design



### Specifications

Contact Resistance	100mΩ Max.
Withstanding Voltage	500V AC for 1 minute
Mold Resistance	1,000MΩ Min. (500V DC)
Rated Current	0.5A
Rated Voltage	10V AC
Operating Temperature	-30°C to +85°C
Mating cycles	5,000 times

• RoHS compliant, Halogen-free product\*

\*This product satisfies halogen free requirements defined as 900ppm maximum chlorine, 900ppm maximum bromine, and 1500ppm maximum total of chlorine and bromine

※ Please contact Hirose's sales representative prior to adopting the products to in-vehicle devices.

## X-ON Electronics

Largest Supplier of Electrical and Electronic Components

*Click to view similar products for [Memory Card Connectors](#) category:*

*Click to view products by [Hirose](#) manufacturer:*

Other Similar products are found below :

[M21-033321-005](#) [6407-249V-25273P](#) [6407-249V-25343P](#) [6426-201-21343](#) [69.920.0553.0](#) [MCR60A-98D-2.54DSA\(70\)](#) [809180410000000](#)  
[DM3AT-SF-PEJM5\(41\)](#) [N7E50-7516PG-20-WF](#) [252-0144-000](#) [2041353-2](#) [308-DS1P0811-192](#) [HM2P09PDR360N9LF](#) [11327-001](#) [11327-002](#) [617230001](#) [95622-003LF](#) [N7E50-U516RB-50-SIN0005](#) [84648-056HLF](#) [68-580163-21S](#) [93-570123-08P](#) [125A-78C00](#) [CCM03-3109 B](#)  
[LFT](#) [MI21-50PD-SF\(91\)](#) [2309923-1](#) [61126-050CAHLF](#) [IC1GA-68PD-1.27DS-EJ\(72\)](#) [GTFP08432B1HR](#) [G85C11101152HHR](#)  
[G85D1160022HHR](#) [KP15TL-SF\(800\)](#) [KP10BH-8S-SF\(800\)](#) [SCE2MSDB76A121SN](#) [SCE2MSDZN76A121SN](#) [47309-2651](#) [47481-0001](#)  
[67799-0004](#) [91228-3006](#) [104168-1616](#) [104C-TAA1](#) [112I-TA01](#) [115S-ACA2](#) [115S-ACA3](#) [115S-BS00](#) [115S-BT00](#) [115V-AD00](#) [MCSP-Q1-08-A-SG-T/R](#) [119A-40A00-R02](#) [5008730816](#) [503960-0695](#)