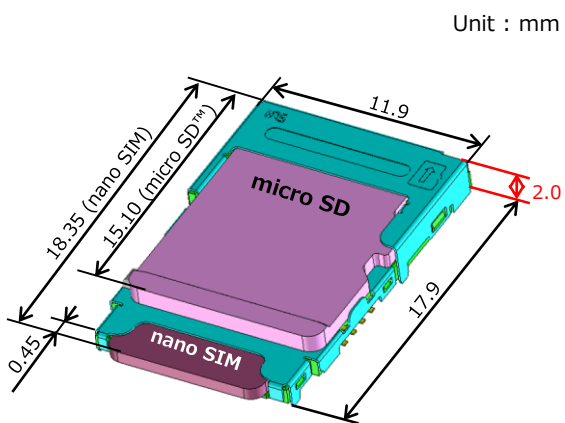


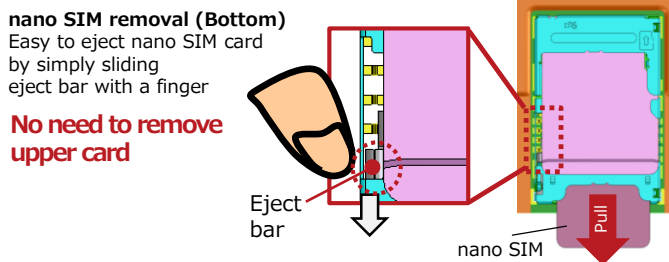
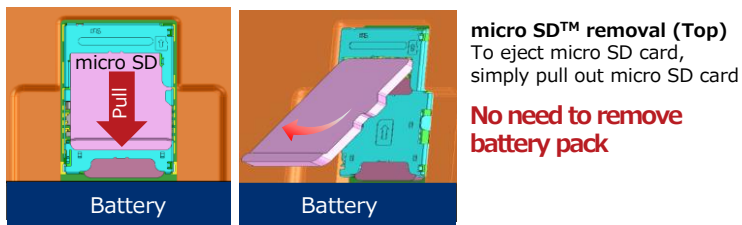
Features

- 1 Combo socket for nano SIM & micro SD™ cards produces a space saving design (Top slot : micro SD card, bottom slot : nano SIM card)
- 2 User friendly card removal design with top and bottom slot
- 3 Easy inspection with exposed contact design
- 4 User-friendly reverse card insertion prevention
- 5 Card detection switch for microSD and nano SIM cards

Dimensions



User friendly card removal design



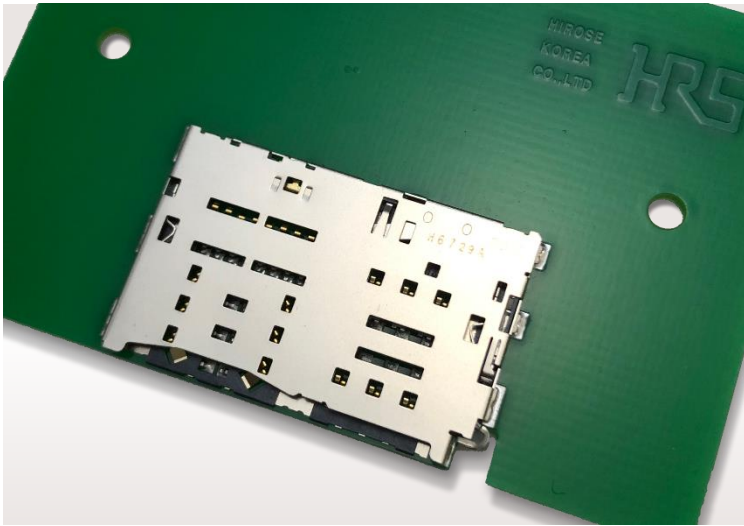
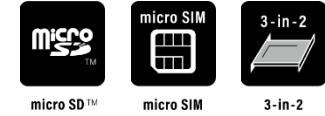
Specifications

Contact Resistance	100mΩ Max.
Withstanding Voltage	500V AC for 1 minute
Mold Resistance	1,000MΩ Min. (500V DC)
Rated Current	0.5A
Rated Voltage	10V AC
Operating Temperature	-30℃ to +85℃
Mating cycles	10,000 times (micro SD) 5,000 times (nano Sim)

• RoHS compliant, Halogen-free product*

*This product satisfies halogen free requirements defined as 900ppm maximum chlorine, 900ppm maximum bromine, and 1500ppm maximum total of chlorine and bromine

※ Please contact Hirose's sales representative prior to adopting the products to in-vehicle devices.



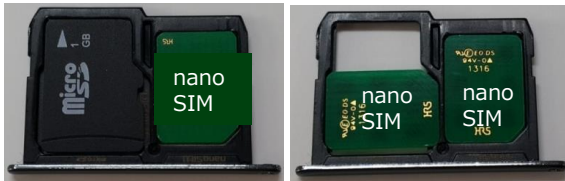
Features

- 1 Easy to remove tray with eject pin
- 2 3 in 2 hybrid design provides various usage patterns.
- 3 Buckling prevention eliminates contact damage
- 4 Enhanced durability with ample eject bar thickness (40N)
- 5 Card detection switch

Dual card use design

Combo Type Dual Sim card Type

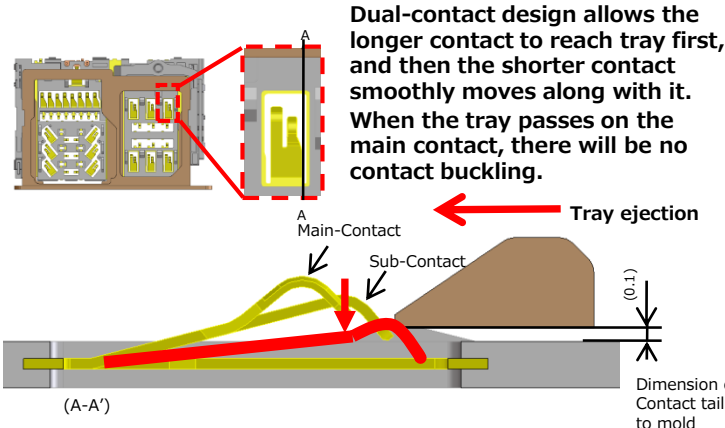
micro SD™ + nano SIM nano SIM × 2



⇒ Can be use in 2 cards patterns

*Note : Tray is not included and should be prepared by customers.

Buckling prevention design



Specifications

Contact Resistance	100mΩ Max.
Withstanding Voltage	500V AC for 1 minute
Mold Resistance	1000MΩ Min. (500V DC)
Rated Current	0.5A
Rated Voltage	10V AC
Operating Temperature	-30°C to +85°C
Mating cycles	3,000 times

- RoHS compliant, Halogen-free product*
*This product satisfies halogen free requirements defined as 900ppm maximum chlorine, 900ppm maximum bromine, and 1500ppm maximum total of chlorine and bromine
- ※ Please contact Hirose's sales representative prior to adopting the products to in-vehicle devices.

X-ON Electronics

Largest Supplier of Electrical and Electronic Components

Click to view similar products for [Memory Card Connectors](#) category:

Click to view products by [Hirose](#) manufacturer:

Other Similar products are found below :

[M21-033321-005](#) [6407-249V-25273P](#) [6407-249V-25343P](#) [6426-201-21343](#) [69.920.0553.0](#) [MCR60A-98D-2.54DSA\(70\)](#) [809180410000000](#)
[DM3AT-SF-PEJM5\(41\)](#) [N7E50-7516PG-20-WF](#) [252-0144-000](#) [2041353-2](#) [308-DS1P0811-192](#) [HM2P09PDR360N9LF](#) [11327-001](#) [11327-002](#) [617230001](#) [95622-003LF](#) [N7E50-U516RB-50-SIN0005](#) [84648-056HLF](#) [68-580163-21S](#) [93-570123-08P](#) [125A-78C00](#) [CCM03-3109 B](#)
[LFT](#) [MI21-50PD-SF\(91\)](#) [2309923-1](#) [61126-050CAHLF](#) [IC1GA-68PD-1.27DS-EJ\(72\)](#) [GTFP08432B1HR](#) [G85C11101152HHR](#)
[G85D1160022HHR](#) [KP15TL-SF\(800\)](#) [KP10BH-8S-SF\(800\)](#) [SCE2MSDB76A121SN](#) [SCE2MSDZN76A121SN](#) [47309-2651](#) [47481-0001](#)
[67799-0004](#) [91228-3006](#) [104168-1616](#) [104C-TAA1](#) [112I-TA01](#) [115S-ACA2](#) [115S-ACA3](#) [115S-BS00](#) [115S-BT00](#) [115V-AD00](#) [MCSP-Q1-08-A-SG-T/R](#) [119A-40A00-R02](#) [5008730816](#) [503960-0695](#)