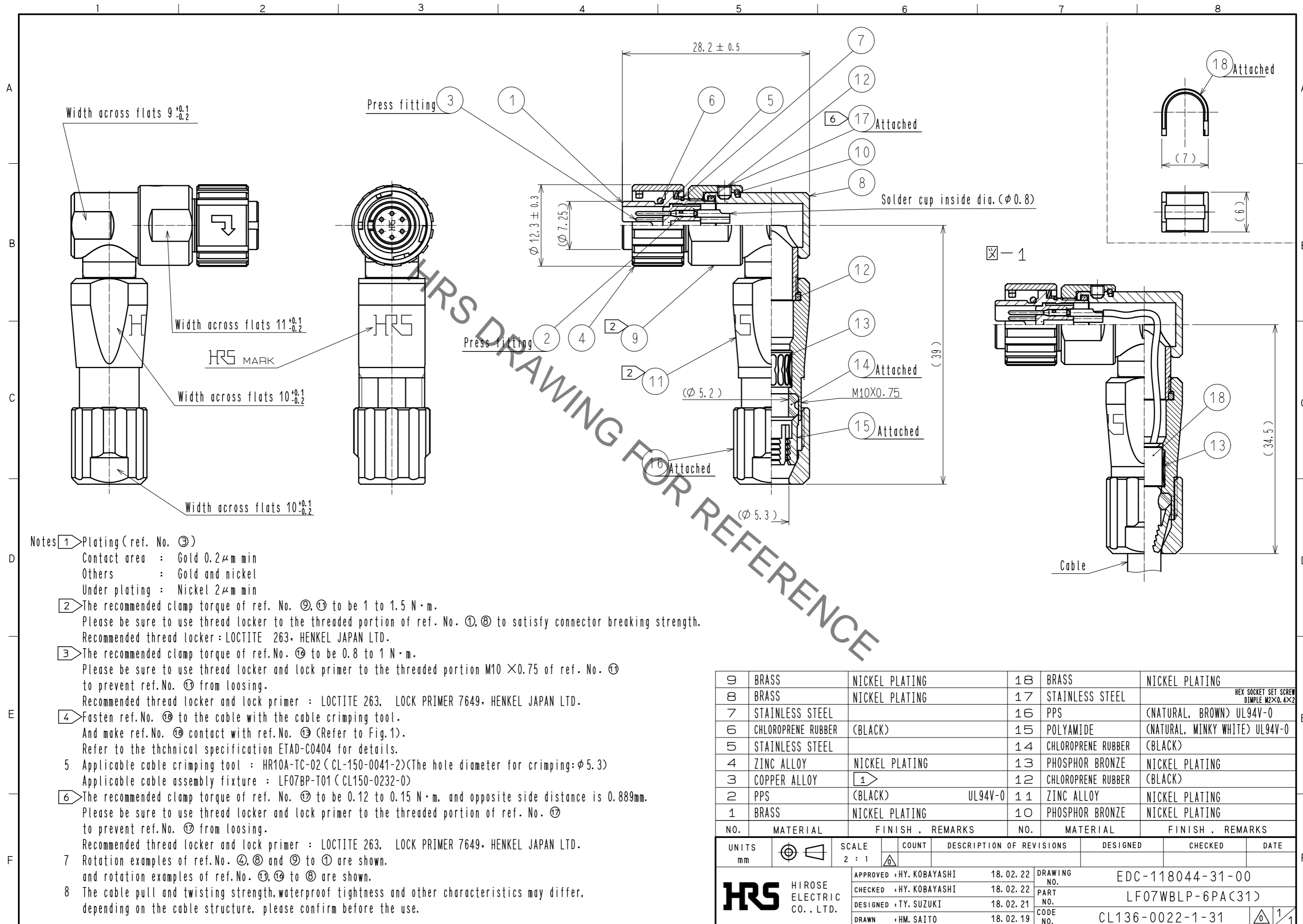


Sep.1.2021 Copyright 2021 HIROSE ELECTRIC CO., LTD. All Rights Reserved.  
In case of consideration for using Automotive equipment / device which demand high reliability, kindly contact our sales window correspondents.



- Notes
- ① Plating (ref. No. ③)  
 Contact area : Gold 0.2 μm min  
 Others : Gold and nickel  
 Under plating : Nickel 2 μm min
  - ② The recommended clamp torque of ref. No. ⑨, ⑩ to be 1 to 1.5 N·m.  
 Please be sure to use thread locker to the threaded portion of ref. No. ①, ⑧ to satisfy connector breaking strength.  
 Recommended thread locker : LOCTITE 263, HENKEL JAPAN LTD.
  - ③ The recommended clamp torque of ref. No. ⑬ to be 0.8 to 1 N·m.  
 Please be sure to use thread locker and lock primer to the threaded portion M10 × 0.75 of ref. No. ⑩  
 to prevent ref. No. ⑩ from loosening.  
 Recommended thread locker and lock primer : LOCTITE 263, LOCK PRIMER 7649, HENKEL JAPAN LTD.
  - ④ Fasten ref. No. ⑭ to the cable with the cable crimping tool.  
 And make ref. No. ⑭ contact with ref. No. ⑬ (Refer to Fig. 1).  
 Refer to the technical specification ETAD-C0404 for details.
  - ⑤ Applicable cable crimping tool : HR10A-TC-02 (CL-150-0041-2) (The hole diameter for crimping: φ5.3)  
 Applicable cable assembly fixture : LF07BP-T01 (CL150-0232-0)
  - ⑥ The recommended clamp torque of ref. No. ⑮ to be 0.12 to 0.15 N·m, and opposite side distance is 0.889mm.  
 Please be sure to use thread locker and lock primer to the threaded portion of ref. No. ⑮  
 to prevent ref. No. ⑮ from loosening.  
 Recommended thread locker and lock primer : LOCTITE 263, LOCK PRIMER 7649, HENKEL JAPAN LTD.
  - ⑦ Rotation examples of ref. No. ④, ⑧ and ⑨ to ① are shown.  
 and rotation examples of ref. No. ⑩, ⑬ to ⑧ are shown.
  - ⑧ The cable pull and twisting strength, waterproof tightness and other characteristics may differ,  
 depending on the cable structure, please confirm before the use.

9	BRASS	NICKEL PLATING	18	BRASS	NICKEL PLATING
8	BRASS	NICKEL PLATING	17	STAINLESS STEEL	HEX SOCKET SET SCREW DIMPLE M2×0.4×2
7	STAINLESS STEEL		16	PPS	(NATURAL, BROWN) UL94V-0
6	CHLOROPRENE RUBBER	(BLACK)	15	POLYAMIDE	(NATURAL, MINKY WHITE) UL94V-0
5	STAINLESS STEEL		14	CHLOROPRENE RUBBER	(BLACK)
4	ZINC ALLOY	NICKEL PLATING	13	PHOSPHOR BRONZE	NICKEL PLATING
3	COPPER ALLOY	①	12	CHLOROPRENE RUBBER	(BLACK)
2	PPS	(BLACK) UL94V-0	11	ZINC ALLOY	NICKEL PLATING
1	BRASS	NICKEL PLATING	10	PHOSPHOR BRONZE	NICKEL PLATING
NO.	MATERIAL	FINISH . REMARKS	NO.	MATERIAL	FINISH . REMARKS

UNITS	SCALE	COUNT	DESCRIPTION OF REVISIONS	DESIGNED	CHECKED	DATE
mm	2 : 1	△				
			APPROVED : HY. KOBAYASHI	18.02.22	DRAWING NO. EDC-118044-31-00	
			CHECKED : HY. KOBAYASHI	18.02.22	PART NO. LF07WBLP-6PA(31)	
			DESIGNED : TY. SUZUKI	18.02.21	CODE NO. CL136-0022-1-31	
			DRAWN : HM. SAITO	18.02.19	1/1	

## X-ON Electronics

Largest Supplier of Electrical and Electronic Components

*Click to view similar products for [Standard Circular Connector](#) category:*

*Click to view products by [Hirose](#) manufacturer:*

Other Similar products are found below :

[5M2530B10P](#) [600259N006](#) [600273N007](#) [6134-336-13149](#) [6134-337-11149](#) [6134-337-2390](#) [6134-341-17149](#) [6280-4SG-516](#) [6280-7SG-3DC](#)  
[6290](#) [6291A](#) [66200A-10](#) [680-SMG](#) [681-PMG](#) [CXS3102A14S2P](#) [CXS3102A181S](#) [7251-6SG-300](#) [7271-6SG-300](#) [7282-3PG-300-CH3](#) [75-](#)  
[474014-05S](#) [75-474618-01S](#) [75-474618-04S](#) [799539-000](#) [MI8-SE](#) [805-005-07NF11-19PC](#) [805-005-07NF15-7PA](#) [8280-4PG-516](#) [8280-7PG-](#)  
[519](#) [8282-5PG-519](#) [836783-1](#) [MP-4102-25P-C](#) [862256-1](#) [864019-2](#) [866857-1](#) [867865-1](#) [PT01SP-14-18P](#) [PT08P-14-5S](#) [PTSF06SE-14-12S](#)  
[120-1833-000](#) [QCM019PC2DC012B](#) [1-2069279-1](#) [121583-0217](#) [121667-0020](#) [129591AU](#) [1000B BULK](#) [RD10A16-19-P6CS051/1](#)  
[RD10A20-31-P8CS051/1](#) [RD16A14-12-S6CS051/2](#) [1301240290](#) [1301240347](#) [1301860202](#)