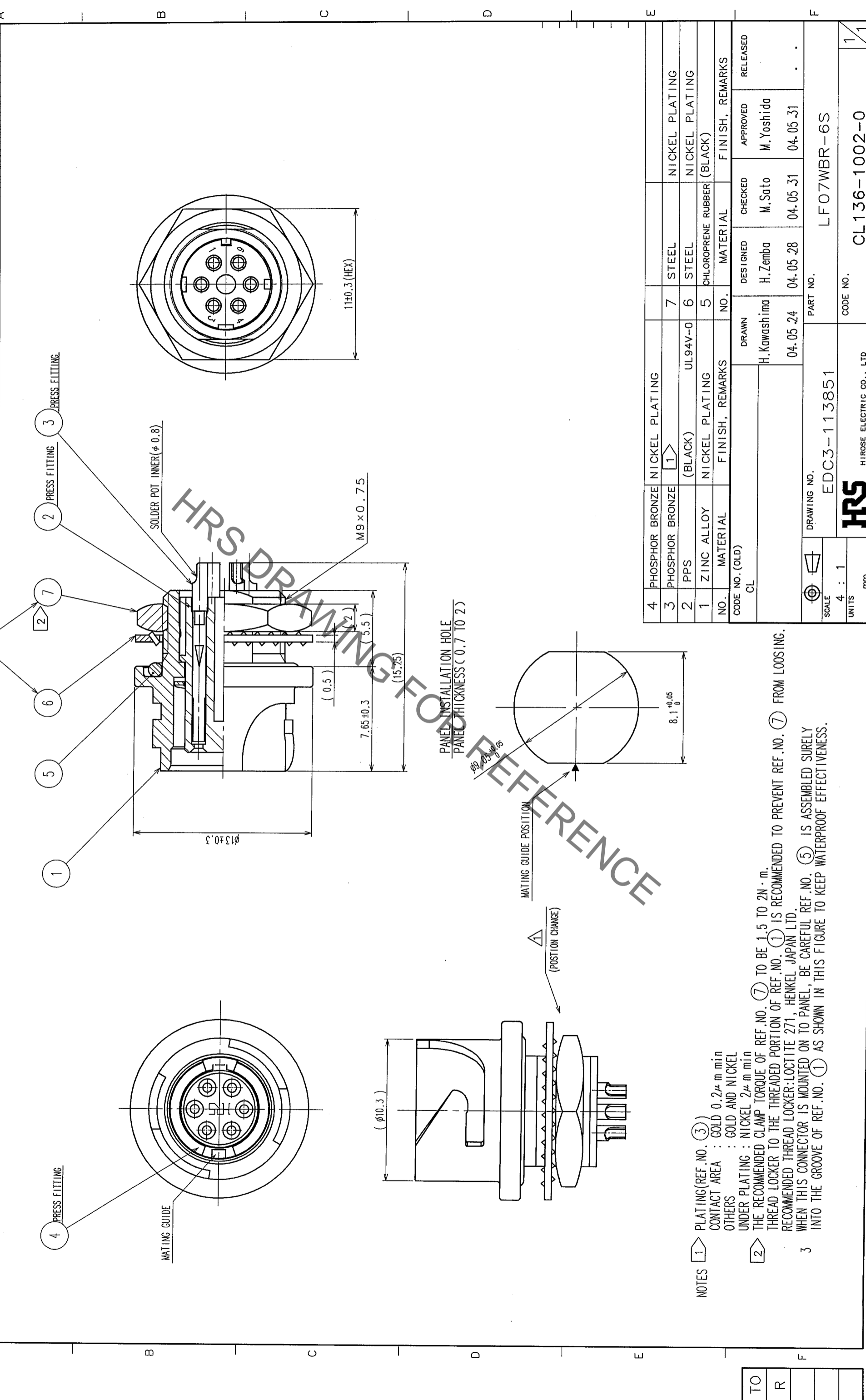


COUNT	DESCRIPTION OF REVISIONS	BY	CHKD	DATE	COUNT	DESCRIPTION OF REVISIONS	BY	CHKD	DATE
2	RE-C-03960	H.Z	M.S	04.12.1					



- NOTES
- 1 PLATING (REF. NO. 3)
 CONTACT AREA : GOLD 0.2μm min
 OTHERS : GOLD AND NICKEL
 - 2 UNDER PLATING : NICKEL 2μm min
 THE RECOMMENDED CLAMP TORQUE OF REF. NO. 7 TO BE 1.5 TO 2N·m.
 THE RECOMMENDED CLAMP TORQUE OF REF. NO. 1 IS RECOMMENDED TO PREVENT REF. NO. 7 FROM LOOSING.
 THREAD LOCKER TO THE THREADED PORTION OF REF. NO. 1 IS RECOMMENDED TO PREVENT REF. NO. 7 FROM LOOSING.
 RECOMMENDED THREAD LOCKER: LOCTITE 271, HENKEL JAPAN LTD.
 - 3 WHEN THIS CONNECTOR IS MOUNTED ON TO PANEL, BE CAREFUL REF. NO. 5 IS ASSEMBLED SURELY INTO THE GROOVE OF REF. NO. 1 AS SHOWN IN THIS FIGURE TO KEEP WATERPROOF EFFECTIVENESS.

NO.	MATERIAL	FINISH, REMARKS	NO.	MATERIAL	FINISH, REMARKS
4	PHOSPHOR BRONZE	NICKEL PLATING	7	STEEL	NICKEL PLATING
3	PHOSPHOR BRONZE	1 (BLACK)	6	STEEL	NICKEL PLATING
2	PPS	UL94V-0	5	CHLOROPRENE RUBBER	(BLACK)
1	ZINC ALLOY	NICKEL PLATING			

CODE NO. (OLD)	CL	DRAWN	DESIGNED	CHECKED	APPROVED	RELEASED
		H. Kawashima	H. Zemba	M. Sato	M. Yoshida	
		04.05.24	04.05.28	04.05.31	04.05.31	

DRAWING NO.	PART NO.
EDC3-113851	LFO7WBR-6S

SCALE	UNITS	CODE NO.
4 : 1	mm	CL136-1002-0

X-ON Electronics

Largest Supplier of Electrical and Electronic Components

Click to view similar products for [Standard Circular Connector](#) category:

Click to view products by [Hirose](#) manufacturer:

Other Similar products are found below :

[5M2530B10P](#) [600259N006](#) [600273N007](#) [6134-336-13149](#) [6134-337-11149](#) [6134-337-2390](#) [6134-341-17149](#) [6280-4SG-516](#) [6280-7SG-3DC](#)
[6290](#) [6291A](#) [66200A-10](#) [680-SMG](#) [681-PMG](#) [CXS3102A14S2P](#) [CXS3102A181S](#) [7251-6SG-300](#) [7271-6SG-300](#) [7282-3PG-300-CH3](#) [75-](#)
[474014-05S](#) [75-474618-01S](#) [75-474618-04P](#) [75-474618-04S](#) [799539-000](#) [MI8-SE](#) [805-005-07NF11-19PC](#) [805-005-07NF15-7PA](#) [8280-4PG-](#)
[516](#) [8280-7PG-519](#) [8282-5PG-519](#) [836783-1](#) [MP-4102-25P-C](#) [862256-1](#) [864019-2](#) [866857-1](#) [867865-1](#) [PT01SP-14-18P](#) [PT08P-14-5S](#)
[PTSF06SE-14-12S](#) [120-1833-000](#) [QCM019PC2DC012B](#) [1-2069279-1](#) [121583-0217](#) [121667-0020](#) [129591AU](#) [1000B BULK](#) [RD10A16-19-](#)
[P6CS051/1](#) [RD10A20-31-P8CS051/1](#) [RD16A14-12-S6CS051/2](#) [1301240290](#) [1301240347](#)