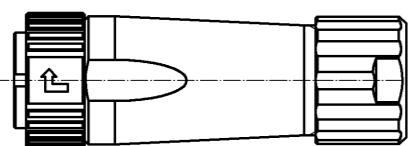


Sep.1.2021 Copyright 2021 HIROSE ELECTRIC CO., LTD. All Rights Reserved.  
In case of consideration for using Automotive equipment / device which demand high reliability, kindly contact our sales window correspondents.

Fig.2(1:1)



A-A

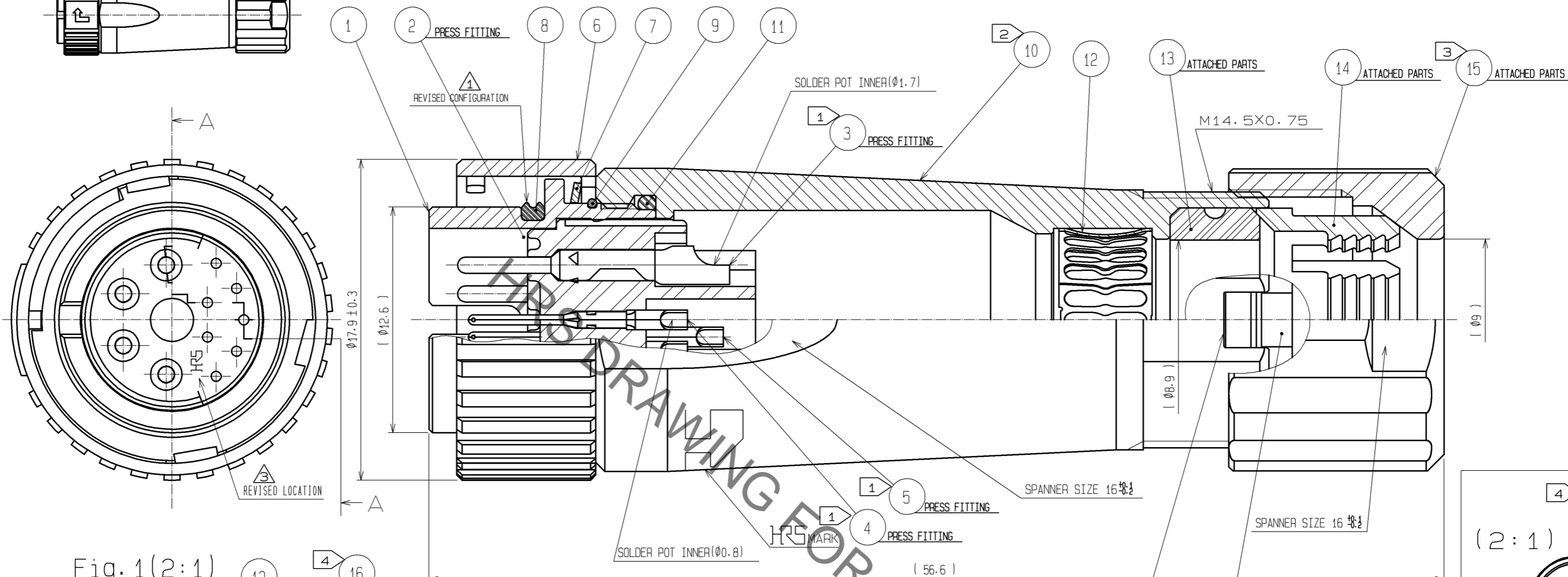
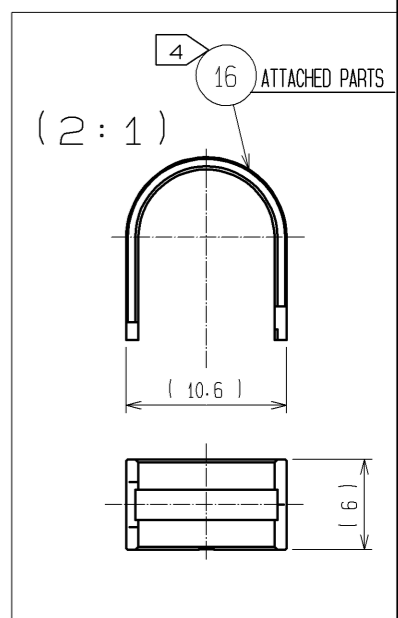
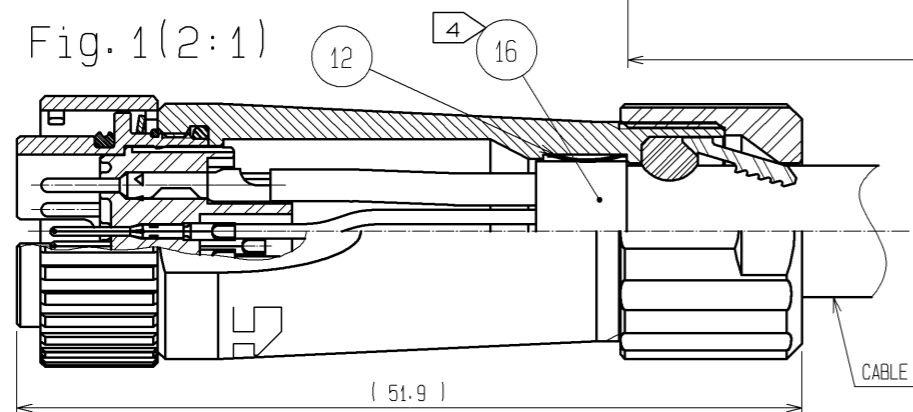


Fig.1(2:1)



- NOTES
- ① PLATING(REF.NO.③,④,⑤)  
CONTACT AREA : GOLD 0.2μm min  
OTHERS : GOLD AND NICKEL  
UNDER PLATING : NICKEL 2μm min
  - ② THE RECOMMENDED CLAMP TORQUE OF REF.NO.② TO BE 1.5 TO 2N·m.  
THREAD LOCKER TO THE THREADED PORTION OF REF.NO.② IS RECOMMENDED TO PREVENT REF.NO.② FROM LOOSING.  
RECOMMENDED THREAD LOCKER:LOCTITE 271, HENKEL JAPAN LTD.
  - ③ THE RECOMMENDED CLAMP TORQUE OF REF.NO.③ TO BE 1 TO 1.5N·m.  
THREAD LOCKER AND LOCK PRIMER TO THE THREADED PORTION M14.5X0.75 OF REF.NO.③ IS RECOMMENDED TO PREVENT REF.NO.③ FROM LOOSING.  
RECOMMENDED THREAD LOCKER AND LOCK PRIMER : LOCTITE 271, LOCK PRIMER 7649, HENKEL JAPAN LTD.
  - ④ FASTEN REF.NO.④ TO THE CABLE WITH THE CABLE CRIMPING TOOL.  
AND MAKE REF.NO.④ CONTACT WITH REF.NO.④ (REFER TO Fig.1).  
REFER TO THE TECHNICAL SPECIFICATION ATAD-C0099 FOR DETAILS.  
APPLICABLE CABLE CRIMPING TOOL : LF-TC-01 (CL150-0234-6)
  - ⑤ APPLICABLE CABLE ASSEMBLY FIXTURE : LF13BP-T01 (CL150-0237-4)  
CABLE ASSEMBLY FIXTURE IS USED AS A RECEPTACLE STAND OF EXTRACT AND THE PART NUMBER ⑤ OF AN ASSEMBLY.
  - ⑥ Fig.2 SHOWS THE APPEARANCE AFTER ASSEMBLY.
  - ⑦ ROTATION EXAMPLES OF REF.NOS.⑦ AND ⑧ TO ⑧ ARE SHOWN.

8	CHLOROPRENE RUBBER	(BLACK)	16	BRASS	NICKEL PLATING
7	STAINLESS STEEL		15	PPS	(NATURAL·BROWN) UL94V-0
6	ZINC ALLOY	NICKEL PLATING	14	POLYAMIDE	(NATURAL·MILKY WHITE) UL94V-0
5	COPPER ALLOY	①	13	CHLOROPRENE RUBBER	(BLACK)
4	COPPER ALLOY	①	12	PHOSPHOR BRONZE	NICKEL PLATING
3	COPPER ALLOY	①	11	CHLOROPRENE RUBBER	(BLACK)
2	PPS	(BLACK) UL94V-0	10	ZINC ALLOY	NICKEL PLATING
1	ZINC ALLOY	NICKEL PLATING	9	STAINLESS STEEL	
NO.	MATERIAL	FINISH . REMARKS	NO.	MATERIAL	FINISH . REMARKS
UNITS mm		SCALE 4 : 1	COUNT 1	DESCRIPTION OF REVISIONS DIS-C-000768	
DESIGNED DS. MATSUNE		CHECKED YH. YAMADA		DATE 08.01.08	
APPROVED : MR. YOSHIDA		05.01.05		DRAWING NO. EDC3-114383-00	
CHECED : MO. SATOH		05.01.05		PART NO. LF13WBP-11P	
DESIGNED : YH. YAMADA		05.01.05		CODE NO. CL136-0012-8-00	
DRAWN : YH. YAMADA		05.01.05			

## X-ON Electronics

Largest Supplier of Electrical and Electronic Components

*Click to view similar products for [Standard Circular Connector](#) category:*

*Click to view products by [Hirose](#) manufacturer:*

Other Similar products are found below :

[5M2530B10P](#) [600259N006](#) [600273N007](#) [6134-336-13149](#) [6134-337-11149](#) [6134-337-2390](#) [6134-341-17149](#) [6280-4SG-516](#) [6280-7SG-3DC](#)  
[6290](#) [6291A](#) [66200A-10](#) [680-SMG](#) [681-PMG](#) [CXS3102A14S2P](#) [CXS3102A181S](#) [7251-6SG-300](#) [7271-6SG-300](#) [7282-3PG-300-CH3](#) [75-](#)  
[474014-05S](#) [75-474618-01S](#) [75-474618-04S](#) [799539-000](#) [MI8-SE](#) [805-005-07NF11-19PC](#) [805-005-07NF15-7PA](#) [8280-4PG-516](#) [8280-7PG-](#)  
[519](#) [8282-5PG-519](#) [836783-1](#) [MP-4102-25P-C](#) [862256-1](#) [864019-2](#) [866857-1](#) [867865-1](#) [PT01SP-14-18P](#) [PT08P-14-5S](#) [PTSF06SE-14-12S](#)  
[120-1833-000](#) [QCM019PC2DC012B](#) [1-2069279-1](#) [121583-0217](#) [121667-0020](#) [129591AU](#) [1000B BULK](#) [RD10A16-19-P6CS051/1](#)  
[RD10A20-31-P8CS051/1](#) [RD16A14-12-S6CS051/2](#) [1301240290](#) [1301240347](#) [1301860202](#)