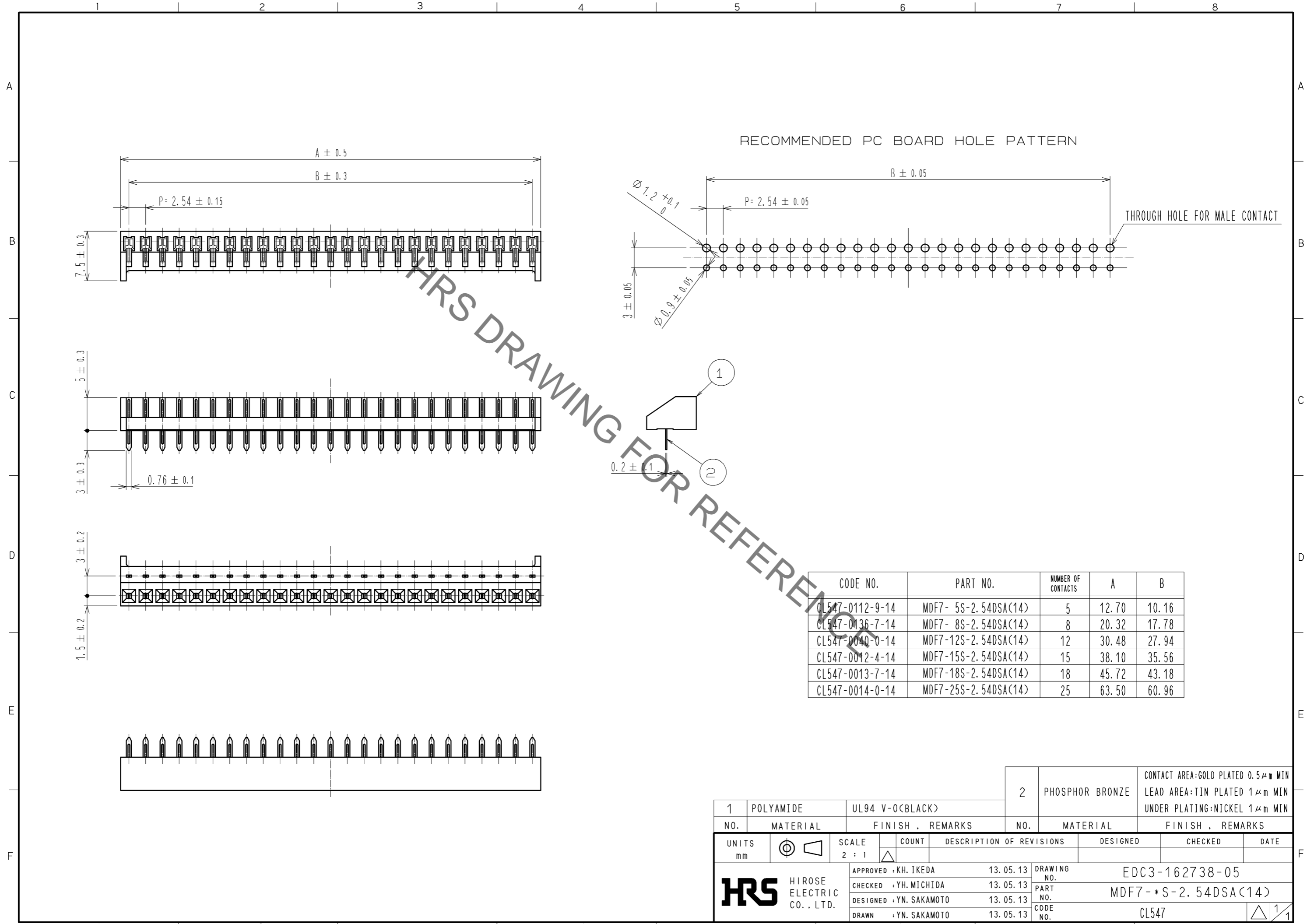


Jun.1.2019 Copyright 2019 HIROSE ELECTRIC CO., LTD. All Rights Reserved.
In case of consideration for using Automotive equipment / device which demand high reliability, kindly contact our sales window correspondents.



HRS DRAWING FOR REFERENCE

CODE NO.	PART NO.	NUMBER OF CONTACTS	A	B
CL547-0112-9-14	MDF7- 5S-2.54DSA(14)	5	12.70	10.16
CL547-0136-7-14	MDF7- 8S-2.54DSA(14)	8	20.32	17.78
CL547-0040-0-14	MDF7-12S-2.54DSA(14)	12	30.48	27.94
CL547-0012-4-14	MDF7-15S-2.54DSA(14)	15	38.10	35.56
CL547-0013-7-14	MDF7-18S-2.54DSA(14)	18	45.72	43.18
CL547-0014-0-14	MDF7-25S-2.54DSA(14)	25	63.50	60.96

1	POLYAMIDE	UL94 V-0(BLACK)	2	PHOSPHOR BRONZE	CONTACT AREA:GOLD PLATED 0.5μm MIN LEAD AREA:TIN PLATED 1μm MIN UNDER PLATING:NICKEL 1μm MIN			
NO.	MATERIAL	FINISH . REMARKS	NO.	MATERIAL	FINISH . REMARKS			
UNITS mm		SCALE 2 : 1		COUNT	DESCRIPTION OF REVISIONS	DESIGNED	CHECKED	DATE
HRS HIROSE ELECTRIC CO., LTD.		APPROVED : KH. IKEDA	13.05.13	DRAWING NO. EDC3-162738-05				
		CHECKED : YH. MICHIDA	13.05.13	PART NO. MDF7-*S-2.54DSA(14)				
		DESIGNED : YN. SAKAMOTO	13.05.13	CODE NO. CL547				
		DRAWN : YN. SAKAMOTO	13.05.13					

X-ON Electronics

Largest Supplier of Electrical and Electronic Components

Click to view similar products for [Board to Board & Mezzanine Connectors](#) category:

Click to view products by [Hirose](#) manufacturer:

Other Similar products are found below :

[589158040000018](#) [MDF7C-18P-2.54DSA\(55\)](#) [FCN-230C068-11](#) [FCN-268F012-G/BD](#) [FCN-268F036-G/BD](#) [FCN-268M012-G/0D](#) [FCN-268M024-G/1D](#) [FCN-723J004/1](#) [MIS-048-01-F-D-DP-K](#) [832-10-034-10-001000](#) [FX4C-80S-1.27DSA](#) [FCN-214Q030-G/0](#) [FCN-234P048-G/0](#) [FCN-235D050-G/C](#) [210-93-314-41-105000](#) [2-22603-0](#) [MDF7-40DP-2.54DSA\(55\)](#) [AXG720047](#) [MIT-114-03-F-D-K](#) [55323-1519](#) [DF33-2P-3.3DSA\(24\)](#) [YFT-20-05-H-03-SB-K](#) [503308-3040](#) [026-6203-PDB](#) [027-6203-PDB](#) [069159702701000](#) [10123981-102LF](#) [101A10019X](#) [55650-0588-C](#) [68682-310LF](#) [68684-306](#) [75140-7012](#) [87471-650](#) [YTW-30-07-H-Q-410-140](#) [FCN-268F024-G0D](#) [10124054-515LF](#) [68685-603](#) [8-1616154-3](#) [MIS-019-01-F-D](#) [FCN-268M024-G/3D](#) [FCN-268M036-G/BD](#) [20021832-06016C1LF](#) [KX15-20KLDL-E1000E](#) [AXE810124](#) [FCN-214J100-G/0](#) [FCN-230C068-E/S](#) [AXE812124](#) [AXE816124](#) [AXE720127](#) [354184](#)