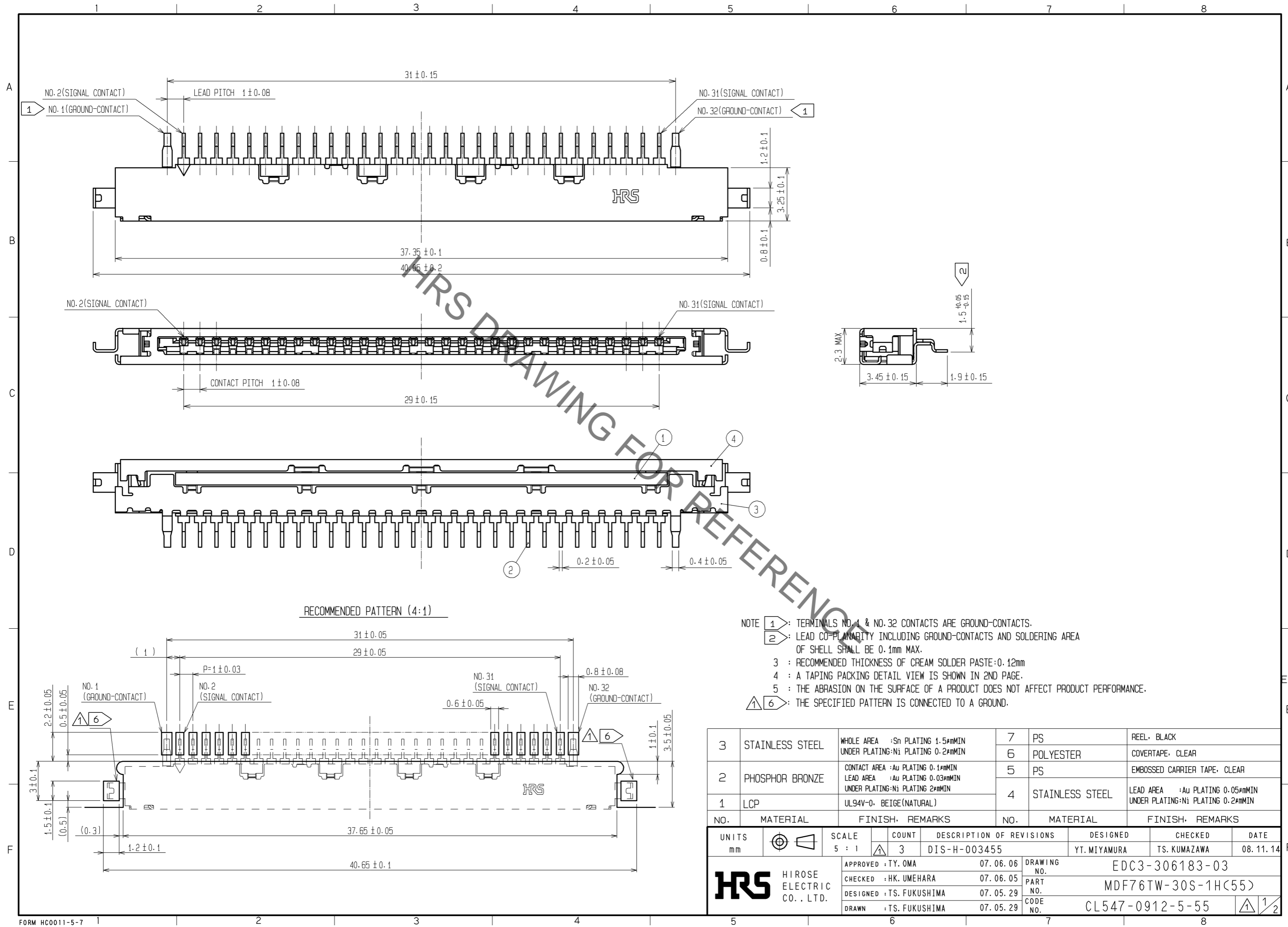


Sep.1.2021 Copyright 2021 HIROSE ELECTRIC CO., LTD. All Rights Reserved.
In case of consideration for using Automotive equipment / device which demand high reliability, kindly contact our sales window correspondents.



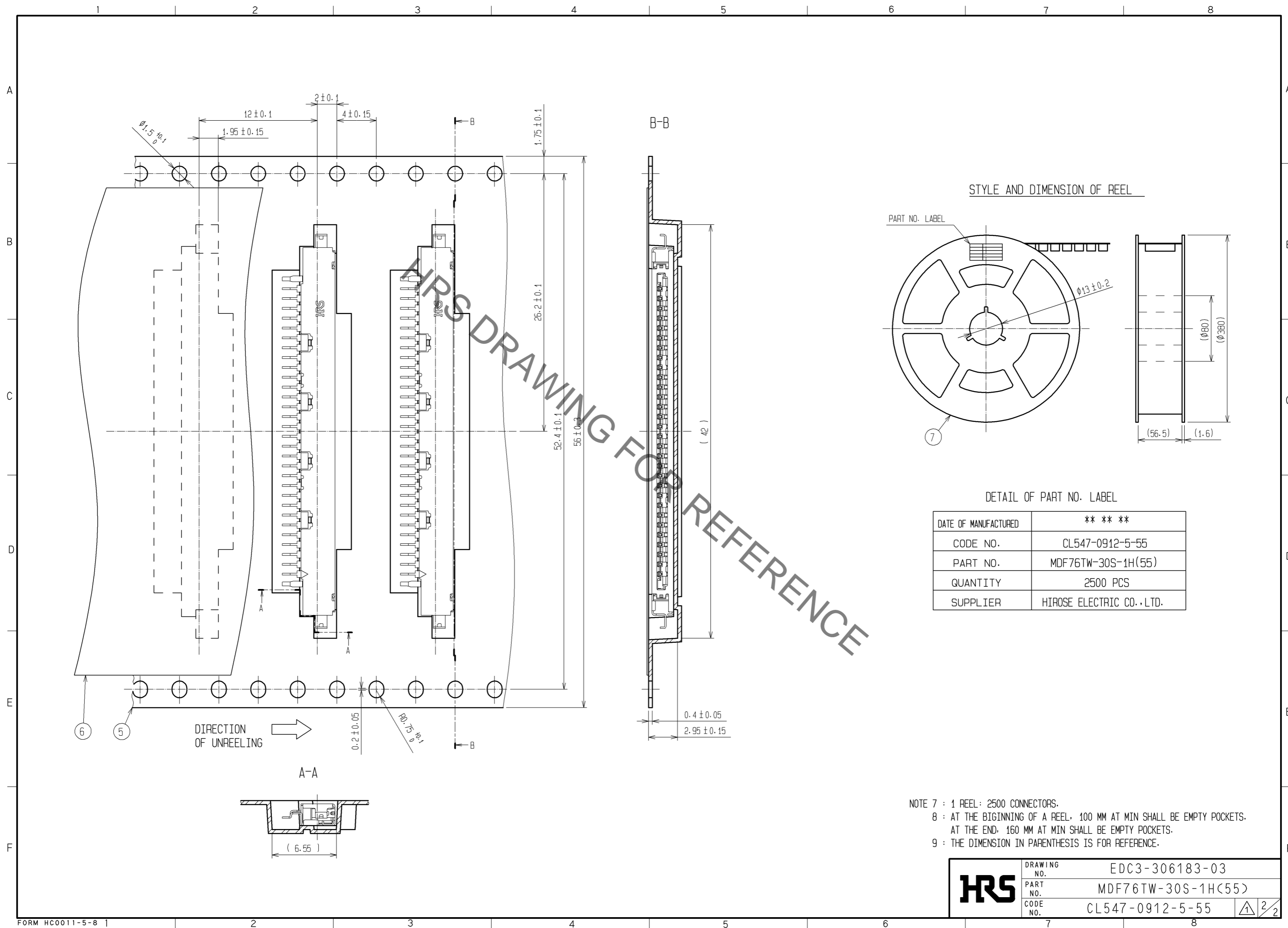
- NOTE
- ①: TERMINALS NO. 1 & NO. 32 CONTACTS ARE GROUND-CONTACTS.
 - ②: LEAD CO-PLANARITY INCLUDING GROUND-CONTACTS AND SOLDERING AREA OF SHELL SHALL BE 0.1mm MAX.
 - ③: RECOMMENDED THICKNESS OF CREAM SOLDER PASTE: 0.12mm
 - ④: A TAPING PACKING DETAIL VIEW IS SHOWN IN 2ND PAGE.
 - ⑤: THE ABRASION ON THE SURFACE OF A PRODUCT DOES NOT AFFECT PRODUCT PERFORMANCE.
 - ⑥: THE SPECIFIED PATTERN IS CONNECTED TO A GROUND.

| NO. | MATERIAL | FINISH | REMARKS | NO. | MATERIAL | FINISH | REMARKS |
|-----|-----------------|--|---------|-----|-----------------|--------|--|
| 3 | STAINLESS STEEL | WHOLE AREA : Sn PLATING 1.5μmMIN UNDER PLATING: Ni PLATING 0.2μmMIN | | 7 | PS | | REEL, BLACK |
| 2 | PHOSPHOR BRONZE | CONTACT AREA : Au PLATING 0.1μmMIN LEAD AREA : Au PLATING 0.03μmMIN UNDER PLATING: Ni PLATING 2μmMIN | | 6 | POLYESTER | | COVERTAPE, CLEAR |
| 1 | LCP | UL94V-0, BEIGE(NATURAL) | | 5 | PS | | EMBOSSED CARRIER TAPE, CLEAR |
| | | | | 4 | STAINLESS STEEL | | LEAD AREA : Au PLATING 0.05μmMIN UNDER PLATING: Ni PLATING 0.2μmMIN |

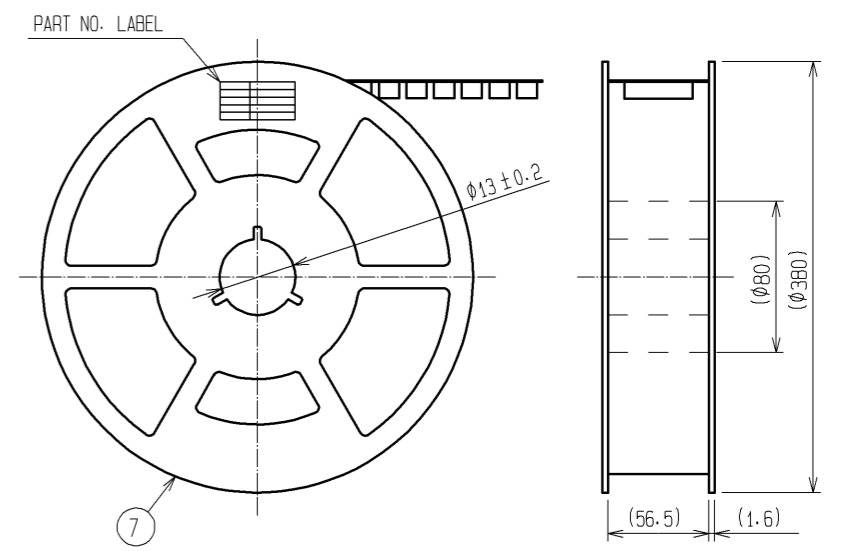
| UNITS | SCALE | COUNT | DESCRIPTION OF REVISIONS | DESIGNED | CHECKED | DATE |
|-------|-------|-------|--------------------------|--------------|--------------|------------|
| mm | 5 : 1 | 3 | DIS-H-003455 | YT. MIYAMURA | TS. KUMAZAWA | 08. 11. 14 |

| APPROVED | DATE | DRAWING NO. |
|---------------|------------|--------------------|
| TY. OMA | 07. 06. 06 | EDC3-306183-03 |
| CHECKED | DATE | PART NO. |
| HK. UMEHARA | 07. 06. 05 | MDF76TW-30S-1H(55) |
| DESIGNED | DATE | CODE NO. |
| TS. FUKUSHIMA | 07. 05. 29 | CL547-0912-5-55 |
| DRAWN | DATE | |
| TS. FUKUSHIMA | 07. 05. 29 | |

Sep.1.2021 Copyright 2021 HIROSE ELECTRIC CO., LTD. All Rights Reserved.
 In case of consideration for using Automotive equipment / device which demand high reliability, kindly contact our sales window correspondents.



STYLE AND DIMENSION OF REEL



DETAIL OF PART NO. LABEL

| | |
|----------------------|--------------------------|
| DATE OF MANUFACTURED | ** ** * |
| CODE NO. | CL547-0912-5-55 |
| PART NO. | MDF76TW-30S-1H(55) |
| QUANTITY | 2500 PCS |
| SUPPLIER | HIROSE ELECTRIC CO.,LTD. |

- NOTE 7 : 1 REEL : 2500 CONNECTORS.
 8 : AT THE BEGINNING OF A REEL, 100 MM AT MIN SHALL BE EMPTY POCKETS.
 AT THE END, 160 MM AT MIN SHALL BE EMPTY POCKETS.
 9 : THE DIMENSION IN PARENTHESIS IS FOR REFERENCE.

| | | |
|------------|-------------|--------------------|
| HRS | DRAWING NO. | EDC3-306183-03 |
| | PART NO. | MDF76TW-30S-1H(55) |
| | CODE NO. | CL547-0912-5-55 |
| | | $\frac{2}{2}$ |

X-ON Electronics

Largest Supplier of Electrical and Electronic Components

Click to view similar products for [Board to Board & Mezzanine Connectors](#) category:

Click to view products by [Hirose](#) manufacturer:

Other Similar products are found below :

[589158040000018](#) [MDF7C-18P-2.54DSA\(55\)](#) [FCN-230C068-11](#) [FCN-268F012-G/BD](#) [FCN-268F036-G/BD](#) [FCN-268M012-G/0D](#) [FCN-268M024-G/1D](#) [FCN-723J004/1](#) [MIS-048-01-F-D-DP-K](#) [832-10-034-10-001000](#) [FX4C-80S-1.27DSA](#) [FCN-214Q030-G/0](#) [FCN-234P048-G/0](#) [FCN-235D050-G/C](#) [210-93-314-41-105000](#) [2-22603-0](#) [MDF7-40DP-2.54DSA\(55\)](#) [AXG720047](#) [MIT-114-03-F-D-K](#) [55323-1519](#) [DF33-2P-3.3DSA\(24\)](#) [YFT-20-05-H-03-SB-K](#) [503308-3040](#) [026-6203-PDB](#) [027-6203-PDB](#) [069159702701000](#) [10123981-102LF](#) [101A10019X](#) [55650-0588-C](#) [68682-310LF](#) [68684-306](#) [75140-7012](#) [87471-650](#) [YTW-30-07-H-Q-410-140](#) [FCN-268F024-G0D](#) [10124054-515LF](#) [68685-603](#) [8-1616154-3](#) [MIS-019-01-F-D](#) [FCN-268M024-G/3D](#) [FCN-268M036-G/BD](#) [20021832-06016C1LF](#) [KX15-20KLDL-E1000E](#) [AXE810124](#) [FCN-214J100-G/0](#) [FCN-230C068-E/S](#) [AXE812124](#) [AXE816124](#) [AXE720127](#) [354184](#)