


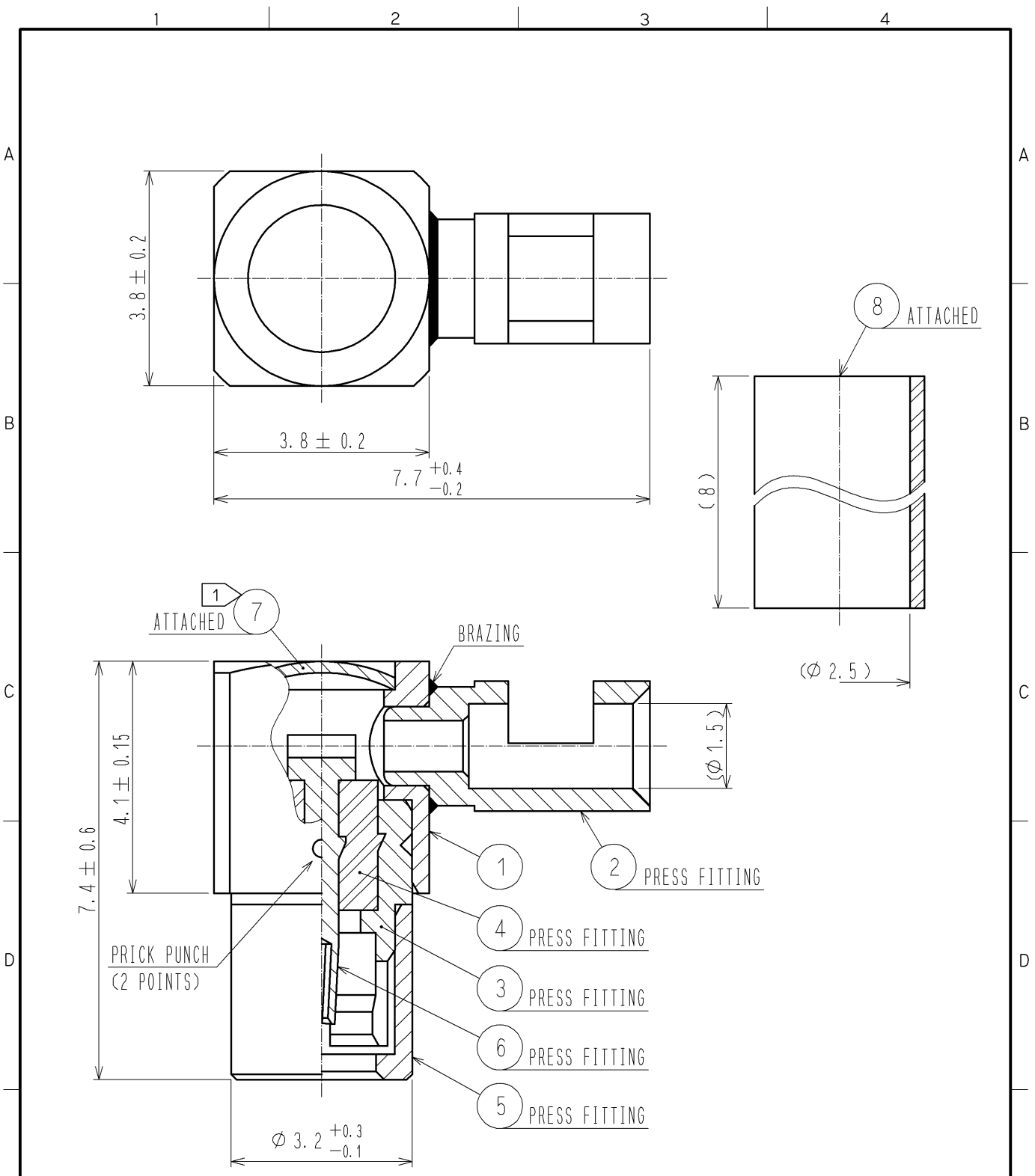


APPLICABLE STANDARD						
RATING	OPERATING TEMPERATURE RANGE	-55°C TO +85°C (95%RH MAX)	STORAGE TEMPERATURE RANGE	-55°C TO +85°C (95%RH MAX)		
	POWER	— W	CHARACTERISTIC IMPEDANCE	50 Ω (0 TO 7 GHz)		
	PECULIARITY	—	APPLICABLE CABLE	DTR178 , DFS025		
SPECIFICATIONS						
ITEM	TEST METHOD		REQUIREMENTS	QT	AT	
CONSTRUCTION						
GENERAL EXAMINATION	VISUALLY AND BY MEASURING INSTRUMENT.		ACCORDING TO DRAWING.	X	X	
MARKING	CONFIRMED VISUALLY.			—	—	
ELECTRIC CHARACTERISTICS						
CONTACT RESISTANCE	100 mA MAX (DC OR 1000 Hz).		CENTER CONTACT	10 mΩ MAX.	X	X
			OUTER CONTACT	3 mΩ MAX.	X	X
INSULATION RESISTANCE	250 V DC.		1000 MΩ MIN.		X	X
VOLTAGE PROOF	250 V AC FOR 1 min. CURRENT LEAKAGE 2mA MAX.		NO FLASHOVER OR BREAKDOWN.		X	X
VOLTAGE STANDING WAVE RATIO	FREQUENCY	0.045 TO 7 GHz	VSWR	1.3 MAX.	X	—
INSERTION LOSS	FREQUENCY	— TO — GHz		— dB MAX.	—	—
MECHANICAL CHARACTERISTICS						
CONTACT INSERTION AND EXTRACTION FORCES	MEASURED BY $\phi 0.3 \begin{matrix} 0 \\ -0.005 \end{matrix}$ STEEL GAUGE.		INSERTION FORCE	— N MAX.	—	—
			EXTRACTION FORCE	0.2 N MIN.	X	X
INSERTION AND WITHDRAWAL FORCES	MEASURED BY APPLICABLE CONNECTOR.		INSERTION FORCE	— N MAX.	—	—
			EXTRACTION FORCE	5 N MIN.	X	X
MECHANICAL OPERATION	200 TIMES INSERTIONS AND EXTRACTIONS.		1) CONTACT RESISTANCE: CENTER CONTACT 15 mΩ MAX. OUTER CONTACT 5 mΩ MAX. 2) NO DAMAGE, CRACK AND LOOSENESS OF PARTS.		X	—
VIBRATION	FREQUENCY 10 TO 500 Hz SINGLE AMPLITUDE 0.75 mm, 98 m/s ² AT 10 CYCLES FOR 3 DIRECTIONS.		1) NO ELECTRICAL DISCONTINUITY OF 1 μs. 2) NO DAMAGE, CRACK AND LOOSENESS OF PARTS.		X	—
SHOCK	490 m/s ² DIRECTIONS OF PULSE 11 ms AT 3 TIMES FOR 3 DIRECTIONS.				X	—
CABLE CLAMP ROBUSTNESS (AGAINST CABLE PULL)	APPLYING A PULL FORCE THE CABLE AXIALLY AT 49 N MAX.		1) NO WITHDRAWAL AND BREAKAGE OF CABLE. 2) NO BREAKAGE OF CLAMP.		X	—
ENVIRONMENTAL CHARACTERISTICS						
DAMP HEAT, CYCLIC	EXPOSED AT +25 TO +65°C, 90 TO 96 % TOTAL 10 CYCLES (240 h)		1) INSULATION RESISTANCE: 100 MΩ MIN. (AT HIGH HUMIDITY) 2) INSULATION RESISTANCE: 1000 MΩ MIN. (AT DRY) 3) NO DAMAGE, CRACK AND LOOSENESS OF PARTS.		X	—
RAPID CHANGE OF TEMPERATURE	TEMPERATURE -55 → — → +85 → — °C TIME 30 → 3 → 30 → 3 min UNDER 5 CYCLES.		NO DAMAGE, CRACK AND LOOSENESS OF PARTS.		X	—
CORROSION SALT MIST	EXPOSED IN 5 % SALT WATER SPRAY FOR 48 h.		NO HEAVY CORROSION.		X	—
	COUNT	DESCRIPTION OF REVISIONS	DESIGNED	CHECKED	DATE	
						
REMARK			APPROVED	MH. YAMANE	09.01.28	
RoHS COMPLIANT			CHECKED	TO. KATAYAMA	09.01.27	
			DESIGNED	TS. KANEKO	09.01.27	
Unless otherwise specified, refer to JIS C 5402.			DRAWN	TS. KANEKO	09.01.27	
Note QT:Qualification Test AT:Assurance Test X:Applicable Test			DRAWING NO.		ELC4-136795-40	
	SPECIFICATION SHEET		PART NO.	ML51-LP-DTR178-D (40)		
	HIROSE ELECTRIC CO., LTD.		CODE NO.	CL337-0054-0-40		1/1



RoHS COMPLIANT

NOTE \square NO PLATING IS ON THE SIDE OF PART \odot .

4	PTFE		8	POLYOLEFIN	(GRAY)
3	BERYLLIUM COPPER	GOLD PLATING	7	BRASS	NICKEL PLATING
2	BRASS	GOLD PLATING	6	BERYLLIUM COPPER	GOLD PLATING
1	BRASS	GOLD PLATING	5	STAINLESS STEEL	PASSIVATE
NO.	MATERIAL	FINISH . REMARKS	NO.	MATERIAL	FINISH . REMARKS

UNITS mm		SCALE 10 : 1	COUNT \triangle	DESCRIPTION OF REVISIONS	DESIGNED	CHECKED	DATE
-------------	--	-----------------	----------------------	--------------------------	----------	---------	------

HRS HIROSE ELECTRIC CO., LTD.	APPROVED : MH. YAMANE	09. 01. 28	DRAWING NO.	EDC4-136795-40
	CHECKED : TO. KATAYAMA	09. 01. 27	PART NO.	ML51-LP-DTR178-D(40)
	DESIGNED : TS. KANEKO	09. 01. 27	CODE NO.	CL337-0054-0-40
	DRAWN : TS. KANEKO	09. 01. 27		\triangle 1/1

X-ON Electronics

Largest Supplier of Electrical and Electronic Components

Click to view similar products for [RF Connectors / Coaxial Connectors](#) category:

Click to view products by [Hirose](#) manufacturer:

Other Similar products are found below :

[8915-1511-000](#) [89674-0827](#) [6001-7071-019](#) [6002-7051-003](#) [6002-7551-202](#) [6059674-1](#) [619550-1](#) [630059-000](#) [M39030/3-01N](#) [6500-7071-046](#) [6769](#) [CX050L2AQ](#) [7002-1542-011](#) [7004-1512-000](#) [7009-1511-004](#) [7010-1511-000](#) [7029-1511-060](#) [7101-1541-010](#) [7101-1571-002](#) [7105-1521-002](#) [7145-1521-002](#) [7203-1571-003](#) [7209-1511-011](#) [7210-1511-015](#) [7210-1511-019](#) [73137-5015](#) [73216-2241](#) [7325-1512-000](#) [73404-2300](#) [7405-1521-005](#) [7405-1521-802](#) [7406-1521-005](#) [8527](#) [8547](#) [FS11V](#) [8808-1511-001](#) [9049-9513-000](#) [9074-9513-000](#) [9101-9573-002](#) [910A205F](#) [9130-9573-002](#) [PL11SC-026](#) [PL375-33](#) [PL40-5](#) [PL71-9](#) [PL74C-221](#) [PL75MC-217](#) [PL803-7](#) [980-8666-005](#) [1200690078](#)