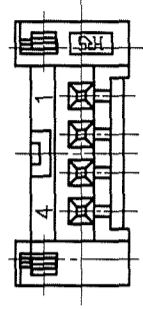
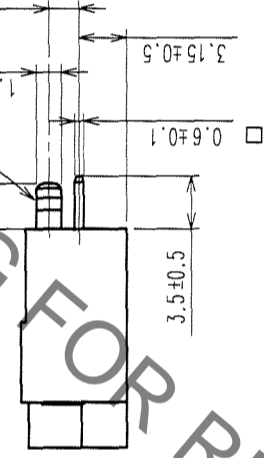
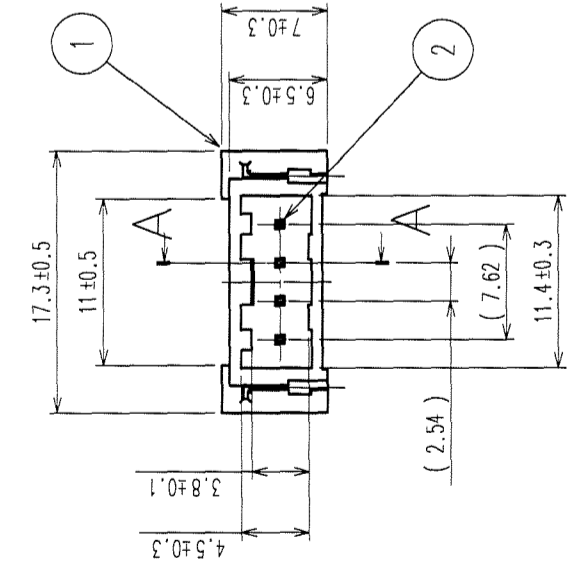
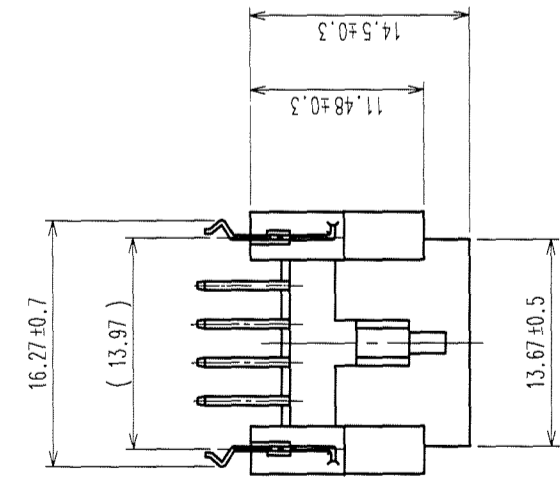
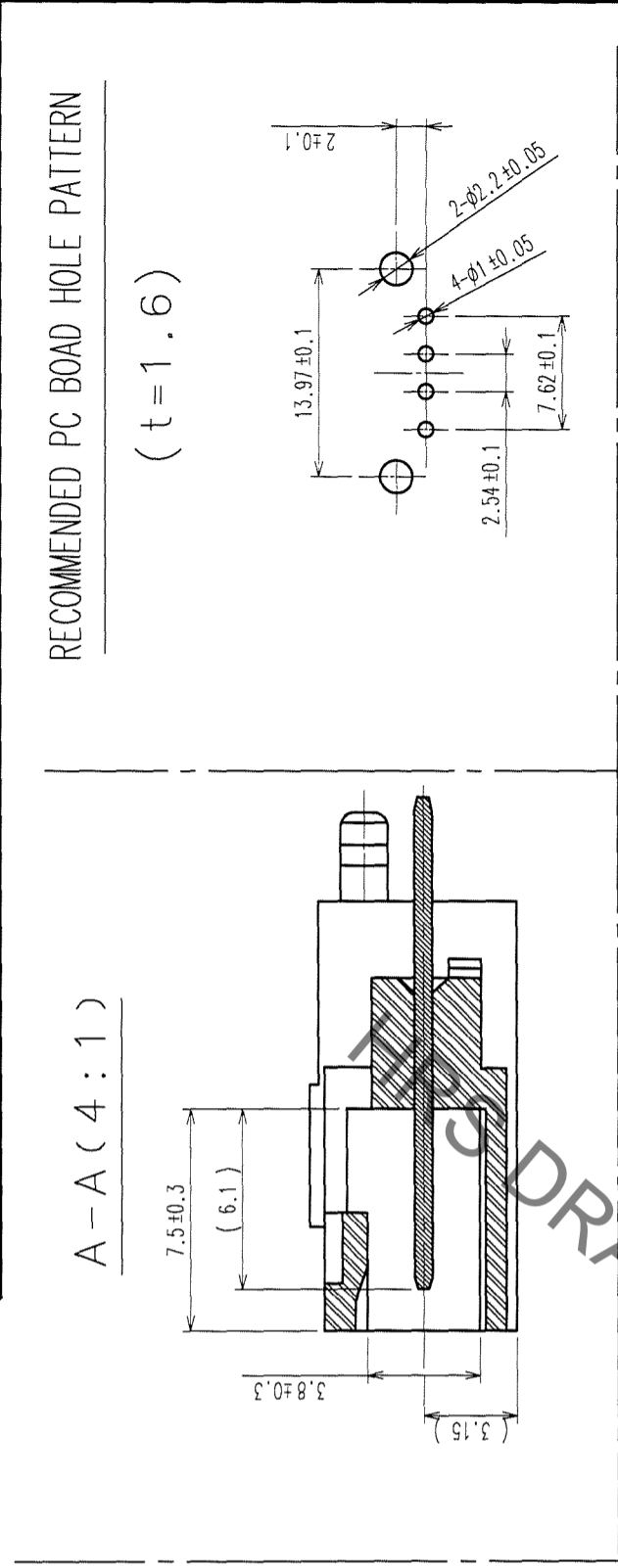
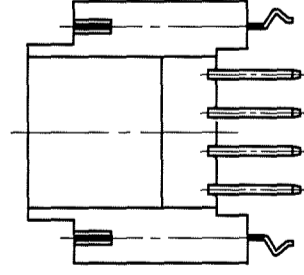
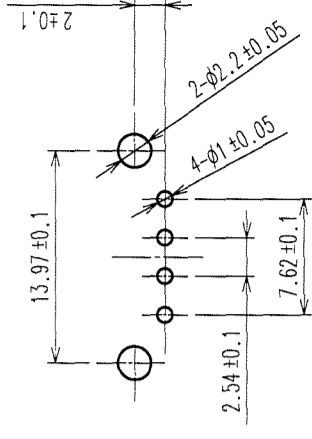


| COUNT | DESCRIPTION OF REVISIONS | BY | CHKD | DATE | COUNT | DESCRIPTION OF REVISIONS | BY | CHKD | DATE |
|-------|--------------------------|----|------|------|-------|--------------------------|----|------|------|
| △ | | | | | △ | | | | |
| △ | | | | | △ | | | | |
| △ | | | | | △ | | | | |



RECOMMENDED PC BOARD HOLE PATTERN

(t = 1 . 6)



| | |
|----|--|
| TO | |
| Q | |
| | |
| | |

| | | | | | |
|----------------|-----------------|---|----------|----------|-----------------|
| 2 | BRASS | TIN-COPPER PLATING 3 μ m OVER NICKEL PLATING 2 μ m | | | |
| 1 | PBT | (BLACK) UL94V-0 | | | |
| NO. | MATERIAL | FINISH, REMARKS | NO. | MATERIAL | FINISH, REMARKS |
| 3 | PHOSPHOR BRONZE | TIN PLATING 1 μ m | | | |
| CODE NO. (OLD) | | DRAWN | DESIGNED | CHECKED | APPROVED |
| | | S. Watanabe / S. Watanabe / M. Niwa | | | |
| | | 05.11.30 / 05.11.30 / 05.11.30 / 05.11.30 | | | |
| DRAWING NO. | | PART NO. | | RELEASED | |
| EDC3-041064-01 | | MQ115-4P-1A(21) | | | |
| SCALE | | CODE NO. | | | |
| 2 : 1 | | CL206-5133-6-21 | | | |
| UNITS | | HIROSE ELECTRIC CO., LTD | | | |
| mm | | | | | |

X-ON Electronics

Largest Supplier of Electrical and Electronic Components

Click to view similar products for [Headers & Wire Housings](#) category:

Click to view products by [Hirose](#) manufacturer:

Other Similar products are found below :

[892-18-020-10-001101](#) [58102-G61-06LF](#) [582553-1](#) [0009485154](#) [009176003701906](#) [0050291907](#) [LY20-4P-DT1-P1E-BR](#) [02.125.8002.8](#)
[609-3404](#) [61062-3](#) [622-0430](#) [622-3653LF](#) [63453-116](#) [636-1030](#) [636-1427](#) [636-3427](#) [636-4007](#) [641938-9](#) [641991-4](#) [644827-2](#) [65817-010LF](#)
[65817-015LF](#) [65863-015LF](#) [66207-023LF](#) [67095-007LF](#) [67601157](#) [68648-049](#) [70.362.1628.0](#) [70-4210](#) [70-4226B](#) [70-4853B](#) [707-5020](#) [707-](#)
[5028](#) [71.350.2428.0](#) [71918-208LF](#) [71961-016LF](#) [733-134](#) [733-162](#) [754199-000](#) [760-3052](#) [787-8014-00](#) [79531-3000](#) [FCN-360C032-B](#) [FCN-](#)
[367T-T012/H](#) [FCN-723D010/2](#) [80.063.4001.1](#) [800-90-001-10-001000](#) [800-90-010-10-002000](#) [801-43-002-10-013000](#) [801-43-006-10-002000](#)