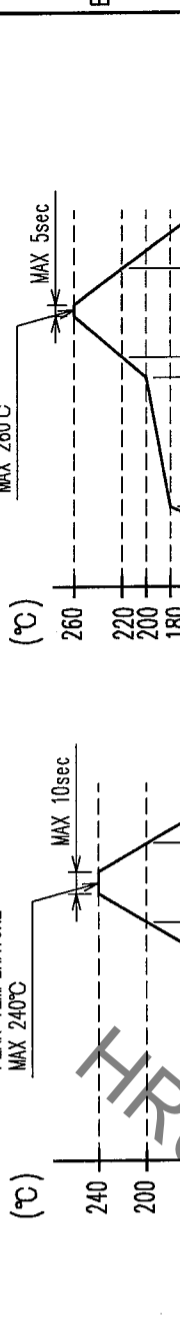


Jun.1.2021 Copyright 2021 HIROSE ELECTRIC CO., LTD. All Rights Reserved.  
 In case of consideration for using Automotive equipment / device which demand high reliability, kindly contact our sales window correspondents.

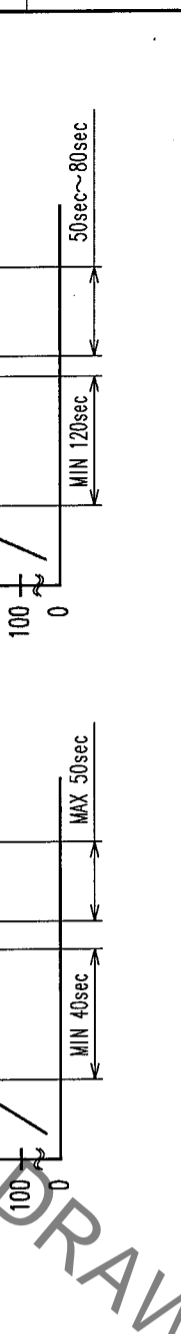
COUNT	DESCRIPTION OF REVISIONS	BY	CHKD	DATE	COUNT	DESCRIPTION OF REVISIONS	BY	CHKD	DATE
1	RE-J-01473	K.HIDARU	KAWA	'99.11.19	1				
6	RE-J-02231	D.Y.R.K	K	'04.9.25	6				

COUNT	DESCRIPTION OF REVISIONS	BY	CHKD	DATE	COUNT	DESCRIPTION OF REVISIONS	BY	CHKD	DATE
1	RE-J-01473	K.HIDARU	KAWA	'99.11.19	1				
6	RE-J-02231	D.Y.R.K	K	'04.9.25	6				

RECOMMENDED REFLOW TEMPERATURE PROFILE FOR TIN-LEAD SOLDER

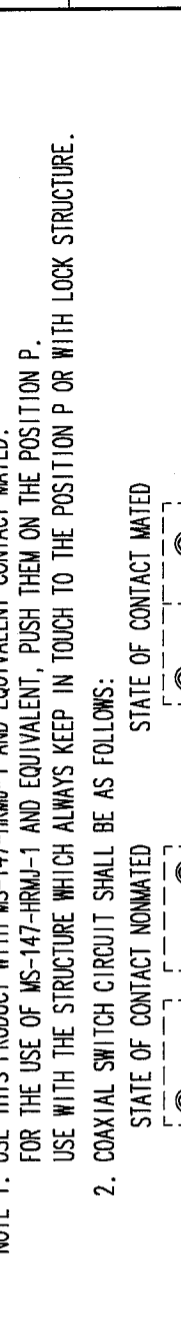


SPECIFIED REFLOW TEMPERATURE PROFILE FOR LEAD-FREE SOLDER



NOTE 1. USE THIS PRODUCT WITH MS-147-HRMJ-1 AND EQUIVALENT CONTACT MATED.  
 FOR THE USE OF MS-147-HRMJ-1 AND EQUIVALENT, PUSH THEM ON THE POSITION P.  
 USE WITH THE STRUCTURE WHICH ALWAYS KEEP IN TOUCH TO THE POSITION P OR WITH LOCK STRUCTURE.

NOTE 2. COAXIAL SWITCH CIRCUIT SHALL BE AS FOLLOWS:



- 3. LEAD CO-PLANARITY TO BE 0.13 mm MAX.
- 4. THIS PRODUCT IS IMPOSSIBLE TO WASH.
- 5. AVOID SHOCKING TO THIS PRODUCT DIRECTLY.

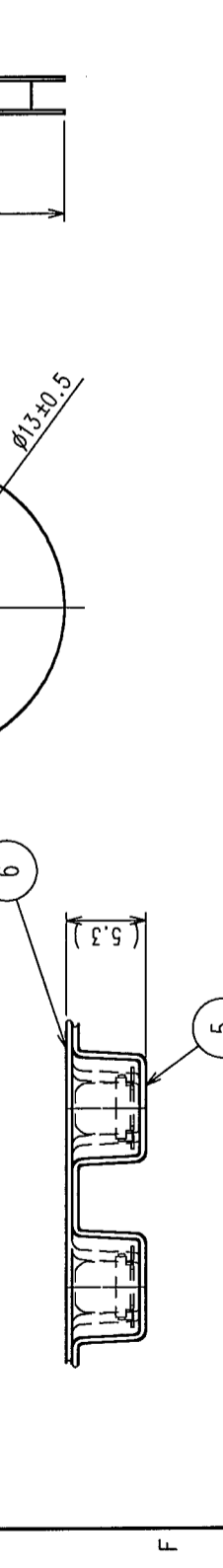
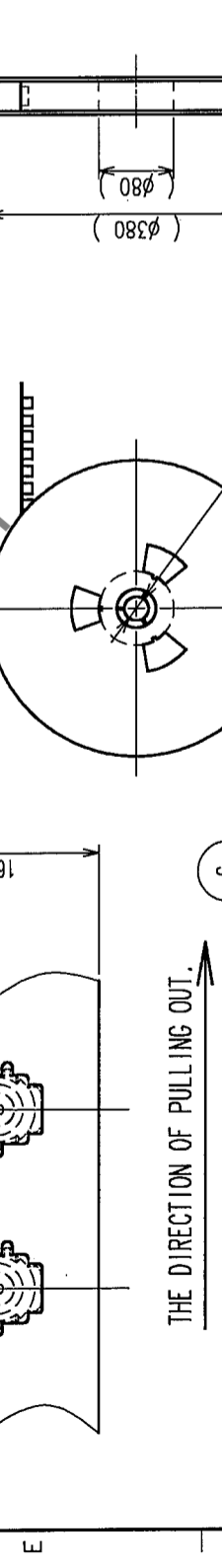
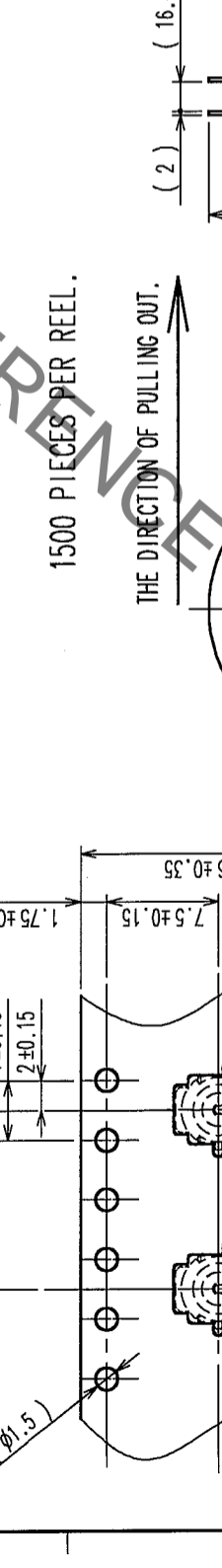
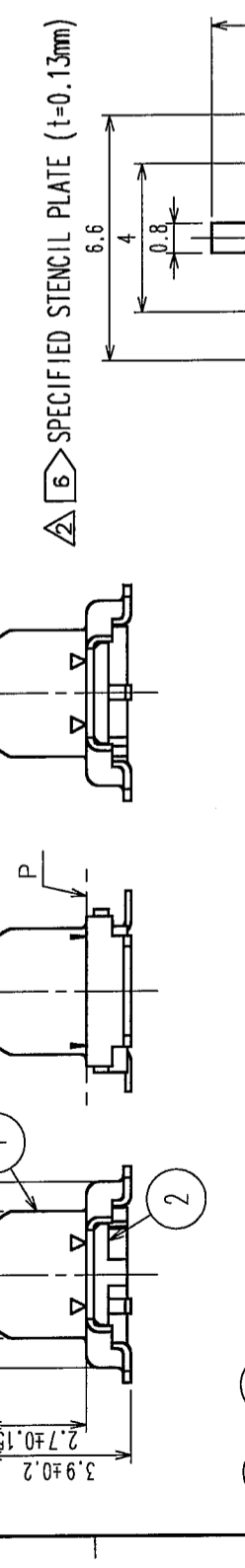
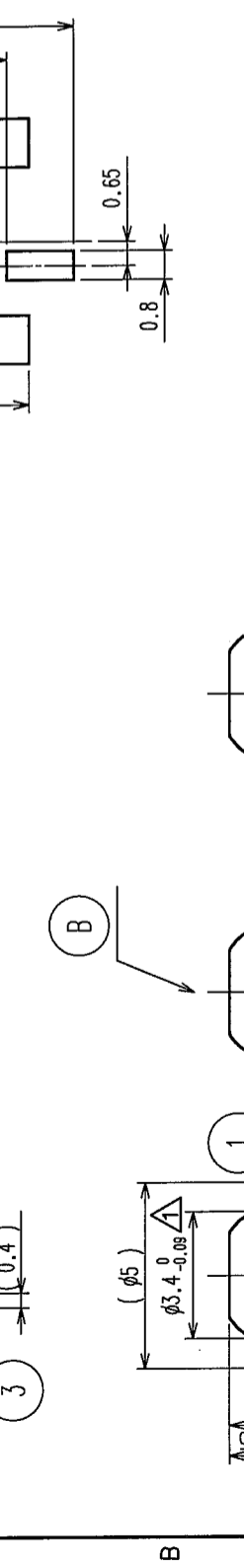
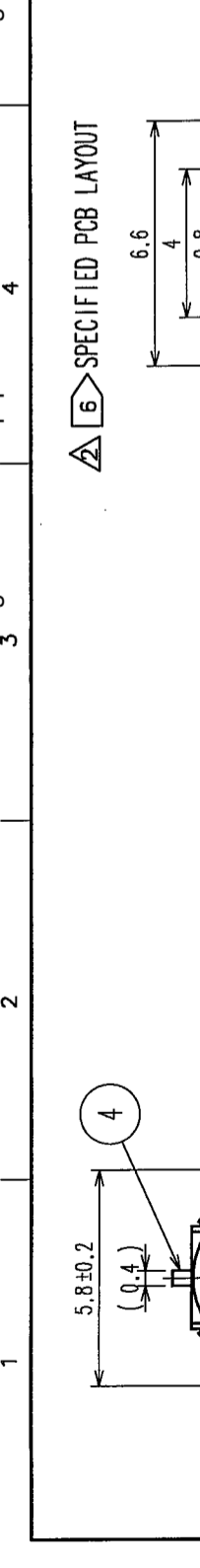
PCB LAYOUT, STENCIL PLATE AND REFLOW TEMPERATURE PROFILE ARE SPECIFIED FOR LEAD-FREE.

NO.	MATERIAL	FINISH, REMARKS	NO.	MATERIAL	FINISH, REMARKS
3	BERYLLIUM COPPER	SMT AREA: GOLD 0.03~0.07μ	6	PS	
2	POLYAMIDE	CONTACT AREA: GOLD 0.5μ	5	PS	
1	PHOSPHOR BRONZE	BLACK UL94HB	4	BERYLLIUM COPPER	SMT AREA: GOLD 0.03~0.07μ CONTACT AREA: GOLD 0.5μ

CODE NO. (OLD)	DESIGNED	CHECKED	APPROVED	RELEASED
	K.HIDA	K.HIDA	K.KANO	Y.MIYAKE
	99.9.21	99.9.21	99.9.21	99.9.21

DRAWING NO.	PART NO.
EDC3-180145-01	MS-147(06)

SCALE	UNITS	CODE NO.
5 : 1	mm	CL358-0150-5-06



TO	RFD

## X-ON Electronics

Largest Supplier of Electrical and Electronic Components

*Click to view similar products for [RF Connectors / Coaxial Connectors](#) category:*

*Click to view products by [Hirose](#) manufacturer:*

Other Similar products are found below :

[8915-1511-000](#) [89674-0827](#) [6001-7071-019](#) [6002-7051-003](#) [6002-7551-202](#) [6059674-1](#) [619550-1](#) [630059-000](#) [M39030/3-01N](#) [M3933/25-36N](#) [6500-7071-046](#) [6769](#) [CX050L2AQ](#) [7002-1542-011](#) [7004-1512-000](#) [7009-1511-004](#) [7010-1511-000](#) [7029-1511-060](#) [7101-1541-010](#) [7101-1571-002](#) [7105-1521-002](#) [7145-1521-002](#) [7203-1571-003](#) [7209-1511-011](#) [7210-1511-015](#) [7210-1511-019](#) [73137-5015](#) [73216-2241](#) [7325-1512-000](#) [73404-2300](#) [7405-1521-005](#) [7405-1521-802](#) [7406-1521-005](#) [8527](#) [8547](#) [FS11V](#) [8808-1511-001](#) [9049-9513-000](#) [9074-9513-000](#) [9101-9573-002](#) [910A205F](#) [9130-9573-002](#) [PL11SC-026](#) [PL375-33](#) [PL40-5](#) [PL71-9](#) [PL74C-221](#) [PL75MC-217](#) [PL803-7](#) [980-8666-005](#)