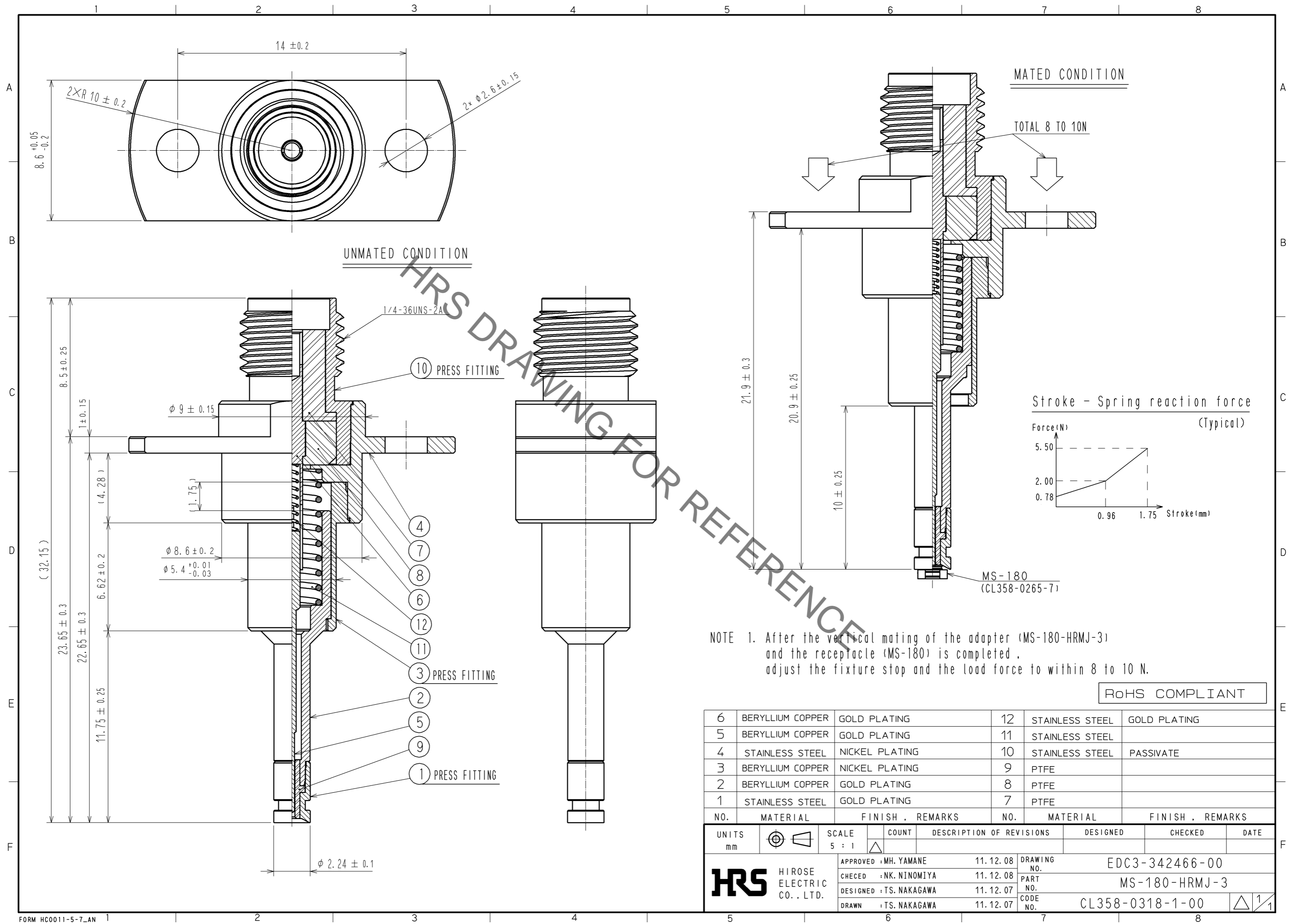


Sep.1.2021 Copyright 2021 HIROSE ELECTRIC CO., LTD. All Rights Reserved.
In case of consideration for using Automotive equipment / device which demand high reliability, kindly contact our sales window correspondents.



NOTE 1. After the vertical mating of the adapter (MS-180-HRMJ-3) and the receptacle (MS-180) is completed, adjust the fixture stop and the load force to within 8 to 10 N.

RoHS COMPLIANT

6	BERYLLIUM COPPER	GOLD PLATING	12	STAINLESS STEEL	GOLD PLATING
5	BERYLLIUM COPPER	GOLD PLATING	11	STAINLESS STEEL	
4	STAINLESS STEEL	NICKEL PLATING	10	STAINLESS STEEL	PASSIVATE
3	BERYLLIUM COPPER	NICKEL PLATING	9	PTFE	
2	BERYLLIUM COPPER	GOLD PLATING	8	PTFE	
1	STAINLESS STEEL	GOLD PLATING	7	PTFE	
NO.	MATERIAL	FINISH . REMARKS	NO.	MATERIAL	FINISH . REMARKS
UNITS mm					
SCALE 5 : 1		COUNT		DESCRIPTION OF REVISIONS	
DESIGNED		CHECKED		DATE	
APPROVED : MH. YAMANE		11.12.08		DRAWING NO. EDC3-342466-00	
CHECED : NK. NINOMIYA		11.12.08		PART NO. MS-180-HRMJ-3	
DESIGNED : TS. NAKAGAWA		11.12.07		CODE NO. CL358-0318-1-00	
DRAWN : TS. NAKAGAWA		11.12.07			

X-ON Electronics

Largest Supplier of Electrical and Electronic Components

Click to view similar products for [RF Adapters - In Series](#) *category:*

Click to view products by [Hirose](#) *manufacturer:*

Other Similar products are found below :

[5916-1103-603](#) [5918-1103-000](#) [5919-1503-000](#) [651A505](#) [82-5552](#) [9030-9523-502](#) [A0407000](#) [R114703000W](#) [R125704000](#) [R125771001](#)
[R141710000W](#) [R141723161](#) [R141730000](#) [R143730700](#) [R143770000](#) [R161703000W](#) [R161730000](#) [R161753000W](#) [R161791530W](#)
[R201705000](#) [R222705200](#) [R222M40010W](#) [R316754000](#) [R405006000](#) [R443162000](#) [AD78TL](#) [HRM-513S](#) [1996352-2](#) [2157155-1](#) [252169-75](#)
[AD158](#) [2101130-1](#) [252186](#) [R114704000W](#) [R114720000W](#) [R125705001](#) [R125705701](#) [R125771000](#) [R125771001W](#) [R125791501W](#)
[R127704001](#) [R127.870.001](#) [R127872001](#) [R141717000](#) [R142710000](#) [R142723000](#) [R143703000](#) [R143704000](#) [R143705700](#) [R143710000](#)