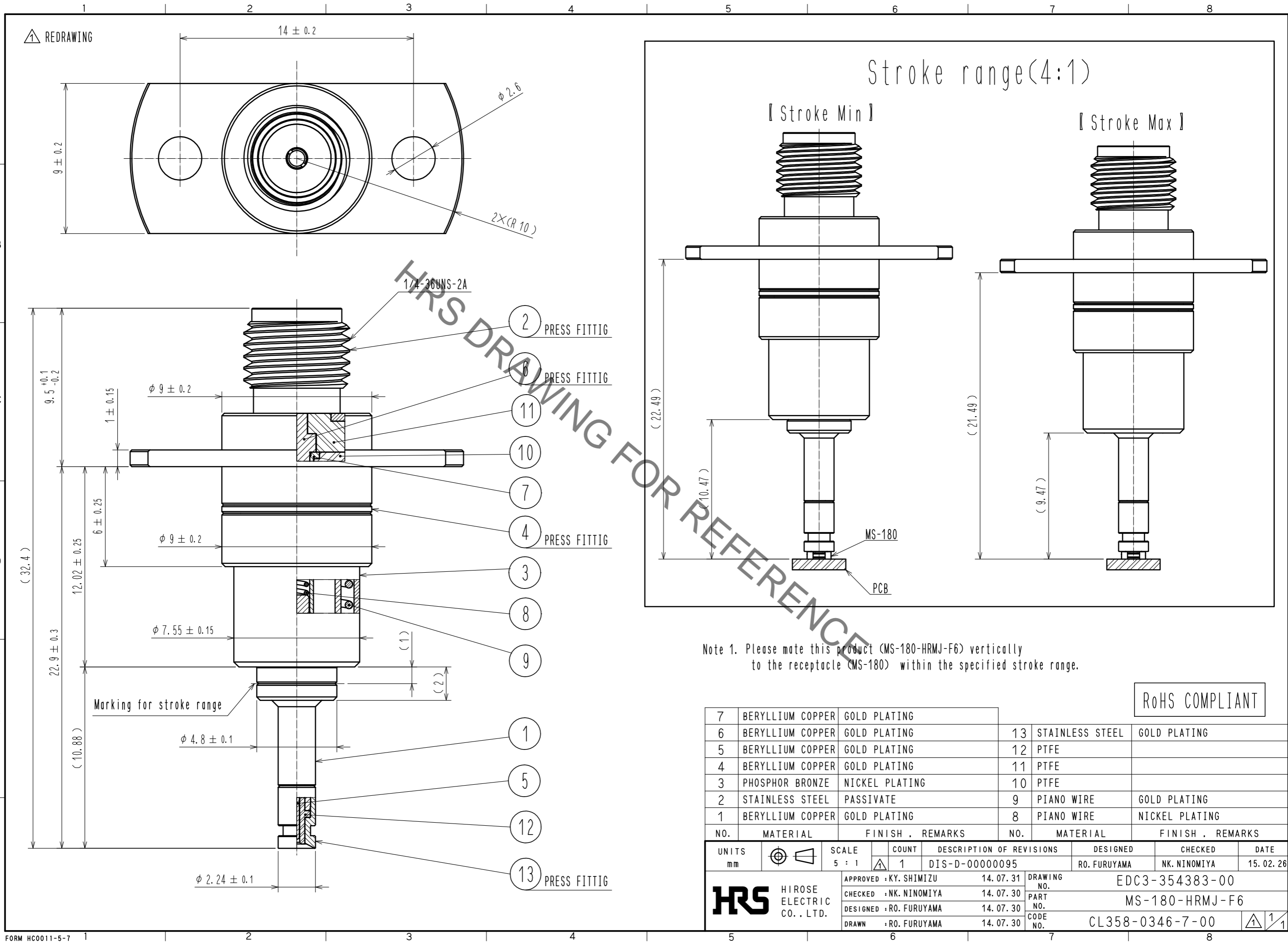


Sep.1.2021 Copyright 2021 HIROSE ELECTRIC CO., LTD. All Rights Reserved.  
In case of consideration for using Automotive equipment / device which demand high reliability, kindly contact our sales window correspondents.



Note 1. Please mate this product (MS-180-HRMJ-F6) vertically to the receptacle (MS-180) within the specified stroke range.

RoHS COMPLIANT

NO.	MATERIAL	FINISH	REMARKS	NO.	MATERIAL	FINISH	REMARKS
7	BERYLLIUM COPPER	GOLD PLATING		13	STAINLESS STEEL	GOLD PLATING	
6	BERYLLIUM COPPER	GOLD PLATING		12	PTFE		
5	BERYLLIUM COPPER	GOLD PLATING		11	PTFE		
4	BERYLLIUM COPPER	GOLD PLATING		10	PTFE		
3	PHOSPHOR BRONZE	NICKEL PLATING		9	PIANO WIRE	GOLD PLATING	
2	STAINLESS STEEL	PASSIVATE		8	PIANO WIRE	NICKEL PLATING	
1	BERYLLIUM COPPER	GOLD PLATING					

UNITS mm		SCALE 5 : 1	COUNT 1	DESCRIPTION OF REVISIONS DIS-D-0000095	DESIGNED RO. FURUYAMA	CHECKED NK. NINOMIYA	DATE 15.02.26
<b>HRS</b> HIROSE ELECTRIC CO., LTD.		APPROVED : KY. SHIMIZU	14.07.31	DRAWING NO. EDC3-354383-00			
		CHECKED : NK. NINOMIYA	14.07.30	PART NO. MS-180-HRMJ-F6			
		DESIGNED : RO. FURUYAMA	14.07.30	CODE NO. CL358-0346-7-00			
		DRAWN : RO. FURUYAMA	14.07.30				

## X-ON Electronics

Largest Supplier of Electrical and Electronic Components

*Click to view similar products for [RF Adapters - Between Series](#) category:*

*Click to view products by [Hirose](#) manufacturer:*

Other Similar products are found below :

[5945-9503-000](#) [MCX/F-SMA/M](#) [R192417010](#) [ADBJ20-E1-BJ379](#) [ADM2](#) [ADPL75-A1-PL75](#) [242191](#) [9317505](#) [AD130](#) [ADBJ20-E1-PL74](#)  
[ADBJ77-E1-UPL20](#) [ADRMF370](#) [242190](#) [242215](#) [242228](#) [R125680000W](#) [R192430000](#) [UAD95](#) [1057367-1](#) [8311505](#) [R114704000](#)  
[R451034500](#) [R451030500](#) [R451543000](#) [HDVDPN](#) [ADBJ20-K1-PL20](#) [R451570000](#) [R192419000](#) [R451034000](#) [J9](#) [J3WE-5](#) [R451032500](#)  
[242201RP](#) [17K132-K00S5](#) [03K719-S22S3](#) [AD-RSMAF-RTNC](#) [53K156-K00N5](#) [53K160-KIMN1](#) [02K119-K00E3](#) [29S132-K01N5](#) [53S156-](#)  
[K00N5](#) [02S119-S00E3](#) [28K132-K00N5](#) [02S109-K00S3](#) [27-8200TP](#) [242235](#) [ADBJ20-E1-BJ89](#) [ADP-SMAF-MMCXM](#) [000-2900](#) [321-102-](#)  
[003 \(SMA-50/2-H155/W1.03 AU\)](#)