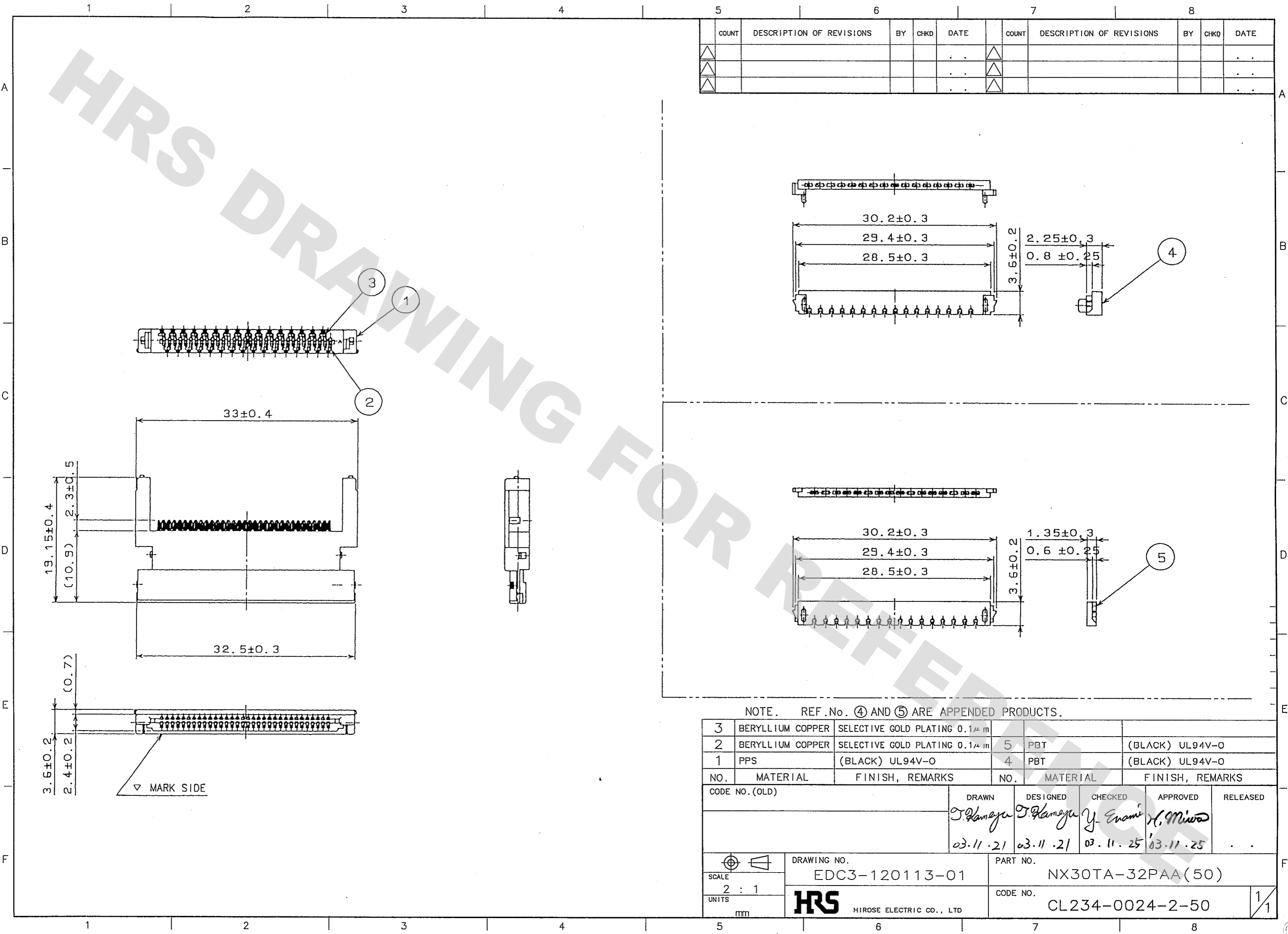


DRAWING FOR REFERENCE: This is subject to change without notice  
08/11/2012

|    |
|----|
| TO |
| Q  |
|    |
|    |



| COUNT | DESCRIPTION OF REVISIONS | BY | CHKD | DATE | COUNT | DESCRIPTION OF REVISIONS | BY | CHKD | DATE |
|-------|--------------------------|----|------|------|-------|--------------------------|----|------|------|
|       |                          |    |      |      |       |                          |    |      |      |
|       |                          |    |      |      |       |                          |    |      |      |
|       |                          |    |      |      |       |                          |    |      |      |

NOTE. REF.No. ④ AND ⑤ ARE APPENDED PRODUCTS.

| 3                            | BERYLLIUM COPPER | SELECTIVE GOLD PLATING 0.1 $\mu$ m | 5                | PBT              | (BLACK) UL94V-0 |
|------------------------------|------------------|------------------------------------|------------------|------------------|-----------------|
| 2                            | BERYLLIUM COPPER | SELECTIVE GOLD PLATING 0.1 $\mu$ m | 4                | PBT              | (BLACK) UL94V-0 |
| 1                            | PPS              | (BLACK) UL94V-0                    |                  |                  |                 |
| NO.                          | MATERIAL         | FINISH, REMARKS                    | NO.              | MATERIAL         | FINISH, REMARKS |
| CODE NO. (OLD)               |                  |                                    | DRAWN            | DESIGNED         | CHECKED         |
|                              |                  |                                    | <i>T. Kameya</i> | <i>T. Kameya</i> | <i>Y. Enami</i> |
|                              |                  |                                    | 03.11.21         | 03.11.21         | 03.11.25        |
|                              |                  |                                    | APPROVED         | RELEASED         |                 |
|                              |                  |                                    | <i>H. Miwa</i>   |                  |                 |
|                              |                  |                                    | 03.11.25         |                  |                 |
| DRAWING NO.                  |                  |                                    | PART NO.         |                  |                 |
| EDC3-120113-01               |                  |                                    | NX30TA-32PAA(50) |                  |                 |
| UNITS                        |                  |                                    | CODE NO.         |                  |                 |
| mm                           |                  |                                    | CL234-0024-2-50  |                  |                 |
| HRS HIROSE ELECTRIC CO., LTD |                  |                                    | 1/1              |                  |                 |

## X-ON Electronics

Largest Supplier of Electrical and Electronic Components

*Click to view similar products for [Memory Card Connectors](#) category:*

*Click to view products by [Hirose](#) manufacturer:*

Other Similar products are found below :

[M21-033321-005](#) [6407-249V-25273P](#) [6407-249V-25343P](#) [6426-201-21343](#) [69.920.0553.0](#) [FCN-568P068-G/07-4V](#) [809180410000000](#)  
[N7E50-7516PG-20-WF](#) [2041353-2](#) [33CFAE-DN](#) [502431-1011](#) [EN2997S61212BN](#) [EN2997SE61212BN](#) [617230001](#) [95622-003LF](#) [N7E50-](#)  
[U516RB-50-SIN0005](#) [95079-00CALF](#) [33DVIR-29S12R](#) [125A-78C00](#) [MI20A-50PD-SF-EJL\(71\)](#) [KP10S-SF-PEJ\(812\)](#) [504536-0691](#) [504580-](#)  
[0691](#) [CCM03-3109 B LFT](#) [MI21-50PD-SF\(91\)](#) [2309923-1](#) [61126-050CAHLF](#) [IC1GA-68PD-1.27DS-EJ\(72\)](#) [GTFP08432B1HR](#)  
[G85DT17001P1EU](#) [G85B21611142HHR](#) [GSD090144HR](#) [G85D1140022P1HR](#) [GMCB05801124EU](#) [G85C11101152HHR](#)  
[G85B231021B1HR](#) [G85D1160022HHR](#) [055036006202862+](#) [112K-TAA0-RA1](#) [115S-ACA2](#) [115S-ACA3](#) [115S-BS00](#) [115S-BT00](#) [115V-](#)  
[AD00](#) [MCSP-Q1-08-A-SG-T/R](#) [503960-0695](#) [101B-TAA0-R](#) [101D-TAAA-R01](#) [101D-TAAB-R01](#) [104D-TCA0-R06](#)