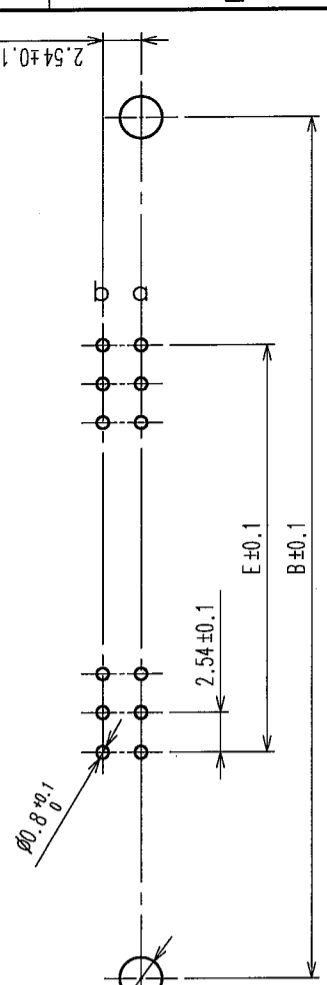
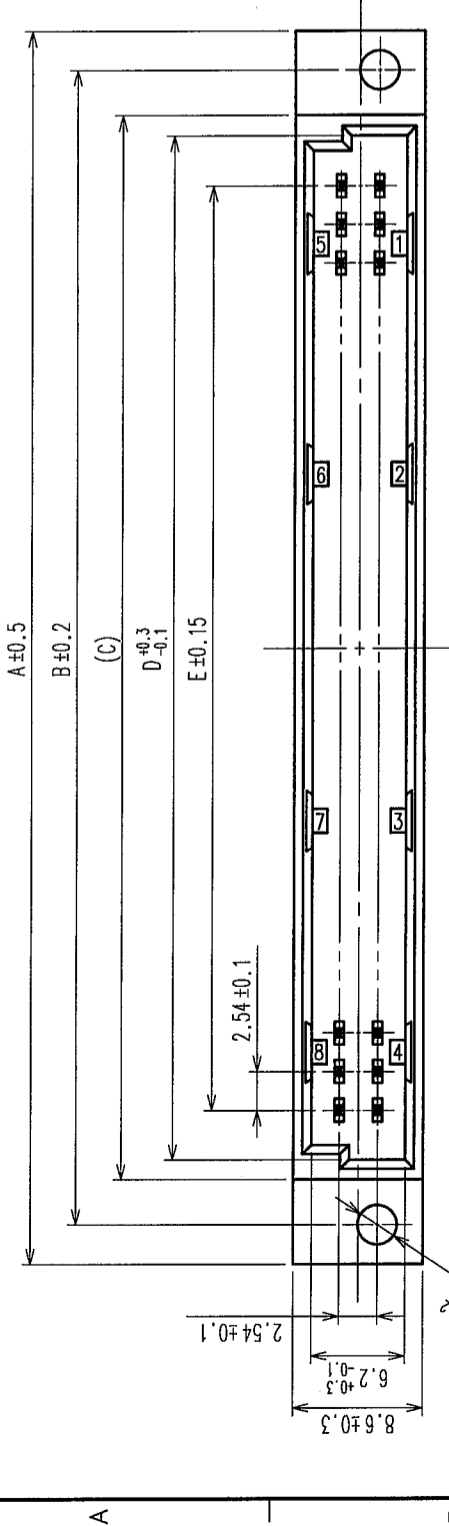


2 In case of consideration for using Automotive equipment / device which demand high reliability, kindly contact our sales window correspondents.

7

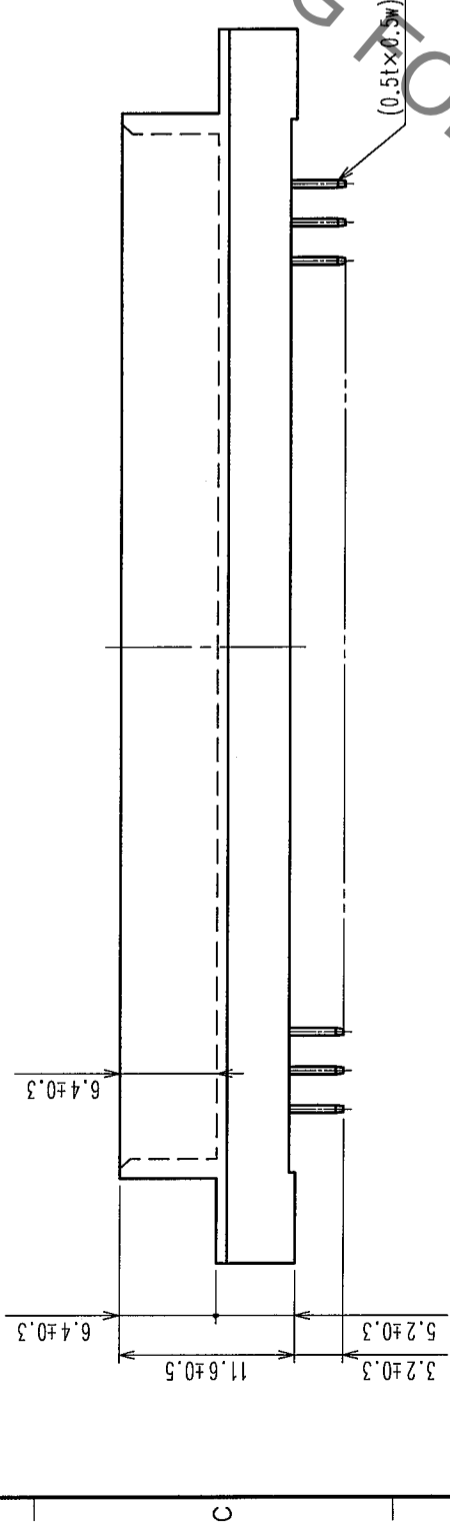
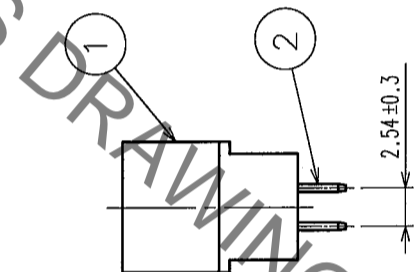
8

| COUNT | DESCRIPTION OF REVISIONS | BY | CHKD | DATE | COUNT | DESCRIPTION OF REVISIONS | BY | CHKD | DATE |
|-------|--------------------------|----|------|------|-------|--------------------------|----|------|------|
| △ | | | | | △ | | | | |
| △ | | | | | △ | | | | |
| △ | | | | | △ | | | | |



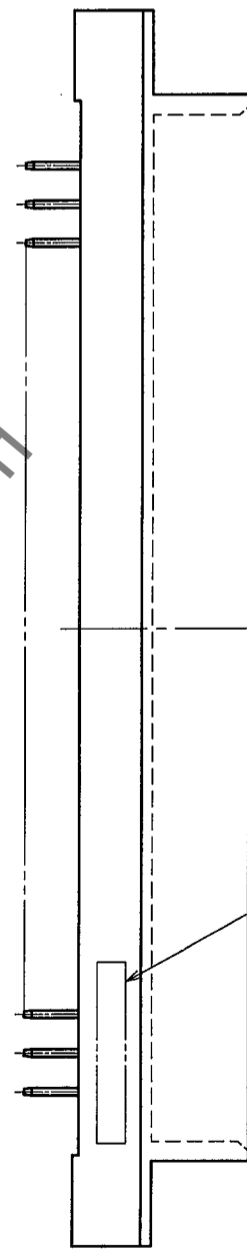
RECOMMENDED P.C.B. HOLE PATTERN(t=1.6±0.1)

HRS DRAWING FOR REFERENCE



| HRS No. | PART NO. | NUMBER OF CONTACT | A | B | C | D | E |
|---------------|------------------------|-------------------|--------|--------|--------|--------|--------|
| 583-0139-9-72 | PCN10-20P-2.54DSA(72) | 20 | 43.30 | 38.10 | 32.10 | 29.47 | 22.86 |
| 583-0007-8-72 | PCN10-32P-2.54DSA(72) | 32 | 58.54 | 53.34 | 47.34 | 44.71 | 38.10 |
| 583-0488-8-72 | PCN10-44P-2.54DSA(72) | 44 | 73.78 | 68.58 | 62.58 | 59.95 | 53.34 |
| 583-0008-0-72 | PCN10-50P-2.54DSA(72) | 50 | 81.40 | 76.20 | 70.20 | 67.57 | 60.96 |
| 583-0009-3-72 | PCN10-64P-2.54DSA(72) | 64 | 99.18 | 93.98 | 87.98 | 85.35 | 78.74 |
| 583-0010-2-72 | PCN10-90P-2.54DSA(72) | 90 | 132.20 | 127.00 | 121.00 | 118.37 | 111.76 |
| 583-0251-9-72 | PCN10-100P-2.54DSA(72) | 100 | 144.90 | 139.70 | 133.70 | 131.07 | 124.46 |

NOTE 1. AS FOR AUG, 2005.
2. THE DIMENSION IN PARENTHESIS IS FOR REFERENCE.



| | |
|----|--|
| TO | |
|----|--|

| | | |
|-----|-------|-------------------------------|
| 2,3 | BRASS | CONTACT AREA: Ni2.5μm+Au0.2μm |
| 1 | PBT | MOUNTING AREA: Ni2.5μm+Sn2μm |

| CODE NO. (OLD) | CL | FINISH, REMARKS |
|----------------|----|-----------------|
| | | GRAY, UL94V-0 |

| NO. | MATERIAL | DESIGNED | CHECKED | APPROVED | RELEASED |
|----------|----------|-----------|-----------|-----------|----------|
| 1 | PBT | H. SAITOU | S. Yamada | K. Hayama | |
| 05.08.29 | 05.08.29 | 05.08.30 | 05.08.30 | 05.08.30 | 05.08.30 |

| | | | |
|-------------|----------------|----------|-------------------|
| DRAWING NO. | EDC3-154145-01 | PART NO. | PCN10-2.54DSA(72) |
| SCALE | 2:1 | CODE NO. | CL583 |
| UNITS | mm | | |

X-ON Electronics

Largest Supplier of Electrical and Electronic Components

Click to view similar products for [DIN 41612 Connectors](#) category:

Click to view products by [Hirose](#) manufacturer:

Other Similar products are found below :

[004.767](#) [608489050008049](#) [691327-1](#) [74670-0732](#) [74680-0340](#) [75880-0015](#) [76453-0014](#) [86093159ALF](#) [9732967801](#) [QLC260R](#)
[120X10019X](#) [120X10089X](#) [122A10249X](#) [122A10669X](#) [122A11089X](#) [122A13089X](#) [122A10089X](#) [122A10129X](#) [122A10349X](#)
[122A13359X](#) [1377391-4](#) [DIN-048CPC-SR1-MH](#) [1393583-2](#) [1393726-7](#) [140X10129X](#) [143-1913-000](#) [143-1908-000](#) [1484472-1](#) [2110070-1](#)
[2110070-2](#) [CBC20T00-008FDS5-0-1-002VR](#) [172699-5036](#) [2-1393557-4](#) [2-1437084-2](#) [CTJ720E01B-6141](#) [394506](#) [419-2080-402](#)
[V42254B2202C968](#) [419-2086-201](#) [419-2087-002](#) [448657-1](#) [448847-3](#) [5-1393755-9](#) [02990000004](#) [054302](#) [043556](#) [09062483201750](#)
[09031646555](#) [09061486901840](#) [09185107324800](#)