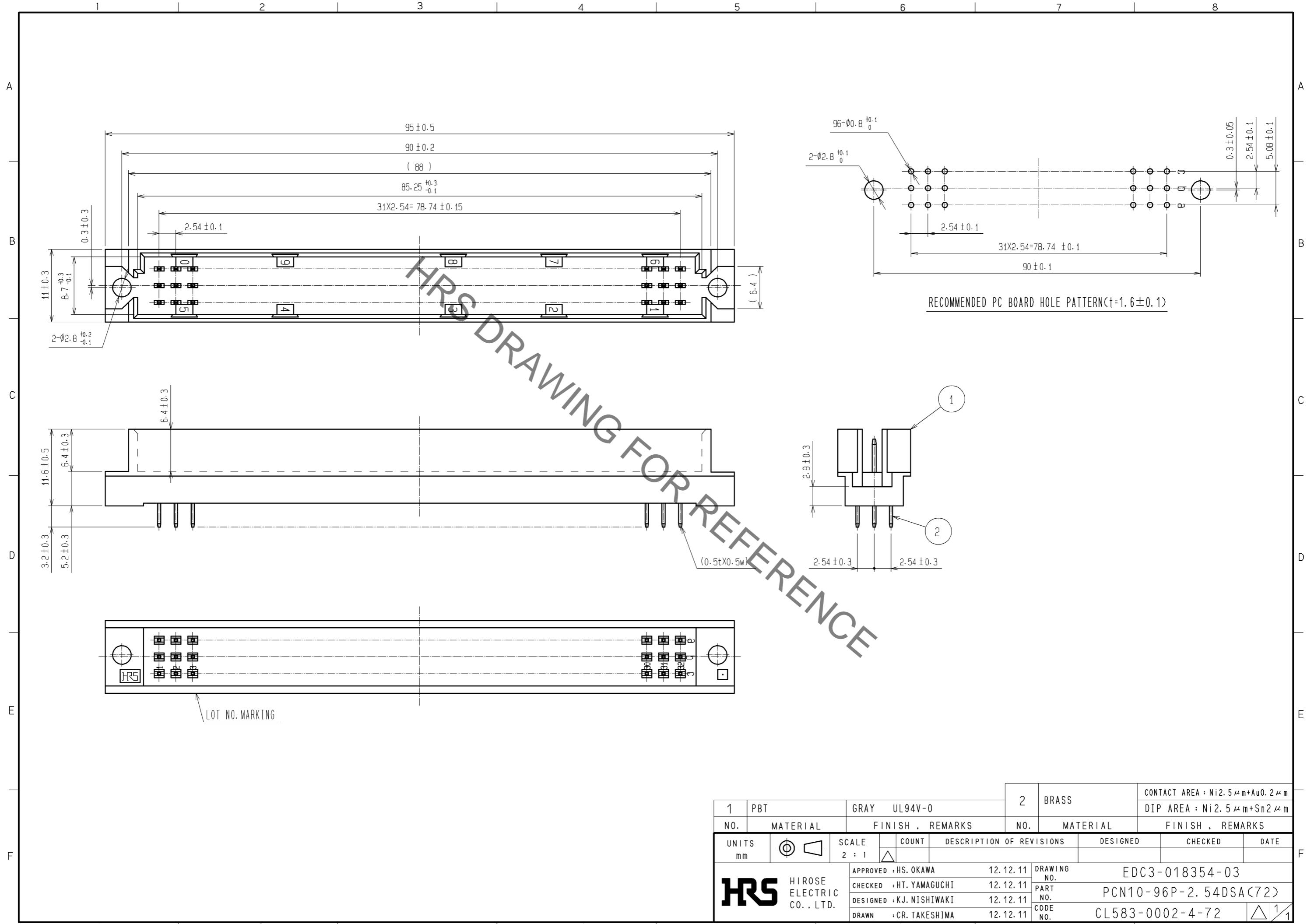


Sep.1.2021 Copyright 2021 HIROSE ELECTRIC CO., LTD. All Rights Reserved.
In case of consideration for using Automotive equipment / device which demand high reliability, kindly contact our sales window correspondents.



| | | | | | | |
|--------------------------------------|----------|--------------------------|-------------------|--------------------------------|----------|--|
| 1 | PBT | GRAY | UL94V-0 | 2 | BRASS | CONTACT AREA : Ni2.5 μ m+Au0.2 μ m DIP AREA : Ni2.5 μ m+Sn2 μ m |
| NO. | MATERIAL | FINISH . REMARKS | | NO. | MATERIAL | FINISH . REMARKS |
| UNITS mm | | SCALE 2 : 1 | COUNT Δ | DESCRIPTION OF REVISIONS | | DESIGNED |
| HRS HIROSE ELECTRIC CO., LTD. | | APPROVED : HS. OKAWA | 12.12.11 | DRAWING NO. EDC3-018354-03 | | CHECKED |
| | | CHECKED : HT. YAMAGUCHI | 12.12.11 | PART NO. PCN10-96P-2.54DSA(72) | | DATE |
| | | DESIGNED : KJ. NISHIWAKI | 12.12.11 | CODE NO. CL583-0002-4-72 | | |
| | | DRAWN : CR. TAKESHIMA | 12.12.11 | | | |

X-ON Electronics

Largest Supplier of Electrical and Electronic Components

Click to view similar products for [DIN 41612 Connectors](#) category:

Click to view products by [Hirose](#) manufacturer:

Other Similar products are found below :

[004.767](#) [608489050008049](#) [691327-1](#) [74670-0732](#) [74680-0340](#) [75880-0015](#) [76453-0014](#) [86093159ALF](#) [9732967801](#) [QLC260R](#)
[120X10019X](#) [120X10089X](#) [122A10249X](#) [122A10669X](#) [122A11089X](#) [122A13089X](#) [122A10089X](#) [122A10129X](#) [122A10349X](#)
[122A13359X](#) [1377391-4](#) [DIN-048CPC-SR1-MH](#) [1393583-2](#) [1393726-7](#) [140X10129X](#) [143-1913-000](#) [143-1908-000](#) [1484472-1](#) [2110070-1](#)
[2110070-2](#) [CBC20T00-008FDS5-0-1-002VR](#) [172699-5036](#) [2-1393557-4](#) [2-1437084-2](#) [394506](#) [419-2080-402](#) [V42254B2202C968](#) [419-2086-](#)
[201](#) [419-2087-002](#) [448657-1](#) [448847-3](#) [5-1393755-9](#) [02990000004](#) [054302](#) [043556](#) [09062483201750](#) [0850033067](#) [09031646555](#)
[09061486901840](#) [09185107324800](#)