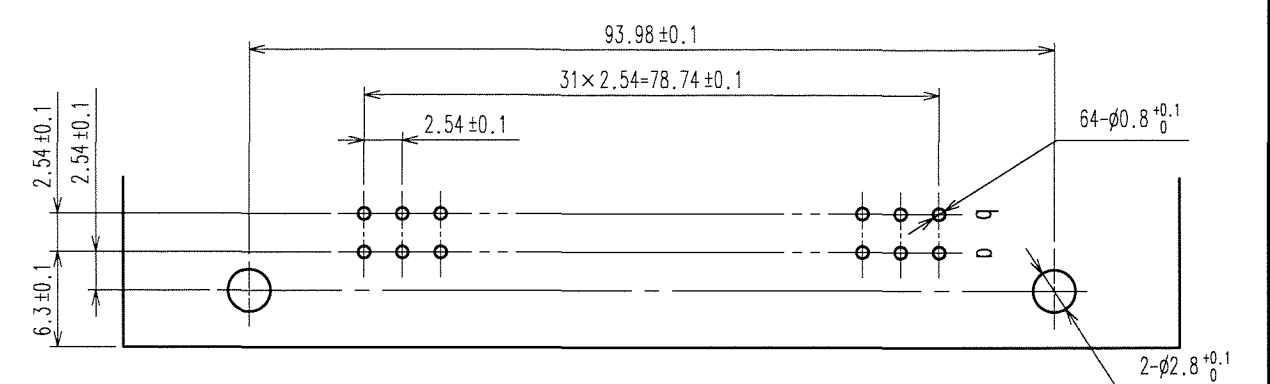
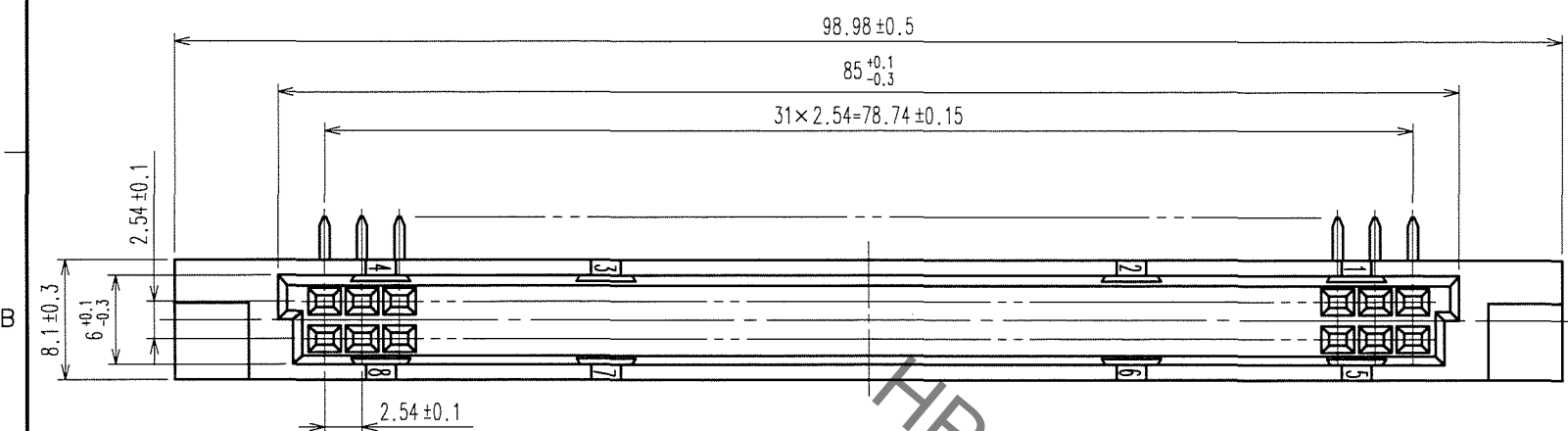
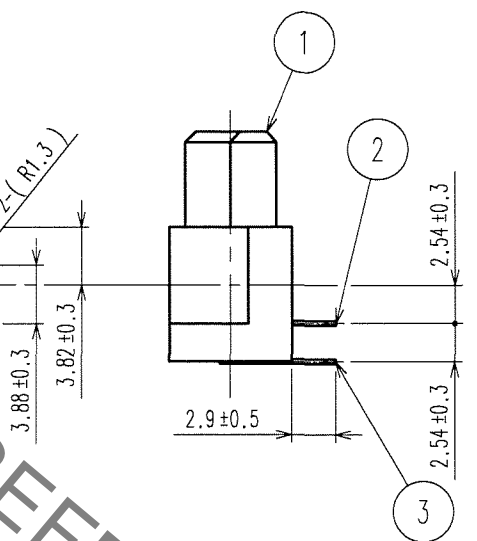
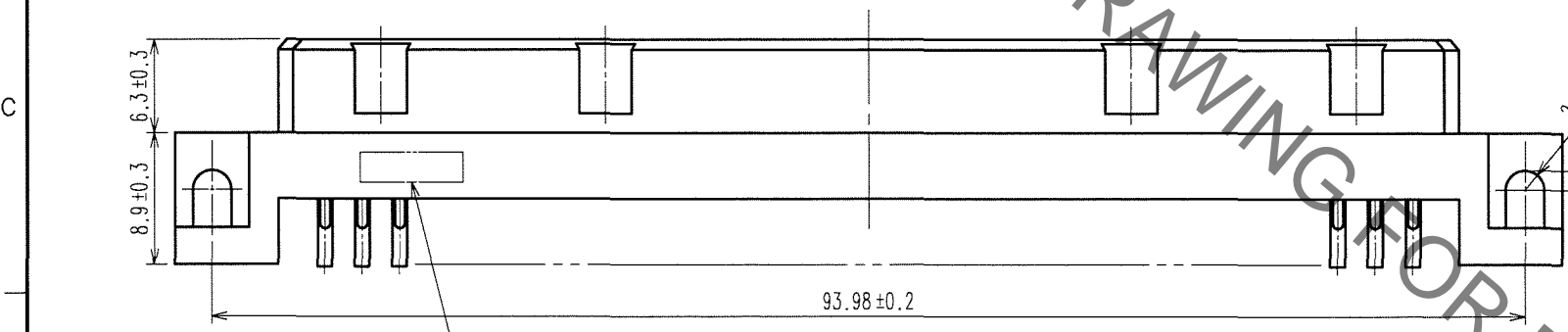


Sep.1.2021 Copyright 2021 HIROSE ELECTRIC CO., LTD. All Rights Reserved.
In case of consideration for using Automotive equipment / device which demand high reliability, kindly contact our sales window correspondents.

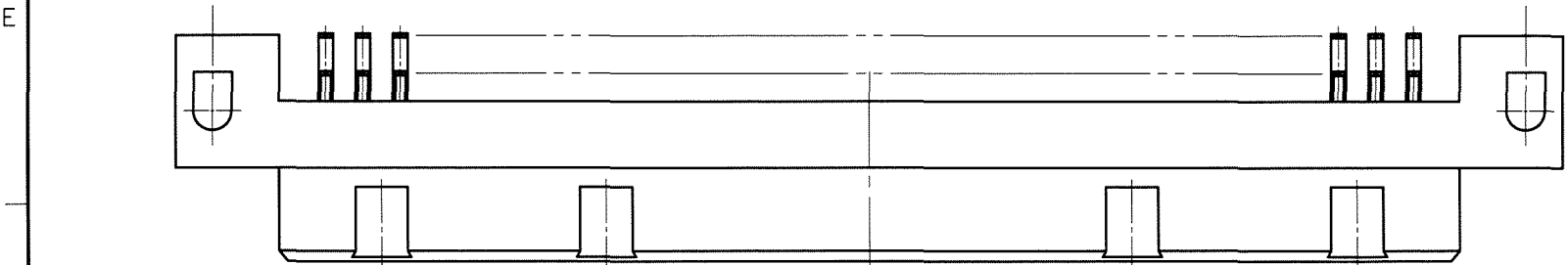
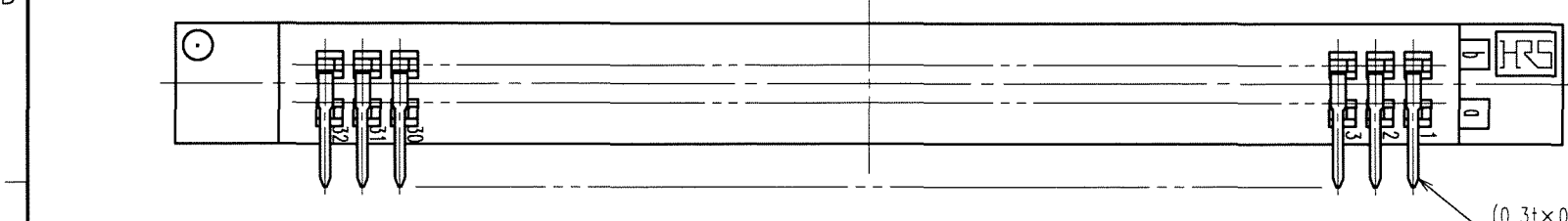
COUNT	DESCRIPTION OF REVISIONS	BY	CHKD	DATE	COUNT	DESCRIPTION OF REVISIONS	BY	CHKD	DATE



RECOMMENDED PC BOARD HOLE PATTERN (t=1.6±0.1)



LOT NO. MARKING



3	COPPER ALLOY	CONTACT AREA: Ni1μm + Au0.2μm
1,2	PBT	DIP AREA : Ni1μm + Sn1μm
NO.	MATERIAL	FINISH, REMARKS

CODE NO. (OLD) CL	DRAWN T.Saito 07.07.20	DESIGNED T.Saito 07.07.20	CHECKED <i>S. Tomioka</i> 07.07.20	APPROVED <i>K. Hayama</i> 07.07.20	RELEASED
----------------------	------------------------------	---------------------------------	--	--	--------------

SCALE 2:1	DRAWING NO. EDC3-019606-01	PART NO. PCN10C-64S-2.54DS(72)
UNITS mm	HRS HIROSE ELECTRIC CO., LTD	CODE NO. CL583-0203-6-72

X-ON Electronics

Largest Supplier of Electrical and Electronic Components

Click to view similar products for [DIN 41612 Connectors](#) category:

Click to view products by [Hirose](#) manufacturer:

Other Similar products are found below :

[004.767](#) [608489050008049](#) [691327-1](#) [74670-0732](#) [74680-0340](#) [75880-0015](#) [76453-0014](#) [86093159ALF](#) [9732967801](#) [QLC260R](#)
[120X10019X](#) [120X10089X](#) [122A10249X](#) [122A10669X](#) [122A11089X](#) [122A13089X](#) [122A10089X](#) [122A10129X](#) [122A10349X](#)
[122A13359X](#) [1377391-4](#) [DIN-048CPC-SR1-MH](#) [1393583-2](#) [1393726-7](#) [140X10129X](#) [143-1913-000](#) [143-1908-000](#) [1484472-1](#) [2110070-1](#)
[2110070-2](#) [CBC20T00-008FDS5-0-1-002VR](#) [172699-5036](#) [2-1393557-4](#) [2-1437084-2](#) [CTJ720E01B-6141](#) [394506](#) [419-2080-402](#)
[V42254B2202C968](#) [419-2086-201](#) [419-2087-002](#) [448657-1](#) [448847-3](#) [5-1393755-9](#) [02990000004](#) [054302](#) [043556](#) [09062483201750](#)
[09031646555](#) [09061486901840](#) [09185107324800](#)