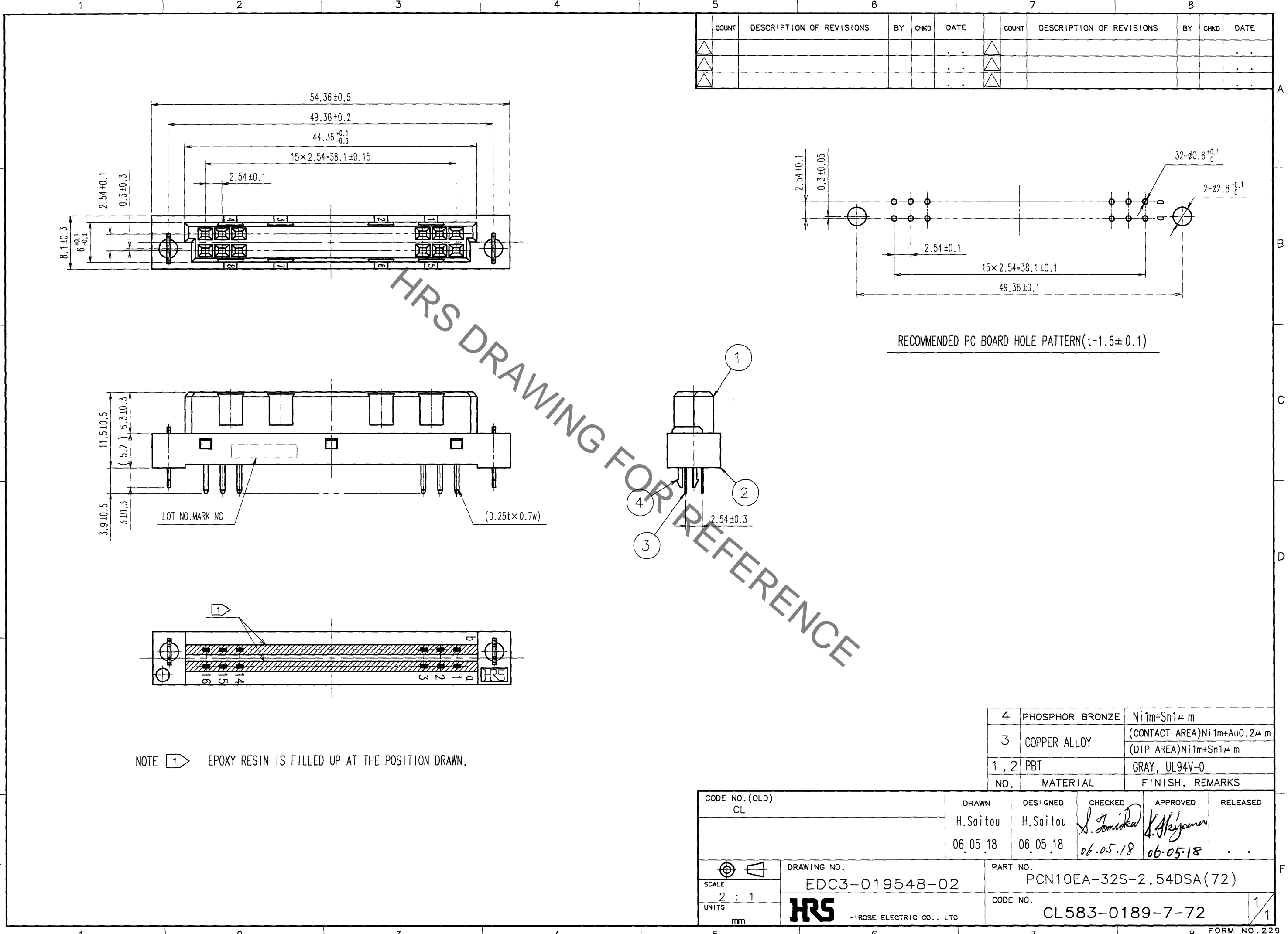


Jun.1.2019 Copyright 2019 HIROSE ELECTRIC CO., LTD. All Rights Reserved.
 In case of consideration for using Automotive equipment / device which demand high reliability, kindly contact our sales window correspondents.



COUNT	DESCRIPTION OF REVISIONS	BY	CHKD	DATE	COUNT	DESCRIPTION OF REVISIONS	BY	CHKD	DATE
△				..	△				..
△				..	△				..
△				..	△				..

RECOMMENDED PC BOARD HOLE PATTERN(t=1.6±0.1)

NOTE 1 EPOXY RESIN IS FILLED UP AT THE POSITION DRAWN.

NO.	MATERIAL	FINISH, REMARKS
4	PHOSPHOR BRONZE	Ni1m+Sn1μm
3	COPPER ALLOY	(CONTACT AREA)Ni1m+Au0.2μm (DIP AREA)Ni1m+Sn1μm
1, 2	PBT	GRAY, UL94V-0

CODE NO. (OLD) CL	DRAWN H.Saitou 06.05.18	DESIGNED H.Saitou 06.05.18	CHECKED <i>S. Tomida</i> 06.05.18	APPROVED <i>K. Hiyama</i> 06.05.18	RELEASED ..
DRAWING NO. EDC3-019548-02		PART NO. PCN10EA-32S-2.54DSA(72)			
SCALE 2 : 1		CODE NO. CL583-0189-7-72			1/1
UNITS mm		HRS HIROSE ELECTRIC CO., LTD			

TO
PCK

X-ON Electronics

Largest Supplier of Electrical and Electronic Components

Click to view similar products for [DIN 41612 Connectors](#) category:

Click to view products by [Hirose](#) manufacturer:

Other Similar products are found below :

[004.767](#) [608489050008049](#) [691327-1](#) [74670-0732](#) [74680-0340](#) [75880-0015](#) [76453-0014](#) [86093159ALF](#) [9732967801](#) [QLC260R](#)
[120X10019X](#) [120X10089X](#) [122A10249X](#) [122A10669X](#) [122A11089X](#) [122A13089X](#) [122A10089X](#) [122A10129X](#) [122A10349X](#)
[122A13359X](#) [1377391-4](#) [DIN-048CPC-SR1-MH](#) [1393583-2](#) [1393726-7](#) [140X10129X](#) [143-1913-000](#) [143-1908-000](#) [1484472-1](#) [2110070-1](#)
[2110070-2](#) [CBC20T00-008FDS5-0-1-002VR](#) [172699-5036](#) [2-1393557-4](#) [2-1437084-2](#) [CTJ720E01B-6141](#) [394506](#) [419-2080-402](#)
[V42254B2202C968](#) [419-2086-201](#) [419-2087-002](#) [448657-1](#) [448847-3](#) [5-1393755-9](#) [02990000004](#) [054302](#) [043556](#) [09062483201750](#)
[09031646555](#) [09061486901840](#) [09185107324800](#)