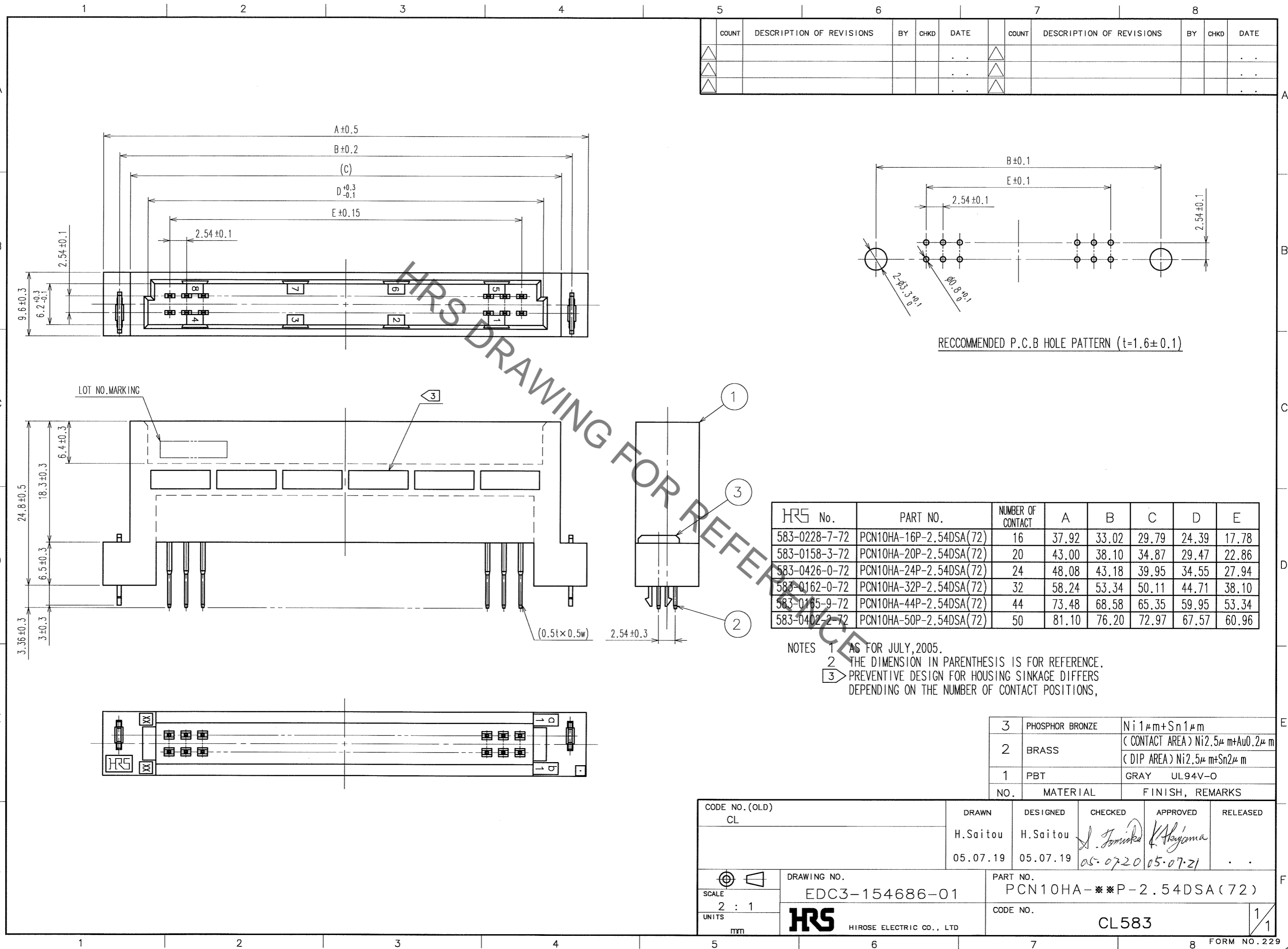


Sep.1.2021 Copyright 2021 HIROSE ELECTRIC CO., LTD. All Rights Reserved.
In case of consideration for using Automotive equipment / device which demand high reliability, kindly contact our sales window correspondents.



COUNT	DESCRIPTION OF REVISIONS	BY	CHKD	DATE	COUNT	DESCRIPTION OF REVISIONS	BY	CHKD	DATE
△				..	△				..
△				..	△				..
△				..	△				..

RECOMMENDED P.C.B HOLE PATTERN (t=1.6±0.1)

HRS No.	PART NO.	NUMBER OF CONTACT	A	B	C	D	E
583-0228-7-72	PCN10HA-16P-2.54DSA(72)	16	37.92	33.02	29.79	24.39	17.78
583-0158-3-72	PCN10HA-20P-2.54DSA(72)	20	43.00	38.10	34.87	29.47	22.86
583-0426-0-72	PCN10HA-24P-2.54DSA(72)	24	48.08	43.18	39.95	34.55	27.94
583-0162-0-72	PCN10HA-32P-2.54DSA(72)	32	58.24	53.34	50.11	44.71	38.10
583-0165-9-72	PCN10HA-44P-2.54DSA(72)	44	73.48	68.58	65.35	59.95	53.34
583-0402-2-72	PCN10HA-50P-2.54DSA(72)	50	81.10	76.20	72.97	67.57	60.96

- NOTES
- AS FOR JULY, 2005.
 - THE DIMENSION IN PARENTHESIS IS FOR REFERENCE.
 - PREVENTIVE DESIGN FOR HOUSING SINKAGE DIFFERS DEPENDING ON THE NUMBER OF CONTACT POSITIONS,

NO.	MATERIAL	FINISH, REMARKS
3	PHOSPHOR BRONZE	Ni1μm+Sn1μm (CONTACT AREA) Ni2.5μm+Au0.2μm
2	BRASS	(DIP AREA) Ni2.5μm+Sn2μm
1	PBT	GRAY UL94V-0

CODE NO. (OLD) CL	DRAWN H.Saitou 05.07.19	DESIGNED H.Saitou 05.07.19	CHECKED <i>J. Tomioka</i> 05.07.20	APPROVED <i>K. Hayama</i> 05.07.21	RELEASED ..
SCALE 2 : 1	DRAWING NO. EDC3-154686-01		PART NO. PCN10HA-***P-2.54DSA(72)		
UNITS mm	HRS HIROSE ELECTRIC CO., LTD		CODE NO. CL583		1/1

X-ON Electronics

Largest Supplier of Electrical and Electronic Components

Click to view similar products for [DIN 41612 Connectors](#) category:

Click to view products by [Hirose](#) manufacturer:

Other Similar products are found below :

[004.767](#) [608489050008049](#) [691327-1](#) [74670-0732](#) [74680-0340](#) [75880-0015](#) [76453-0014](#) [86093159ALF](#) [9732967801](#) [QLC260R](#)
[120X10019X](#) [120X10089X](#) [122A10249X](#) [122A10669X](#) [122A11089X](#) [122A13089X](#) [122A10089X](#) [122A10129X](#) [122A10349X](#)
[122A13359X](#) [1377391-4](#) [DIN-048CPC-SR1-MH](#) [1393583-2](#) [1393726-7](#) [140X10129X](#) [143-1913-000](#) [143-1908-000](#) [1484472-1](#) [2110070-1](#)
[2110070-2](#) [CBC20T00-008FDS5-0-1-002VR](#) [172699-5036](#) [2-1393557-4](#) [2-1437084-2](#) [CTJ720E01B-6141](#) [394506](#) [419-2080-402](#)
[V42254B2202C968](#) [419-2086-201](#) [419-2087-002](#) [448657-1](#) [448847-3](#) [5-1393755-9](#) [02990000004](#) [054302](#) [043556](#) [09062483201750](#)
[09031646555](#) [09061486901840](#) [09185107324800](#)