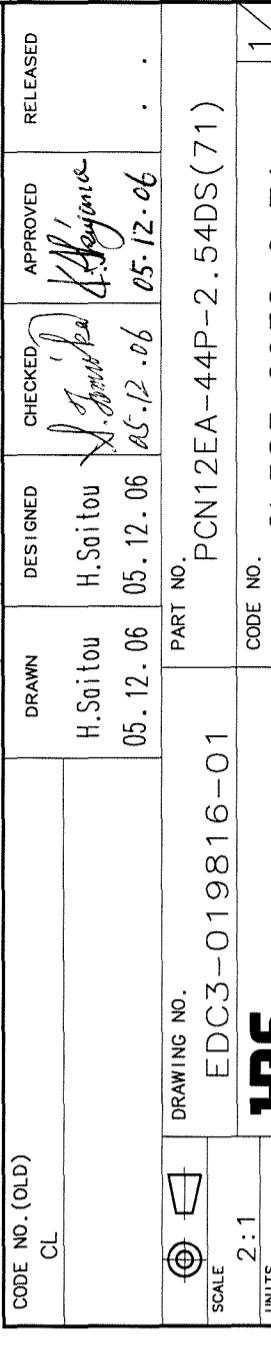
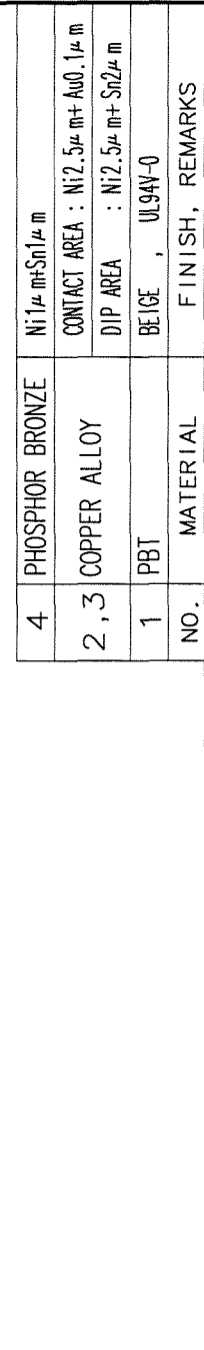
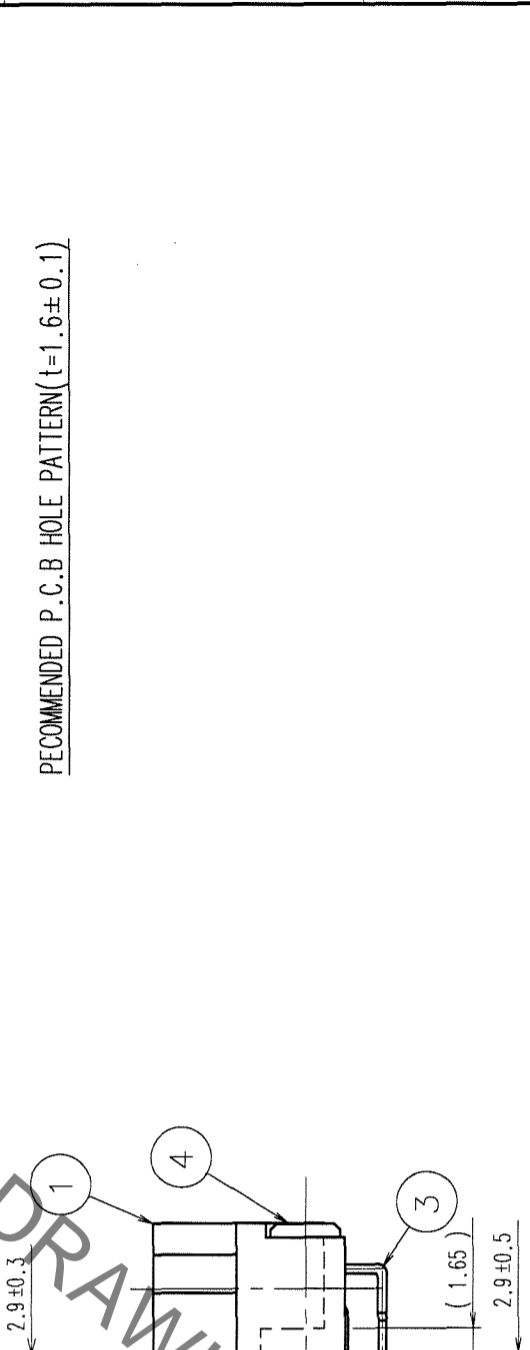
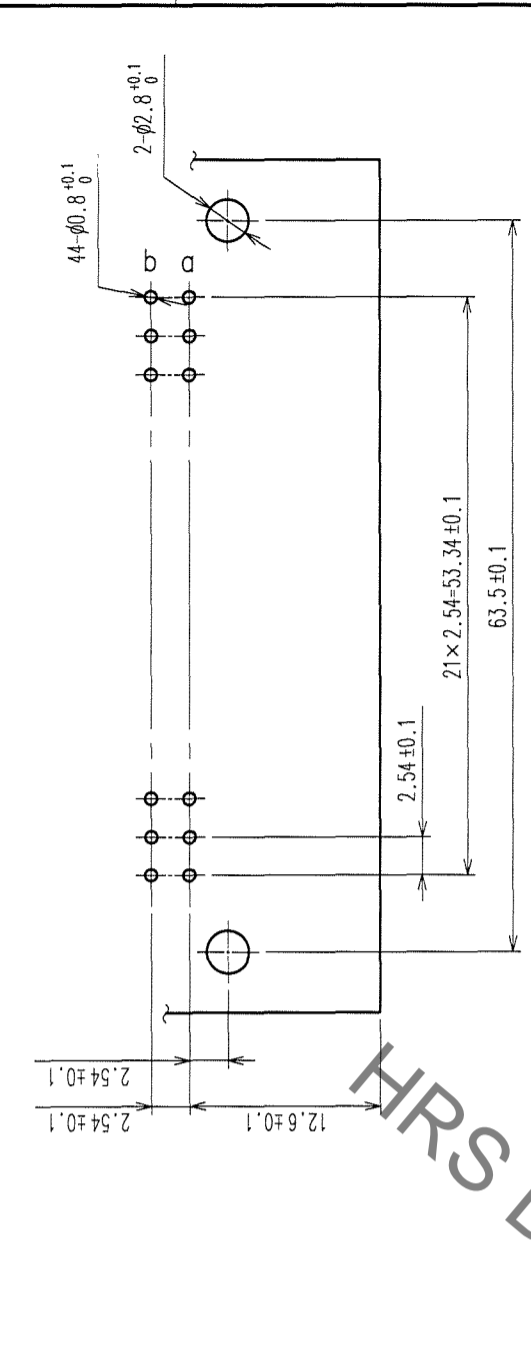


Jan.1.2022 Copyright 2022 HIROSE ELECTRIC CO., LTD. All Rights Reserved.  
 2 In case of consideration for using Automotive equipment / device which demand high reliability, kindly contact our sales window correspondents.

COUNT	DESCRIPTION OF REVISIONS	BY	CHKD	DATE	COUNT	DESCRIPTION OF REVISIONS	BY	CHKD	DATE
△					△				
△					△				
△					△				



RECOMMENDED P.C.B HOLE PATTERN(t=1.6±0.1)

HRS DRAWING FOR REFERENCE

TO	
PCK	

4	PHOSPHOR BRONZE	Ni1μm+Sn1μm
2,3	COPPER ALLOY	CONTACT AREA : Ni2.5μm+Au0.1μm DIP AREA : Ni2.5μm+Sn2μm
1	PBT	BEIGE, UL94V-0
NO.	MATERIAL	FINISH, REMARKS

CODE NO. (OLD)	CL	DESIGNED	H.Saitou	CHECKED	<i>S. Saitou</i>	APPROVED	<i>K. Hayama</i>	RELEASED	
DRAWING NO.	EDC3-019816-01	DRAWN	H.Saitou	DESIGNED	H.Saitou	CHECKED	<i>S. Saitou</i>	APPROVED	<i>K. Hayama</i>
SCALE	2:1								
UNITS	mm								
PART NO.	PCN12EA-44P-2.54DS(71)								
CODE NO.	CL583-2032-6-71								

## X-ON Electronics

Largest Supplier of Electrical and Electronic Components

*Click to view similar products for [DIN 41612 Connectors](#) category:*

*Click to view products by [Hirose](#) manufacturer:*

Other Similar products are found below :

[013-211](#) [02011601101](#) [02011601102](#) [02011601105](#) [02011601106](#) [02011602101](#) [02011602102](#) [02011608101](#) [02021601013](#) [02021601201](#)  
[02021601202](#) [02021601301](#) [02021601601](#) [02021602002](#) [02021602201](#) [02021602301](#) [02021602302](#) [02021602601](#) [02021608201](#)  
[02031602201](#) [02041601101](#) [02050000003](#) [02050000004](#) [02050001511](#) [02050001513](#) [02050002512](#) [02050002513](#) [024070](#) [02440000002](#)  
[02440000004](#) [02440000005](#) [02440000006](#) [02440000007](#) [02440000008](#) [02440000009](#) [02440000011](#) [02990000003](#) [02990000004](#) [031-9](#) [033-](#)  
[579](#) [043554](#) [054302](#) [054303](#) [064710](#) [068-710](#) [0736441000](#) [0740409870](#) [0746969002](#) [0757051634](#) [0757105208](#)