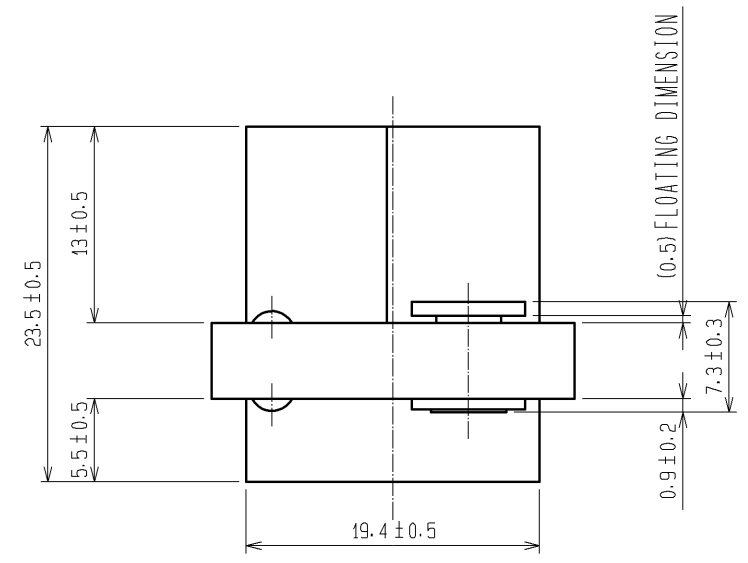
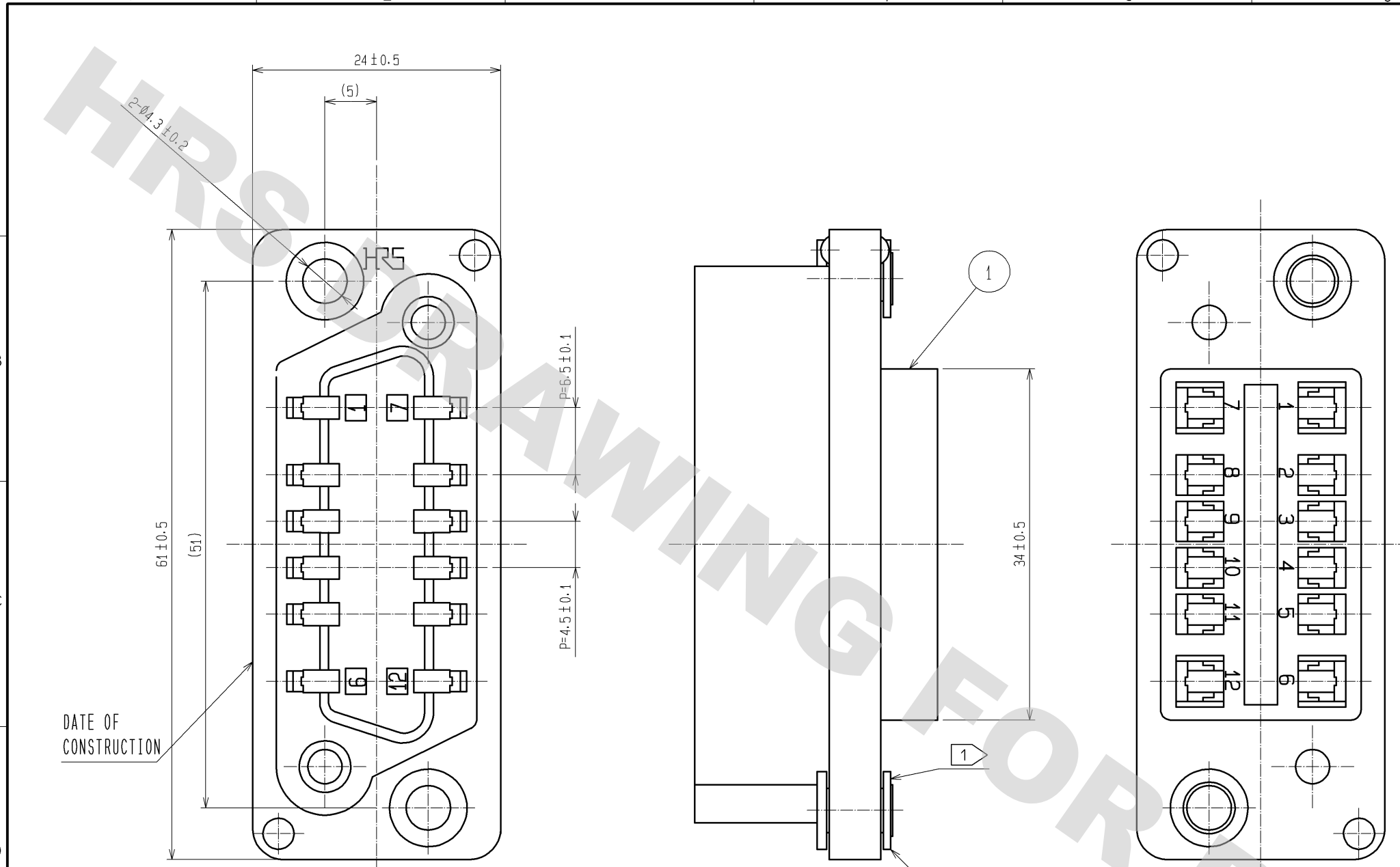


DRAWING FOR REFERENCE: This is subject to change without notice  
08/11/2012

- NOTE 1 THE FLOATING BUSH CAN BE MOVED 0.4mm MAX. IN ALL DIRECTIONS
- 2 OPERATING TEMPERATURE RANGE, RATED VOLTAGE, AND RATED CURRENT ARE AS PER TABLE-1.
- 3 DIRECTIONS FOR USE
- (1) APPLICABLE CONTACTS ARE AS FOLLOWS.  
QR/P-XC-111, QR/P-XC-121,  
QR/P-XC-211, QR/P-XC-221.
- (2) PLEASE DO NOT USE FOR THE PURPOSE OF INTERRUPTING THE CURRENT.
- (3) PLEASE USE THIS CONNECTOR IN ENCLOSURE.
- (4) TO APPLY WITH THIS CONNECTOR, PLEASE USE THE STRANDED WIRE CABLE WITH RATED TEMPERATURE 80°C. (APPLICABLE TO ONLY UL STANDARD.)
- (5) IT DEPENDS ON APPLICABLE EQUIPMENT WHETHER TO USE OR NOT STRAIN RELIEF FOR CABLE. (APPLICABLE TO ONLY UL STANDARD.)

2 TABLE-1

SAFETY STANDARD		UL	CSA	TÜV
OPERATING TEMPERATURE RANGE		-10 ~ +60°		
RATED VOLTAGE	CONTACT No. 1, 6, 7, 12	AC 120V	AC 250V	AC 600V
	OTHER CONTACTS			AC250V DC300V AC125V DC150V
RATED CURRENT	AWG#14	10A	10A	—
	AWG#16		8A	1A
	AWG#18	3A	3A	—
	AWG#20		2A	—
	AWG#22		—	—
AWG#24	1A	—	1A	



1	PBT	COLOR: BLUE UL94V-0	3	BRASS	NICKEL PLATING 3μm min		
2	BRASS	NICKEL PLATING 3μm min					
NO.	MATERIAL	FINISH, REMARKS	NO.	MATERIAL	FINISH, REMARKS		
UNITS mm	⊕	SCALE 2:1	COUNT	DESCRIPTION OF REVISIONS	DESIGNED	CHECKED	DATE
APPROVED: YH. ENAMI		09.02.16	DRAWING NO. EDC3-008214-01				
CHECKED: HO. MIWA		09.02.16	PART NO. QR/P-12S-C(51)				
DESIGNED: YH. MAMADA		09.02.16	CODE NO. CL221-0006-4-51				
DRAWN: YH. MAMADA		09.02.16					

## X-ON Electronics

Largest Supplier of Electrical and Electronic Components

*Click to view similar products for [Rack & Panel Connectors](#) category:*

*Click to view products by [Hirose](#) manufacturer:*

Other Similar products are found below :

[00171410002](#) [00171420202](#) [00171440002](#) [02-014-013-5200-000](#) [613467-000](#) [CTJ112E01E-513](#) [CTJ116E03A-513](#) [CTJ720E01B-513 L/C](#)  
[66020-2](#) [CW8958-000](#) [699886-000](#) [D250-50632](#) [70.400.3240.0](#) [70.955.2453.3](#) [733753-000](#) [F22831-000](#) [780-522-DPX34RG8-02](#) [8660-501](#)  
[87.060.0053.0](#) [900709N001](#) [928358-1](#) [D-659-0061](#) [DMC-MD 24 C-T](#) [1-445717-6](#) [1484469-2](#) [1604997-2](#) [MTC100-BF1-P31CS015](#)  
[MTC100-KT2-0083](#) [MTC100-KT2-0123-003](#) [MTC100-YA1-005](#) [MTCPQKT1R2PGCA](#) [MTCR-103-04S](#) [MTCX1X-100-100CS025](#)  
[1738331-1](#) [1757667-1](#) [1811481-1](#) [1883433-1](#) [201046-7](#) [202648-4](#) [213364-1](#) [226503-000](#) [937028-164](#) [1663130-2](#) [172305-4](#) [F36711-000](#)  
[202355-2](#) [202356-2](#) [G16S-A](#) [G20S-AB](#) [CHA-0017-003](#)