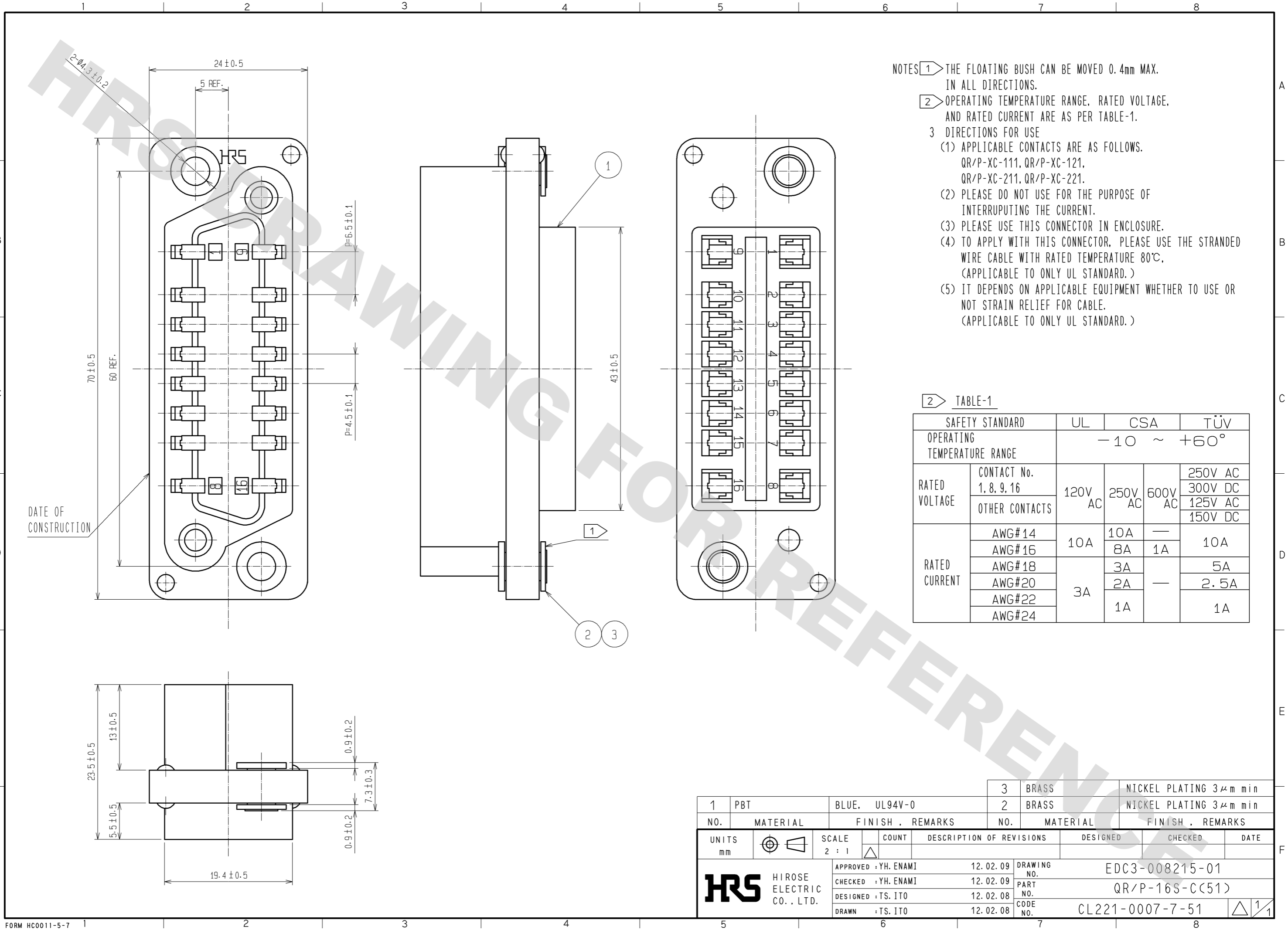


DRAWING FOR REFERENCE: This is subject to change without notice
08/11/2012



- NOTES
- 1 THE FLOATING BUSH CAN BE MOVED 0.4mm MAX. IN ALL DIRECTIONS.
 - 2 OPERATING TEMPERATURE RANGE, RATED VOLTAGE, AND RATED CURRENT ARE AS PER TABLE-1.
 - 3 DIRECTIONS FOR USE
 - (1) APPLICABLE CONTACTS ARE AS FOLLOWS.
QR/P-XC-111, QR/P-XC-121,
QR/P-XC-211, QR/P-XC-221.
 - (2) PLEASE DO NOT USE FOR THE PURPOSE OF INTERRUPTING THE CURRENT.
 - (3) PLEASE USE THIS CONNECTOR IN ENCLOSURE.
 - (4) TO APPLY WITH THIS CONNECTOR, PLEASE USE THE STRANDED WIRE CABLE WITH RATED TEMPERATURE 80°C. (APPLICABLE TO ONLY UL STANDARD.)
 - (5) IT DEPENDS ON APPLICABLE EQUIPMENT WHETHER TO USE OR NOT STRAIN RELIEF FOR CABLE. (APPLICABLE TO ONLY UL STANDARD.)

2 TABLE-1

SAFETY STANDARD		UL	CSA	TÜV
OPERATING TEMPERATURE RANGE		-10 ~ +60°		
RATED VOLTAGE	CONTACT No. 1, 8, 9, 16	120V AC	250V AC	600V AC
	OTHER CONTACTS			250V AC
RATED CURRENT	AWG# 14	10A	10A	1A
	AWG# 16		8A	1A
	AWG# 18	3A	3A	—
	AWG# 20		2A	—
	AWG# 22		1A	—
AWG# 24	—	—	1A	

1	PBT	BLUE, UL94V-0	3	BRASS	NICKEL PLATING 3μm min			
2	BRASS	NICKEL PLATING 3μm min	2	BRASS	NICKEL PLATING 3μm min			
NO.	MATERIAL	FINISH, REMARKS	NO.	MATERIAL	FINISH, REMARKS			
UNITS	mm	SCALE	2 : 1	COUNT	DESCRIPTION OF REVISIONS	DESIGNED	CHECKED	DATE
HRS HIROSE ELECTRIC CO., LTD.		APPROVED : YH. ENAMI	12.02.09	DRAWING NO.	EDC3-008215-01			
		CHECKED : YH. ENAMI	12.02.09	PART NO.	QR/P-16S-C(51)			
		DESIGNED : TS. ITO	12.02.08	CODE NO.	CL221-0007-7-51			
		DRAWN : TS. ITO	12.02.08					

X-ON Electronics

Largest Supplier of Electrical and Electronic Components

Click to view similar products for [Rack & Panel Connectors](#) category:

Click to view products by [Hirose](#) manufacturer:

Other Similar products are found below :

[00171410002](#) [00171420202](#) [00171440002](#) [02-014-013-5200-000](#) [613467-000](#) [CTJ112E01E-513](#) [CTJ116E03A-513](#) [66020-2](#) [CW8958-000](#)
[699886-000](#) [D250-50632](#) [70.400.3240.0](#) [70.955.2453.3](#) [733753-000](#) [F22831-000](#) [780-522-DPX34RG8-02](#) [8660-501](#) [87.060.0053.0](#)
[900709N001](#) [928358-1](#) [D-659-0061](#) [DMC-MD 24 C-T](#) [1-445717-6](#) [1484469-2](#) [1604997-2](#) [MTC100-BF1-P31CS015](#) [MTC100-KT2-0083](#)
[MTC100-KT2-0123-003](#) [MTC100-YA1-005](#) [MTCQKT1R2PGCA](#) [MTCR-103-04S](#) [MTCX1X-100-100CS025](#) [1738331-1](#) [1757667-1](#)
[1811481-1](#) [1883433-1](#) [201046-7](#) [202648-4](#) [213364-1](#) [226503-000](#) [937028-164](#) [1663130-2](#) [172305-4](#) [F36711-000](#) [202355-2](#) [202356-2](#)
[G16S-A](#) [G20S-AB](#) [CHA-0017-003](#) [CHA-0296](#)