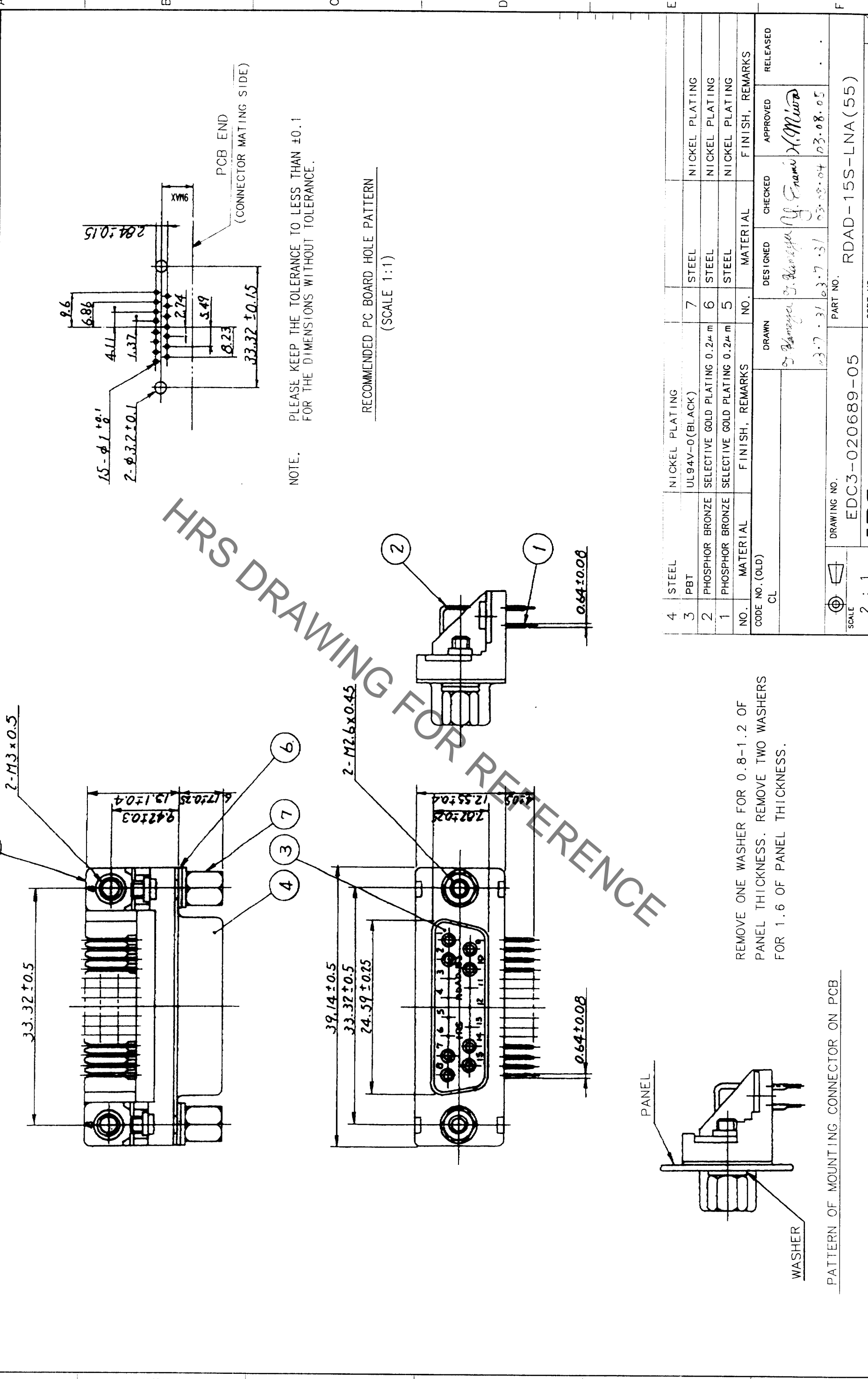
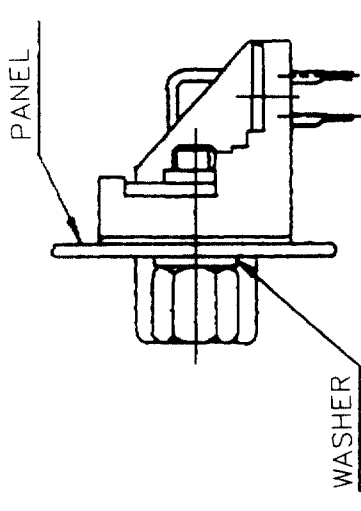


| NO. | DESCRIPTION OF REVISIONS | BY | CHKD | DATE | COUNT |
|-----|--------------------------|----|------|------|-------|
| 1 | | | | | |
| 2 | | | | | |
| 3 | | | | | |
| 4 | | | | | |
| 5 | | | | | |

| NO. | DESCRIPTION OF REVISIONS | BY | CHKD | DATE | COUNT |
|-----|--------------------------|----|------|------|-------|
| 1 | | | | | |
| 2 | | | | | |
| 3 | | | | | |
| 4 | | | | | |
| 5 | | | | | |



HRS DRAWING FOR REFERENCE



PATTERN OF MOUNTING CONNECTOR ON PCB

| NO. | MATERIAL | FINISH, REMARKS | NO. | MATERIAL | FINISH, REMARKS |
|-----|-----------------|------------------------------|-----|----------|-----------------|
| 4 | STEEL | NICKEL PLATING | 7 | STEEL | NICKEL PLATING |
| 3 | PBT | UL94V-0(BLACK) | 6 | STEEL | NICKEL PLATING |
| 2 | PHOSPHOR BRONZE | SELECTIVE GOLD PLATING 0.2μm | 5 | STEEL | NICKEL PLATING |
| 1 | PHOSPHOR BRONZE | SELECTIVE GOLD PLATING 0.2μm | | | |

| | | | | | | | |
|----------|--------------|---------|--------------|----------|-----------|----------|--|
| DESIGNED | Y. Yamaguchi | CHECKED | H. Yamaguchi | APPROVED | H. Minato | RELEASED | |
| DRAWN | Y. Yamaguchi | | | | | | |
| DATE | 03.07.31 | DATE | 03.08.04 | DATE | 03.08.05 | | |

| | | | |
|-------------|----------------|----------|------------------|
| DRAWING NO. | EDC3-020689-05 | PART NO. | RDAD-15S-LNA(55) |
| SCALE | 2 : 1 | CODE NO. | CL211-0317-7-55 |
| UNITS | MM | | |

REMOVE ONE WASHER FOR 0.8-1.2 OF PANEL THICKNESS. REMOVE TWO WASHERS FOR 1.6 OF PANEL THICKNESS.

X-ON Electronics

Largest Supplier of Electrical and Electronic Components

Click to view similar products for [D-Sub Standard Connectors](#) category:

Click to view products by [Hirose](#) manufacturer:

Other Similar products are found below :

[56F706-005-LI](#) [56F711-015](#) [LV242999-142T12](#) [015-0341-000](#) [015-0372-005](#) [015-0372-008](#) [015-8755-001](#) [020419-0104](#) [012-0467-000](#)
[012-9507-034](#) [012-9507-114](#) [020745-0008](#) [609-25P](#) [CT2-18-11PCAU](#) [CT6-10SL-3SC](#) [CT6-10SL-4SC](#) [CT6-14S-2SC](#) [CT6E14SA7SC](#)
[CT6N10SL-4SSA34](#) [M83513/01-FC](#) [M83723/76W24619 L/C](#) [M85049/48-3-2F](#) [6STD09PCM99B70X](#) [6STD09SCM99B30X](#)
[6STD09SCT99S40X](#) [6STD15PCT99S40X](#) [6STD15SCT99S40X](#) [6STF09PCM05B70X](#) [7-135760-9](#) [MC11E-10-6SN](#) [747552-3](#) [MD1-21PS](#)
[MDM-15SCBRM7-F222](#) [MDM96517-699](#) [MDM96521-744](#) [MDVB1-21SL1](#) [MIK0-1-7SH003](#) [MIKQ6-7SH076](#) [MIKQ7-7PH077](#) [MIKQ7-](#)
[7PH11](#) [MIKQ7-7PH32](#) [MJSV-28SL61](#) [MKJ4A1F14-55S](#) [8-135760-3](#) [8STD09PCM99B30X](#) [PG-KV/PV-16-GROM-SEALING](#) [GDA15P](#)
[GDAY15PB](#) [980-0000-170](#) [980-0000-171](#)