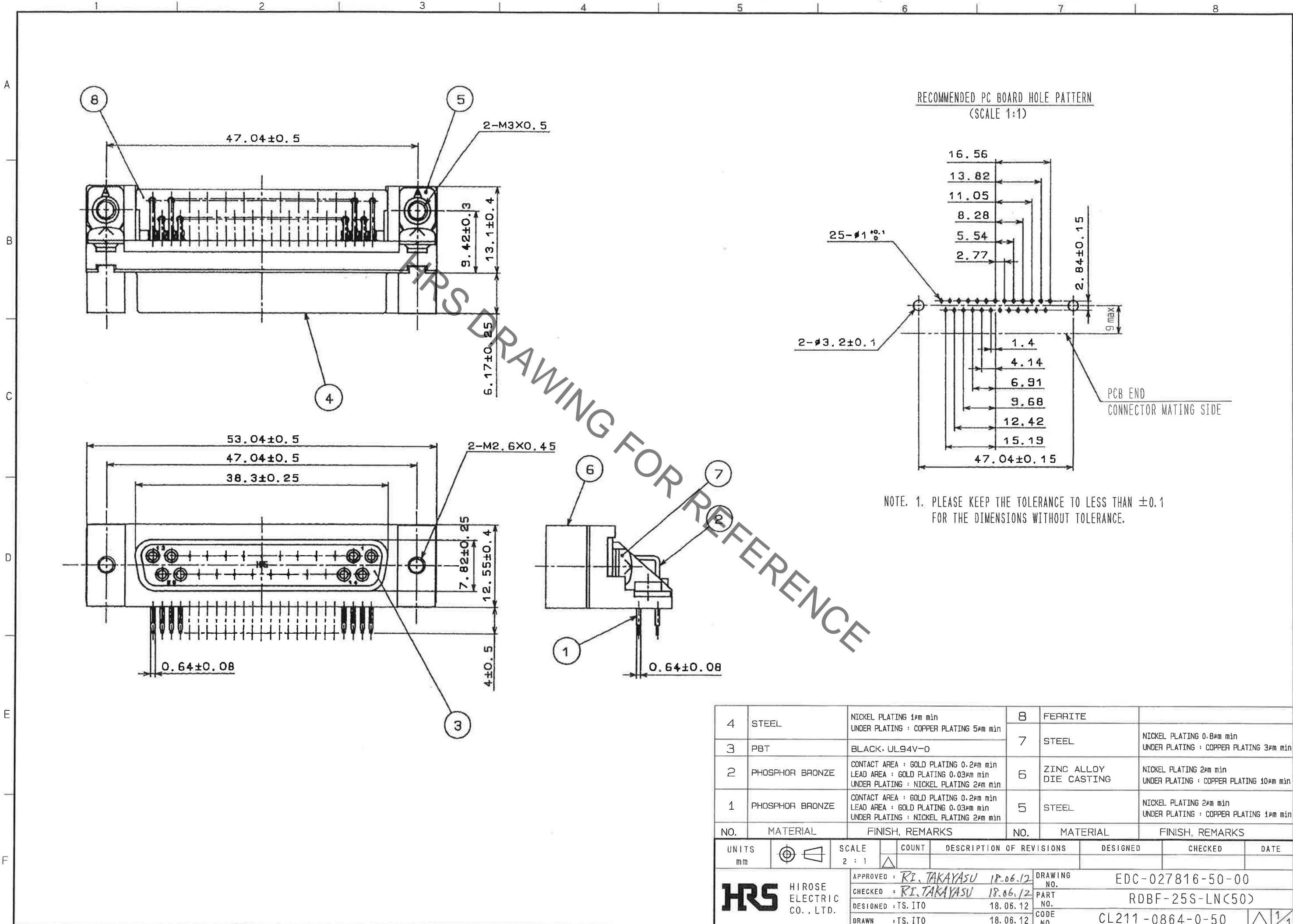


Sep.1.2021 Copyright 2021 HIROSE ELECTRIC CO., LTD. All Rights Reserved.  
In case of consideration for using Automotive equipment / device which demand high reliability, kindly contact our sales window correspondents.



RECOMMENDED PC BOARD HOLE PATTERN  
(SCALE 1:1)

NOTE. 1. PLEASE KEEP THE TOLERANCE TO LESS THAN  $\pm 0.1$   
FOR THE DIMENSIONS WITHOUT TOLERANCE.

4	STEEL	NICKEL PLATING 1 $\mu$ m min UNDER PLATING : COPPER PLATING 5 $\mu$ m min	8	FERRITE	
3	PBT	BLACK, UL94V-0	7	STEEL	NICKEL PLATING 0.8 $\mu$ m min UNDER PLATING : COPPER PLATING 3 $\mu$ m min
2	PHOSPHOR BRONZE	CONTACT AREA : GOLD PLATING 0.2 $\mu$ m min LEAD AREA : GOLD PLATING 0.03 $\mu$ m min UNDER PLATING : NICKEL PLATING 2 $\mu$ m min	6	ZINC ALLOY DIE CASTING	NICKEL PLATING 2 $\mu$ m min UNDER PLATING : COPPER PLATING 10 $\mu$ m min
1	PHOSPHOR BRONZE	CONTACT AREA : GOLD PLATING 0.2 $\mu$ m min LEAD AREA : GOLD PLATING 0.03 $\mu$ m min UNDER PLATING : NICKEL PLATING 2 $\mu$ m min	5	STEEL	NICKEL PLATING 2 $\mu$ m min UNDER PLATING : COPPER PLATING 1 $\mu$ m min
NO.	MATERIAL	FINISH, REMARKS	NO.	MATERIAL	FINISH, REMARKS
UNITS mm		SCALE 2 : 1	COUNT	DESCRIPTION OF REVISIONS	
APPROVED : RI, TAKAYASU 18.06.12		DESIGNED : TS, ITO 18.06.12		DRAWING NO. EDC-027816-50-00	
CHECKED : RI, TAKAYASU 18.06.12		DRAWN : TS, ITO 18.06.12		PART NO. RDBF-25S-LN(50)	
HRS HIROSE ELECTRIC CO., LTD.				CODE NO. CL211-0864-0-50	

## X-ON Electronics

Largest Supplier of Electrical and Electronic Components

*Click to view similar products for [D-Sub Standard Connectors](#) category:*

*Click to view products by [Hirose](#) manufacturer:*

Other Similar products are found below :

[56F711-015](#) [LV242999-142T12](#) [015-0341-000](#) [015-0372-005](#) [015-0372-008](#) [015-8755-001](#) [020419-0104](#) [012-0467-000](#) [012-9507-034](#) [012-9507-114](#) [020745-0008](#) [609-25P](#) [CT2-14S-2PCA34](#) [CT2-18-11PCAU](#) [CT6-10SL-3SC](#) [CT6-10SL-4SC](#) [CT6-14S-2SC](#) [CT6E14SA7SC](#)  
[M83513/01-FC](#) [M83723/76W24619 L/C](#) [M85049/48-3-2F](#) [6STD09PCM99B70X](#) [6STD09SCM99B30X](#) [6STD09SCT99S40X](#)  
[6STD15PCT99S40X](#) [6STD15SCM99B30X](#) [6STD15SCT99S40X](#) [6STF09PCM05B70X](#) [7-135760-9](#) [MC11E-10-6SN](#) [747552-3](#) [MD1-21PS](#)  
[MDM-15SCBRM7-F222](#) [MDM96517-699](#) [MDM96521-744](#) [MDVB1-21SL1](#) [MIK0-1-7SH003](#) [MIKQ6-7SH076](#) [MIKQ7-7PH077](#) [MIKQ7-7PH11](#) [MIKQ7-7PH32](#) [MJSV-28SL61](#) [MKJ4A1F14-55S](#) [8-135760-3](#) [8STD09PCM99B30X](#) [PG-KV/PV-16-GROM-SEALING](#) [GDA15P](#)  
[GDAY15PB](#) [980-0000-170](#) [980-0000-171](#)